

Fig. S1. Apical spine numbering, terminology and position on Rhabdiphoridae, after Fitness *et al.* (2015). Dorsal view, showing cross-sectional relationship of each potential spine on femora and tibiae. Positions are indicated as prolateral (anterior facing), retrolateral (posterior facing), inferior (ventral facing) and superior (dorsal facing).

English translation of the original descriptions from the French language in:

Pictet A. & de Saussure H. 1893. De quelques orthoptères nouveaux. *Mitteilungen der Schweizerischen Entomologischen Gesellschaft* 8: 301-303.

Pharmacus gen. nov.

Shape slender; head perpendicular, vertex sloping and fastigium short, grooved, two-pointed and facing forward, its continuation between the antennae very narrow, in the shape of a spine, not quite reaching the vertex. Antennae strong, hairy, distant at the base. Eyes oval, with straight inner edge.

Pronotum strongly arched, compressed (*laterally*), the anterior edge arched and jutting forward over the occiput, the posterior edge straight, the posterior corners right-angled or sub-acute, rounded below. Sternum quite large.

Legs hairy, long and wiry, except for the femora, which are somewhat bulging in the proximal half. Coxae distant from one another; the anterior ones armed with a spine on the anterior edge. Fore and mid tibiae unarmed above, armed below with few spines in the distal half. Hind femora slender and linear in almost the whole distal half, armed with occasional spines on the inner edge; hind tibiae armed along their whole length with rather strong spines, and with four apical spurs; the two superior spurs longer than the inferior ones; tibiae rounded below and armed with few spines near the apex; the first two segments of the hind tarsi ending above with two short spines.

Suranal plate rather large and rounded; cerci extending beyond its rear edge, even though they are only of mediocre length. Subgenital plate longer than the pronotum, its outline lanceolate, triangular in appearance from below, finely streamlined; the extremity entirely squeezed into the shape of a triangular blade and showing above an elliptic horizontal plate mounted on the edge of the blade. Styli inserted in front of the middle of the plate, large, cylindrical, pointed at the apex.

This genus strongly resembles *Pachyrhamma* Brunner von Wattenwyl; it differs from it notably because of distance between the two antennae and between the coxae, the absence of an apical spine on the fore femur, the two-pointed fastigium, the size of the antennae, the size of the cerci, and the shape of the subgenital plate.

Pharmacus montanus sp. nov.

Male

| | |
|-------------|-------|
| Body length | 11mm |
| Pronotum | 3.5mm |
| Hind femur | 10mm |

♂. Insect entirely black; the head and the underside of the scape of the antennae chestnut brown; mandibles and their articulations testaceous with brown patches; sternum and ventral regions testaceous. The lateral edges of the pronotum are finely hemmed, almost straight or slightly curved, the anterior angles rounded and obtuse. The first two pairs of femora are unarmed below; the hind femora are armed with one or two very small spines on the inner edge. The fore and middle tibiae are armed with three pairs of very small, testaceous spines in the lower half, including the apical pair. The hind tibiae are flattened above, with two longitudinal ribs, each armed with 16 to 18 black spines with a red tip. The interior dorsal spur does not reach to the middle of the metatarsus. The apex of the hind tibiae is armed below with three small spines, two of which are on the inner edge. All metatarsi are reddish.

The subgenital plate is slightly keeled underneath; above, the elliptical plate that forms the second half is undercut, sub-punctuated (?), truncated at the base, then notched or split diagonally from top to bottom; the basal half (*of the subgenital plate*) is divided into two by a groove and ends in two rounded and divergent stumps.

Origin: New Zealand: Mount Cook, collected by Mr Maoring [*Mannering*] at an elevation of 7000 feet.

We also have a male nymph that seems to fall within the same genus, but presents the following differences¹:

Body testaceous yellow, brownish above. Antennae strong, mostly brown but with occasional yellow segments. Legs not as long; hind femora more bulging, getting thinner only in the apical third, the interior edge armed with a strong spine just before the extremity. Spines on the hind tibia very short. Fore and mid tibiae have the inferior edges covered with short hair, but without any proper spines. Legs and cerci tessellated brown.

¹ Note: The description of this nymph appears to be a first mention of *Notoplectron brewsterense* (Richards, 1972) comb. nov.

English translation of the original description from the German language in:

Karny H. 1935. Die Gryllacrididen des Pariser Museum und der Collection L. Chopard. *Eos* 10(3-4): 383-385.

Isoplectron cochleatum sp. nov.

1 ♂ (Holotype), 1 ♀ (Allotype), New Zealand, Nelson, Filhol, 1876. 1 ♂, 1 ♀ (Paratypes), no location given.

| | Body length | Length of pronotum | Fore femur length | Mid femur length | Hind femur length | Hind tibia length | Length of ovipositor |
|------------|-------------|--------------------|-------------------|------------------|-------------------|-------------------|----------------------|
| | (mm) | (mm) | (mm) | (mm) | (mm) | (mm) | (mm) |
| ♂ Holotype | 16 | 3.7 | 7.5 | 7.6 | ? | ? | - |
| ♀ Allotype | 9.5 | 2.8 | 4.2 | 4 | 9 | 8 | 6 |
| ♂ Paratype | 18.3 | 4 | ? | ? | ? | ? | - |
| ♀ Paratype | 10.3 | 4.2 | 5.4 | 4.5 | ? | ? | 10 |

The overall coloration of the body is shown in Figure 44 (♂ Paratype): the light areas are yellow-brown, while the dark areas are black or nearly black. The Holotype shows the same coloration. The ♀ Paratype shows the same colour pattern, only the dark regions are larger in places and less clearly delimited, giving the whole animal a darker look overall. The ♀ Allotype finally looks evenly coloured grey-brown when observed superficially; yet it shows a similar colour pattern when observed under a magnifying glass, only more faded out and less sharply delimited, the dark areas grey-brown and nowhere nearly as dark as in the other specimen. The noticeably less pronounced colour

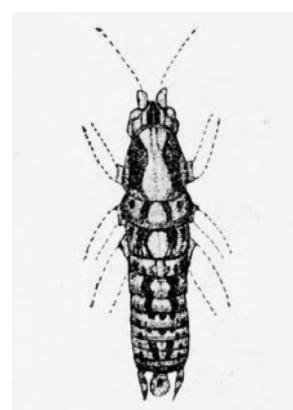


Fig. 44. - *Isoplectron cochleatum* Male Paratype. Enlarged one and a half times.

pattern can probably be explained by the fact that this is certainly a juvenile individual; I chose it nonetheless as Allotype, because it is the only one of the four specimen that has its hind legs. And as an asides, I am convinced that the four specimen belong to the same species. The colour of the legs is rust brown, marbled with very blurry and faded dark grey spots. The near end of the

femora is mainly light coloured, while the distal half is predominantly dark. The ovipositor is rusty yellow, barely darker at the tip.

The overall body build corresponds to the plump forms (of Rhabdophoridae); in New Zealand it reminds of *Talitropsis* or *Neonetus* (see the figures in Brunner). It does not at all resemble the long-legged genera (*Pachyrhamma*, *Macropathus*, etc.) and from these at a first glance it differs even more strongly than from *Onosandrus*. This species (*I. cochleatum*) has nothing to do with the genus *Onosandrus* though, not only because of the shape of the legs, but also because of the immediately obvious sharp, deep longitudinal groove that divides the fastigium into two. The face has a broad oval shape when observed frontally; the frons is very wide, dark, entirely crossed in the middle by a yellow band that broadens at the lower end. The dark region of the frons is much reduced in the ♀ Paratype; the whole frons appears light-coloured. Cheeks and mandibles are light coloured, while the clipeus and the labium are darker than the mandibles, but lighter than the dark region of the frons; in the ♀ Paratype they are just as light as the mandibles. The palpus is relatively short and stout.

The pronotum is about as long as it is wide at its posterior edge; it is narrower in front, and has weakly rounded anterior and posterior margins. The lateral lobes are much longer than they are wide, with an almost linear, strongly inclined anterior margin, which gradually turns into the broadly rounded, obtuse-angled anterior corner. The inferior margin is weakly arced, distinctly ascending towards the rear, with a posterior corner that is strongly rounded and right-angled. The posterior margin of the pronotum is linear and does not have a shoulder-bight (?). The anterior coxae have a short, strong, sharp spine. The anterior femora are covered with rather appressed, short, thick hair; the knee pads are rounded and unarmed. The anterior tibiae are entirely unarmed above (even without apical thorns!), while underneath they have a pair of spines in the middle, one pair not far from the apex and one pair at the apex. The middle legs are very much like the anterior ones, only the interior knee pads are armed with a not very long but obvious, needle shaped, mobile spine, and the middle tibiae also have an interior dorsal apical spine. The hind femora are plump, cricket-like, about as long as the body, the apical end short and not too much narrower (than the basal end); in the distal half they are armed underneath and outside with three minute, then two somewhat larger, tooth-shaped, pointy spines. The inferior inner edge of the hind femora is armed near the apex with three spines about equal in size, only marginally larger than the larger ones on the outer edge. The hind tibiae are armed with seven pointy spines on the outside, eight on the inside; the first few spines are very small, while the remaining ones are well developed, the interior ones as long as the width of the tibia, the exterior ones a little shorter. The tarsi are short and compact. The hind metatarsi and the second tarsal

segments are armed dorsally with two well developed, large, pointy, paired apical spines; otherwise they are entirely unarmed.

The last tergite in the male is very thin on the sides, and is cut out with a deep arc over the base of each cercus; further inside it is shaped like a large, roughly equilateral triangle, transversely supported at the end. At the end and above there is a swelling oriented upwards, with a deep apical groove in the middle, on either side of which protrudes a knob oriented upwards and backwards. The cerci are cylindrical, thick and not very long, blunt at the end, barely reaching beyond the end of the subgenital plate. The styli are about one third in length and width compared to the cerci. The male subgenital plate is approximately square in the basal part, with blunt posterior corners, where the styli are inserted. From here it becomes suddenly narrower and on both sides strongly arced (almost semi-circular) on the edges, then it widens again in the shape of a spoon, forming a near circular apical lobe. The subgenital plate is divided in the middle on its whole length by a very sharp, almost leaf-vein like longitudinal keel projecting downwards. This keel forks right at the base, forming a small, about equilateral triangle.

The ovipositor looks the same as in *Talitropsis* (see the figure in Brunner). The female subgenital plate is short, small, cut out at a right angle from the base to the extremity, with equilateral triangular lobes.

In light of its body build and spines on the legs this species belongs without doubt to the genus *Isoplectron*. It differs from other known species in this genus in its very distinctive genitalia.



Fig. S2. *Pharmacus montanus* Pictet and de Saussure, 1893, adult ♂. Holotype. Collected by George Mannering in the surrounds of Aoraki / Mount Cook (MHNG ARTO-24289). Image courtesy of Peter J. Schwendinger, Curator, Department of Arthropodology and Entomology I, MHNG.

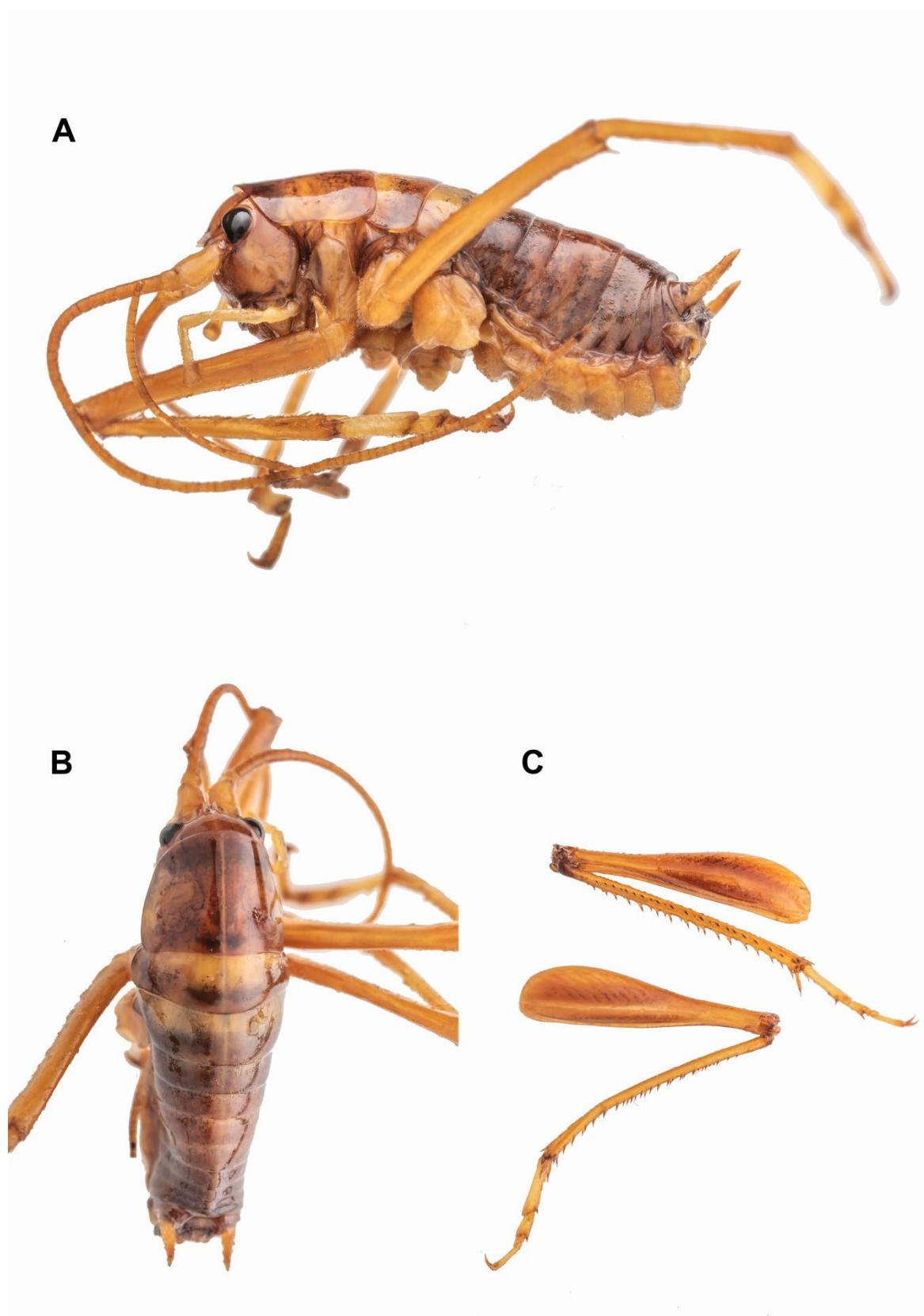


Fig. S3. *Pharmacus dumbletoni* Richards, 1972, adult ♂. Holotype. Collected by L.J. Dumbleton on Mount Mahanga, Spenser Mountains, in October 1950 (NZAC 03015679). **A.** Lateral view **B.** Dorsal view. **C.** Hind legs, lateral (exterior) view.



Fig. S4. *Pharmacus chapmanae* Richards, 1972. Bevan Col, Matukituki Valley. **A.** Holotype, adult ♂ (OMNZ IV7927; prev. OMNZ A70:6). **B.** Allotype, adult ♀ (OMNZ IV7924; prev. OMNZ A70:8).

Table S1. Material examined of *Pharmacus montanus* Pictet and de Saussure, 1893. All specimens collected in New Zealand. Collector abbreviations: DH = Danilo Hegg, GM = George Mannering, LJD = Lionel Jack Dumbleton.

| Entomological Region | Material | Locality | Coordinates | Elevation m a.s.l. | Micro-habitat | Collecting method | Date | Collector | Institution code | Specimen code |
|---------------------------------------|------------------|---------------------------------------|-------------------------|--------------------|-----------------------------|---------------------------|--------------|-----------|------------------|---|
| MK (Mackenzie) | 1♂ | Mount Cook region | 43.75°S, 170.06°E | 2,100 | | | | GM | MHNG | ARTO-24289 |
| BR (Buller) | 1♂ | Mount Mahanga, Spenser Mountains | 42.102°S, 172.635°E | 2,100 | | | Oct. 1950 | LJD | NZAC | 03015679 (<i>Pharmacus dumbletoni</i> holotype) |
| MK (Mackenzie) | 1♀ | Mt Annette, Sealy Range | 43.75129°S, 170.06210°E | 2,200 | Summit rocks, above glacier | Night search | 25 Feb. 2017 | DH | MPN; GenBank | CW3303; OM293693 |
| MK (Mackenzie) | 1♂, 1♀ | Same as above | | | | | | | MPN | CW3302, CW3323 |
| MK (Mackenzie) | 1♂ | Mueller Hut Track, Sealy Range | 43.71504°S, 170.06982°E | 1,500 | Under large boulder | Night search + insect net | 24 Feb. 2017 | DH | MPN; GenBank | CW3300; OM293692 |
| MK (Mackenzie) | 3♂♂, 2nymphs | Same as above | | | | | | | MPN | CW3299, CW3532 – 3535 |
| MK (Mackenzie) | 1nymph | Mt Wakefield, Mount Cook Range | 43.70707°S, 170.12170°E | 1,660 | On bluffs | Night search + insect net | 18 Mar. 2017 | DH | MPN; GenBank | CW3330; OM293695 |
| MK (Mackenzie) | 4♀♀, 1nymph | Same as above | | | | | | | MPN | CW3331, CW3406, CW3660 – 3662 |
| MK (Mackenzie) | 1♀, 1nymph | Mt Wakefield, Mount Cook Range | 43.71989°S, 170.12771°E | 1,750 | On rocky ridge | Night search + insect net | 13 May 2017 | DH | MPN | CW3516, CW3699 |
| NC / WD (North Canterbury / Westland) | 1nymph | Lake Anna, Mt Franklin, Arthur's Pass | 42.87567°S, 171.65048°E | 1,720 | On bluffs | Night search | 23 Dec. 2017 | DH | MPN; GenBank | CW3650; OM293702 |
| NC / WD (North Canterbury / Westland) | 1♂, 1♀ | Same as above | | | | | | | MPN | CW3988, CW3989 |
| BR (Buller) | 1♂ | Gloriana Peak, Spenser Mountains | 42.27437°S, 172.48992°E | 1,750 | On bluffs | Night search + insect net | 5 Feb. 2017 | DH | MPN; GenBank | CW3262; OM293689 |
| BR (Buller) | 1♂, 1♀, 2nymphs | Same as above | | | | | | | MPN | CW3263 – 3266 |
| BR (Buller) | 4♂♂, 2♀♀ | Same as above | | | | | 25 Apr. 2017 | DH | MPN | CW3656 – 3659, CW3665, CW3666 |
| NN (Nelson) | 1♀ | Poverty Basin, Mount Owen | 41.54712°S, 172.52864°E | 1,640 | On bluffs | Night search + insect net | 8 Jan. 2019 | DH | MPN; GenBank | CW4275; OM293708 |
| NN (Nelson) | 4♂♂, 1♀, 4nymphs | Same as above | | | | | | | MPN | CW4272, CW4273, CW4446 – 4450, CW4456, CW4457 |

Table S1 Continued. Material examined of *Pharmacus montanus* Pictet and de Saussure, 1893. All specimens collected in New Zealand. Collector abbreviations: DH = Danilo Hegg, GM = George Mannering, LJD = Lionel Jack Dumbleton

| Entomological Region | Material | Locality | Coordinates | Elevation m a.s.l. | Micro-habitat | Collecting method | Date | Collector | Institution code | Specimen code |
|----------------------|----------|--|-------------------------|--------------------|----------------|---------------------------|--------------|-----------|------------------|---------------|
| MK (Mackenzie) | 1nymph | Same as above | | | | | | MPN | CW4875 | |
| BR (Buller) | 1♀ | Sunset Saddle / Mt Hopeless, Travers Range | 41.91926°S, 172.73519°E | 1,900 | In rocky chasm | Visual search in daylight | 31 Dec. 2020 | DH | MPN | CW5183 |

Table S2. Material examined of *Pharmacus cochleatus cochleatus* (Karny, 1935) comb. nov.. All specimens collected in New Zealand. Collector abbreviations: MAC = Margaret Ann Chapman, HF = Henri Filhol, DH = Danilo Hegg.

| Entomological Region | Material | Locality | Coordinates | Elevation m a.s.l. | Micro-habitat | Collecting method | Date | Collector | Institution code | Specimen code |
|--|-----------------|--|----------------------------|--------------------|--------------------------------------|---------------------------------|--------------|-----------|------------------|--|
| Unknown | 1♂ | Unknown | Unknown | | | | 1876 | HF | MNHN | EO-ENSIF4926 (Holotype) |
| Unknown | 1♂ | Unknown | Unknown | | | | 1876 | HF | MNHN | EO-ENSIF4928 (Paratype) |
| OL / WD (Otago Lakes / Westland) | 1♂ | Bevan Col, Matukituki Valley | 44.393°S, 168.689°E | 1,850 | | | Dec. 1958 | MAC | OMNZ | IV7927 (<i>P. chapmanae</i> holotype) |
| OL / WD (Otago Lakes / Westland) | 1♀ | Same as above | | | | | | | OMNZ | IV7924 (<i>P. chapmanae</i> allotype) |
| OL / WD (Otago Lakes / Westland) | 1♂ | Bevan Col, Matukituki Valley | 44.39424°S, 168.68760°E | 1,850 | Rock bluffs | Night search + insect net | 29 Jan. 2021 | DH | MPN; GenBank | CW5179; OM293736 |
| OL / WD (Otago Lakes / Westland) | 1♂, 1♀ | Same as above | | | | | | | MPN | CW5178, CW5180 |
| OL (Otago Lakes) | 1♀, 1nymph | 100m below Bevan Col, Matukituki Valley | 44.39546°S, 168.68503°E | 1,750 | Rock slabs | Casual find while climbing | 29 Jan. 2021 | DH | MPN | CW5181, CW5182 |
| OL (Otago Lakes) | 1♂ | Sentinel Peak, Lake Hāwea | 44.40236°S, 169.23499°E | 1,760 | On rocks on sides of snow couloir | Casual find, Photograph only | 20 Dec. 2015 | DH | iNaturalist | 2494265 |
| OL (Otago Lakes) | 1♂ | Sentinel Peak, Lake Hāwea | 44.41029°S, 169.24003°E | 1,580 | Rocky ridge | Night search + insect net | 5 Dec. 2020 | DH | MPN; GenBank | CW5134; OM293731 |
| OL (Otago Lakes) | 2♂♂, 2nymphs | Same as above | | | | | | | MPN | CW5132, CW5133, CW5135, CW5136 |
| OL (Otago Lakes) | 1♀ | Luna Basin, Major Peak, Wakatipu | 44.92490°S, 168.47476°E | 1,470 | On large rocks in alpine basin | Night search | 9 Apr. 2016 | DH | MPN; GenBank | CW2985; OM293686 |
| OL (Otago Lakes) | 3♂♂, 1♀ | Same as above | | | | | | | MPN | CW2979, CW2981, CW2999, CW3000 |
| MK (Mackenzie) | 1♀ | Dasler Pinnacles, Naumann Range | 43.95237°S, 169.86241°E | 1,800 | On rock bluffs | Night search | 14 Jan. 2017 | DH | MPN; GenBank | CW3284; OM293691 |
| MK (Mackenzie) | 3♂♂ | Same as above | | | | | | | MPN | CW3283, CW3285, CW3296 |
| MK (Mackenzie) | 1♂ | Mt Edgar Thomson, Ben Ōhau Range | 43.78252°S, 170.05561°E | 2,350 | On mixed rock- snow ridge | Casual find while climbing | 28 Jan. 2017 | DH | MPN; GenBank | CW3278; OM293690 |
| WD (Westland) | 1♀ | Topheavy, Mt Brewster, Haast Pass | 44.06548°S, 169.42843°E | 2,000 | On rocky ridge above glacier | Night search | 18 Feb. 2017 | DH | MPN; GenBank | CW3322; OM293694 |

Table S2 Continued. Material examined of *Pharmacus cochleatus cochleatus* (Karny, 1935) comb. nov.. All specimens collected in New Zealand. Collector abbreviations: MAC = Margaret Ann Chapman, HF = Henri Filhol, DH = Danilo Hegg.

| Entomological Region | Material | Locality | Coordinates | Elevation m a.s.l. | Micro-habitat | Collecting method | Date | Collector | Institution code | Specimen code |
|----------------------|-------------------|--------------------------------------|--------------------------|--------------------|-----------------------------------|----------------------------|--------------|-----------|------------------|---|
| WD (Westland) | 2♂♂, 5♀♀ | Same as above | | | | | | | MPN | CW3277, CW3279 – 3282, CW3324, CW3325 |
| OL (Otago Lakes) | 1♀ | Lochnagar, Richardson Mountains | 44.59627°S, 168.56400°E | 2,080 | On rocks on sides of snow couloir | Casual find while climbing | 21 Sep. 2019 | DH | MPN; GenBank | CW4590; OM293726 |
| CO (Central Otago) | 1♂ | Mt Pisa, Pisa Range | 44.88278°S, 169.19500°E | 1,650 | On rocky tors | Night search + insect net | 27 Feb. 2018 | DH | MPN; GenBank | CW3831; OM293705 |
| CO (Central Otago) | 4♂♂, 5♀♀, 2nymphs | Same as above | | | | | | | MPN | CW3795 – 3797, CW3828 – 3830, CW3847 – 3851 |
| OL (Otago Lakes) | 1nymph | Coronet Peak, Queenstown | 44.91774°S, 168.73423°E | 1,540 | On rock formations | Night search + insect net | 18 Jan. 2019 | DH | MPN; GenBank | CW4288; OM293709 |
| OL (Otago Lakes) | 5♂♂, 3♀♀ | Same as above | | | | | | | MPN | CW4414 – 4418, CW4432 – 4434 |
| OL (Otago Lakes) | 2♂♂ | Earnslaw Burn | 44.67482°S, 168.39371°E | 1,280 | Rocky ridge and cliffs | Night search + insect net | 13 Nov. 2020 | DH | MPN; GenBank | CW5149, CW5150; OM293733, OM293734 |
| OL (Otago Lakes) | 1♂, 1♀, 2nymphs | Same as above | | | | | | | MPN | CW5151 – 5154 |
| OL (Otago Lakes) | 1 nymph | Turret Head, Earnslaw Burn | -44.65757°S, 168.37977°E | 2,300 | On rocky ridge | Causal find while climbing | 2 Feb. 2021 | DH | MPN; GenBank | CW5176; OM293735 |
| OL (Otago Lakes) | 1 nymph | Same as above | | | | | | | MPN | CW5175 |
| OL (Otago Lakes) | 3♂♂, 1♀, 1nymph | Turret Head, Earnslaw Burn | 44.65681°S, 168.38646°E | 2,100 | On rock bluffs | Night search + insect net | 2 Feb. 2021 | DH | MPN | CW5244 – 5247, CW5177 |
| OL (Otago Lakes) | 1♀ | Roys Peak, Wānaka | 44.69477°S, 169.04644°E | 1,500 | Rock bluffs | Night search + insect net | 19 Nov. 2020 | DH | MPN; GenBank | CW5137; OM293732 |
| OL (Otago Lakes) | 5♂♂, 2♀♀, 2nymphs | Same as above | | | | | | | MPN | CW5138 – 5144, CW5147, CW5148 |
| OL (Otago Lakes) | 1♂, 2♀♀, 5nymphs | Albertburn Saddle | 44.39752°S, 168.87310°E | 1,600 | Rock bluffs | Night search + insect net | 5 Feb. 2021 | DH | MPN | CW5170 – 5174, CW5238 – 5240 |
| OL (Otago Lakes) | 2♂♂, 1♀ | East Matukituki / Albert Burn divide | 44.36994°S, 168.8887°E | 1,830 | Rock bluffs | Night search + insect net | 6 Feb. 2021 | DH | MPN | CW5241 – 5243 |
| OL (Otago Lakes) | 2♀♀ | French Ridge, Matukituki Valley | 44.42520°S, 168.69874°E | 1,800 | Rocky ridge | Night search + insect net | 20 Feb. 2021 | DH | MPN | CW5207, CW5208 |

Table S3. Material examined of *Pharmacus cochleatus nauclerus* subsp. nov.. All specimens collected in New Zealand. Collector abbreviations: DH = Danilo Hegg.

| Entomological Region | Material | Locality | Coordinates | Elevation m a.s.l. | Micro-habitat | Collecting method | Date | Collector | Institution code | Specimen code |
|----------------------|----------------|---------------------------|-------------------------|--------------------|-----------------------|-------------------|-------------|-----------|------------------|---|
| WD (Westland) | 1♂ | Skippers Range | 44.50459°S, 168.12086°E | 1,400 | Rock bluffs | Night search | 7 Feb. 2019 | DH | NMNZ | AI.052288 (Holotype) (Previously MPN CW4412) |
| WD (Westland) | 1nymph | Same as holotype | | | | | | | MPN; GenBank | CW4361; OM293710 |
| WD (Westland) | 2♀♀ | Same as holotype | | | | | | | MPN | CW4379, CW4380 |
| WD (Westland) | 1♀ | Skippers Range High Point | 44.43914°S, 168.16515°E | 1,600 | Scree and rock bluffs | Night search | 3 Feb. 2019 | DH | NMNZ | AI.052289 (Paratype) (Previously MPN CW4376) |
| WD (Westland) | 1nymph | Same as paratype | | | | | | | MPN; GenBank | CW4363; OM293711 |
| WD (Westland) | 1♂, 1♀, 1nymph | Skippers Range | 44.42005°S, 168.15399°E | 1,360 | Rock bluffs | Night search | 2 Feb. 2019 | DH | MPN | CW4366, CW4378, CW4413 |
| WD (Westland) | 1♀ | Skippers Range | 44.46821°S, 168.10095°E | 1,200 | Rock bluffs | Night search | 6 Feb. 2019 | DH | MPN; GenBank | CW4374; OM293713 |
| WD (Westland) | 2♂♂, 1♀ | Same as above | | | | | | | MPN | CW4377, CW4410, CW4411 |

Table S4. Material examined of *Pharmacus cochleatus fiordensis* subsp. nov.. All specimens collected in New Zealand. Collector abbreviations: DH = Danilo Hegg, TJ = Tony Jewell.

| Entomological Region | Material | Locality | Coordinates | Elevation m a.s.l. | Micro-habitat | Collecting method | Date | Collector | Institution code | Specimen code |
|----------------------|-----------------|-----------------------------------|-------------------------|--------------------|--------------------------------|------------------------------|--------------|-----------|------------------|--|
| FD (Fiordland) | 1♂ | Gertrude Saddle, Darran Mountains | 44.74521°S, 168.01649°E | 1,300 | On rock bluffs | Night search | 25 Mar. 2017 | DH | NMNZ; GenBank | AI.052286 (Holotype) (Previously MPN CW3413); OM293697 |
| FD (Fiordland) | 1nymph | Same as holotype | | | | | | | MPN | CW3412 |
| FD (Fiordland) | 1♀ | Mount Luxmore, Kepler Mountains | 45.38929°S, 167.59154°E | 1,350 | Rock bluffs | Night search + insect net | 22 Mar. 2019 | DH | NMNZ | AI.052287 (Paratype) (Previously MPN CW4398) |
| FD (Fiordland) | 1♂ | Same as paratype | | | | | | | MPN; GenBank | CW4397; OM293718 |
| FD (Fiordland) | 3 nymphs | Same as paratype | | | | | | | MPN | CW4547 – 4549 |
| FD (Fiordland) | 1♀ | Homer Saddle, Darran Mountains | 44.760°S, 167.983°E | 1,200 | In dry cracks in rock bluff | Hand collected, in daylight | Jan. 2014 | TJ | MPN | CW2611 |
| OL (Otago Lakes) | 1♀ | Emily Peak, Ailsa Mountains | 44.74594°S, 168.20446°E | 1,800 | On snowgrass | Casual find, Photograph only | 14 Feb. 2015 | DH | iNaturalist | 2421936 |
| OL (Otago Lakes) | 1♂ | Ocean Peak, Ailsa Mountains | 44.75041°S, 168.17270°E | 1,300 | On large rocks in alpine basin | Night search | 29 Oct. 2016 | DH | MPN; GenBank | CW3135; OM293687 |
| OL (Otago Lakes) | 1♂, 3♀♀, 1nymph | Same as above | | | | | | | MPN | CW3133, CW3134, CW3136, CW3137, CW4127 |
| OL (Otago Lakes) | 1♀ | Humboldt Mountains | 44.74356°S, 168.21742°E | 1,800 | On rock bluffs | Night search | 8 Apr. 2017 | DH | MPN; GenBank | CW3405; OM293696 |
| OL (Otago Lakes) | 1♂ | Same as above | | | | | | | MPN | CW3411 |

Table S5. Material examined of *Pharmacus cochleatus rawhiti* subsp. nov.. All specimens collected in New Zealand. Collector abbreviations: DH = Danilo Hegg

| Entomological Region | Material | Locality | Coordinates | Elevation m a.s.l. | Micro-habitat | Collecting method | Date | Collector | Institution code | Specimen code |
|----------------------|-------------------|-----------------------------------|-------------------------|--------------------|---------------------|---------------------------|--------------|-----------|------------------|---|
| CO (Central Otago) | 1♂ | Mt Tūwhakarōria, Hector Mountains | 45.12771°S, 168.82939°E | 2,000 | On large boulder | Night search + insect net | 25 Apr. 2019 | DH | NMNZ | AI.052290 (Holotype) (Previously MPN CW4429) |
| CO (Central Otago) | 1♀ | Same as holotype | | | | | | | MPN; GenBank | CW4395; OM293717 |
| CO (Central Otago) | 3♂♂, 1♀ | Same as holotype | | | | | | | MPN | CW4396, CW4428, CW4430, CW4431 |
| CO (Central Otago) | 1♀ | James Peak, Hector Mountains | 45.26417°S, 168.81555°E | 1,600 | Cracks in rock tors | Night search + insect net | 17 Feb. 2018 | DH | NMNZ | AI.052291 (Paratype) (Previously MPN CW3833) |
| CO (Central Otago) | 2♂♂ | Same as paratype | | | | | | | MPN; GenBank | CW3769, CW3838; OM293704, OM293706 |
| CO (Central Otago) | 2♂♂, 3♀♀, 1nymph | Same as paratype | | | | | | | MPN | CW3770, CW3832, CW 3834 – 3837 |
| CO (Central Otago) | 1♀ | Gem Lake, Umbrella Mountains | 45.57097°S, 169.10525°E | 1,300 | Boulder field | Night search + insect net | 13 Apr. 2019 | DH | MPN; GenBank | CW4465; OM293720 |
| CO (Central Otago) | 5♂♂, 1♀ | Same as above | | | | | | | MPN | CW4466 – 4471 |
| CO (Central Otago) | 1♀ | Blue Lake Creek, Garvie Mountains | 45.46778°S, 168.95290°E | 1,280 | On rock tors | Night search + insect net | 21 Apr. 2019 | DH | MPN; GenBank | CW4425; OM293719 |
| CO (Central Otago) | 6♂♂, 3♀♀, 3nymphs | Same as above | | | | | | | MPN | CW4424, CW4426, CW4427, CW4458 – 4464, CW4510, CW4511 |
| OL (Otago Lakes) | 1nymph | Cerberus, Livingstone Mountains | 45.28570°S, 168.14069°E | 1,460 | On rocky outcrop | Night search | 26 Jun. 2020 | DH | MPN; GenBank | CW4895; OM293730 |
| OL (Otago Lakes) | 1♀ | Mt Turnbull, Thomson Mountains | 45.13566°S, 168.32134°E | 1,600 | On rock bluffs | Night search + insect net | 15 Jan. 2021 | DH | MPN; GenBank | CW5193; OM293737 |
| OL (Otago Lakes) | 8♂♂, 2♀♀ | Same as above | | | | | | | MPN | CW5184 – 5192, CW5194 |
| CO (Central Otago) | 2♂♂, 1♀ | Lake Alta, The Remarkables | 45.06176°S, 168.81096°E | 1,820 | On large boulder | Night search + insect net | 26 Mar. 2021 | DH | MPN | CW5219 – 5221 |

Table S6. Material examined of *Pharmacus cristatus* sp. nov.. All specimens collected in New Zealand. Collector abbreviations: DH = Danilo Hegg, TJ = Tony Jewell

| Entomological Region | Material | Locality | Coordinates | Elevation m a.s.l. | Micro-habitat | Collecting method | Date | Collector | Institution code | Specimen code |
|----------------------|-----------------|-----------------------------------|-------------------------|--------------------|-----------------------------|-----------------------------|--------------|-----------|------------------|--|
| WD (Westland) | 1♂ | Skippers Range High Point | 44.43914°S, 168.16515°E | 1,520 | On rock bluffs | Night search | 3 Feb. 2019 | DH | NMNZ | AI.052292 (Holotype) (Previously MPN CW4561) |
| WD (Westland) | 1♀ | Same as holotype | | | | | | | NMNZ | AI.052293 (Paratype) (Previously MPN CW4486) |
| WD (Westland) | 1♀ | Same as holotype | | | | | | | MPN; GenBank | CW4485; OM293723 |
| WD (Westland) | 1♂, 1♀, 2nymphs | Same as holotype | | | | | | | MPN | CW4365, CW4376, CW4484, CW4562 |
| WD (Westland) | 1♂ | Skippers Range | 44.46821°S, 168.10095°E | 1,200 | On rock bluffs | Night search | 6 Feb. 2019 | DH | MPN; GenBank | CW4563; OM293725 |
| WD (Westland) | 1nymph | Skippers Range | 44.50459°S, 168.12086°E | 1,400 | On rock bluffs | Night search | 7 Feb. 2019 | DH | MPN; GenBank | CW4364; OM293712 |
| FD (Fiordland) | 2♂♂ | Homer Saddle, Darran Mountains | 44.760°S, 167.983°E | 1,200 | In dry cracks in rock bluff | Hand collected, in daylight | Jan. 2014 | TJ | MPN; GenBank | CW2607, CW2610; OM293684, OM293685 |
| FD (Fiordland) | 1♀, 1nymph | Same as above | | | | | | | MPN | CW2608, CW2609 |
| FD (Fiordland) | 1nymph | Gertrude Saddle, Darran Mountains | 44.74521°S, 168.01649°E | 1,300 | On rock bluffs | Night search | 25 Mar. 2017 | DH | MPN; GenBank | CW3415A; OM293698 |
| FD (Fiordland) | 2♂♂, 2nymphs | Same as above | | | | | | | MPN | CW3398, CW3399, CW3414, CW3415B |
| FD (Fiordland) | 1♂ | Mistake Creek, Earl Mountains | 44.85123°S, 168.02471°E | 1,000 | Under boulder | Night search | 21 Apr. 2017 | DH | MPN; GenBank | CW3431; OM293700 |

Table S7. Material examined of *Pharmacus notabilis* sp. nov.. All specimens collected in New Zealand. Collector abbreviations: DH = Danilo Hegg, TJ = Tony Jewell

| Entomological Region | Material | Locality | Coordinates | Elevation m a.s.l. | Micro-habitat | Collecting method | Date | Collector | Institution code | Specimen code |
|----------------------|-------------------|-----------------------------------|-------------------------|--------------------|-----------------------------|---------------------------|--------------|-----------|------------------|--|
| CO (Central Otago) | 1♂ | Remarkables Ski-field Access Road | 45.02651°S, 168.79748°E | 1,220 | Boulders in road escarpment | Night search + insect net | 12 May 2017 | DH | NMNZ | AI.052296 (Holotype) (Previously MPN CW3528) |
| CO (Central Otago) | 1♀ | Same as holotype | | | | | | | MPN; GenBank | CW3509; OM293701 |
| CO (Central Otago) | 3♂♂, 3♀♀, 5nymphs | Same as holotype | | | | | | | MPN | CW3510 – 3513, CW3524 – 3527, CW3529 – 3431 |
| CO (Central Otago) | 1♀ | Two Mile Hut, Hector Mountains | 45.17392°S, 168.80270°E | 1,460 | Large boulders | Night search + insect net | 26 Apr. 2019 | DH | NMNZ | AI.052297 (Paratype) (Previously MPN CW4394) |
| CO (Central Otago) | 1♂ | Same as paratype | | | | | | | MPN; GenBank | CW4391; OM293716 |
| CO (Central Otago) | 2♂♂, 1nymph | Same as paratype | | | | | | | MPN | CW4392, CW4393, CW4500 |
| CO (Central Otago) | 2♂♂ | Remarkables North ridge | 45.0413°S, 168.7977°E | 1,600 | Cracks in rock bluffs | | Jan. 2013 | TJ | MPN; GenBank | CW2587, CW2589; OM293682, OM293683 |
| CO (Central Otago) | 1♂, 5♀♀ | Same as above | | | | | | | MPN | CW2588, CW2590 – 2594 |

Table S8. Material examined of *Pharmacus senex* sp. nov.. All specimens collected in New Zealand. Collector abbreviations: DH = Danilo Hegg, SAT = Steve Trewick, TJ = Tony Jewell.

| Entomological Region | Material | Locality | Coordinates | Elevation m a.s.l. | Micro-habitat | Collecting method | Date | Collector | Institution code | Specimen code | |
|----------------------|-------------------|-----------------------------|-------------------------|--------------------|---------------------|---------------------------|--------------|-----------|------------------|--|---|
| CO (Central Otago) | 1♂ | Near Obelisk, Old Man Range | 45.32567°S, 169.20826°E | 1,680 | Cracks in rock tors | Night search + insect net | 1 Dec. 2017 | DH | NMNZ | AI.052294 (Holotype) (Previously MPN CW3867) | |
| CO (Central Otago) | 8♂♂, 7♀♀, 4nymphs | Same as holotype | | | | | | | | MPN | CW3860 – 3866, CW3868 – 3879, |
| CO (Central Otago) | 1♀ | Old Woman Range | 45.23048°S, 169.05058°E | 1,630 | Cracks in rock tors | Night search + insect net | 3 May 2019 | DH | NMNZ | AI.052295 (Paratype) (Previously MPN CW4408) | |
| CO (Central Otago) | 1♂ | Same as paratype | | | | | | | | MPN; GenBank | CW4389; OM293715 |
| CO (Central Otago) | 4♂♂, 3♀♀, 3nymphs | Same as paratype | | | | | | | | MPN | CW4386 – 4388, CW4390, CW4406 – 4407, CW4409, CW4491 – 4493 |
| CO (Central Otago) | 1♀ | The Obelisk, Old Man Range | 45.323°S, 169.207°E | 1,680 | Cracks in rock tors | | 21 Jan. 2014 | SAT | MPN; GenBank | CW279; OM293676 | |
| CO (Central Otago) | 1♂ | Same as above | | | | | | | | MPN; GenBank | CW284B; OM293677 |
| CO (Central Otago) | 1♀ | Same as above | | | | | | | | MPN; GenBank | CW285; OM293678 |
| CO (Central Otago) | 1♂, 2♀♀, 1nymph | Same as above | | | | | | | | MPN | CW278A, B, CW280, CW284A |
| CO (Central Otago) | 1♀ | Near Obelisk, Old Man Range | 45.334°S, 169.210°E | 1,650 | Cracks in rock tors | | Jan. 2013 | TJ | MPN; GenBank | CW2580; OM293680 | |
| CO (Central Otago) | 1♂ | Same as above | | | | | | | | MPN; GenBank | CW2582; OM293681 |
| CO (Central Otago) | 1♂, 1♀ | Same as above | | | | | | | | MPN | CW2581, CW2583 |
| CO (Central Otago) | 1♂ | Dunstan, Dunstan Mountains | 45.04471°S, 169.37418°E | 1,670 | Cracks in rock tors | Night search + insect net | 10 May 2019 | DH | MPN; GenBank | CW4382; OM293714 | |
| CO (Central Otago) | 4♂♂, 4♀♀, 4nymphs | Same as above | | | | | | | | MPN | CW4381, CW4383 – 4385, CW4402 – 4405, CW4506 – 4509 |

Table S9. Material examined of *Pharmacus concinnus* sp. nov.. All specimens collected in New Zealand. Collector abbreviations: DH = Danilo Hegg, MT = Mike Thorsen

| Entomological Region | Material | Locality | Coordinates | Elevation m a.s.l. | Micro-habitat | Collecting method | Date | Collector | Institution code | Specimen code |
|----------------------|-------------------|--------------------------------|-------------------------|--------------------|----------------|---------------------------|--------------|-----------|------------------|--|
| OL (Otago Lakes) | 1♂ | Symmetry Peaks, Eyre Mountains | 45.27797°S, 168.59113°E | 1,500 | Rock tor | Night search + insect net | 12 May 2018 | DH | NMNZ | AI.052298 (Holotype) (Previously MPN CW3853) |
| OL (Otago Lakes) | 1♀ | Same as holotype | | | | | | | NMNZ | AI.052299 (Paratype) (Previously MPN CW3843) |
| OL (Otago Lakes) | 1nymph | Same as holotype | | | | | | | MPN; GenBank | CW4023A; OM293707 |
| OL (Otago Lakes) | 1♂, 1♀, 4nymphs | Same as holotype | | | | | | | MPN | CW3842, CW3852, CW4023B–E |
| OL (Otago Lakes) | 1♀ | Eyre Peak, Eyre Mountains | 45.33260°S, 168.47225°E | 1,500 | On rock bluffs | Night search + insect net | 16 Feb. 2019 | DH | MPN; GenBank | CW4477; OM293722 |
| OL (Otago Lakes) | 4♂♂, 3♀♀, 1nymph | Same as above | | | | | | | MPN | CW4367, CW4476, CW4478 – 4483 |
| OL (Otago Lakes) | 1♀ | Mount Dick, Eyre Mountains | 45.26572°S, 168.69083°E | 1,550 | On rock bluffs | Night search + insect net | 16 Mar. 2019 | DH | MPN; GenBank | CW4472; OM293721 |
| OL (Otago Lakes) | 4♂♂, 3♀♀, 2nymphs | Same as above | | | | | | | MPN | CW4473 – 4475, CW4501 – 4504, CW4592, CW4593 |
| OL (Otago Lakes) | 1♀ | Billy Creek, Eyre Mountains | 45.30540°S, 168.45460°E | 1,400 | On rock bluffs | Casual find | 23 Feb. 2020 | MT | MPN; GenBank | CW4874; OM293727 |
| OL (Otago Lakes) | 1♀ | Same as above | | | | | | | MPN | CW4873 |

Table S10. Material examined of *Pharmacus perfidus* sp. nov.. All specimens collected in New Zealand. Collector abbreviations: DH = Danilo Hegg

| Entomological Region | Material | Locality | Coordinates | Elevation m a.s.l. | Micro-habitat | Collecting method | Date | Collector | Institution code | Specimen code |
|----------------------|-------------------|---------------------------------|-------------------------|--------------------|----------------|----------------------------|--------------|-----------|------------------|--|
| SL (Southland) | 1♂ | Spence Peak, Takitimu Mountains | 45.70540°S, 167.85058°E | 1,450 | On rocky ridge | Night search + insect net | 30 Mar. 2019 | DH | NMNZ | AI.052300 (Holotype) (Previously MPN CW4497) |
| SL (Southland) | 1♀ | Same as holotype | | | | | | | NMNZ | AI.052301 (Paratype) (Previously MPN CW4488) |
| SL (Southland) | 1♀ | Same as holotype | | | | | | | MPN; GenBank | CW4490; OM293724 |
| SL (Southland) | 5♂♂, 2♀♀, 3nymphs | Same as holotype | | | | | | | MPN | CW4487, CW4489, CW4494 – 4496, CW4498, CW4499, CW4553 – 4555 |
| SL (Southland) | 1♀ | Clare Peak, Takitimu Mountains | 45.63303°S, 167.94057°E | 1,300 | On rock bluffs | Night search + insect net | 23 May 2020 | DH | MPN; GenBank | CW4877; OM293729 |
| SL (Southland) | 3♂♂, 1nymph | Same as above | | | | | | | MPN | CW4878 – 4881 |
| SL (Southland) | 1♂ [dead] | Clare Peak, Takitimu Mountains | 45.63516°S, 167.91564°E | 1,340 | On snow slope | Casual find while climbing | 6 June 2021 | DH | MPN | CW5257 |

Table S11. Material examined of *Pharmacus vallestris* sp. nov.. All specimens collected in New Zealand. Collector abbreviations: DH = Danilo Hegg

| Entomological Region | Material | Locality | Coordinates | Elevation m a.s.l. | Micro-habitat | Collecting method | Date | Collector | Institution code | Specimen code |
|----------------------|------------|---------------------------------|-------------------------|--------------------|----------------|---------------------------|--------------|-----------|------------------|--|
| OL (Otago Lakes) | 1♂ | French Ridge, Matukituki Valley | 44.42560°S, 168.69784°E | 1,650 | On rocky ridge | Night search + insect net | 20 Feb. 2021 | DH | NMNZ | AI.052302 (Holotype) (Previously MPN CW5214) |
| OL (Otago Lakes) | 1♂, 1♀ | Same as holotype | | | | | | | MPN | CW5213, CW5215 |
| OL (Otago Lakes) | 1♀, 1nymph | French Ridge, Matukituki Valley | 44.42520°S, 168.69871°E | 1,700 | On rocky ridge | Night search + insect net | 22 Nov. 2020 | DH | MPN | CW5145, CW5146 |
| OL (Otago Lakes) | 1♀ | Matukituki River West Branch | 44.41637°S, 168.69130°E | 1,100 | Under boulder | Night search | 6 May 2017 | DH | NMNZ; GenBank | AI.052303 (Paratype) (Previously MPN CW3430); OM293699 |
| OL (Otago Lakes) | 1♂ | Same as paratype | | | | | | | MPN; GenBank | CW3700; OM293703 |

Table S12. Alpine locations searched, where no *Pharmacus* were found

| Entomological Region | Locality | Coordinates | Elevation m a.s.l. | Date | Species of Rhabdophoridae found |
|--|---------------------------------------|------------------------|--------------------|----------------------------------|---|
| FD (Fiordland) | Merrie Range, Tamatea Peak | 45.692°S, 167.168°E | 1,600 | 4 Jan. 2018 | <i>Notoplectron brewsterense</i> (Richards, 1972) comb. nov. |
| SL (Southland) | Blue Mountains | 45.898°S, 169.380°E | 870 | 7 Dec. 2019 | – |
| DN (Dunedin) | Silverpeaks | 45.746°S, 170.453°E | 760 | Multiple searches 2016 – 2020 | <i>Setascutum pallidum</i> Richards, 1972 |
| CO (Central Otago) | Rock and Pillar Range, Summit Rock | 45.425°S, 170.071°E | 1,450 | Multiple searches 2016 – 2020 | <i>Talitropsis chopardi</i> (Karny, 1937) |
| CO (Central Otago) | Rock and Pillar Range, Museum Rock | 45.461°S, 170.048°E | 1,380 | Multiple searches 2016 – 2020 | <i>Talitropsis chopardi</i> (Karny, 1937) |
| CO (Central Otago) | Old Man Range, Waikaia Bush Rd | 45.448°S, 169.228°E | 1,300 | Apr. 2019 | – |
| CO (Central Otago) | Old Man Range, near Duffers Saddle | 45.163°S, 169.077°E | 1,300 | 27 Nov. 2016, 7 May 2017 | <i>Setascutum pallidum</i> Richards, 1972 |
| CO / OL (Central Otago / Otago Lakes) | Crown Range Road, high point | 44.983°S, 168.940°E | 1,150 | 14 Nov. 2020 | <i>Setascutum pallidum</i> Richards, 1972 |
| CO (Central Otago) | Mt St Bathans | 44.718°S, 169.77°E | 1,650 | 8 Mar. 2019 | <i>Isoplectron</i> sp. |
| CO (Central Otago) | St Bathans Range, Hidden Lake | 44.646°S, 169.763°E | 1,600 | 9 Mar. 2019 | <i>Talitropsis chopardi</i> (Karny, 1937); <i>Isoplectron</i> sp. |
| CO (Central Otago) | St Marys Range, Mt Kyeburn | 44.954°S, 170.312°E | 1,200 | 16 Jan. 2017, 16 Apr. 2017 | <i>Setascutum pallidum</i> Richards, 1972; <i>Isoplectron</i> sp. |
| SC (South Canterbury) | Mt Peel | 43.863°S, 171.181°E | 1,400 | 19 Apr. 2019 | <i>Petrotettix serratus</i> Richards, 1972 |
| MC (Mid Canterbury) | Mt Somers | 43.607°S, 171.363°E | 1,300 | 12 Dec. 2020 | <i>Petrotettix serratus</i> Richards, 1972 |
| MC (Mid Canterbury) | Taylor Range, Round Hill Creek | 43.431°S, 171.297°E | 1,450 | 4 Dec. 2016 | <i>Petrotettix serratus</i> Richards, 1972 |
| MC (Mid Canterbury) | Craigieburn Range, Hamilton Peak | 43.113°S, 171.688°E | 1,900 | 11 Feb. 2017 | <i>Petrotettix serratus</i> Richards, 1972 |
| MC (Mid Canterbury) | Torlesse Range, The Gap | 43.253°S, 171.780°E | 1,600 | 20 Nov. 2016 | <i>Petrotettix serratus</i> Richards, 1972 |

Table S12. Continued. Alpine locations searched, where no *Pharmacus* were found

| Entomological Region | Locality | Coordinates | Elevation m a.s.l. | Date | Species of Rhabdophoridae found |
|--------------------------|--|------------------------|--------------------|------------------------------|--|
| NC (North Canterbury) | Organ Range, Mt Skedaddle | 42.680°S, 172.508°E | 1,650 | 20 Dec. 2016 | <i>Petrotettix serratus</i> Richards, 1972 |
| KA (Kaikōura) | Seaward Kaikōura Range, Kahutara Saddle | 42.322°S, 173.430°E | 1,300 | 4 Jan. 2017; 1 Apr. 2017 | <i>Petrotettix serratus</i> Richards, 1972; <i>Pleioplectron rodmorrisi</i> Hegg et al. 2019 |
| KA (Kaikōura) | Inland Kaikōura Range, Tapuae-o-Uenuku | 41.996°S, 173.663°E | 1,500 to 2,400 | 5 Apr. 2018 | <i>Petrotettix nigripes</i> Richards, 1972; <i>Pleioplectron rodmorrisi</i> Hegg et al. 2019 |
| MB (Marlborough) | Mt Altimarloch | 41.753°S, 173.776°E | 1,650 | 23 Oct. 2016, 6 Jan. 2017 | <i>Petrotettix nigripes</i> Richards, 1972; <i>Macropathus</i> sp. |
| MB (Marlborough) | Richmond Range, Mt Richmond | 41.474°S, 173.395°E | 1,700 | 21 Oct. 2018 | <i>Petrotettix nigripes</i> Richards, 1972 |
| BR (Brunner) | Paparoa Range, Croesus Knob | 42.290°S, 171.378°E | 1,200 | 5 Apr. 2019 | – |
| BR (Brunner) | Paparoa Range, Mt Faraday | 42.037°S, 171.575°E | 1,400 | 12-13 Feb. 2021 | – |
| BR (Brunner) | Paparoa Range, Buckland Peaks | 41.882°S, 171.640°E | 1,300 | 8 Dec. 2018 | – |
| NN (Nelson) | Mt Arthur, Kahurangi NP | 41.220°S, 172.682°E | 1,700 | 12 Jan. 2021 | <i>Macropathus filifer</i> Walker, 1869 |
| TK (Taranaki) | Taranaki, Fanthams Peak | 39.310°S, 174.067°E | 1,950 | 12 Mar. 2020 | – |
| TK (Taranaki) | Taranaki, Summit Crater | 39.298°S, 174.063°E | 2,450 | 13 Mar. 2020 | – |