

## Research article

urn:lsid:zoobank.org:pub:6DD16DFE-028A-4454-8DF7-64150836813E

## Newly discovered species of cheilostomatid Bryozoa from the Miocene of western Kachchh, Gujarat, India

Mohan A. SONAR <sup>1,\*</sup>, Ravi V. PAWAR <sup>2</sup> & Dnyaneshwar V. WAYAL <sup>3</sup><sup>1,2,3</sup>P.G. Department of Geology, Government Institute of Science, Nipat Niranjana Nagar, Caves Road, Aurangabad, Maharashtra 431004, India.\*Corresponding author: [drmohansonar398@gmail.com](mailto:drmohansonar398@gmail.com)<sup>2</sup>Email: [ravi4geology@gmail.com](mailto:ravi4geology@gmail.com)<sup>3</sup>Email: [wayaldnyaneshwar@gmail.com](mailto:wayaldnyaneshwar@gmail.com)<sup>1</sup>urn:lsid:zoobank.org:author:AE9F00AE-C936-4C1D-8C76-19F761D6ADE1<sup>2</sup>urn:lsid:zoobank.org:author:0843934D-033C-4199-A8BB-005BBB4E95AA<sup>3</sup>urn:lsid:zoobank.org:author:C93FC38C-7CB9-4511-BC3C-AF5D09D13A08

**Abstract.** Cheilostomatid bryozoans are present in large quantities in Miocene sediments of western Kachchh. A detailed investigation, as presented here, has yielded 11 species. Among them, two species – *Canda ukirensis* sp. nov. and *Antropora ramaniaensis* sp. nov. – are new to science. Five species had already been reported from the same region, while a genus and the remaining three species are left in open nomenclature pending an exhaustive study using better preserved material.

**Keywords.** Aquitanian, Burdigalian, Cenozoic, Neocheilostomina, new species.

Sonar M.A., Pawar R.V. & Wayal D.V. 2022. Newly discovered species of cheilostomatid Bryozoa from the Miocene of western Kachchh, Gujarat, India. *European Journal of Taxonomy* 821: 16–39. <https://doi.org/10.5852/ejt.2022.821.1795>

### Introduction

Cenozoic bryozoans from the Indian subcontinent were first reported by Tewari *et al.* (1958) and Tewari & Srivastava (1967). After a large gap, Guha & Gopikrishna (2004a, 2004b; 2005a, 2005b, 2005c, 2005d, 2005e, 2005f, 2007a, 2007b, 2007c, 2007d) and Guha (2013) described the plentiful and diverse bryozoan fauna from the Cenozoic rocks of western the Kachchh region, although the inventory of reported bryozoans from the region is still small. Therefore, we have felt a need to study more bryozoans from Kachchh, Gujarat, India. To do so, our research group has sampled the entire Miocene sequence from Kachchh region. As a result, Sonar & Gaikwad (2013a, 2013b, 2013c) and Sonar & Pawar (2016) have identified poricellariid, steginoporellid, calloporid as well as cyclostomatid bryozoans from the Cenozoic rocks exposed along the shelf zone adjoining the Mesozoic sequences of the western Kachchh (Fig. 1) (Sonar *et al.* 2022).

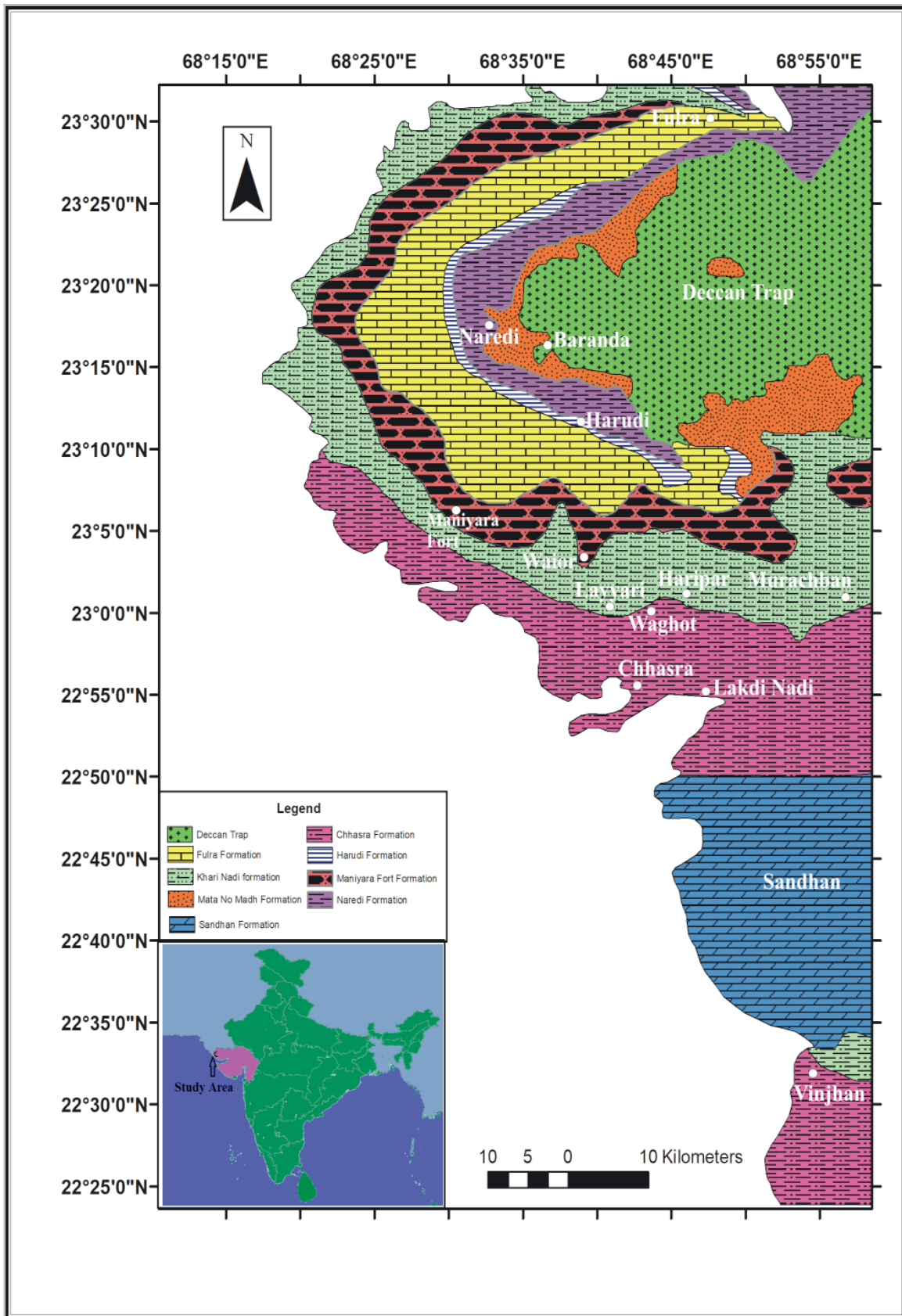


Fig. 1. Geological map of Kachchh (modified after Sonar *et al.* 2022).

In this study, we focus on the cheilostomatid Bryozoa from Kharinadi and Chhasra (early Miocene, Aquitanian–Burdigalian) Formations. We have identified 11 species belonging to the families Candidae d'Orbigny, 1851 (genera *Canda* Lamouroux, 1816 and *Licornia* van Beneden, 1850), Calescharidae Cook & Bock, 2001 (genus ?*Tretosina*), Cellariidae Fleming, 1828 (genus *Cellaria* Ellis & Solander, 1786), Antroporidae Vigneaux, 1949 (genus *Antropora* Norman, 1903), Steginoporellidae Hincks, 1884 (genus *Labioporella* Harmer, 1926), Microporidae Gray, 1848 (genus *Micropora* Gray, 1848), Cupuladriidae Lagaaij, 1952 (genus *Cupuladria* Canu & Bassler, 1919) and Skyloniidae Sandberg, 1963 (genus *Skylonia* Thomas, 1961).

## Material and methods

For this study, samples were collected from the Kachchh Basin during Jan.–Feb. 2012. The majority of the bryozoans were recovered using bulk sampling (ca 1 kg each) of crushed limestones, mudstones and siltstone, while some bryozoan colonies were found encrusting bivalve and gastropod shells. 250 g of each sample was soaked in 50% concentrated H<sub>2</sub>O<sub>2</sub> for 48–72 hours and then washed over a set of standard sieves with a mesh size of 1.68–0.25 mm. Bryozoan colonies were cleaned by soaking in a dilute H<sub>2</sub>O<sub>2</sub> solution and then picked from different fractions for identification. Autozoid orifices and avicularia were cleaned by using a thin metal needle. Colony surfaces were delicately scrubbed in a sodium nitrate solution and water using a 0.2 mm brush. The imaging was done using a Cambridge stereo scanning electron microscope (SEM S120) at the Sophisticated Analytical Instrument Facility (SAIF), Indian Institute of Technology Bombay, Mumbai. The measurements were taken with a 15 × ocular micrometer on a Nikon stereoscopic zoom microscope (see Winston & Heimberg 1986).

## Institutional abbreviation

GIS/B = Government Institute of Science, Aurangabad, Maharashtra, India

## Abbreviations of characters used in the paper

L<sub>Op</sub> = length of opesia  
L<sub>Or</sub> = length of orifice  
L<sub>Ov</sub> = length of ovicell  
L<sub>Z</sub> = length of autozoid  
N = number of measurements  
SD = standard deviation  
W<sub>Op</sub> = width of opesia  
W<sub>Or</sub> = width of orifice  
W<sub>Ov</sub> = width of ovicell  
W<sub>Z</sub> = width of autozoid

Systematic palaeontology follows the classification provided by the World Register of Marine Species (WoRMS 2022).

## Results

### *Taxonomy*

Order Cheilostomatida Busk, 1852  
Suborder Flustrina Smitt, 1868  
Superfamily Buguloidea Gray, 1848  
Family Candidae d'Orbigny, 1851  
Genus *Canda* Lamouroux, 1816

#### *Canda ukirensis* sp. nov.

urn:lsid:zoobank.org:act:1A669348-F122-4A0C-AB7C-185D0E1BA860

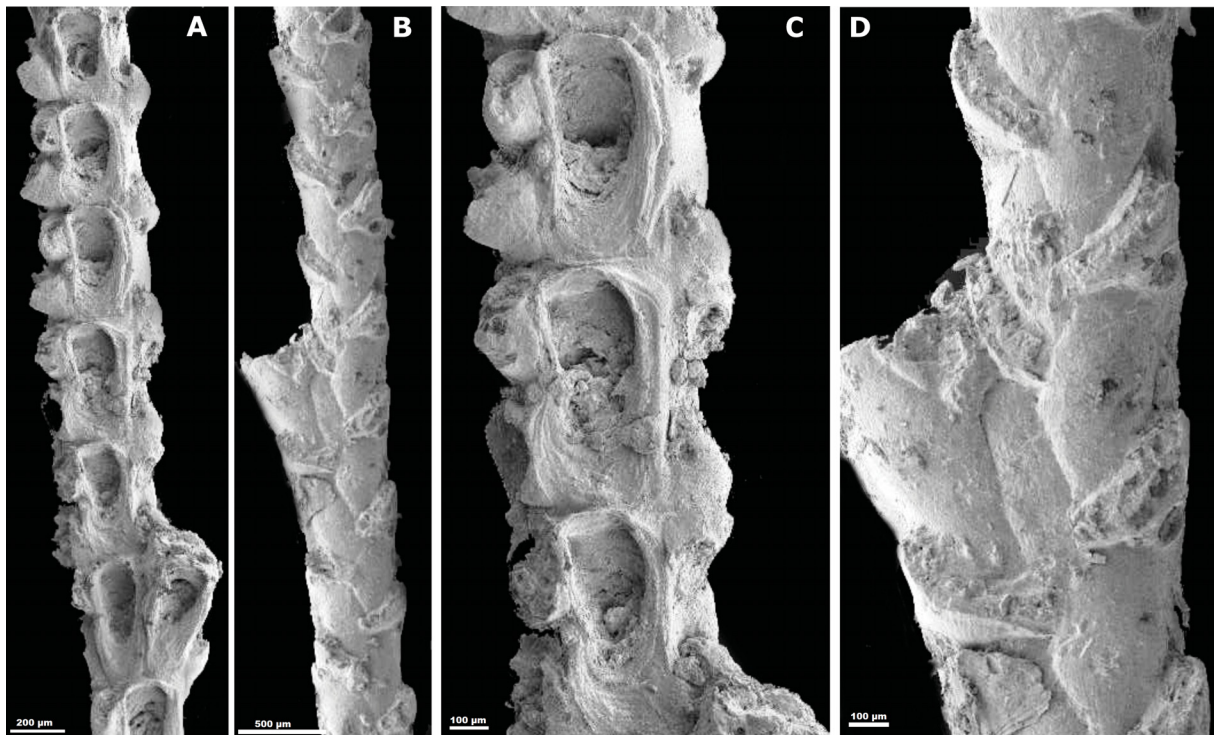
Fig. 2; Table 1

### *Diagnosis*

Biserial erect internodes with alternate arrangement, rectangular autozooids; autozooids immediately inclined to the axis, finely granular cryptocyst with large oval opesia; broad, sessile, laterally emplaced avicularia; vibracula with deep setal groove and broad radicular pore placed dorsally. Ooecium not seen.

### *Etymology*

The species is named after its type locality 'Ukir' between Waior and Charopadi in Kachchh.



**Fig. 2.** *Canda ukirensis* sp. nov., holotype (GIS/B 431). **A.** Frontal view of the colony showing different autozooids, avicularia and vibracula. **B.** Dorsal view of the colony showing vibracular pores. **C.** Enlargement of the colony showing autozooids. **D.** Close-up of dorsal view of the colony showing vibracula with setal grooves and vibracular pores.

**Table 1.** Measurements in mm of *Canda ukirensis* sp. nov., holotype (GIS/B 0431), Burdigalian, lower Miocene, Chhasra Formation, western Kachchh, Gujarat, India. Abbreviations: see Material and methods.

|     | Minimum | Maximum | Mean  | SD     | N  |
|-----|---------|---------|-------|--------|----|
| LZ  | 0.180   | 0.200   | 0.192 | ±0.002 | 25 |
| WZ  | 0.060   | 0.080   | 0.072 | ±0.005 | 25 |
| LOp | 0.120   | 0.130   | 0.126 | ±0.002 | 15 |
| WOp | 0.050   | 0.060   | 0.054 | ±0.002 | 15 |

## Material examined

### Holotype

INDIA • fossiliferous limestone of cliff section exposed 1.5 km southeast of Waghot Village in Waior-Charopadi stream; Burdigalian, lower Miocene, Chhasra Formation; 23°23'49" N, 68°41'35" E; Jan.–Feb. 2012; Sonar leg.; GIS/B 0431.

### Paratypes

INDIA • 7 specs; same collection data as for holotype; 23°25'55" N, 68°42'40" E; Jan.–Feb. 2012; Sonar leg.; GIS/B 0432 to 0438.

## Description

Colonies erect, biserial, with rectilinear or slightly curved, narrow branches, triangular in cross-section. Autozooids distinct, alternating in two rows on either side of median keel, rectangular, slightly asymmetrical, abrupt inclination from median keel, separated by shallow grooves, distal edge slightly raised (Fig. 2A). Gymnocyst absent. Cryptocyst slightly granular, asymmetrically developed, extended more distally on outer side (Fig. 2C, uppermost zooid). Large communication pores visible in distolateral corners, emplaced on broad immersed shelf of each autozooid. Opesia large, oval, tapering proximally. Scutum lacking. Avicularia placed laterally along central axis, sessile, broad and about half as long as zooid, each zooid producing single avicularium occupying its inner distal half, rostrum obliquely positioned with respect to colony surface and long axis (Fig. 2C). The dorsal side occupied by vibracula with long, curved, deep setal groove, oriented distolaterally; shallow crisscross median furrow corresponds to zooidal boundaries. Radicular pore very large (Fig. 2B, D). Ooecium not seen.

## Remarks

*Canda retiformis* (Pourtalès, 1867), the north pacific recent species has resemblance with *C. ukirensis* sp. nov. in broad sessile avicularia but differs in the depressed cryptocyst and presence of scutum. *Canda pecten* Thornely, 1907 (see Tilbrook 2006: 54, pl. 8c) differs from *C. ukirensis* sp. nov. in having triangular opesia and large frontal avicularia above branch bifurcation. Di Martino & Taylor, 2014 studied the Indonesian Cenozoic species *C. federiciae* and *C. giorgioi*, which differ from *C. ukirensis*: the former in the absence of avicularia and the latter in the absence of avicularia, raised distal autozooidal edges and egg-shaped opesia. The Recent species *Canda foliifera* (Harmer, 1926) from Taiwan has some resemblance in general morphology to the Kachchh species but it has a more extensive granular cryptocyst with a straight proximal edge (see Gluhak *et al.* 2007: 403, fig. 7a–d).

Genus *Licornia* van Beneden, 1850

?*Licornia* sp. 1

Fig. 3; Table 2

**Material examined**

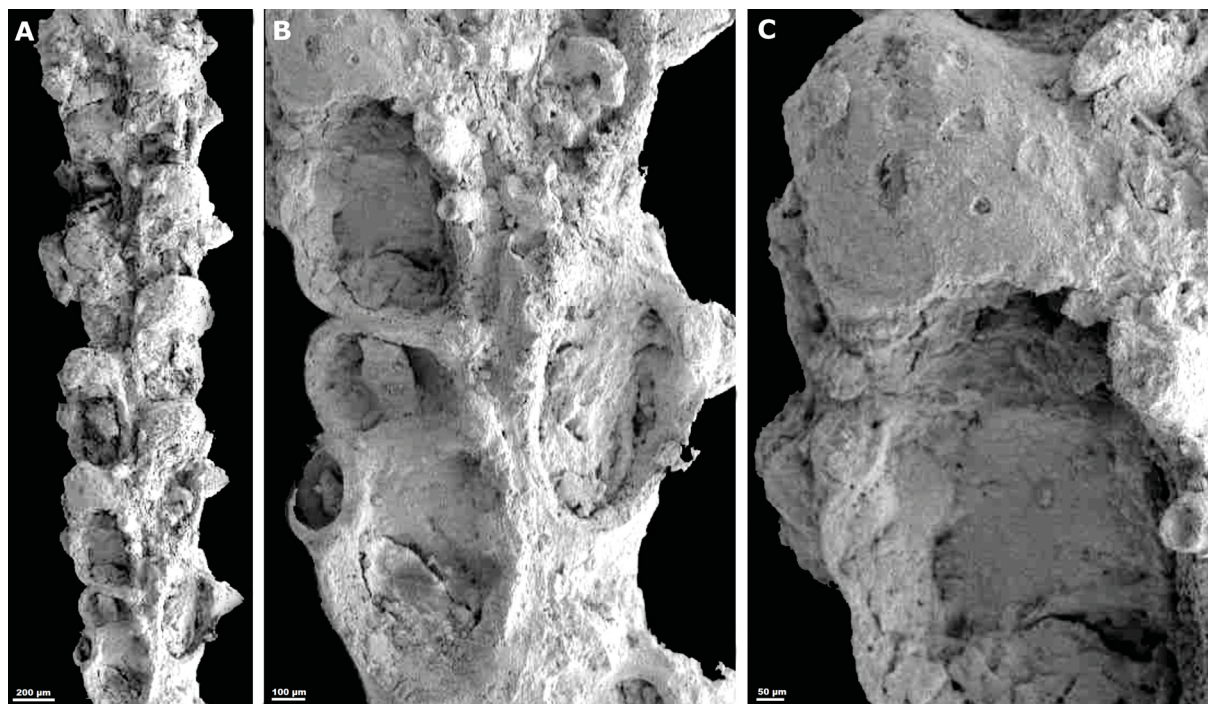
INDIA • fossiliferous limestone at cliff section of Lakdi Nadi near Tera Village; Burdigalian, lower Miocene, Chhasra Formation; 23°22'19" N, 68°58'10" E; Jan.–Feb. 2012; Sonar leg.; GIS/B 0439.

**Description**

Colony erect biserial, branching. Autozooids club-shaped, arranged in alternate longitudinal rows (Fig. 3A). Cryptocyst barely developed, when present descending into opesia. Gymnocyst extended for  $\frac{1}{3}$  of frontal surface, occupied by oecia of the proximal zooid if fertile (Fig. 3B). Opesia rounded to oval. Scutum not preserved. Distal oral spine bases stout, usually two internal, distal spine bases obscured by the ovicells (Fig. 3C). Lateral avicularia large, on outer distolateral corner of each autozooid, laterally directed, with acute rostrum, with somewhat raised tip. A frontal vibracula obliquely placed distolaterally with small rootlet foramen. Oecia broad, conspicuous, slightly tilted away from axis of branch, ectooecium smooth, perforated by 12–15 unequal sized pseudopores.

**Remarks**

A single, weathered specimen was available to study, which does not allow to confirm the presence or details of a scutum or oral spine bases, the presence of frontal avicularia or axial vibracula. Hence, the species is left in open nomenclature until better preserved material is available. The present species differs from the Recent Indo-Pacific species *Licornia diadema* (Busk, 1852) in the absence of frontal



**Fig. 3.** ?*Licornia* sp. 1 (GIS/B 0539). **A.** Frontal view of the colony autozooids, oecium and avicularia. **B.** Enlargement of the colony showing autozooids and oecium. **C.** Close-up of a single autozooid with oecium having the ectooecium perforated by unequal sized pores.

**Table 2.** Measurements in mm of ?*Licornia* sp. 1 (GIS/B 0439), Burdigalian, lower Miocene, Chhasra Formation, western Kachchh, Gujarat, India. Abbreviations: see Material and methods.

|     | Minimum | Maximum | Mean  | SD     | N  |
|-----|---------|---------|-------|--------|----|
| LZ  | 0.370   | 0.400   | 0.390 | ±0.005 | 15 |
| WZ  | 0.200   | 0.230   | 0.212 | ±0.006 | 15 |
| LOp | 0.160   | 0.200   | 0.178 | ±0.010 | 10 |
| WOp | 0.120   | 0.156   | 0.133 | ±0.006 | 10 |
| LOv | 0.110   | 0.160   | 0.134 | ±0.020 | 3  |
| WOv | 0.180   | 0.210   | 0.196 | ±0.012 | 3  |

avicularia, comparatively large lateral avicularia and the absence of a raised ooeial rim (see Vieira *et al.* 2013: 1914–1915, fig. 3e–f). The Recent south Pacific Australian species *Licornia prolata* Tilbrook & Vieira, 2012 differs in the presence of frontal avicularia, small lateral avicularia and the number of frontal pores on the ooeia.

Superfamily Calloporoidea Norman, 1903

Family Antroporidae Vigneaux, 1948

Genus *Antropora* Norman, 1903

*Antropora ramaniaensis* sp. nov.

urn:lsid:zoobank.org:act:24CED4FE-BFAA-4443-A52B-9A2A97D58DB7

Fig. 4; Table 3

### Diagnosis

Unilaminar encrusting colonies with rhomboidal to oval autozooids; opesia oval to subtriangular, extensive finely granular cryptocyst, small elongate avicularia placed on raised cystid randomly located in the narrow interzooeial space. Ovicells endozooeial, cap like.

### Etymology

The species is named after the locality ‘Ramania’ in Kachchh, Gujarat.

### Material examined

#### Holotype

INDIA • fossiliferous limestone of cliff section exposed 1.5 km southeast of Waghhot Village in Waior-Charopadi stream; Burdigalian, lower Miocene, Chhasra Formation; 23°25′49″ N, 68°42′35″ E; Jan.–Feb. 2012; Sonar leg.; GIS/B 0440.

#### Paratypes

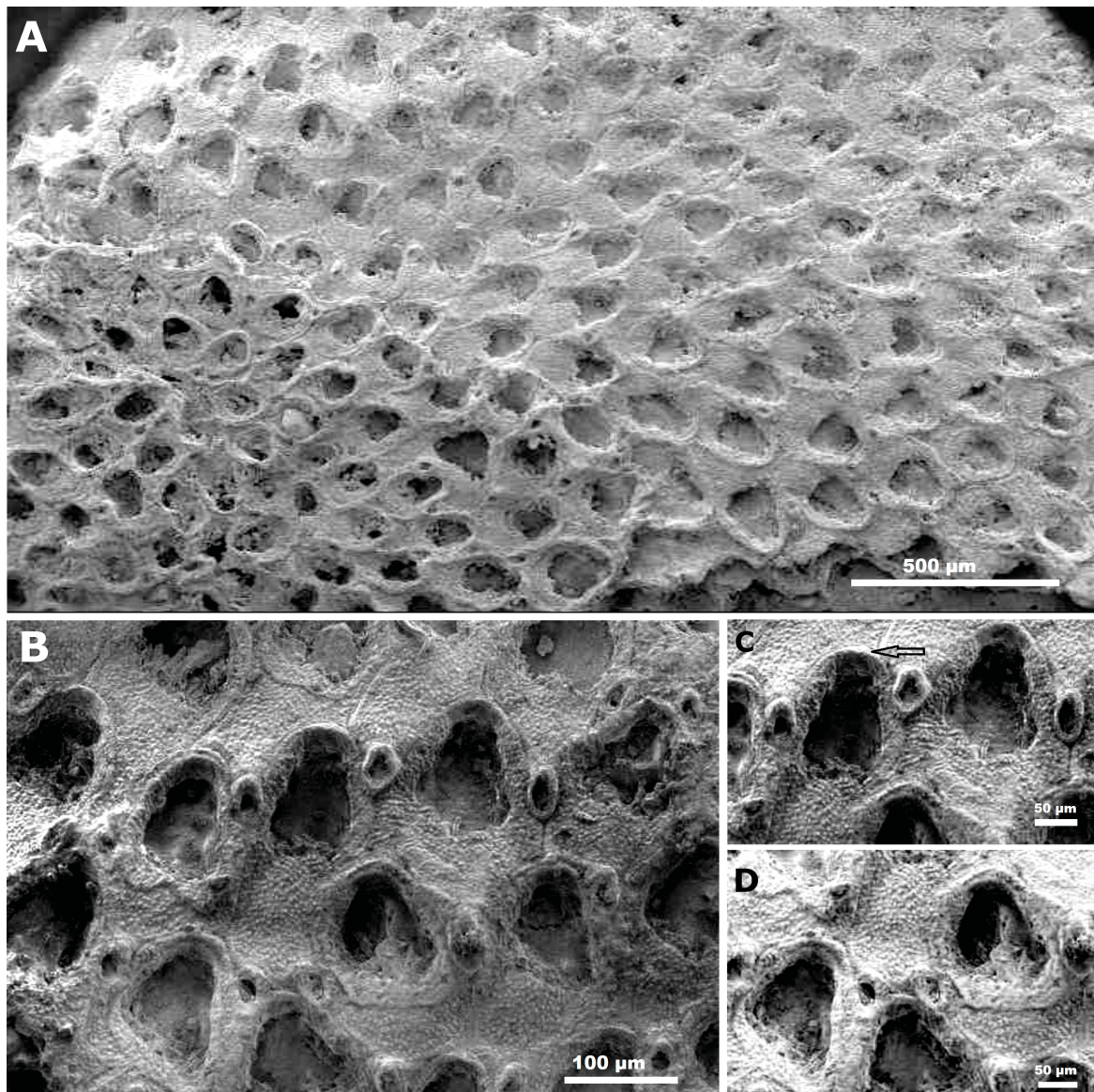
INDIA • 20 specs; same collection data as for holotype; GIS/B 0441 to 0460.

### Description

Colony unilaminar, encrusting. Autozooids oval to lozenge-shaped, separated by shallow, thin grooves (Fig. 4A). Gymnocyst vestigial; cryptocyst extensive, finely granular, gently sloping into opesia. Opesia roughly oval to bell shaped given the later constrictions, narrowing distally, occupying ½ of frontal area (Fig. 4B–C). Distal zooidal margins arched, raised. Small interzooeial avicularia elongate, with rounded

**Table 3.** Measurements in mm of *Antropora ramaniaensis* sp. nov., holotype (GIS/B 0440), Burdigalian, lower Miocene, Chhasra Formation, western Kachchh, Gujarat, India. Abbreviations: see Material and methods.

|     | Minimum | Maximum | Mean  | SD     | N  |
|-----|---------|---------|-------|--------|----|
| LZ  | 0.250   | 0.320   | 0.289 | ±0.022 | 10 |
| WZ  | 0.210   | 0.290   | 0.259 | ±0.015 | 10 |
| LOp | 0.025   | 0.079   | 0.046 | ±0.003 | 10 |
| WOp | 0.130   | 0.170   | 0.145 | ±0.008 | 10 |



**Fig. 4.** *Antropora ramaniaensis* sp. nov., holotype (GIS/B 0440). **A.** General view of the colony showing rhomboidal to oval autozooids. **B.** Enlargement of the colony showing autozooids with extensive cryptocyst and interzoocelial avicularia. **C.** Close-up of autozooids with cap like, endozoocelial ovicells (arrow) and interzoocelial avicularia. **D.** Close-up of autozooids with the endozoocelial ovicells.



rostrum, mostly distally directed, without crossbar, avicularium raised on small cystid seated randomly in narrow interzooidal space. Ovicells endozoecial, cap like, observed in fertile zooids (Fig. 4C–D).

### Remarks

The circum-tropical Recent species *Antropora minor* (Hincks, 1880) is similar to the Kachchh species in the shape of autozooids and opesia but differs in having a coarsely granular cryptocyst, the presence of small kenozooidal papillae at the proximal end of the autozoid and the occurrence of large vicarious avicularia (see Tilbrook 1998: 34, fig 2a–f). *Antropora typica* Canu & Bassler, 1928 has a superficial resemblance with the Kachchh species in its general morphology; however, the former species is characterized by smoothly calcified gymnocysts, interzoecial avicularia with an acutely triangular rostrum, and sporadic large vicarious avicularia (see Tilbrook 1998: 37, figs 1f, 3a). *Antropora leucocypha* Marcus, 1937 also resembles the new Kachchh species in the shape of the autozoid (see Winston 1982: 123, figs 36–37). However, the former has a beaded and crenulated cryptocyst and autozooids surrounded by numerous kenozooids. The Recent cosmopolitan warm-water species *A. granulifera* Hincks, 1880 differs in the crenulated, raised mural rim and shows a similarity in the shape of the autozooids. The Indonesian late Burdigalian species *A. cf. subvespertilio* (Canu & Bassler, 1929) differs in having a trifoliate opesia and differently shaped autozooids (see Di Martino & Taylor 2014: 43, pl. 15, fig. 2a–e). *Antropora gadhavi* Guha & Gopikrishna, 2005 differs from *A. ramaniaensis* sp. nov. in having a much less developed cryptocyst steeply sloping into the opesia, distal zooidal margins broad and subrectangular, indistinct autozooidal boundaries and oval avicularia with an acute rostrum.

*Antropora gadhavi* Guha & Gopikrishna, 2005  
Fig. 5; Table 4

*Antropora gadhavi* Guha & Gopikrishna, 2005d: 140, pl. I fig. 10, pl. II fig 1.

### Material examined

INDIA • 4 specs; yellowish limestone west of Haripar, Aquitanian, lower Miocene, Kharinadi Formation; 23° 21'12" N, 68°49'13" E; Sonar leg.; GIS/B 0461 to 0464 • 6 specs; yellow limestones of the Waghnot in Waior-Charopadi stream cliff section and Lakdi Nadi cliff section; Burdigalian, lower Miocene, Chhasra Formation; 23°22'25" N, 68°58'35" E; Sonar leg; GIS/B 0465 to 0470.

### Description

Colony unilaminar encrusting. Autozooids subtrigonal to subrectangular, indistinct zooidal boundaries (Fig. 5A). Gymnocyst indistinguishable; cryptocyst narrow, thickly calcified, descending into opesia. Opesia subrectangular to subtriangular in shape, elongate, occupying almost entire frontal area. Distal zooidal margins broad, subrectangular (Fig. 5B–C). Avicularia small, interzoecial, oval with acute rostrum, randomly placed at corners between autozooids, without crossbar (Fig. 5C–D). Ovicells not observed.

### Remarks

The present species agrees with all the essential characters of *Antropora gadhavi* Guha & Gopikrishna, 2005.

**Table 4.** Measurements in mm of *Antropora Gadhavii* Guha & Gopikrishna, 2005 (GIS/B 0461 to 0470), Aquitanian, lower Miocene, Kharinadi Formation, western Kachchh, Gujarat, India. Abbreviations: see Material and methods.

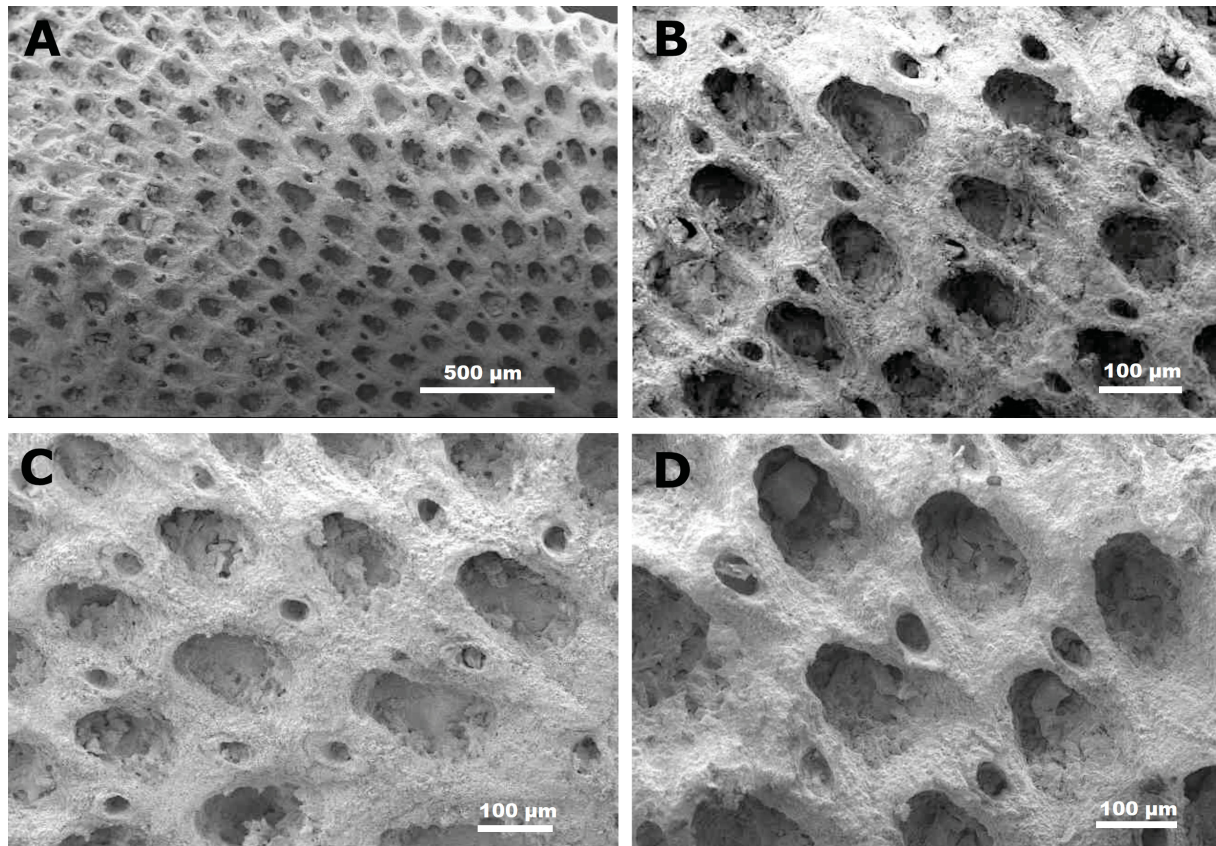
|     | Minimum | Maximum | Mean  | SD     | N  |
|-----|---------|---------|-------|--------|----|
| LZ  | 0.240   | 0.360   | 0.296 | ±0.022 | 10 |
| WZ  | 0.200   | 0.290   | 0.240 | ±0.013 | 10 |
| LOp | 0.081   | 0.100   | 0.092 | ±0.007 | 10 |
| WOp | 0.120   | 0.160   | 0.143 | ±0.004 | 10 |

Family Cupuladriidae Lagaaij, 1952  
Genus *Cupuladria* Canu & Bassler, 1919

*Cupuladria* sp.  
Fig. 6; Table 5

**Material examined**

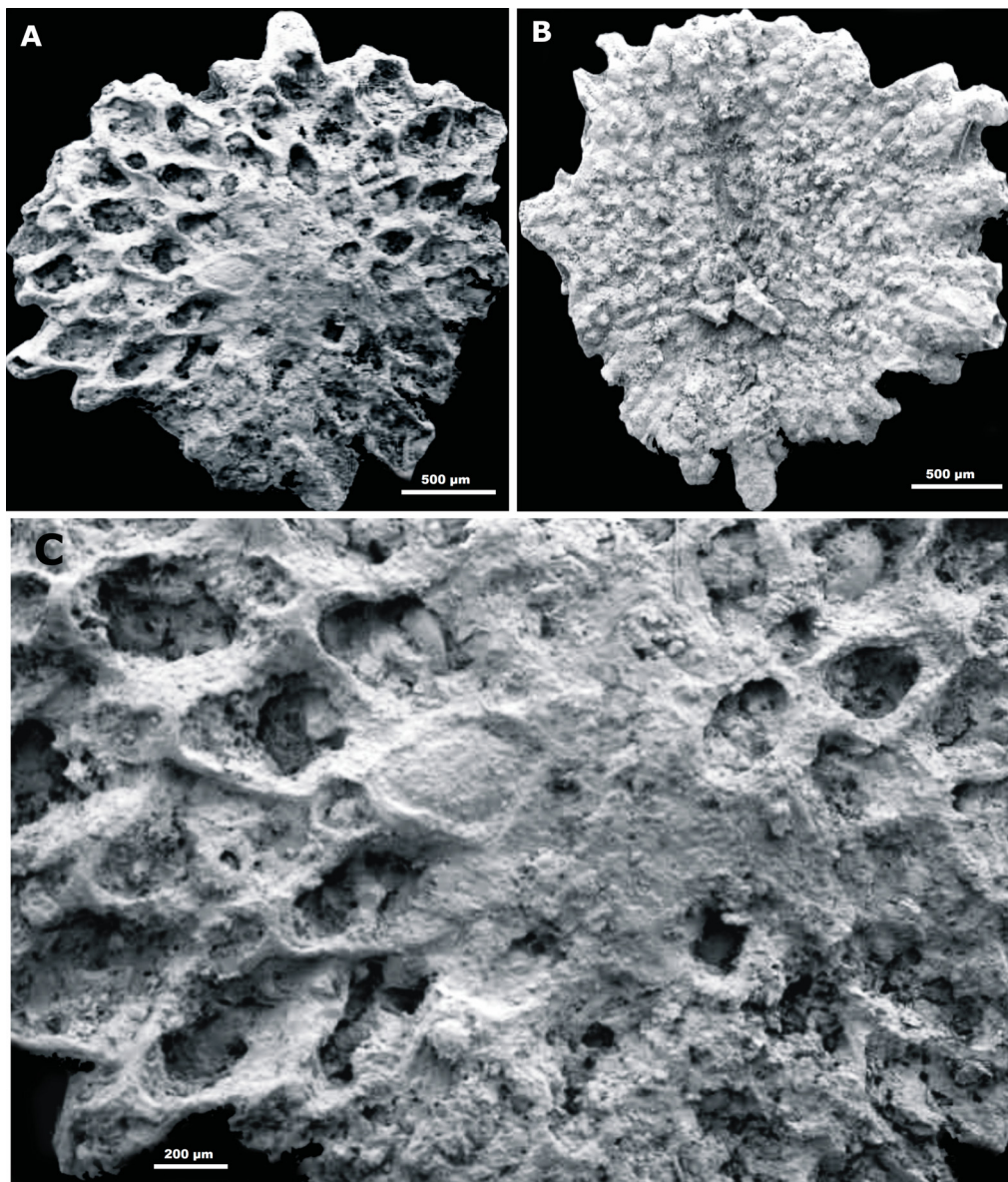
INDIA • 22 specs; South of Walaram Tirth Dham at Murachbann, Aquitanian, lower Miocene, Kharinadi Formation; 23°39'15" N, 68°58'02" E; Jan.–Feb. 2012; Sonar leg.; GIS/B 0471 to 0492 • 11 specs;



**Fig. 5.** *Antropora gadhavii* Guha & Gopikrishna, 2005 (GIS/B 0461). **A.** General view of the colony showing autozooids. **B–C.** Enlargement of the colony showing autozooid and interzoecial avicularia. **D.** Close-up of the colony showing autozooids with cryptocyst and interzoecial avicularia.

**Table 5.** Measurements in mm of *Cupuladria* sp. (GIS/B 0471 to 0503), Aquitanian, lower Miocene, Kharinadi Formation, western Kachchh, Gujarat, India. Abbreviations: see Material and methods.

|     | Minimum | Maximum | Mean  | SD     | N  |
|-----|---------|---------|-------|--------|----|
| LZ  | 0.140   | 0.160   | 0.152 | ±0.005 | 10 |
| WZ  | 0.100   | 0.110   | 0.104 | ±0.001 | 10 |
| LOp | 0.070   | 0.090   | 0.081 | ±0.004 | 10 |
| WOp | 0.050   | 0.070   | 0.060 | ±0.004 | 10 |



**Fig. 6.** *Cupuladria* sp. (GIS/B 0471). **A.** General view of the colony showing autozooids and vibracula on the distal periphery. **B.** Basal view of the colony showing more or less irregular inconspicuous tangential grooves with basal kenozooidal pores in the form tubercles. **C.** Close-up of the colony showing autozooids and vibracula.

yellowish siltstone Waghote cliff section and claystone section in Kankawati River south of Vinjhan Village, Burdigalian, lower Miocene, Chhasra Formation; 23°03'10" N, 69°00'23" E, Jan.–Feb. 2012; Sonar leg.; GIS/B 0493 to 0503.

### Description

Colony unilaminar, discoidal. Autozooids radially arranged, more or less hexagonal, radiating from near the center (Fig. 6A). Ancestrula placed centrally, filled with sediment. Opesia almost longitudinally ovoidal, bordered by a steeply descending, tuberculate cryptocyst. Vibraculum placed at distal periphery of each autozooid, broad, with lateral elevation (Fig. 6C). Basal surface concave, coarsely tuberculated (Fig. 6B).

### Remarks

The present Kachchh material is too poorly preserved to be meaningfully compared with other known species. Therefore, until we get better preserved material clearly showing the basal kenozooids and frontal surface, the species is left in open nomenclature.

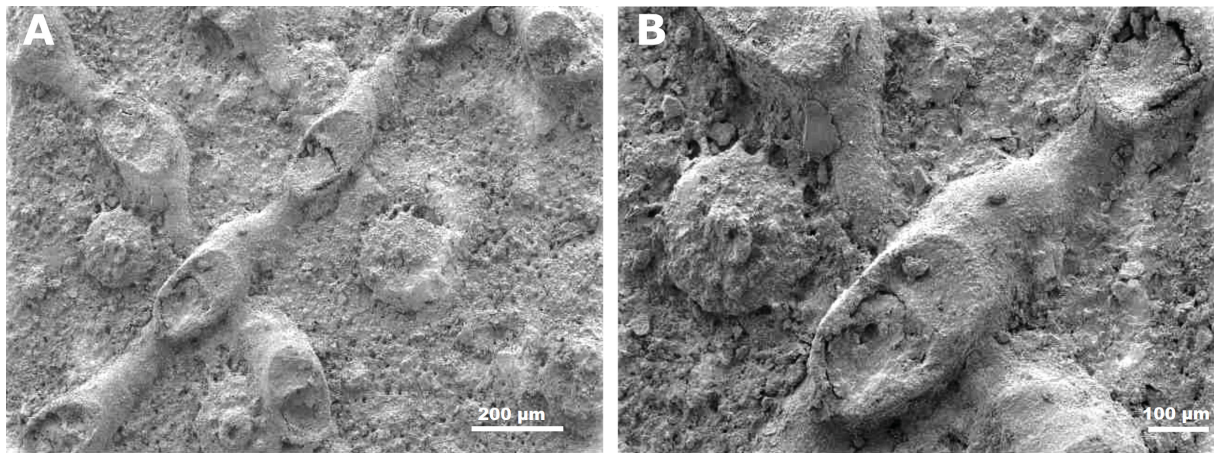
Family Cymuloporidae Winston & Vieira, 2013  
Genus *Crepis* Jullien, 1882

*Crepis gurjarensis* Guha & Gopikrishna, 2005  
Fig. 7; Table 6

*Crepis gurjarensis* Guha & Gopikrishna, 2005d: 146, pl. II fig. 13, pl. III fig. 1.

### Material examined

INDIA • 11 specs; yellow limestone of the section south of Walaram Tirth Dham near Murachbann, Aquitanian, lower Miocene, Kharinadi Formation; 23°39'15" N, 68°58'02" E; Jan.–Feb. 2012; Sonar leg.; GIS/B 0504 to 0514.



**Fig. 7.** *Crepis gurjarensis* Guha & Gopikrishna, 2005 (GIS/B 0504). **A.** General view of the colony encrusting an echinoid test showing uniserial chains with branching on both sides. **B.** Close-up of an autozooid showing oval opesia, cryptocyst and well-developed gymnocyst.

**Table 6.** Measurements in mm of *Crepis gurjarensis* Guha & Gopikrishna, 2005 (GIS/B 0504 to 0514), Aquitanian, lower Miocene, Kharinadi Formation, western Kachchh, Gujarat, India. Abbreviations: see Material and methods.

|     | Minimum | Maximum | Mean  | SD     | N  |
|-----|---------|---------|-------|--------|----|
| LZ  | 0.400   | 0.540   | 0.484 | ±0.044 | 10 |
| WZ  | 0.190   | 0.362   | 0.284 | ±0.054 | 10 |
| LOp | 0.130   | 0.200   | 0.161 | ±0.022 | 10 |
| WOp | 0.120   | 0.170   | 0.143 | ±0.015 | 10 |

### Description

Colony adnate, delicate, encrusting echinoid test. Autozooids arranged in uniserial chains with branching on both sides. New uniserial branches of autozooids starting from distolateral buds oriented at angle of 90° to the parent branch (Fig. 7A). Autozooids elongate, pyriform. Opesia semioval with concave proximal edge, occupying roughly 1/3 of the frontal area. Cryptocyst well developed, smooth, descending into opesia. Marginal rim smooth, indistinct. Lateral walls smooth, irregular in basal contact. Gymnocyst smooth, tapering proximally, shrinks in proximal cauda (Fig. 7B). Ancestrula and oecium not seen.

### Remarks

The present species agrees with all the essential characters of *Crepis gurjarensis* Guha & Gopikrishna, 2005.

Superfamily Cellarioidea Fleming, 1828  
Family Cellariidae Fleming, 1828  
Genus *Cellaria* Ellis & Solander, 1786

*Cellaria* sp.  
Fig. 8; Table 7

### Material examined

INDIA • 1 spec.; fossiliferous limestone of Lakdi Nadi near Tera Village, Burdigalian, lower Miocene, Chhasra Formation; 23°22'19" N, 68°58'10" E; Sonar leg.; Jan.–Feb. 2012; GIS/B 0515.

### Description

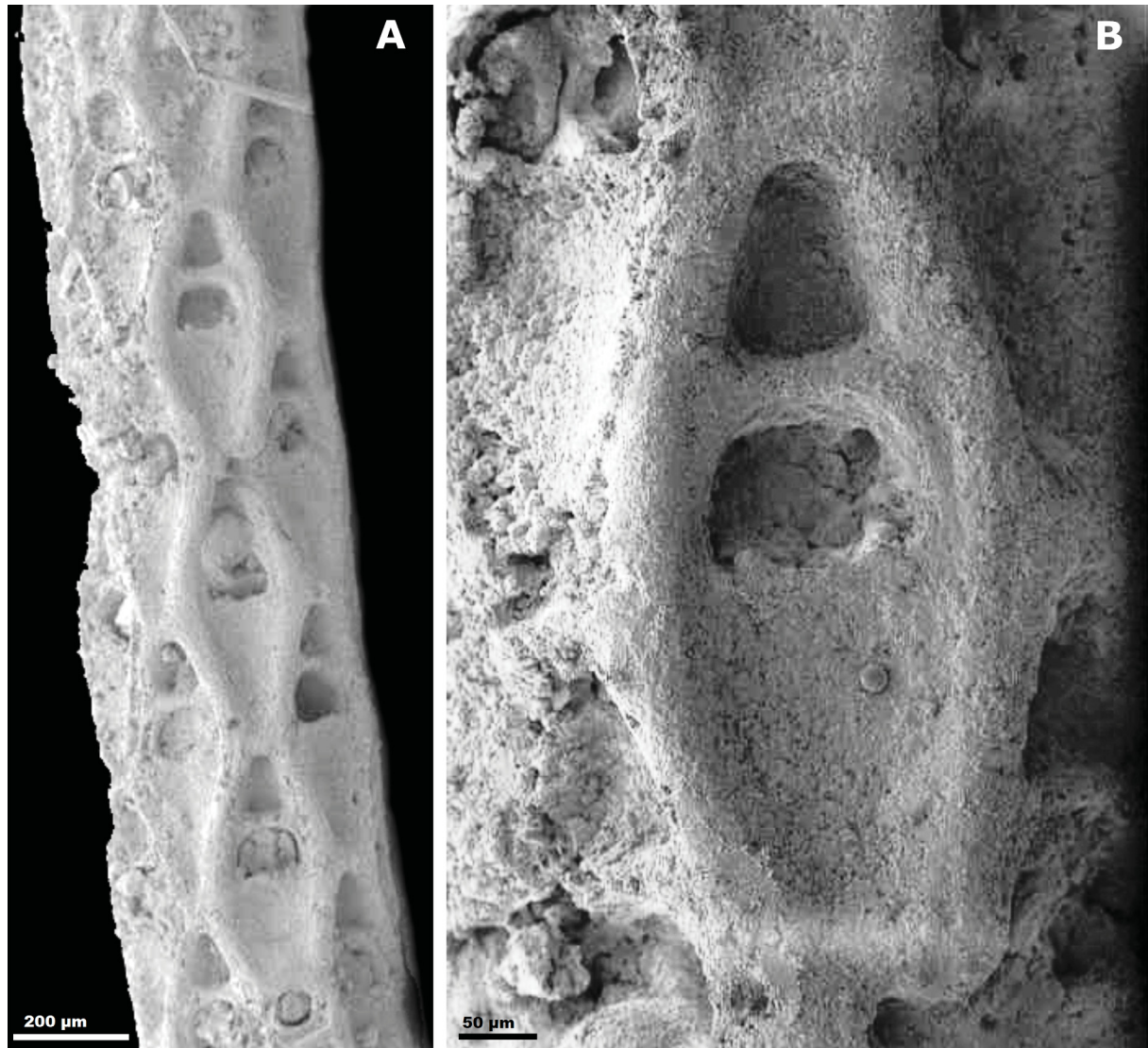
Internode cylindrical, slender, straight, or slightly curved. Autozooids diamond shaped, longer than wide, arranged in 5–6 alternating rows, distinctly separated by raised margins (Fig. 8A). Orifice semicircular, proximal lip straight, laterally flanked by pair of robust denticles. Frontal cryptocyst depressed, smooth, surrounded by elongate cryptocystal rim converging on both sides, becoming acute proximally or running parallel (Fig. 8B). Avicularia not observed. Ovicell endozooidal, placed at distal extremities of maternal zooids.

### Remarks

A single internode is available in the material which lacks avicularia and is therefore difficult to assign to a species, so it is left in open nomenclature until better preserved specimens are found.

**Table 7.** Measurements in mm of *Cellaria* sp. (GIS/B 0515), Burdigalian, lower Miocene, Chhasra Formation, western Kachchh, Gujarat, India. Abbreviations: see Material and methods.

|     | Minimum | Maximum | Mean  | SD     | N  |
|-----|---------|---------|-------|--------|----|
| LZ  | 0.223   | 0.241   | 0.233 | ±0.007 | 10 |
| WZ  | 0.090   | 0.109   | 0.102 | ±0.006 | 10 |
| LOr | 0.043   | 0.051   | 0.048 | ±0.002 | 05 |
| WOr | 0.020   | 0.032   | 0.028 | ±0.003 | 05 |



**Fig. 8.** *Cellaria* sp. (GIS/B 0515). **A.** General view of the colony showing hexagonal autozooids. **B.** Close-up of a single autozooid showing semicircular orifice with a pair of strong denticles, depressed proximal cryptocyst and distally placed oocyst cavity.

Superfamily Microporoidea Gray, 1848  
Family Microporidae Gray, 1848  
Genus *Micropora* Gray, 1848

*Micropora vredenburgi* Guha & Gopikrishna, 2005  
Fig. 9; Table 8

*Micropora vredenburgi* Guha & Gopikrishna, 2005d: 147, pl. III figs 2–3.

### Material examined

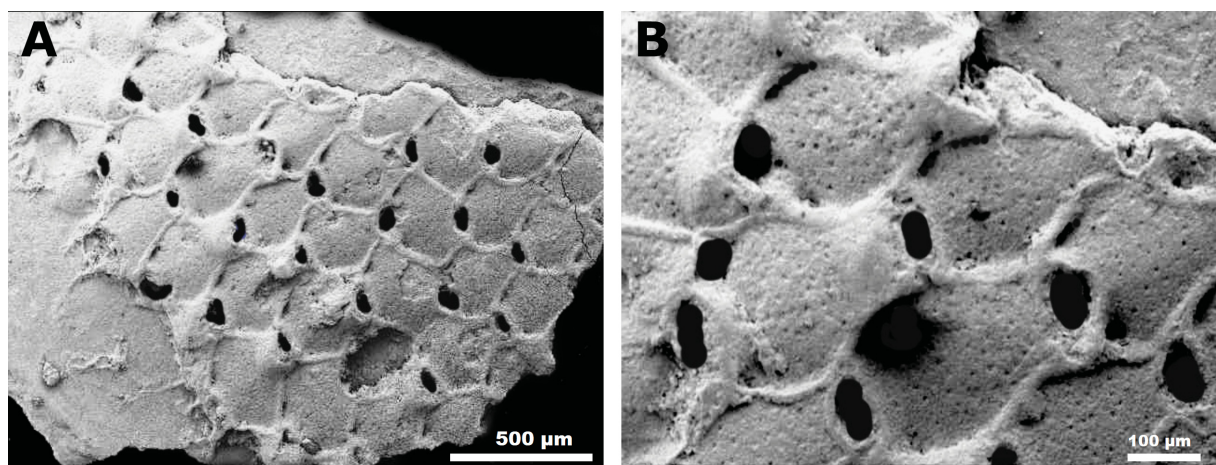
INDIA • 6 specs; yellowish limestone at cliff section of Waior-Charopadi stream near Waghote, Burdigalian, lower Miocene, Chhasra Formation; 23°25'55" N, 68°42'40" E; Jan.–Feb. 2012; Pawar leg.; GIS/B 0516 to 0521.

### Description

Colony encrusting, unilaminar. Autozoecia vase shaped or subhexagonal, arranged quincuncially (Fig. 9A). Cryptocyst extensive, flat, surface coarsely granular and with fine pseudopores, slightly bulging in middle, sinking distally and near opesiules, bordered by thick, raised mural rim. Opesiules small, slit like, placed at proximolateral corners of orifice near lateral margins. Orifice semielliptical, wider than long, arched distally, proximal edge concave. Ooecia small, semi-immersed, smooth, with semicircular frontal surface (Fig. 9B). Avicularia not observed.

### Remarks

All the essential characters agree with *Micropora vredenburgi* Guha & Gopikrishna, 2005. However, the interzoecial avicularia observed by Guha & Gopikrishna (2005) were not noticed in the present specimens.



**Fig. 9.** *Micropora vredenburgi* Guha & Gopikrishna, 2005 (GIS/B 0516). **A.** General view of the colony showing subhexagonal autozooid. **B.** Close-up of an autozooids showing orifices opesia, opesiules, thick mural rims and ooecia.

**Table 8.** Measurements in mm of *Micropora vredenburgi* Guha & Gopikrishna, 2005 (GIS/B 0516 to 0521), Burdigalian, lower Miocene, Chhasra Formation, western Kachchh, Gujarat, India. Abbreviations: see Material and methods.

|     | Minimum | Maximum | Mean  | SD     | N  |
|-----|---------|---------|-------|--------|----|
| LZ  | 0.340   | 0.420   | 0.389 | ±0.034 | 20 |
| WZ  | 0.292   | 0.350   | 0.317 | ±0.020 | 20 |
| LOr | 0.062   | 0.085   | 0.073 | ±0.007 | 10 |
| WOr | 0.082   | 0.106   | 0.096 | ±0.008 | 10 |

## Family Calescharidae Cook &amp; Bock, 2001

*?Tretosina* gen. et sp. indet.

Fig. 10; Table 9

**Material examined**

INDIA • 11 specs; yellow limestone of the south of Walaram Tirth Dham near Murachbann, Aquitanian, lower Miocene, Kharinadi Formation; 23°39'15" N, 68°58'02" E; Jan.–Feb. 2012; Pawar leg.; GIS/B 0522 to 0532.

**Description**

Colony erect with six zooidal series. Zooids hexagonal, arranged quincuncially in alternating longitudinal rows, bordered by thin raised, smooth mural rim (Fig. 10A). Opesia oval, less than ½ length of the zooid. Cryptocyst tuberculated, descending into the opesia narrowing proximally. Distal arch smooth, thin and raised (Fig. 10B). Spines, avicularia and oocia not observed.

**Remarks**

In these Kachchh specimens, the median cryptocystal process and oecium typical of *Tretosina* were not observed making even genus-level attribution difficult. So, the genus is left in open nomenclature until better preserved material is available.

Suborder Thalamoporellina Ostrovsky, 2013  
 Superfamily Thalamoporelloidea Levinsen, 1902  
 Family Steginoporellidae Hincks, 1884  
 Genus *Labioporella* Harmer, 1926

*Labioporella hariparensis* Guha & Gopikrishna, 2007

Fig. 11; Table 10

*Labioporella hariparensis* Guha & Gopikrishna 2007b: 805, pl. I figs 4–6.**Material examined**

INDIA • 16 specs; argillaceous limestone in Waior-Charopadi stream near Waghote, Burdigalian, lower Miocene, Chhasra Formation; 23°25'55" N, 68°42'40" E; Jan.–Feb. 2012; Pawar leg.; GIS/B 0533 to 0548.

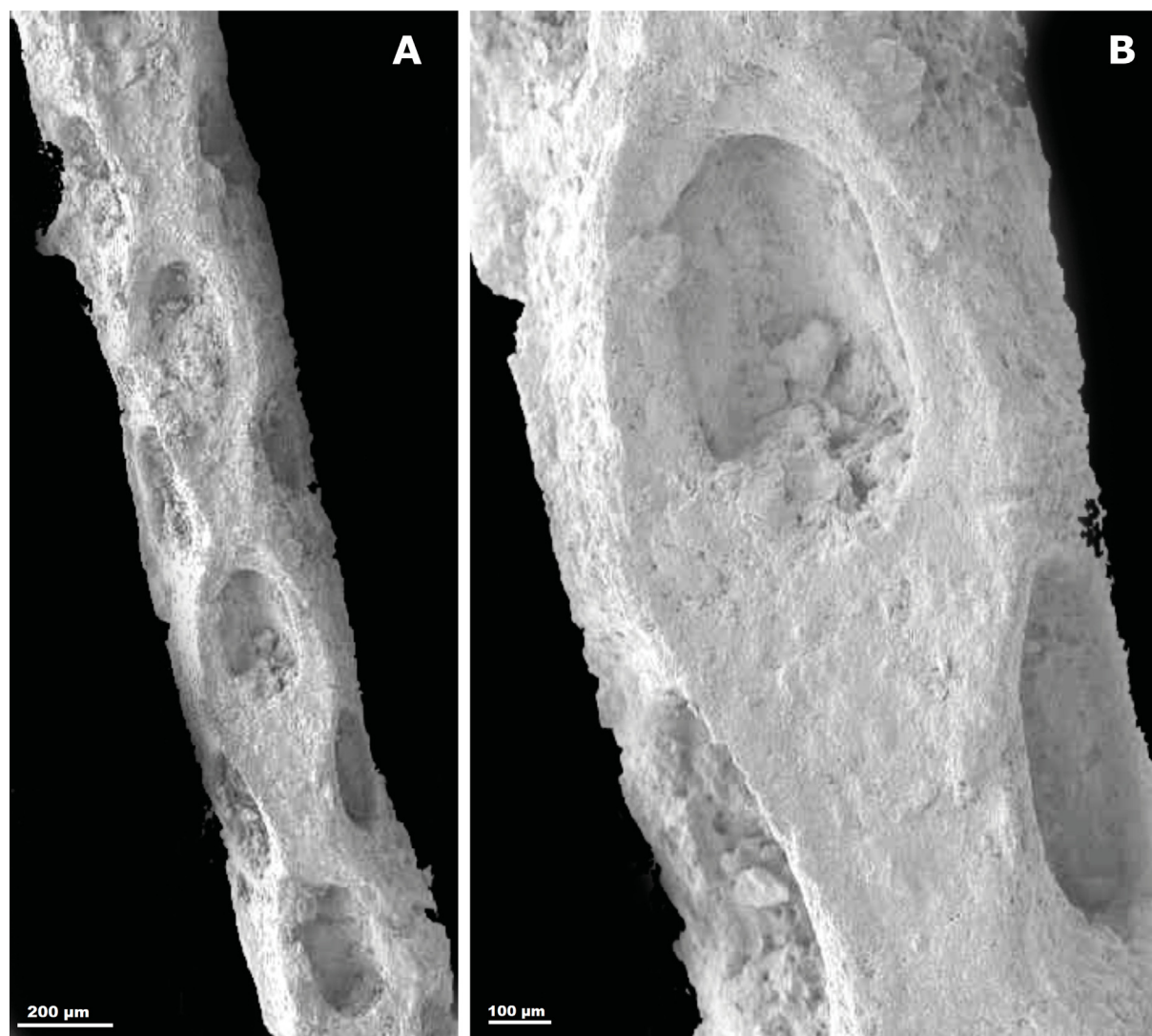


**Table 9.** Measurements in mm of ?*Tretosina* gen. et sp. indet. (GIS/B 0522 to 0532), Aquitanian, lower Miocene, Kharinadi Formation, western Kachchh, Gujarat, India. Abbreviations: see Material and methods.

|     | Minimum | Maximum | Mean  | SD     | N  |
|-----|---------|---------|-------|--------|----|
| LZ  | 0.122   | 0.144   | 0.135 | ±0.004 | 10 |
| WZ  | 0.050   | 0.060   | 0.056 | ±0.002 | 10 |
| LOp | 0.040   | 0.055   | 0.048 | ±0.004 | 10 |
| WOp | 0.033   | 0.041   | 0.036 | ±0.002 | 10 |

### Description

Colony unilaminar, encrusting. Autozooids hexagonal, rounded distally (Fig. 11A). Lateral margins

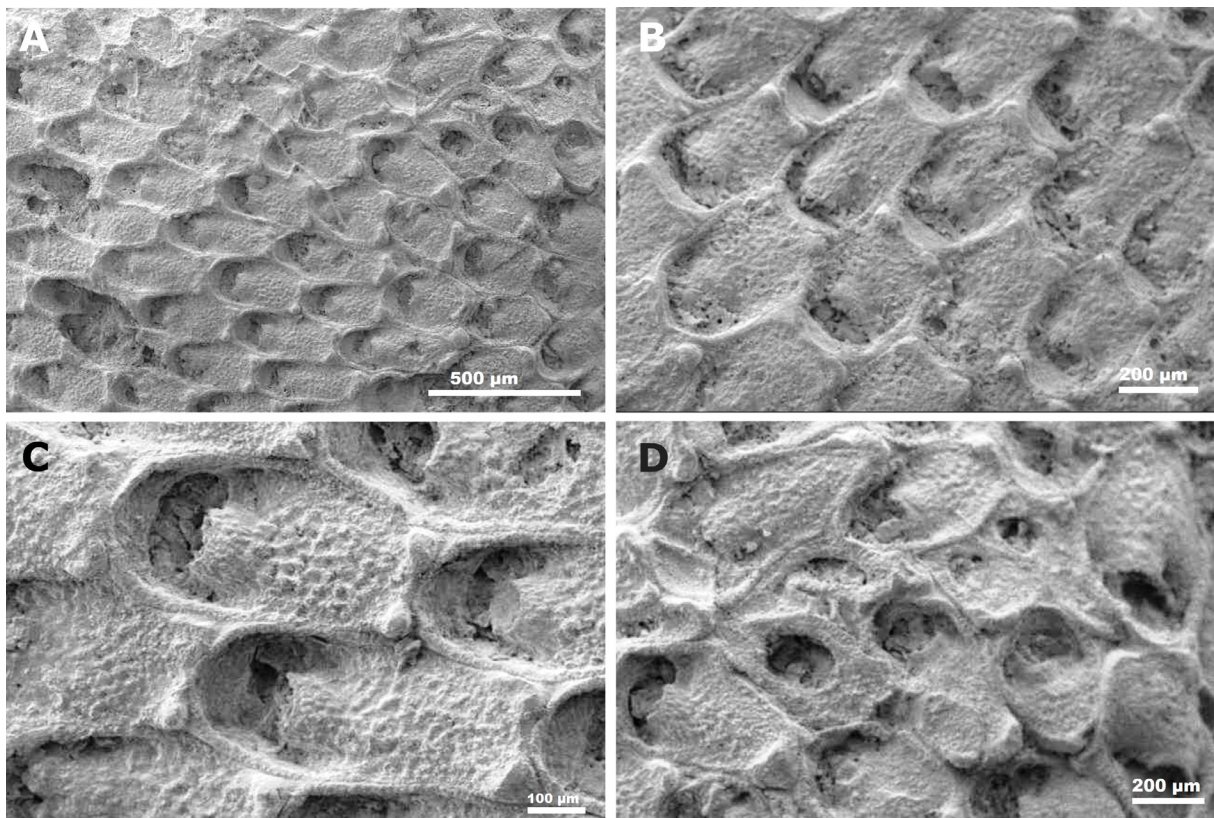


**Fig. 10.** ?*Tretosina* gen. et sp. indet. (GIS/B 0522). **A.** General view of the colony showing hexagonal autozooid arranged in longitudinal rows. **B.** Close-up of a single autozooid showing oval opesia and tuberculated cryptocysts.

**Table 10.** Measurements in mm of *Labioporella hariparensis* Guha & Gopikrishna, 2007, Burdigalian, lower Miocene, Chhasra Formation, western Kachchh, Gujarat, India (GIS/B 0533 to 0548). Abbreviations: see Material and methods.

|     | Minimum | Maximum | Mean  | SD     | N  |
|-----|---------|---------|-------|--------|----|
| LZ  | 0.360   | 0.570   | 0.472 | ±0.041 | 20 |
| WZ  | 0.220   | 0.320   | 0.273 | ±0.015 | 20 |
| LOr | 0.110   | 0.190   | 0.155 | ±0.019 | 10 |
| WOr | 0.140   | 0.220   | 0.178 | ±0.020 | 10 |

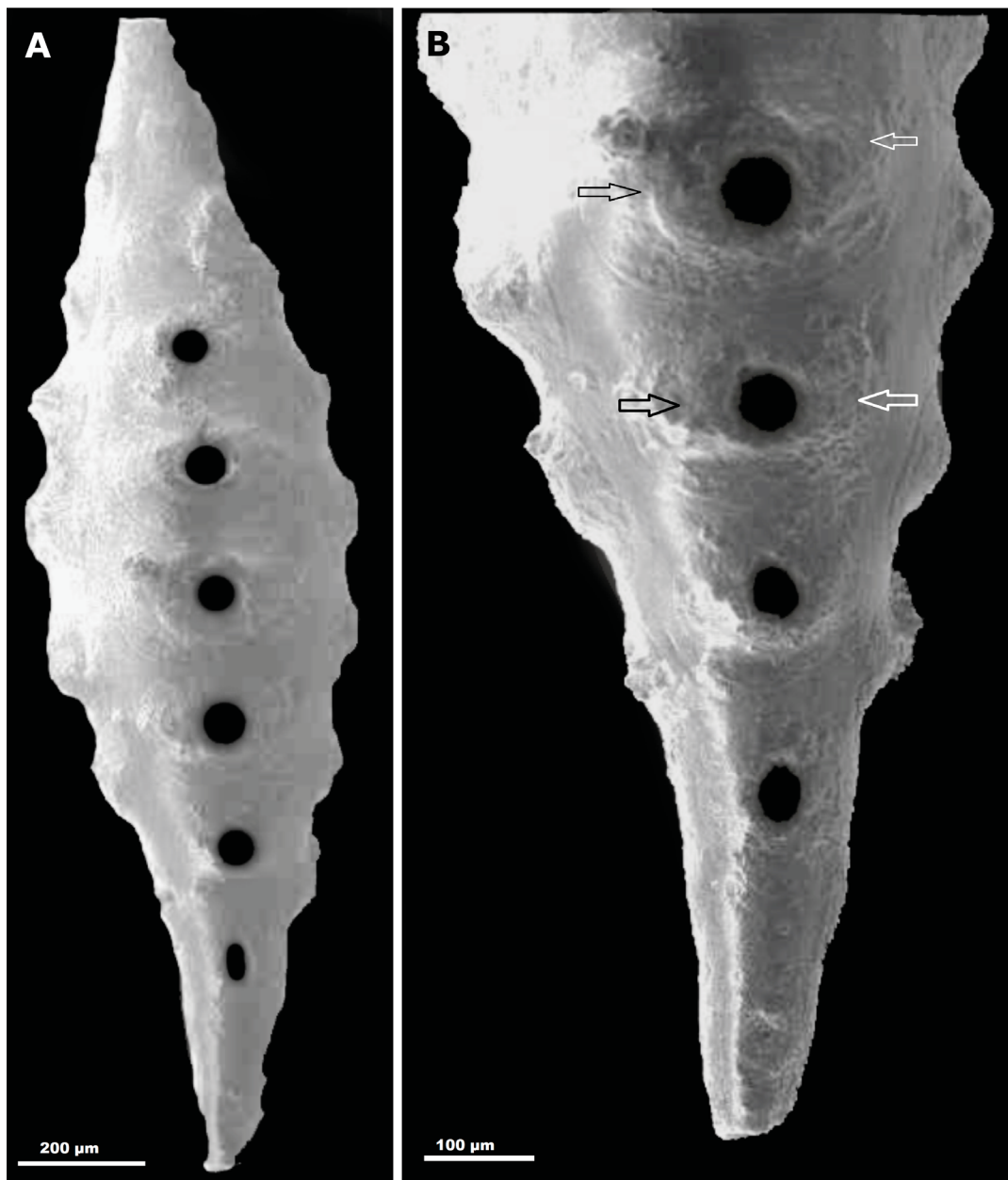
beaded, thickly calcified, raised in relation to autozooidal frontal shield; autozooidal boundaries also marked by thin grooves. Cryptocyst coarsely granular, occupying nearly  $\frac{2}{3}$  of autozooidal frontal surface and descending smoothly into the orifice; polypide tube slender, opening into the orifice with medium-sized lateral indentations (Fig. 11B). Two conspicuous tubercles at distolateral corners of each autozooid (Fig. 11C). Opesia rounded quadrangular, wider than long with smooth curved distally. Avicularia small, interzoocial, oval; cryptocyst narrow; opesia large, oval with broader proximal; rostrum thick, prominent, next distal zooid arise from rostral margin of avicularia (Fig. 11D).



**Fig. 11.** *Labioporella hariparensis* Guha & Gopikrishna, 2007 (GIS/B 0533). **A.** General view of the colony showing autozooids. **B.** Enlargement of an autozooid showing cryptocyst and polypide tube. **C.** Close-up of the colony showing autozooid with proximal tubercles. **D.** Enlargement of the colony showing ancestrula and interzoocial avicularia.

### Remarks

The present species shows a superficial resemblance to *Labioporella filiparietis* Canu & Bassler, 1935 in the shape of the autozooids and the polypide tube but differs in having a granular cryptocyst, and the presence of avicularia and tubercles. The Aquitanian species *Labioporella bassleri* Guha & Gopikrishna 2007 from Kharinadi Formation differs in not having avicularia or tubercles. The Gran Canarian Pliocene *Labioporella* sp. Sendino & Taylor, 2014 differs from the present species in the absence of avicularia, a stout polypide tube and the distal margin of the opesia is higher than wide.



**Fig. 12.** *Skylonia sandbergi* Sandberg, 1962 (GIS/B 0549). **A.** General view of the colony showing autozooids and well-developed knobs bordering the aperture. **B.** Close-up of the colony showing autozooids and well-developed knobs (arrows).

**Table 11.** Measurements in mm of *Skylonia sandbergi* Sandberg, 1962 (GIS/B 0549 to 0569), Burdigalian, lower Miocene, Chhasra Formation, western Kachchh, Gujarat, India. Abbreviations: see Material and methods.

|     | Minimum | Maximum | Mean  | SD     | N  |
|-----|---------|---------|-------|--------|----|
| LZ  | 0.070   | 0.090   | 0.082 | ±0.002 | 10 |
| WZ  | 0.050   | 0.065   | 0.056 | ±0.002 | 10 |
| LOr | 0.021   | 0.033   | 0.026 | ±0.001 | 05 |
| WOr | 0.040   | 0.051   | 0.045 | ±0.002 | 05 |

Family Skytoniidae Sandberg, 1963

Genus *Skylonia* Thomas, 1961*Skylonia sandbergi* Sandberg, 1962

Fig. 12; Table 11

**Material examined**

INDIA • 21 specs; Yellow limestone of Waghote section, Burdigalian, lower Miocene, Chhasra Formation; 23°25'35" N, 68°42'20" E; Jan.–Feb. 2012; Pawar leg.; GIS/B 0549 to 0569.

**Description**

Colony spindle-shaped having six to nine zooids, more or less rectangular in each longitudinal row (Fig. 12A). Length and width of a few complete spindles vary between 0.8 mm and 0.3 mm, respectively. Spindles have maximum diameter at or just below central point. Width/length ratio of median zooids varies between 0.3 mm to 0.8 mm. Width of apertures ranges from 0.05 mm to 0.07 mm. Apertures above greatest diameter of spindles open obliquely upwards. End of frontal cover depressed, forming shallow groove. Usually very well-developed knobs bordering aperture (Fig. 12B).

**Remarks**

The present Kachchh species differs from *Skylonia mirabilis* Thomas, 1961 in the shape of the autozooids and orifice (see Keij 1973: 224, pl. 3 figs 10–13). Compared to the present species, *S. dohmi* (Sandberg, 1962) and *S. thomasi* Keij, 1973 have fewer autozooids in each longitudinal row, knobs adjoining the orifice, and a raised border around the orifice. *Skylonia malabarica* Sonar & Badve, 2019 differs in the number of zooids and the nature of the knobs around the orifice.

**Discussion**

In the Kharinadi Formation, erect flexible articulated branching cheilostomes are abundant in the Laiyari, Haripar and Murachbann sections, indicating moderate to high energy level and moderate to high sedimentation rate (Amini *et al.* 2004: 13). Free lunulitiform (*Cupuladria* sp.) and erect rigid delicate cheilostomes (?*Tretosina* sp.) are more abundant in the Murachbann and Lakdi River sections. Cupuladriids indicate a stable sea floor and a very low energy environment (McKinney & Jackson 1989); Zágorský *et al.* 2012: 215). However, erect rigid delicate forms indicate decreasing water energy and low a sedimentation rate (Amini *et al.* 2004: 13). These zoarial forms are generally cemented to hard substrates at depths of 20–80 m (Moissette *et al.* 2007). Unilaminar encrusting forms viz. *Antropora gadhavi* were found at Haripar in large quantities, where they have *Ostrea*, echinoids and *Turritella* as a hard substrate for their growth. Foraminifera like *Miogyopsina*, *Nephrolepidina*, *Austotrellina* and *Spaerogypsina*, *Turritella*, *Ostrea* as well as echinoids – plant fossils are the associated fauna with the

bryozoans indicating that the deposition in Kharinadi Formation took place in a tidal flat, littoral, to shallow inner-shelf environment with a slowly transgressive sea over a stable shelf (Biswas 1992).

In the Chhasra Formation, four localities show an abundance of bryozoans viz. Chhasra, Waghot, Lakdi River and Vinjhan. Erect flexible articulated branching cheilostomes such as *Canda ukirensis* sp. nov., ?*Licornia* sp. 1, *Cellaria* sp. and *Skylonia sandbergi* colonies are most abundant here. These shallow water colonies attached to indurated sediments survive in moderate to high energy waters and occur in littoral environments (Keij 1972; Moissette *et al.* 2007). Free-living lunulitiform viz. *Cupuladria* sp. cheilostomes are also present at Vinjhan. These zoarial growth forms are observed at depths of 20–70 m mainly, but not exclusively on continental shelves (McKinney & Jackson 1989). Unilaminar encrusting growth forms are the next most abundant growth form in the Chhasra Formation. These morphotypes are represented by *Antropora ramaniaensis* sp. nov., *A. gadhavi*, *Micropora vredenbergi* and *Labioporella hariparensis*, which need a hard substrate for encrustation and typically occur at shallow depths with moderate to high water energy and fairly slow sedimentation rate (Moissette *et al.* 2007). The associated fauna includes gastropods like *Turritella*, *Physa*, *Conus*, and others; bivalves like *Ostrea*, *Pecten*, *Arca*, *Venus*, etc. echinoids like *Cidaris*, *Clypeaster* and *Scutella* on which bryozoan encrustations occur. Furthermore, larger foraminifers, especially *Miogypsina*, also show bryozoan encrustations. They occur in both lagoon and shallow subtidal environments. This fauna indicates deposition in the sublittoral environment during maximum sea-level. Foraminifers show a fluctuating marginal marine to a shallow inner-shelf environment of deposition (Biswas 1992).

## Acknowledgments

The authors are thankful to P.D. Taylor (NHM, London) for providing literature. We are thankful to the staff of the Sophisticated Analytical Instrument Facility (SAIF), Indian Institute of Technology Bombay, Mumbai for SEM photography. Azhar Shaikh (Department of Geology, University of Johannesburg, C1 Lab 446, Auckland Park 2006, Johannesburg, South Africa) is also gratefully acknowledged for the improvement of the language in the manuscript. Financial assistance for this work was received from the Department of Science and Technology (DST), Government of India, New Delhi (SERC Project No. SR/54/ES-334/2008). We are also grateful to anonymous reviewers, for their comments on an early version of the manuscript that helped us to improve the work.

## References

- Amini Z.Z., Adabi M.H., Burrett C.F. & Quilty P.G. 2004. Bryozoan distribution and growth form associations as a tool in environmental interpretation, Tasmania, Australia. *Sedimentary Geology* 167: 1–15. <https://doi.org/10.1016/j.sedgeo.2004.01.010>
- Biswas S.K. 1992. Tertiary stratigraphy of Kachchh. *Journal of the Palaeontological Society of India* 37: 1–29.
- Busk G. 1852. An account of the Polyzoa, and sertularian zoophytes, collected in the Voyage of the Rattlesnake, on the coasts of Australia and the Louisiade Archipelago. In: MacGillivray J. (ed.) *Narrative of the Voyage of the H.M.S. Rattlesnake* 1: 343–402.
- Canu F. & Bassler R.S. 1928. Les bryozoaires du Maroc et de Mauritanie, 2<sup>me</sup> mémoire. *Mémoires de la Société des Sciences naturelles du Maroc* 18: 1–85.
- Canu F. & Bassler R.S. 1929. Bryozoa of the Philippine region. *United States National Museum Bulletin* 100: 1–685.
- Canu F. & Bassler R.S. 1935. New species of Tertiary cheilostome Bryozoa from Victoria, Australia. *Smithsonian miscellaneous collections* 93: 1–54.

- Cook P.L. & Bock P.E. 2001. Calescharidae, a new family for the Tertiary to Recent genera *Caleschara* MacGillivray and *Tretosina* Canu & Bassler (Bryozoa: Cheilostomata). *Invertebrate Taxonomy* 15: 527–550. <https://doi.org/10.1071/it97013>
- Di Martino E. & Taylor P.D. 2014. Miocene Bryozoa from East Kalimantan, Indonesia. Part 1: Cyclostomata and ‘Anascan’ Cheilostomata. *Scripta Geologica* 146: 17–126.
- Gluhak T., Lewis J.E. & Popijac A. 2007. Bryozoan fauna of Green Island, Taiwan: First indications of biodiversity. *Zoological Studies* 46: 397–426.
- Guha A.K. & Gopikrishna K. 2004a. *Fossil Thalamoporella (Bryozoa) from the Tertiary sequences of Kachchh, Gujarat, India*. Irene Marine McCulloch Foundation Monograph Series 7, Hancock Institute of Marine Studies, University of Southern California, Los Angeles, Californis.
- Guha A.K. & Gopikrishna K. 2004b. *Reniporella gordonii*, a new genus and species of Bryozoa (Cheilostomata: Steginoporellidae) from the Middle Eocene of Western Kachchh, Gujarat, India with a note on its significance. *Neues Jahrbuch für Geologie und Paläontologie, Monatshefte* 11: 681–693.
- Guha A.K. & Gopikrishna K. 2005a. *Archoporella* – new hippopodid genus (Bryozoa: Cheilostomata) from the Palaeogene of Western Kachchh, Gujarat, India. *Neues Jahrbuch für Geologie und Paläontologie, Monatshefte* 7: 415–30. <https://doi.org/10.1127/njgpm/2005/2005/415>
- Guha A.K. & Gopikrishna K. 2005b. New petraliid cheilostome bryozoan taxa from Aquitanian of western Kachchh, Gujarat, India. *Neues Jahrbuch für Geologie und Paläontologie, Monatshefte* 11: 694–704. <https://doi.org/10.1127/njgpm/2005/2005/694>
- Guha A.K. & Gopikrishna K. 2005c. Diversity, evolution and palaeoecology of the Tertiary bryozoan assemblages of western Kachchh, Gujarat, India. *In*: Moyano H.I., Cancino, J.M. & Wyse Jackson P.N. (eds) *Bryozoan Studies 2004*: 107–118.
- Guha A.K. & Gopikrishna K. 2005d. Some fossil anascan bryozoan taxa from the Tertiary sequences of Western Kachchh, Gujarat. *Journal the Palaeontological Society of India* 50: 135–151.
- Guha A.K. & Gopikrishna K. 2005e. Lunulitiform cheilostome bryozoans from the Miocene sequences of western Kachchh, Gujarat, India *Journal of the Palaeontological Society of India* 50: 13–24.
- Guha A.K. & Gopikrishna K. 2005f. New smittinid (Bryozoa, Cheilostomata) species from Tertiary sequences of Western Kachchh, Gujarat, India. *Freiberger Forschungshefte C 507: Paläontologie, Stratigraphie, Fazies* 13: 11–25.
- Guha A.K. & Gopikrishna K. 2007a. New celleporid (Bryozoa, Cheilostomata) species from the Tertiary deposits of western Kachchh, Gujarat, India. *Paläontologische Zeitschrift* 81: 83–92. <https://doi.org/10.1007/bf02988381>
- Guha A.K. & Gopikrishna K. 2007b. New fossil steginoporellid and schizoporellid species (Bryozoa, Cheilostomata) from the Tertiary sequence of western Kachchh, Gujarat, India. *Journal of the Geological Society India* 69: 801–812.
- Guha A.K. & Gopikrishna K. 2007c. Cyclostome Bryozoa from the (Eocene) Lutetian of western Kachchh, Gujarat, India. *Journal of the Geological Society of India* 69: 1271–1278.
- Guha A.K. & Gopikrishna K. 2007d. New calloporid (Bryozoa, cheilostomata) species from Tertiary sequences of western Kachchh, Gujarat, India. *Journal of the Palaeontological Society of India* 70: 121–130.
- Guha A.K. & Gopikrishna K. 2007e. Some fossil ascophoran bryozoan taxa from Tertiary sequences of western Kachchh, Gujarat. *Journal of the Palaeontological Society of India* 52:195–222.

- Guha A.K. 2013. Tertiary Bryozoa from Western Kachchh, Gujarat – a review. *Journal of the Palaeontological Society of India* 58: 3–15.
- Harmer S.F. 1926. The Polyzoa of the Siboga Expedition, 2. Cheilostomata Anasca. *Siboga Expedition Reports* 28b: 183–501.
- Hincks T. 1880. *A history of the British Marine Polyzoa*. Van Voorst, London.  
<https://doi.org/10.5962/bhl.title.31555>
- Keij A.J. 1972. *Sylonika* and *Kylonisa* two new Palaeogene bryozoan genera (Cheilostomata, Skytoniidae). *Scripta Geology* 11: 1–15.
- Marcus E. 1937. Bryozoarios marinhos brasileiros I. *Boletim da Faculdade de filosofia, ciências e letras, Universidade di Sao Paolo, Zoologia* 1: 5–224.  
<https://doi.org/10.11606/issn.2526-4877.bsffclzoologia.1937.113912>
- McKinney F.K. & Jackson J.B.C. 1989. *Bryozoan Evolution. Studies in Paleobiology*. Unwin Hyman, Boston.
- Moissette P., Dulai A., Escarguel G., Kázmér M., Müller P. & Martin J. 2007. Mosaic of environments recorded by bryozoan faunas from the Middle Miocene of Hungary. *Palaeogeography, Palaeoclimatology, Palaeoecology* 252: 530–556. <https://doi.org/10.1016/j.palaeo.2007.05.010>
- Pourtalès L.F. 1867. Contributions to the fauna of the Gulf Stream at great depths. *Bulletin of the Museum of Comparative Zoology at Harvard College in Cambridge* 1: 103–120.
- Sandberg P.A. 1962. New cheilostome Bryozoa from the Miocene of the Dominican Republic. *Micropaleontology* 8: 61–66.
- Sendino C. & Taylor P.D. 2014. Pliocene bryozoans from Gran Canaria. In: Rosso A., Wyse Jackson P.N. & Porter J.S. (eds) *Bryozoan Studies 2013*: 229–239. Museo delle Scienze, Trento.  
<http://www2.muse.it/pubblicazioni/riviste.asp?tipo=18>
- Sonar M.A. & Gaikwad S. 2013a. Fossil steginoporellid (Cheilostomata: Neocheilostomina), Bryozoa from the Tertiary Sediments of Western Kachchh, Gujarat, India. *Journal of Earth System Science* 122: 149–161. <https://doi.org/10.1007/s12040-012-0253-z>
- Sonar M.A. & Gaikwad S. 2013b. Fossil neocheilostomine Bryozoa from the Tertiary Sediments of Western Kachchh, Gujarat, India. *Journal of the Geological Society of India* 81: 665–676.  
<https://doi.org/10.1007/s12594-013-0088-5>
- Sonar M.A. & Gaikwad S. 2013c. Cyclostome Bryozoa from the Cenozoic sediments of western Kachchh, Gujarat, India. *Journal of the Palaeontological Society of India* 58: 195–203.
- Sonar M.A. & Pawar R.V. 2016. Some calloporid (Bryozoa: Cheilostomata) species from the Cenozoic sediments of Western Kachchh, Gujarat. *Journal of the Geological Society India* 88: 47–54.  
<https://doi.org/10.1007/s12594-016-0457-y>
- Sonar M.A. & Badve R.M. 2019. Bryozoan fauna from the Burdigalian of Quilon Beds of Padappakara, Kerala, India. *Journal of the Geological Society of India* 93: 583–593.  
<https://doi.org/10.1007/s12594-019-1220-y>
- Sonar M.A., Pawar R.V. & Wayal D.V. 2022. Fossil Thalamoporellidae (Bryozoa) from Paleogene–Neogene sediments of western Kachchh, Gujarat, India. *Zootaxa* 5104: 251–274.  
<https://doi.org/10.11646/zootaxa.5104.2.5>
- Tewari B.S., Bhargava O.N. & Tandon K.K. 1958. Two cheilostome Bryozoa from Lower Miocene Beds of Kutch. *Journal of the Palaeontological Society of India* 3: 233–235.

- Tewari B.S. & Srivastava I.P. 1967. On some fossil Bryozoa from India. *Journal of the Geological Society of India* 3: 18–28.
- Thomas H.D. 1961. *Skylonia mirabilis* gen. et sp. nov., a problematical fossil from the Miocene of Kenya. *Annals and Magazine of Natural History Series* 13, 4: 359–363.
- Thornely L.R. 1907. Report on the marine Polyzoa in the collection of the Indian Museum. *Records of the Indian Museum* 1: 179–196.
- Tilbrook K.J. 1998. The species of *Antropora* Norman, 1903 (Bryozoa: Cheilostomatida), with the description of a new genus in the Calloporoidea. *Records of the South Australian Museum* 31: 25–49.
- Tilbrook K.J. 2006. Cheilostomatous Bryozoa from the Solomon Islands. *Santa Barbara Museum of Natural History Monographs 4 (Studies in Biodiversity)* 3: 1–386.
- Tilbrook K.J. & Vieira L.M. 2012. *Scrupocellaria* (Bryozoa: Cheilostomata) from the Queensland coast, with the description of three new species. *Zootaxa* 3528: 29–48.
- Vieira L.M., Spencer J.M. & Winston J.E. 2013. Resurrection of the genus *Licornia* for *Scrupocellaria jolloisii* (Bryozoa) and related species, with documentation of *L. jolloisii* as a non-indigenous species in the western Atlantic. *Journal of the Marine Biological Association of the United Kingdom* 93 (7): 1911–1921. <https://doi.org/10.1017/S0025315413000301>
- Winston J.E. 1982. Marine Bryozoans (Ectoprocta) of the Indian River area (Florida). *Bulletin of the American Museum of Natural History* 173: 99–176.
- Winston J.E. & Heimberg B.F. 1986. Bryozoans from Bali, Lombok, and Komodo. *American Museum Novitates* 2847: 1–49.
- WoRMS. 2022. Cheilostomatida. Available from <http://www.marinespecies.org/aphia.php?p=taxdetails&id=110722> [accessed 2 May 2022].
- Zágoršek K., Radwańska U. & Radwański A. 2012. Bryozoa from the Korytnica Basin (Middle Miocene; Holy Cross Mountains, Central Poland). *Bulletin of Geosciences* 87: 201–218. <https://doi.org/10.3140/bull.geosci.1249>

*Manuscript received: 22 January 2022*

*Manuscript accepted: 28 March 2022*

*Published on: 24 May 2022*

*Topic editor: Marie-Beatrice Forel*

*Desk editor: Eva-Maria Levermann*

Printed versions of all papers are also deposited in the libraries of the institutes that are members of the *EJT* consortium: Muséum national d'histoire naturelle, Paris, France; Meise Botanic Garden, Belgium; Royal Museum for Central Africa, Tervuren, Belgium; Royal Belgian Institute of Natural Sciences, Brussels, Belgium; Natural History Museum of Denmark, Copenhagen, Denmark; Naturalis Biodiversity Center, Leiden, the Netherlands; Museo Nacional de Ciencias Naturales-CSIC, Madrid, Spain; Real Jardín Botánico de Madrid CSIC, Spain; Zoological Research Museum Alexander Koenig, Bonn, Germany; National Museum, Prague, Czech Republic.