

Fig 1. *Cyparium collare* Pic, 1920. **A–D.** ♂ (SE, Areia Branca, MCN 166402). **A.** Dorsal view. **B.** Ventral view. **C.** Lateral view. **D.** Frontal view. **E–G.** ♂ (SE, Areia Branca, MCN 166403). **E.** Pronotum, dorsal view. **F.** Tergite VIII. **G.** Tergite IX. **H.** Sternite VIII. Scale bars: A–C = 1.0 mm; D, F–H = 0.2 mm; E = 0.5 mm. DOIxxx

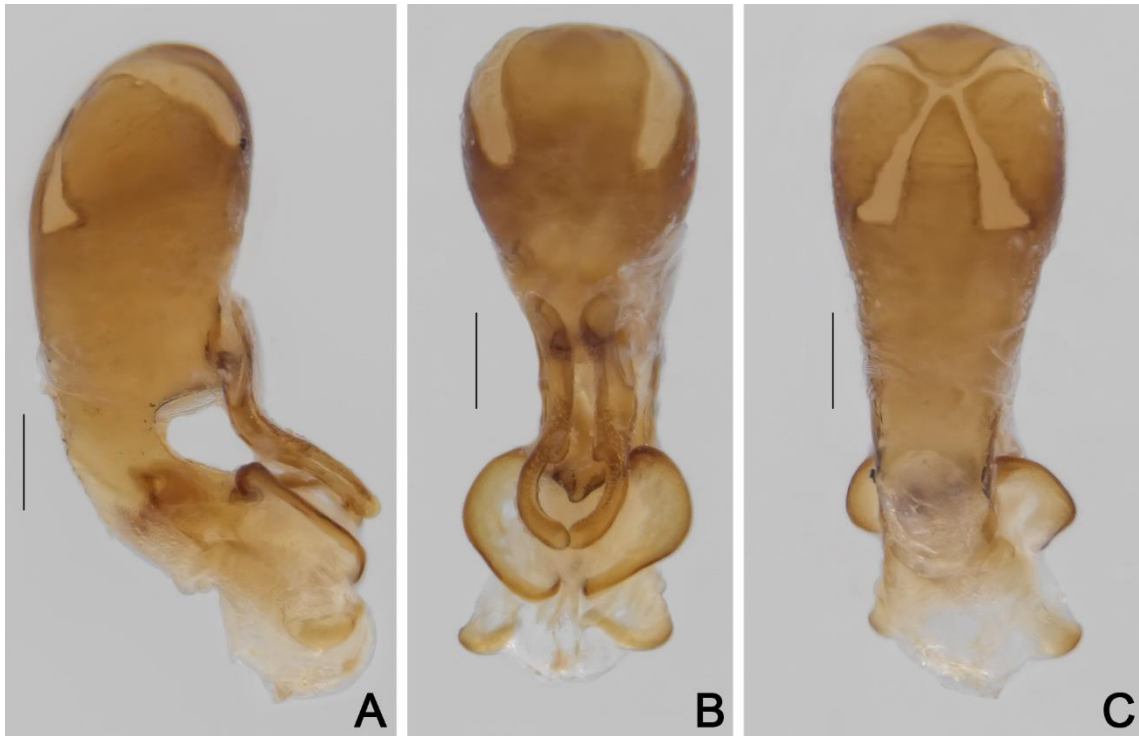


Fig 2. *Cyparium collare* Pic, 1920. ♂ (SE, Areia Branca, MCN 166403): aedeagi: **A**, lateral view; **B**, frontal view; **C**, dorsal view. Scale bars (in mm): 0.2.



Fig. 3. *Cyparium collare* Pic, 1920. **A–F.** ♂ (SE, Sta Luzia do Itanhi, MCN 166404). **A.** Dorsal view. **B.** Ventral view. **C.** Lateral view. **D.** Frontal view. **E.** Pronotum, dorsal view. **F.** Ventrite 1. **G.** ♂ (SE, Sta Luzia do Itanhi, MCN 166400), tergite VIII. Scale bars: A–C = 1.0 mm; D, F–G = 0.2 mm; E = 0.5 mm.

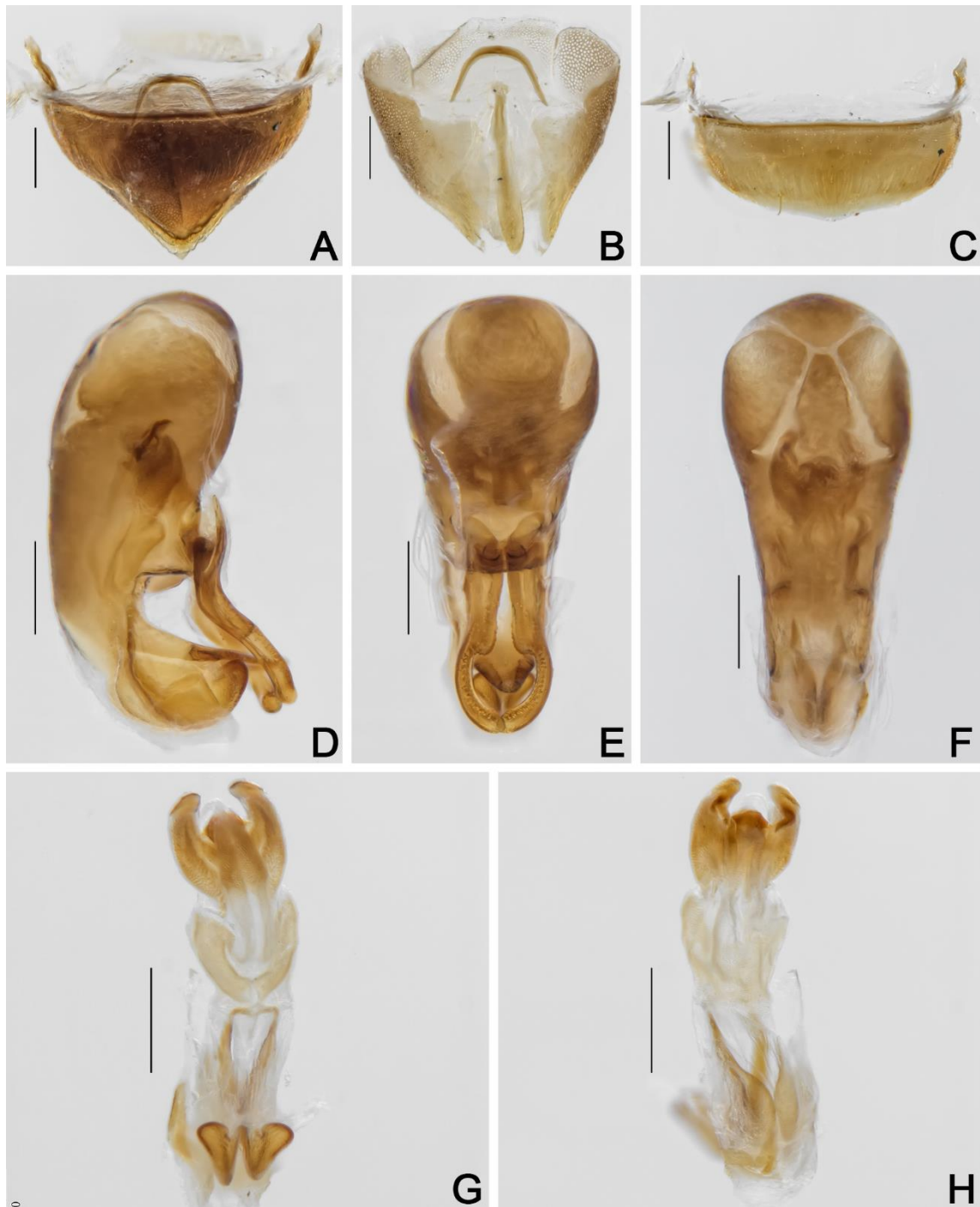


Fig. 4. *Cyparium collare* Pic, 1920. ♂ (SE, Sta Luzia do Itanhi, MCN 166400): **A**, terminalia; **B**, tergite IX; **C**, sternite VIII; aedeagi: **D**, lateral view; **E**, frontal view, **F**, dorsal view; internal sac: **G**, frontal view; **H**, dorsal view. Scales bars (in mm): 0.2.