



This work is licensed under a Creative Commons Attribution License (CC BY 4.0).

Monograph

[urn:lsid:zoobank.org/pub:7BFB006C-A661-4265-BB79-55239A6CDA7E](https://zoobank.org/pub:7BFB006C-A661-4265-BB79-55239A6CDA7E)

An annotated type catalogue of the Cerambycidae (Insecta: Coleoptera) in the Zoological Museum Hamburg

Juan Pablo BOTERO^{1,*}, Gérard L. TAVAKILIAN², Matthias SEIDEL³,
Martin HUSEMANN⁴ & Marianna V.P. SIMÕES⁵

¹Grupo de Sistemática Molecular, Laboratorio de Entomología, Pontificia Universidad Javeriana, Bogotá, Colombia.

²Antenne IRD, Entomologie, Département de Systématique et Évolution, Muséum national d'histoire naturelle, 45, rue Buffon, F-75005 Paris, France.

³Naturhistorisches Museum Wien, Zweite Zoologische Abteilung, Burgring 7, A-1010 Wien, Austria.

⁴University of Hamburg, Martin-Luther-King-Platz 3, D-20146 Hamburg, Germany.

⁴Leibniz Institute for the Analysis of Biodiversity Change, Zoological Museum Hamburg, Martin-Luther-King-Platz 3, D-20146 Hamburg, Germany.

⁵Senckenberg Research Institute and Natural History Museum, Senckenberganlage 25, D-60325 Frankfurt am Main, Germany.

*Corresponding author: jp_bot@yahoo.com

²Email: gerard.tavakilian@mnhn.fr

³Email: matth.seidel@gmail.com

⁴Email: m.husemann@leibniz-lib.de

⁵Email: marianna.simoese@senckenberg.de

¹[urn:lsid:zoobank.org/author:463CA17F-AC2C-44DF-85AB-2AEA79684A12](https://zoobank.org/author:463CA17F-AC2C-44DF-85AB-2AEA79684A12)

²[urn:lsid:zoobank.org/author:B7E768C1-0A46-4BDD-AA46-5B1D60558C8D](https://zoobank.org/author:B7E768C1-0A46-4BDD-AA46-5B1D60558C8D)

³[urn:lsid:zoobank.org/author:4DD9F954-99BB-49E9-AF45-D35E6D8903E3](https://zoobank.org/author:4DD9F954-99BB-49E9-AF45-D35E6D8903E3)

⁴[urn:lsid:zoobank.org/author:D31A05CA-DCD8-4CFB-A9D0-E9F070EC4707](https://zoobank.org/author:D31A05CA-DCD8-4CFB-A9D0-E9F070EC4707)

⁵[urn:lsid:zoobank.org/author:0049B0F0-797F-47BF-8856-F847B5186C35](https://zoobank.org/author:0049B0F0-797F-47BF-8856-F847B5186C35)

Abstract. An annotated catalogue of the type specimens of the family Cerambycidae Latreille, 1802 (Coleoptera) housed at the Zoological Museum of Hamburg (ZMH), Leibniz Institute for the Analysis of Biodiversity Change (LIB) is provided: one holotype and nine secondary types were found deposited at the ZMH. A list of the primary types lost during the bombardment in the Second World War is also provided, including types of 103 names, 14 of Cerambycinae, 87 of Lamiinae, and two of Prioninae. In addition, we report secondary types that have been found, corresponding to names of subspecific rank and unavailable names with infrasubspecific rank.

Keywords. Biodiversity, entomological collection, new distributional records, type catalogue, secondary types.

Botero J.P., Tavakilian G.L., Seidel M., Husemann M. & Simões M.V.P. 2023. An annotated type catalogue of the Cerambycidae (Insecta: Coleoptera) in the Zoological Museum Hamburg. *European Journal of Taxonomy* xxx: xxx–yyy. <https://doi.org/10.5852/ejt.2023.869.2111>

Introduction

With approximately five million specimens, the entomological collection of the Zoological Museum of the University of Hamburg (ZMH), now part of the Leibniz Institute for the Analysis of Biodiversity Change (LIB), is among the most important entomological collections in Germany (Simões *et al.* 2021; Zahiri *et al.* 2021). Prior to World War II, the collection contained about one million specimens, with an estimated 10,000 types (Weidner 1979). During the Allied bombing of Hamburg in 1943, major parts of the collection were destroyed, alongside documentation, such as accession books, inventory lists and card catalogues (Weidner 1979; Simões *et al.* 2021).

Later on, seeking to rebuild the collection, the curator Prof. Dr Erich Titschack (1924–1943, 1951–1978) invested in buying collections from diverse places, including an attempt to purchase the collection of René Oberthür (now at the National Museum of Natural History, Paris), one of the largest private collections of beetles at that time. Among the collections that were successfully purchased, was that of Pierre Charles Lepesme (1913–1957) which contained many exotic species, including more than 25,000 specimens of longhorn beetles (Cerambycidae).

Recently, efforts have been made to document and provide detailed catalogs of the types housed in the entomological collections at the ZMH (e.g., Sartori *et al.* 2016; Dey & Husemann 2018a, 2018b; Henningsen *et al.* 2020; Simões *et al.* 2021; Zahiri *et al.* 2021). The longhorn beetle collection was re-curated, systematically revised, organized and taxonomically updated. In order to establish a basis for further research, stabilize nomenclature and update the knowledge regarding this material, we provide a list of primary and secondary type specimens presently deposited at the ZMH, of primary type specimens deposited at the Zoological Museum Hamburg before WWII, but probably lost during the Second World War, and unavailable names published at infrasubspecific rank.

Material and methods

Taxonomy

Taxonomic changes were made after studying the relevant type material deposited or registered as deposited at ZMH. Synonyms proposed are listed only if discussed and the type material was examined. Classification follows Monné (2022a, 2022b, 2022c) and Tavakilian & Chevillotte (2022). For a full list of synonyms, please refer to the catalogues mentioned above.

Type material

Type localities are cited in their original spelling or with additional remarks (in square brackets), if required. All label data was transcribed verbatim as appearing on the respective labels. Double bars (//) separate data on different labels, and a single bar (/) separates lines within each label. Type specimens were provided with an additional red printed label with the following data “HOLOTYPE [or other respective category] | genus name in original combination | species name | author, year | Pablo *et al.* des. 2022”. Images of all the existing type specimens are provided. Labels were added, starting with the code “ZMH” and followed with the registration number. Additional comments are placed in square brackets. Subspecific names, published after 1961, where the author expressly used one of the terms “variety” or “form” (including use of the terms “var.”, “forma”, “v.” and “f.”), were listed as invalid, following the International Commission on Zoological Nomenclature (ICZN 1999: Article 45.6.4).

Institutional abbreviations

Institutional abbreviations cited in the text follow Evenhuis (2014).

BMNH = Natural History Museum (formerly British Museum, Natural History), London, UK

IRSNB = Institut Royal des Sciences Naturelles de Belgique, Brussels, Belgium

MNHN = Muséum national d'histoire naturelle, Paris, France

NHMB = Naturhistorisches Museum Basel, Basel, Switzerland

ZMH = Zoological Museum Hamburg

ZSMC = Zoologische Staatssammlung des Bayerischen Staates, Munich, Germany

Results

Class Insecta Linnaeus, 1758

Order Coleoptera Linnaeus, 1758

Suborder Polyphaga Emery, 1886

Superfamily Chrysomeloidea Latreille, 1802

Family **Cerambycidae** Latreille, 1802

Primary type specimen deposited at the Zoological Museum Hamburg

Subfamily Lamiinae Latreille, 1825

Ites colasi Lepesme, 1943

Figs 1–2

Ites colasi Lepesme, 1943: 135.

Holotype

FRENCH GUIANA • ♂; “Guyane Fr. / Maroni / Coll. LeMoult // Ites Type / Colasi n.sp. / P. Lepesme det. // TYPE // Sammlung / P. Lepesme / Eing. Nr. 2, 1949 // ZMH 824639”; ZMH 824639.

Type locality

Guyane, Maroni [French Guiana].

Current status

Valid species.

Secondary type specimens deposited at the Zoological Museum Hamburg

Subfamily Lamiinae Latreille, 1825

Acridoschema favareli Le Moult, 1938

Figs 3–4

Acridoschema favareli Le Moult, 1938: 30.

Paratypes

GABON • 1 ex.; “GABON / BAS-OGOOUÉ // COLL^{on} LE MOULT / Naturaliste, Paris // COTYPE // *Acridoschema* / Favareli / Le Moult / P. Lepesme det. // Sammlung / P. Lepesme / Eing. Nr. 2, 1949 // ZMH 824657”; ZMH 824657 • 4 exs; “GABON / BAS-OGOOUÉ // COLL^{on} LE MOULT / Naturaliste,

Paris // COTYPE // Sammlung / P. Lepesme / Eing. Nr. 2, 1949 // [ZMH 824658-824661]”; ZMH 824658-824661.

Type locality

Bas Ogooué, Gabon.

Current status

Junior synonym of *Acridoschema capricorne* Thomson, 1858.

Remarks

Although Le Moult (1938) only stated that the holotype is deposited in his collection (now at the IRSNB) and did not refer to paratypes, he gave a range of sizes in the original description, showing that there was more than one specimen (paratypes).

Cyclopeplus peruvianus Tippmann, 1939
Figs 5–6

Cyclopeplus peruvianus Tippmann, 1939: 77.

Cyclopeplus peruvianus ab. *coeruleometallescens* Tippmann, 1939: 77.

Cyclopeplus peruvianus ab. *submetallicus* Tippmann, 1939: 77.

Cyclopeplus peruvianus ab. *thoracicus* Tippmann, 1939: 77.

Cyclopeplus peruvianus ab. *viridemetallescens* Tippmann, 1939: 77.

Paratypes

PERU • 1 ♀; “Satipo 1938 / PERU 1938 / TIPPMANN, WIEN // Satipo / PERU // =TIPPMANN / XI. 1938 // ♀ // COTYPE // Peru / 1938 // Coll. E. Ross / Berlin N. 58 // Cyclopeplus / peruvianus / 370.) Tippm. / Peru. // ZMH 824664”; ZMH 824665 • 1 ♀; same collection data as for preceding; ZMH 824665; ZMH 824665.

Type locality

Area around Rio Perené, Satipo, Peru.

Current status

Valid species.

Remarks

Tippmann (1939) only provided detailed locality data for the two specimens he collected personally; the other type specimens were collected by local collectors in the same area. Only one specimen (ZMH824664) bears original Tippmann labels, whereas the other specimen (ZMH824665) only has handwritten or printed labels provided by Emil Ross, from whom the specimens came to the ZMH. The holotype is deposited at the USNM (former F. Tippmann collection # 41681) and further paratypes are at the SNSD and MCSNM.

The collection of Friedrich F. Tippmann (1894–1974) was the largest specialized collection of the longhorn beetles that ever existed, with more than 100,000 specimens, of nearly 3000 genera and 1500 species from around the world (Monné 2006). According to the database of the Senckenberg Deutsches Entomologisches Institut (SDEI), most of his material is currently deposited at the USNM. Evidence of how some of his type material arrived to the ZMH remains elusive, as major parts of the collection were destroyed including all documentation, such as accession books, inventory lists and



Figs 1–9. Primary and secondary type specimens deposited at the Zoological Museum Hamburg. 1–2. Primary type: *Ites colasi* Lepesme, 1943, ♂, holotype (ZMH 824639). 3–9. Secondary types. 3–4. *Acridoschema favareli* Le Moult, 1938, paratype (ZMH 824657). 5–6. *Cyclopeplus peruvianus* Tippmann, 1939, ♀, paratype (ZMH 824664). 7–8. *Leucographus catalai* Villiers, 1939, sex, paratype (ZMH 824638). 9. *Zographus regalis poleti* Le Moult, 1939, dorsal view, sex, paratype (ZMH 843927) Scale bars = 1 cm.

card catalogues were lost during the Allied bombing of Hamburg in 1943, (Simões *et al.* 2021). Thus, we speculate that the material arrived at the ZMH along with the collection of Emil Ross (1870–1943), who had one of the largest and most important private collections in Germany (Weidner 1976), was transferred to the ZMH in 1944 (Weidner 1976; Simões *et al.* 2021).

Leucographus catalai Villiers, 1939
Figs 7–8

Leucographus catalai Villiers, 1939: 206.

Paratype

MADAGASCAR • 1 ex.; “Madagascar / Ankarampotsy / Tantamala / F.C.E. // 950–1100 m. // *Leucographus* / *Catalai* / Villiers / P. Lapesme det. // COTYPE // MUSEUM PARIS / 1934 / R. CATALA // Sammlung / P. Lapesme / Eing. Nr. 2, 1949 // ZMH 824638”; ZMH 824638.

Type locality

Ankarampotsy / Tantamala, Madagascar.

Current status

Valid species.

Remarks

Villiers (1939) distinguished between type and cotypes, and therefore they should be interpreted as holotype and paratypes. The holotype and additional paratypes are deposited in MNHN.

Zographus regalis poleti Le Moult, 1939
Figs 9–10

Zoographus regalis poleti Le Moult, 1939: 92.

Zoographus regalis poleti ab. *Viridisparsus* Le Moult, 1939: 92.

Zoographus regalis poleti ab. *Viridiventris* Le Moult, 1939: 93.

Zoographus regalis poleti ab. *Viridicollis* Le Moult, 1939: 93.

Paratypes

SIERRA LEONE • 1 ex.; “Pujehun / Sierra Leone / Coll. Le Moult // Paratype Sammlung / P. Lapesme / Eing. Nr. 2, 1949 // ZMH 843920”; ZMH 843920 • 1 ex.; “SIERRA LEONE / MOYAMBA // COLL^{on} LE MOULT / Naturaliste, Paris // PARATYPE // Sammlung / P. Lapesme / Eing. Nr. 2, 1949 // ZMH 824642”; ZMH 824642 • 13 exs; “SIERRA LEONE / MOYAMBA // COLL^{on} LE MOULT / Naturaliste, Paris // PARATYPE // Sammlung / P. Lapesme / Eing. Nr. 2, 1949 // [ZMH 843921-843933]”; ZMH 843921-843933 • 2 exs; “SIERRA LEONE / MOYAMBA // COLL^{on} LE MOULT / Naturaliste, Paris // sans traces / orangee sous / l’abdomen // PARATYPE // Sammlung / P. Lapesme / Eing. Nr. 2, 1949 // [ZMH 843934-843935]”; ZMH 843934-843935 • 1 ex.; ‘MOYAMBA / SIERRA LEONE // COLL^{on} LE MOULT / Naturaliste, Paris // PARATYPE // Sammlung / P. Lapesme / Eing. Nr. 2, 1949 // ZMH 843936”; ZMH 843936 • 1 ex.; “MOYAMBA / SIERRA LEONE // COLL^{on} LE MOULT / Naturaliste, Paris // PARATYPE // Sammlung / P. Lapesme / Eing. Nr. 2, 1949 // ZMH 843039”; ZMH 843039 • 6 exs; SIERRA LEONE / MOYAMBA // COLL^{on} LE MOULT / Naturaliste, Paris // PARATYPE // Sammlung / P. Lapesme / Eing. Nr. 2, 1949 // [ZMH 843040-843045]”; ZMH 843040-843045 • 38 exs; “Moyamba / Sierra Leone // Sammlung / P. Lapesme / Eing. Nr. 2, 1949 // [ZMH 843046-843083]”; ZMH 843046-843083.

Type localities

Mayumba and Pujehun, Sierra Leone.

Current status

Synonym of *Zographus regalis regalis* (Brown, 1776).

Remarks

All paratypes of Le Moults's subspecies and aberrations of *Z. regalis* were found combined in one drawer without separation or indication to which name they belong. The single specimen (ZMH 843920) can be confidently assigned to the *Z. regalis poleti* s. str. since the nominal form of this subspecies was described from Mayumba and Pujehun. The aberrations *viridisparvus*, *viridiventris* and *viridicollis* are from Mayumba only. Thirty further specimens labelled with Mayumba, Sierra Leone, do not bear a paratype label but they might also be paratypes.

Zographus regalis favareli Le Moults, 1939

Figs 11–12

Zographus regalis favareli Le Moults, 1939: 94.

Zographus regalis favareli ab. *pseudocuprea* Le Moults, 1939: 94.

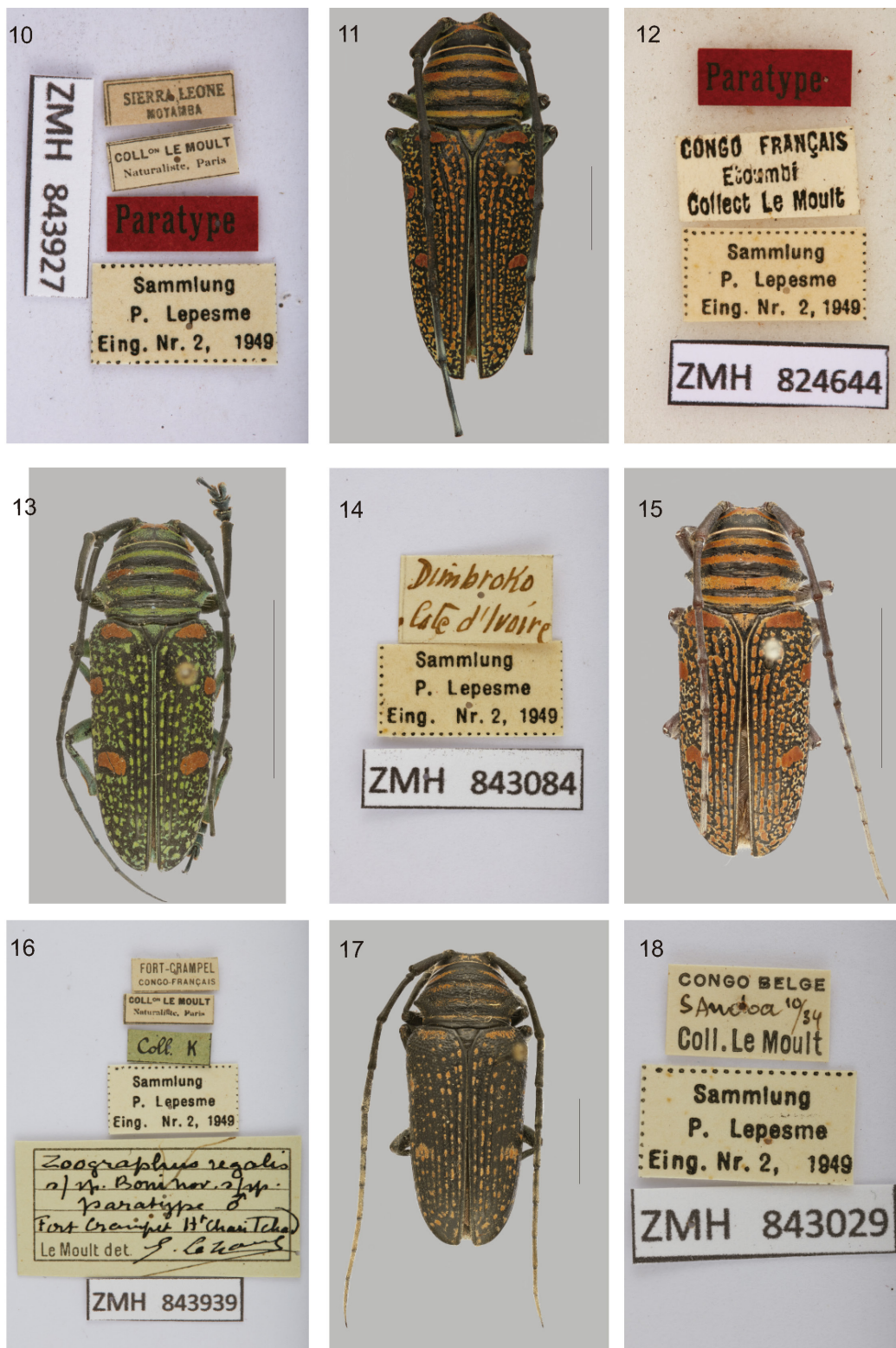
Zographus regalis favareli ab. *viridimarginatus* Le Moults, 1939: 94.

Zographus regalis favareli ab. *viridiventris* Le Moults, 1939: 95.

Paratypes

REPUBLIC OF THE CONGO • 1 ex.; “Congo Français / Etoumbi / Coll. Le Moults // Paratype // Sammlung / P. Lepesme / Eing. Nr. 2, 1949 // ZMH 824643”; ZMH 824643 • 1 ex.; “CONGO FRANÇAIS / Etoumbi / Collect Le Moults // Paratype // Sammlung / P. Lepesme / Eing. Nr. 2, 1949 // ZMH 843937”; ZMH 843937 • 1 ex.; “CONGO FRANÇAIS / Etoumbi / Collect Le Moults // Paratype // Sammlung / P. Lepesme / Eing. Nr. 2, 1949 // ZMH 824644”; ZMH 824644 • 1 ex.; “ETOUMBI / Congo Franç. / Coll. Le Moults // Paratype // Sammlung / P. Lepesme / Eing. Nr. 2, 1949 // ZMH 843938”; ZMH 843938 • 1 ex.; “Zographus Regalis / s/sp Favareli / Etoumbi Moyen Congo / nov s/sp paratype / Le Moults det. E. LeMoults // Congo Français / Etoumbi / Coll. Le Moults // PARATYPE // Sammlung / P. Lepesme / Eing. Nr. 2, 1949 // ZMH 843984”; ZMH 843984 • 2 exs; “Congo Français / Etoumbi / Coll. Le Moults // PARATYPE // Sammlung / P. Lepesme / Eing. Nr., 1949 // [ZMH 843985-843986]”; ZMH 843985-843986 • 1 ex.; “ETOUMBI / Congo Franç. / Coll. Le Moults // Paratype // Sammlung / P. Lepesme / Eing. Nr. 2, 1949 // ZMH 843987”; ZMH • 2 exs; “CONGO FRANÇAIS / Etoumbi / Collect Le Moults // Paratype // Sammlung / P. Lepesme / Eing. Nr. 2, 1949 // [ZMH 824988-824989]”; ZMH 824988-824989 • 100 exs; “ETOUMBI / Congo Franç. / Coll. Le Moults // Sammlung / P. Lepesme / Eing. Nr. 2, 1949 // [ZMH 843900-843999]”; ZMH 843900-843999 • 14 exs ‘Etoumbi / Congo fr. // Sammlung / P. Lepesme / Eing. Nr. 2, 1949 // [ZMH 843000-843013]”; ZMH 843000-843013 • 4 exs; “Bas- / Ogooué // Sammlung / P. Lepesme / Eing. Nr. 2, 1949 // [ZMH 843014-843017]”; ZMH 843014-843017 • 1 ex.; “Bénito / Congo Franç. // Sammlung / P. Lepesme / Eing. Nr. 2, 1949 // ZMH 843024”; ZMH 843024 • 2 exs; ‘Etoumbi / Congo fr. // Sammlung / P. Lepesme / Eing. Nr. 2, 1949 // [ZMH 843025-843026]”; ZMH 843025-843026.

GABON • 1 ex.; “GABON / BAS-OGOOÉ // EX-COLLECTION / FAVAREL // Sammlung / P. Lepesme / Eing. Nr. 2, 1949 // ZMH 843018”; ZMH 843018 • 2 exs; “GABON / BAS-OGOOÉ // Sammlung / P. Lepesme / Eing. Nr. 2, 1949 // [ZMH 843019-843020]”; ZMH 843019-843020 • 1 ex.; “Gabon / Bas Ogooué // Sammlung / P. Lepesme / Eing. Nr. 2, 1949 // ZMH 843021”; ZMH 843021.



Figs 10–18. Secondary type specimens deposited at the Zoological Museum Hamburg. **10.** *Zographus regalis poleti* Le Mout, 1939, paratype (ZMH 843927), labels. **11–12.** *Zographus regalis favareli* Le Mout, 1939, paratype (ZMH 824644). **13–14.** *Zographus regalis dyoti* Le Mout, 1939, paratype (ZMH 843084). **15–16.** *Zographus regalis boni* Le Mout, 1939, paratype (ZMH 843939). **17–18.** *Zographus regalis lualabensis* Le Mout, 1939, paratype (ZMH 843029). Scale bars = 1 cm.

CAMEROON • 2 exs; “D’Moungue / Cameroun / Coll. Le Moulton // Sammlung / P. Lapesme / Eing. Nr. 2, 1949 // [ZMH 843022-843023]”; ZMH 843022-843023.

Type localities

Bas-Oogué (Gabon); Benito, Etoumib, Mossaka River (Republic of the Congo); Kribi (Cameroon); Southeast and South Cameroon.

Current status

Synonym of *Zographus regalis regalis* (Brown, 1776).

Remarks

All paratypes of Le Moulton’s aberrations of *Z. regalis favareli* were found combined in one drawer without separation or indication to which name they belong. The aberrations *pseudocuprea*, *viridimarginatus* and *viridiventrus* are also described from Etoumibi. The single specimen (ZMH 843024) can be confidently assigned to the *Z. regalis favareli* s. str. since only the normal form of this subspecies was described from Bénito.

***Zographus regalis dyoti* Le Moulton, 1939**

Figs 13–14

Zographus regalis dyoti Le Moulton, 1939: 93.

Possible paratypes

IVORY COAST • 23 exs; “Dimbroko / Cote d’Ivoire // Sammlung / P. Lapesme / Eing. Nr. 2, 1949 // [ZMH 843084-843106]”; ZMH 843084-843106.

Type locality

Dimbroko (Ivory Coast).

Current status

Synonym of *Zographus regalis regalis* (Brown, 1776).

Remarks

The 23 specimens listed above possess handwritten labels from Dimbroko and were mixed with the other specimens of *Zographus regalis* names described by Le Moulton, thus they may or may not be paratypes of *Zographus regalis dyoti* Le Moulton, 1939.

***Zographus regalis boni* Le Moulton, 1939**

Figs 15–16

Zographus regalis boni Le Moulton, 1939: 93.

Paratypes

CENTRAL AFRICAN REPUBLIC • 1 ♂; “*Zographus regalis* / n/sp. Boni nov. s/sp. / paratype ♂ / Fort Crampel H^e Chari Tchad / LeMoulton det. E. LeMoulton // FORT-CRAMPEL / CONGO FRANÇAIS // COLL^{on} LE MOULT / Naturaliste, Paris // Coll. K // Sammlung / P. Lapesme / Eing. Nr. 2, 1949 // ZMH 843939”; ZMH 843939 • 1 ex.; “FORT-CRAMPEL / CONGO FRANÇAIS // COLL^{on} LE MOULT / Naturaliste, Paris // Coll. K // Sammlung / P. Lapesme / Eing. Nr. 2, 1949 // ZMH 843940”;

ZMH 843940 • 5 exs; “FORT-CRAMPEL / CONGO FRANÇAIS // COLL^{on} LE MOULT / Naturaliste, Paris // Coll. X // Sammlung / P. Lapesme / Eing. Nr. 2, 1949 // [ZMH 843941-843944]”; ZMH 843941-843944 • 1 ex.; “FORT-SIBUT / Haut-Chari, Congo Français / COLLECTION LE MOULT // Sammlung / P. Lapesme / Eing. Nr. 2, 1949 // ZMH 843945”; ZMH 843945 • 1 ex.; “H^t Chari-Tchad / FORT-SIBUT / COLLECTION LE MOULT // Sternotomis / regalis F. // Sammlung / P. Lapesme / Eing. Nr. 2, 1949 // ZMH 843946”; ZMH 843946 • 11 exs; “F^t Crampel / Congo // Sammlung / P. Lapesme / Eing. Nr. 2, 1949 // [ZMH 843947-843957]”; ZMH 843947-843957.

Type localities

Fort-Sibut [= Sibut] and Fort-Crampel [= Kaga-Bandoro] (Central African Republic).

Current status

Synonym of *Zographus regalis regalis* (Brown, 1776).

Remarks

Only the first specimen in the series deposited at the ZMH had an identification label, but we consider all specimens to be paratypes since it is very common for Le Mout types not to be completely labelled.

Zographus regalis lualabensis Le Mout, 1939 Figs 17–18

Zographus regalis lualabensis Le Mout, 1939: 95.

Possible paratypes

D.R. CONGO • 3 exs; “CONGO BELGE / Sandoa 10/34 / Coll. Le Mout // Sammlung / P. Lapesme / Eing. Nr. 2, 1949 // [ZMH 843027-843029]”; ZMH 843027-843029 • 9 exs; “Sandoa / Congo Belge // Sammlung / P. Lapesme / Eing. Nr. 2, 1949 // [ZMH 843030-843038]”; ZMH 843030-843038.

Type locality

Sandoa, Lualaba Province (Democratic Republic of the Congo).

Current status

Synonym of *Zographus regalis regalis* (Brown, 1776).

Remarks

All specimens were placed under *Zographus regalis boni* paratypes at the ZMH collection, but based on Le Mout (1939) these should belong to the subspecies *lualabensis*.

Subfamily Prioninae Latreille, 1802

Hoploderes spinipennis nitidior Lameere, 1906 Figs 19–20

Hoploderes nitidior Lameere, 1906: 364.

Invalid type

MADAGASCAR • 1 ex.; “MADAGASCAR / De Broissia (?) / Diego. 1905 (?)// Hoploderes / nitidior / A. Lameere vid. 1915 // Hoploderes / nitidior / Lmr. / P. Lapesme det. // TYPE // ZMH 824635”; ZMH 824635.

Type locality

Grande-Comore, Comoros.

Remarks

The specimen from ZMH does not belong to the type series since Lameere (1906) lists only one male from Diego-Suarez (Madagascar) deposited in the Tring Museum (Tring, United Kingdom) and the identification label from Lameere postdates the original description. The lectotype of the species is deposited at the MNHN.

Primary type specimens (probably) lost during the Second World War

Subfamily Cerambycinae Latreille, 1802

Acyphoderes forficulifera Gounelle, 1913

Acyphoderes forficulifera Gounelle, 1913: 388.

Sphecomorpha forficulifera Monné & Giesbert, 1992: 250.

Forficuladeres forficulifera – Clarke, 2015: 37. — Wappes & Santos-Silva 2021:10, figs 26–29 (lectotype designation)

Type status (number of specimens)

Syntypes (2).

Type locality

Colombia, mountains of “La Garita”.

Current status

Valid species, currently under the combination *Forficuladeres forficulifera* (Gounelle, 1913).

Remarks

The type series was probably composed of 3 syntypes, 2 of them were at the ZMH and probably lost with the WWII bombing, and 1 male deposited at the MNHN. That last specimen was recently designated as lectotype by Wappes & Santos-Silva (2021). According to the “Diccionario Geográfico de Colombia” (IGAC 1996), in Colombia, there are four toponyms for “La Garita,” making it difficult to determine the precise type-locality (for more information see Botero & Monné 2012: 21)

Callichroma (Xystochroma) setigerum Schmidt, 1924

Callichroma (Xystochroma) setigerum Schmidt, 1924: 302.

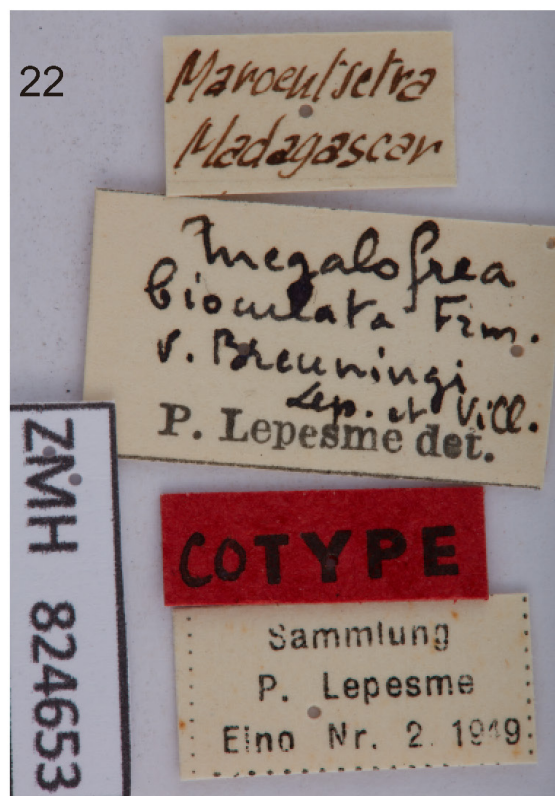
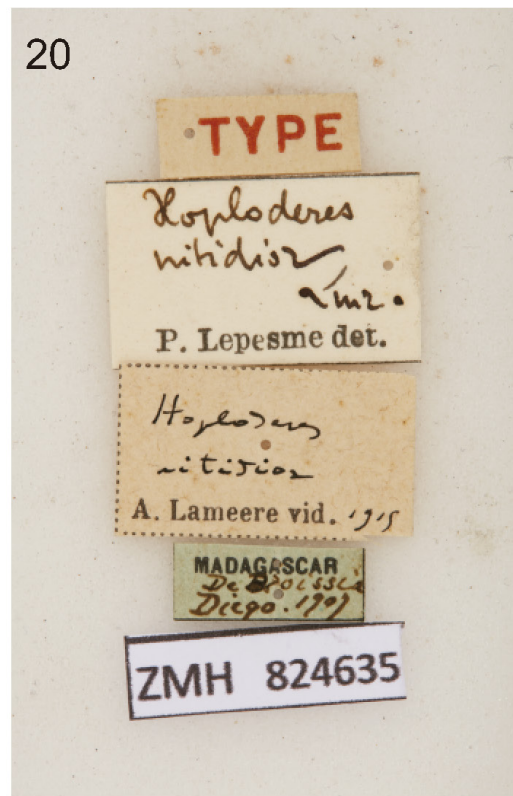
Xystochroma setigerum Podany, 1965: 39.

Type status

Holotype.

Type locality

Colombia.



Figs 19–22. Secondary type specimens deposited at the Zoological Museum Hamburg. 19–20. *Hoploderes spinipennis nitidior* Lameere, 1906, paratype (ZMH 824635). 21–22. *Megalofrea bioculata* var. *breuningi* Lepesme & Villiers, 1944, paratype (ZMH 824653). Scale bars= 1 cm.

Current status

Valid species, currently under the combination *Xystochroma setigerum* (Schmidt, 1924).

Cerambyx paris Wiedemann, 1821

Cerambyx Paris Wiedemann, 1821: 167.

Hammaticherus paris White, 1853: 128.

Neocerambyx paris Thomson, 1861: 194.

Type status

Holotype.

Type locality

Bengalia [India, Bengali].

Current status

Valid species, currently under the combination *Neocerambyx paris* Wiedemann, 1821.

Clytus (Xylotrochus) variicollis Fairmaire, 1883

Clytus (Xylotrochus) variicollis Fairmaire, 1883: 52.

Xylotrechus variicollis Aurivillius, 1912: 367.

Type status

Holotype.

Type locality

Île du Duc d'York [Papua New Guinea, Duke of York Islands].

Current status

Valid species, currently under the combination *Xylotrechus variicollis* (Fairmaire, 1883).

Coptocercus scripticollis Carter, 1930

Coptocercus scripticollis Carter, 1930: 548, fig. 13.

Type status

Holotype.

Type locality

Victoria, Portland [Australia, Victoria, Portland].

Current status

Valid species.

Cyllene quinquefasciata Melzer, 1931

Cyllene quinquefasciata Melzer, 1931: 55, pl. 12 fig. 15.

Megacyllene quinquefasciata – Peña 1974: 306.

Type status (number of specimens)

Syntypes (2).

Type locality

Bolivia [Bolivia, Oruro, Avisaia].

Current status

Valid species, currently under the combination *Megacyllene quinquefasciata* (Melzer, 1931).

***Euporus liobasis cuprinus* Schmidt, 1922**

Euporus liobasis subsp. *cuprinus* Schmidt, 1922: 151.

Type status

Holotype.

Type localities

Belg. Kongo: Kondué [Congo: Kondue].

Current status

Valid subspecies of *Euporus liobasis* Bates, 1879.

***Euporus partitus* Gerstaecker, 1884**

Euporus partitus Gerstaecker, 1884: 60.

Euporus (Sphaleroporus) partitus Schmidt, 1922: 146.

Type status

Holotype.

Type locality

Pangani [Tanzania, Tanga, Pangani].

Current status

Valid species.

***Hololeprus variolosus* Gerstaecker, 1884**

Hololeprus variolosus Gerstaecker, 1884: 60.

Type status

Holotype.

Type locality

Pangani [Tanzania, Tanga, Pangani].

Current status

Valid species.

Litopus patricius Gerstaecker, 1884

Litopus patricius Gerstaecker, 1884: 60.

Type status

Holotype.

Type locality

Pangani [Tanzania, Tanga, Pangani].

Current status

Valid species.

Molitones flavipennis Gounelle, 1913

Molitones flavipennis Gounelle, 1913: 423, fig. 1 (male).

Type status (number of specimens)

Syntypes (2).

Type locality

Colombia, mountains of “La Garita”.

Current status

Valid species.

Remarks

According to the “Diccionario Geográfico de Colombia” (IGAC 1996), in Colombia, there are four toponyms for “La Garita,” thus it is difficult to obtain the precise type locality (for more information see Botero & Monné 2012: 21).

Oxyprosopus coeruleus subsp. *atratus* Schmidt, 1922

Oxyprosopus coeruleus atratus Schmidt, 1922: 168.

Type status

Syntypes.

Type locality

Kamerun. Mukonje-Farm bei Mundame [Cameroon, Mundame, Mukonje Farm]; Victoria [Congo; Australia, Victoria].

Current status

Valid subspecies of *Oxyprosopus chloereus* Bates, 1879.

Oxyprosopus similis subsp. *purpurascens* Schmidt, 1922

Oxyprosopus similis purpurascens Schmidt, 1922: 169.

Oxyprosopus angulicollis purpurascens Juhel, 2017: 99.

Type status

Holotype.

Type locality

Belg. Kongo: Kimienza [Congo].

Current status

Valid subspecies of *Oxyprosopus angulicollis* Bates, 1879.

Philematium currori subsp. *schantzei* Schmidt, 1922

Philematium currori subsp. *schantzei* Schmidt, 1922: 106.

Type status

Holotype.

Type locality

Belg. Kongo: Kimienza [Congo].

Current status

Valid subspecies of *Philematium currori* (White, 1853).

Subfamily Lamiinea Latreille, 1825

Acmocera insularis Breuning, 1940

Acmocera insularis Breuning, 1940b: 129.

Type status

Holotype.

Type locality

Insel St. Thomé [São Tomé Island].

Current status

Valid species.

Aethiopia damarensis Breuning, 1943

Aethiopia elongata Aurivillius, 1911: 220.

Aethiopia damarensis – Breuning 1943: 40. — Adlbauer & Beck 2015: 151 (syn.).

Type status

Holotype.

Type locality

Damaraland: Grootfontain, Farm Neitsas [Namibia].

Current status

Junior synonym of *Aethiopia elongata* Aurivillius, 1911.

Aetholopus sericeus Breuning, 1938

Aetholopus sericeus Breuning, 1938a: 224.

Type status

Holotype.

Type locality

Luzon: Rizal [Philippines, Province of Rizal].

Current status

Valid species.

Agelasta luzonica Breuning, 1938

Agelasta luzonica Breuning, 1938a: 210.

Type status

Holotype.

Type locality

Luzon: Laguna, Paete. [Philippines, Province of Laguna (Paete)].

Current status

Valid species.

Remarks

Hüdepohl (1985: 378) designated a female neotype, from Romblon (Philippines), which is currently deposited at ZSMC (ex collection Karl-Ernst Hüdepohl).

Apomecyna amaniensis Breuning, 1943

Apomecyna densemaculata Breuning, 1938b: 51.

Apomecyna amaniensis – Breuning 1943: 35. — Teocchi *et al.* 2004: 14 (syn.).

Type status

Holotype.

Type locality

Tanganijka-Territorium: Amani [Tanzania, Muheza District (Amani)].

Current status

Junior synonym of *Apomecyna densemaculata* Breuning, 1938.

Apomecyna luzonica Breuning, 1938

Apomecyna luzonica Breuning, 1938b: 50.

Type status

Holotype.

Type locality

Philippines: Luçon, Laguna, Mont Maquiling [Philippines, Luzon].

Current status

Valid species.

Apriona ammiralis Breuning, 1935

Apriona ammiralis Breuning, 1935c: 276.

Type status

Holotype.

Type locality

Insel Pak, Admiraltätsinseln [Papua New Guinea, Manus province, Admiralty Islands].

Current status

Valid species.

Remarks

Three specimens from Admiralty Island labelled as paratypes are in BMNH (M.V.L. Barclay pers. comm.).

Ceroplesis lacunosa Gerstaecker, 1884

Ceroplesis Pauli Fairmaire, 1884: cxlviii.

Ceroplesis revoili pauli Breuning, 1938c: 115.

Ceroplesis lacunosa Gerstaecker, 1884: 61.

Type locality

Tanzania [Deutsch Ost-Afrika (Massai-Land)].

Current status

Junior synonym of *Ceroplesis revoili pauli* Fairmaire, 1884.

Cleptometopus javanicus Breuning, 1943

Cleptometopus javanicus Breuning, 1943: 62.

Type status

Holotype.

Type locality

Java: Prahoe, Goenoeng-Tangkoeban [Indonesia, Java].

Current status

Valid species.

Cleptometopus striatopunctatus drescheri Breuning, 1943

Cleptometopus striatopunctatus subsp. *Drescheri* – Breuning, 1943: 63.

Type status

Holotype.

Type locality

Java: Praho, Goenoeng, Tangkoeban [Indonesia, Java].

Current status

Valid subspecies of *Cleptometopus striatopunctatus* Breuning, 1940.

Cloniocerus alboticticus Breuning, 1940

Cloniocerus alboticticus Breuning, 1940b: 151.

Type status

Holotype.

Type locality

Süd-Afrika: Kapland [South Africa].

Current status

Valid species.

Desisa parvula Breuning, 1938

Desisa parvula Breuning, 1938a: 374.

Type status

Holotype.

Type locality

Luzon: Rizal [Philippines, Province of Rizal].

Current status

Valid species.

Diadelioides camerunensis Breuning, 1942

Diadelioides camarenunsis Breuning, 1942a: 160.

Type status

Holotype.

Type locality

Kamerun: Buea [Cameroon, Buea].

Current status

Valid species.

Diadelioides exiguus Breuning, 1943

Diadelioides exiguus Breuning, 1943: 48.

Type status

Holotype.

Type locality

Kamerun: Umgebung Kamerunberg, Ekona [Cameroon].

Current status

Valid species.

Dichostates capucinus Gerstaecker, 1884

Dichostates capucinus Gerstaecker, 1884: 62.

Crossotus capucinus Breuning, 1942a: 15.

Type status

Holotype.

Type locality

Pangani [Tanzania, Tanga, Pangani].

Current status

Valid species, currently under the combination *Crossotus capucinus* (Gerstaecker, 1884).

Didymodonta orientalis Breuning, 1936

Dityloderus balteatus Aurivillius, 1903: 316.

Monoxenus (Dityloderus) balteatus Breuning, 1940: 409 (syn.).

Didymodonta orientalis Breuning, 1936a: 314.

Type status

Holotype.

Type locality

Tanganjika-Territorium: Kilimandjaro [Tanzania, Kilimanjaro (1500 m)].

Current status

Junior synonym of *Monoxenus (Dityloderus) balteatus* (Aurivillius, 1903).

Dihammus marmoratus Breuning, 1936

Dihammus marmoratus Breuning, 1936a: 292 (not Fisher, 1935).

Dihammus pseudomarmoratus Breuning, 1944: 487 (nom. nov.).

Acalolepta pseudomarmorata Breuning, 1961b: 377.

Type status

Holotype.

Type locality

Neu-Guinea, Astrolabe Bai [Papua New Guinea, Madang Province, Astrolabe Bay].

Current status

Valid species, currently under the combination *Acalolepta pseudomarmorata* (Breuning, 1944).

Dihammus philippinensis Breuning, 1935

Dihammus luzonicus Breuning, 1935a: 251.

Dihammus philippinensis Breuning, 1935: 252.

Acalolepta luzonica Breuning, 1961b: 373.

Type status

Holotype.

Type locality

Insel Masbate [Philippines, province Masbate].

Current status

Junior synonym of *Acalolepta luzonica* (Breuning, 1935).

Dihammus subtruncatus Breuning, 1938

Dihammus subtruncatus Breuning, 1938a: 186.

Acalolepta subtruncata – Breuning 1961b: 376 (catalogue). — Ślipiński & Escalona 2013: 83.

Type status

Holotype.

Type locality

Queensland [Australia, Queensland].

Current status

Valid species, currently under the name *Acalolepta (Acalolepta) subtruncata* (Breuning, 1938).

Dorcoeax ovalis Breuning, 1946

Dorcoeax ovalis Breuning, 1946: 153.

Type status

Holotype.

Type locality

Cameroun (Victoria, jardin botanique) [Cameroon, Limbe].

Current status

Valid species.

Epilystoides integripennis Breuning, 1942

Epilystoides integripennis Breuning, 1942a: 142.

Sybra integripennis Ślipiński & Escalona, 2013: 229.

Type status

Holotype.

Type locality

Queensland: Peak Downs [Australia, Queensland].

Current status

Valid species, currently under the name *Sybra integripennis* (Breuning, 1942).

Remarks

A paratype deposited at NHMB (ex museum G. Frey) (Breuning, 1965: 504).

Epuraecha ochraceomaculata Breuning, 1935

Epuraecha ochraceomaculata Breuning, 1935c: 257

Type status

Holotype.

Type locality

Tonkin, Mt Mauson [Vietnam, Tonkin].

Current status

Valid species.

Estoloides (Parestoloides) costaricensis Breuning, 1940

Estoloides (Parestoloides) costaricensis Breuning, 1940a: 76

Estoloides costaricensis Santos-Silva *et al.*, 2018: 453

Type status

Holotype.

Type locality

Costa Rica: San José.

Current status

Valid species.

Eupogonius microphthalmus Breuning, 1943

Eupogonius microphthalmus Breuning, 1943: 49

Type status

Holotype.

Type locality

Brasilien: Porto Alegre [Brazil, Porto Alegre].

Current status

Valid species.

Falsepilysta albostictica Breuning, 1939

Falsepilysta albostictica Breuning, 1939a: 242.

Type status

Holotype.

Type locality

Philippinen: Insel Luzon, Benguet, Bagnio [Philippines, Luzon].

Current status

Valid species.

Falsocularia annulicornis Breuning, 1942

Falsocularia annulicornis Breuning, 1942b: 148.

Type status

Holotype.

Type locality

Cameroun: Mundame, Mukonje Farm [Cameroon, Mundame].

Current status

Valid species.

Glenea (Glenea) subbasalis Breuning, 1956

Glenea (Glenea) subbasalis Breuning, 1956: 822.

Type status

Holotype (♂).

Type locality

Celebes [Indonesia, Sulawesi].

Current status

Valid species.

Glenea (Glenea) subhuonora Breuning, 1956

Glenea (Glenea) subhuonora Breuning, 1956: 133.

Type status

Holotype (♀).

Type locality

Nord-Nias: Hili Medjeda [Indonesia, Sumatra, Nias].

Current status

Valid species.

Remarks

A paratype deposited at NHMB (former museum G. Frey).

Glenea (Glenea) violaceomicans Breuning, 1958

Glenea (Glenea) violaceomicans Breuning, 1958: 254.

Type status

Holotype.

Type locality

Celebes [Indonesia, Sulawesi].

Current status

Valid species.

Hoplocris griseovittatus Breuning, 1940

Hoplocris griseovittatus Breuning, 1940b: 135.

Paradocus griseovittatus Breuning, 1950a: 282.

Type status

Holotype (♀).

Type locality

Tanganjika Territorium: Manjani [Tanzania, Muheza District].

Current status

Valid species, currently under the combination *Paradocus griseovittatus* (Breuning, 1940).

Idactus damarensis Breuning, 1938

Idactus damarensis Breuning, 1938a: 215.

Idactus ellioti damarensis Teocchi *et al.*, 2015: 25.

Type status

Holotype (♂).

Type locality

SW Africa: Amaruru [Namibia, Omaruru].

Current status

Valid subspecies of *Idactus ellioti* Gahan, 1890.

Itheum fuscoantennale Breuning, 1943

Itheum fuscoantennale Breuning, 1943: 63.

Type status

Holotype.

Type locality

Neu-Süd-Wales. Rockhampton [Australia, Queensland, Rockhampton].

Current status

Valid species.

Lamia adusta Wiedemann, 1819

Lamia adusta Wiedemann, 1819: 182.

Xylorhiza adusta Dejean, 1835: 344.

Type status

Holotype.

Type locality

Bengalia [India, Bengali].

Current status

Valid species, currently under the combination *Xylorhiza adusta* (Wiedemann, 1819).

***Lamia crassipes* Wiedemann, 1823**

Lamia crassipes Wiedemann, 1823: 111.

Praonetha crassipes Dejean, 1835: 344.

Pterolophia crassipes Aurivillius, 1922: 253.

Type status

Holotype.

Type locality

Java [Indonesia, Java].

Current status

Valid species, currently under the combination *Pterolophia crassipes* (Wiedemann, 1823).

***Linda (Linda) annamensis* Breuning, 1954**

Linda (Linda) annamensis Breuning, 1954: 556.

Type status

Holotype (♀).

Type locality

Annam: Caleu [Vietnam, Annam].

Current status

Valid species.

***Mimoopsis crassepuncta* Breuning, 1942**

Mimoopsis crassepuncta Breuning, 1942a: 154.

Type status

Holotype.

Type locality

Insel Tahiti [Tahiti].

Current status

Valid species.

***Mimosybra basigranosa* Breuning, 1939**

Mimosybra basigranosa Breuning, 1939a: 279.

Type status

Holotype.

Type locality

Philippinen: Insel Luzon, Kayapo [Philippines, Luzon].

Current status

Valid species.

Mimosybra uniformis Breuning, 1940

Mimosybra uniformis Breuning, 1940b: 166.

Sybra gaindahensis Ślipiński & Escalona, 2013: 229 (nom. nov.).

Type status

Holotype.

Type locality

Australien: Gayndah [Australia, Queensland, Gayndah].

Current status

Valid species.

Remarks

Ślipiński & Escalona (2013), in their work regarding the fauna of Australian Lamiinae, synonymized *Mimosybra* Breuning, 1939 with *Sybra* Pascoe, 1865. Resulting from this synonymy, they had to propose a new name to avoid the secondary homonym with *Sybra uniformis* Breuning, 1939, described from the Fiji Islands. According to Weigel & Skale (2014: 222), Ślipiński & Escalona (2013) did not compare the type species of the two genera, and hence, Weigel & Skale (2014) did not agree with the synonymy and reinstated the genus *Mimosybra*. Thus, the replacement name proposed by Ślipiński & Escalona (2013: 229) becomes obsolete.

Mispilopsis luzonica Breuning, 1938

Mispilopsis luzonica Breuning, 1938a: 381.

Type status

Holotype.

Type locality

Luzon: Rizal [Philippines, Province of Rizal].

Current status

Valid species.

Monochamus unifasciatus Breuning, 1935

Monochamus unifasciatus Breuning, 1935c: 251.

Monochamus latefasciatus Breuning, 1944: 435 (nom. nov.).

Type status

Holotype (♂).

Type locality

Tonkin, Mt Mauson [Vietnam, Tonkin].

Current status

Valid species, currently under the name *Monochamus latefasciatus* Breuning, 1944

Remarks

Monochamus unifasciatus Breuning, 1935 is preoccupied by *Monohammus galloprovincialis* v. *unifasciatus* Pic, 1905 [invalid variety of *Monochamus galloprovincialis* (Olivier, 1800)]. Hence Breuning (1944) proposed the replacement name *Monochamus latefasciatus* Breuning, 1944.

Neoopsis quadrimaculatus Breuning, 1942

Hestimidius humeralis – Breuning 1939a: 285. — Dillon & Dillon 1952: 64 (syn.).
Neoopsis quadrimaculatus – Breuning 1942a: 154.

Type status

Holotype.

Type locality

Fidji Inseln [Fiji].

Current status

Junior synonym of *Hestimidius humeralis* Breuning, 1939.

Niphona orientalis Breuning, 1938

Niphona orientalis Breuning, 1938a: 239.

Type status

Holotype.

Type locality

Tanganjika Territorium: Uhehe [Tanzania, Tanganyica].

Current status

Valid species.

Niphosoma compactum Breuning, 1943

Niphosoma compactum Breuning, 1943: 30.

Type status

Holotype.

Type locality

Britisch-Indien: Madras, Ramadroog [India, Tamil Nadu (800–1000 m)].

Current status

Valid species.

Paratucumaniella mexicana Breuning, 1943

Paratucumaniella mexicana Breuning, 1943: 42.

Cacostola mexicana Marinoni & Martins, 1982: 247.

Type status

Holotype.

Type locality

Jalapa [Mexico, Veracruz, Jalapa].

Current status

Valid species, currently under the combination *Cacostola mexicana* (Breuning, 1943).

Parestola hoegei Breuning, 1943

Parestola hoegei Breuning, 1943: 54.

Type status

Holotype.

Type locality

Mexiko [Mexico].

Current status

Valid species.

Pharsalia ochreostictica Breuning, 1938

Pharsalia ochreostictica Breuning, 1938a: 194.

Type status

Holotype (♂).

Type locality

Sumatra: Indragina, Somgei Lalah [Indonesia, Sumatra].

Current status

Valid species.

Phytoecia (Blepisanis) latesuturalis Breuning, 1951

Phytoecia (Blepisanis) latesuturalis Breuning, 1951: 430.

Type status

Holotype (♀).

Type locality

Territoire du Tanganjika: Mont Kilimandjaro [Tanzania, Mount Kilimanjaro].

Current status

Valid species.

Phytoecia (Blepisanis) pseudofervida Breuning, 1951

Phytoecia (Blepisanis) pseudofervida Breuning, 1951: 419.

Type status

Holotype (♂).

Type locality

Natal: Durban [South Africa, Natal, Durban].

Current status

Valid species.

Prosoplus bimaculicollis Breuning, 1943

Prosoplus trukensis Blair, 1940: 153.

Prosoplus bimaculicollis – Breuning 1943: 32. — Gressitt 1956: 133 (syn.).

Type status

Holotype.

Type locality

Ozeanien: Insel Ruk [Micronesia, Chuuk Lagoon].

Current status

Junior synonym of *Rhytiphora atlantica trukensis* (Blair, 1940).

Remarks

Ślipiński & Escalona (2013) proposed *Prosoplus* Blanchard, 1853, as junior synonym of *Rhytiphora* Audinet-Serville, 1835, with the consequent new combinations of its species.

Prosoplus brunneus Breuning, 1938

Prosoplus brunneus Breuning, 1938a: 353.

Type status

Holotype.

Type locality

Neu Britannien [Papua New Guinea, New Britain].

Current status

Valid species, currently under the combination *Rhytiphora brunnea* (Breuning, 1938).

Remarks

Ślipiński & Escalona (2013) proposed *Prosoplus* Blanchard, 1853, as junior synonym of *Rhytiphora* Audinet-Serville, 1835, with the consequent new combinations of its species.

Prosoplus metallescens Breuning, 1938

Prosoplus metallescens Breuning, 1938a: 352.

Rhytiphora metallescens Ślipiński & Escalona, 2013: 206.

Type status

Holotype (♂).

Type locality

Australien: Rockhampton [Australia, Queensland].

Current status

Valid species, currently under the combination *Rhytiphora metallescens* (Breuning, 1938).

Remarks

Ślipiński & Escalona (2013) proposed *Prosoplus* Blanchard, 1853, as junior synonym of *Rhytiphora* Audinet-Serville, 1835, with the consequent new combinations of its species.

Prosoplus rugulosus Breuning, 1938

Prosoplus rugulosus Breuning, 1938a: 353.

Type status

Holotype (♂).

Type locality

Neu Pommern, S. W. Küste, Siassi Archipel, Malabay [Papua New Guinea, New Britain].

Current status

Valid species, currently under the combination *Rhytiphora rugulosa* (Breuning, 1938).

Remarks

Ślipiński & Escalona (2013) proposed *Prosoplus* Blanchard, 1853, as junior synonym of *Rhytiphora* Audinet-Serville, 1835, with the consequent new combinations of its species.

Prosoplus rugosicollis Breuning, 1940

Prosoplus rugosicollis Breuning, 1940: 141.

Type status

Holotype (♂).

Type locality

Insel Palau [Micronesia, Caroline Islands].

Current status

Junior synonym of *Rhytiphora livida* (Matsushita, 1935).

Remarks

Ślipiński & Escalona (2013) proposed *Prosoplus* Blanchard, 1853, as junior synonym of *Rhytiphora* Audinet-Serville, 1835, with the consequent new combinations of its species.

Pseudodoliops griseus Breuning, 1938

Pseudodoliops griseus Breuning, 1938a: 237.

Type status

Holotype (♂).

Type locality

Luzon: Laguna, Paete [Philippines, Province of Laguna (Paete)].

Current status

Valid species.

Pseudoplanodes mediofasciatus Breuning, 1935

Planodes aurivilliusi Schwarzer, 1926: 12.

Pseudoplanodes mediofasciatus Breuning, 1935c: 258; 1939b: 461 (syn.).

Pseudoplanodes aurovilliusi Breuning, 1939b: 461 (misspelling).

Type status

Holotype (♀).

Type locality

Insel Mindano [Philippines, Mindanao].

Current status

Junior synonym of *Pseudoplanodes aurivilliusi* (Schwarzer, 1926).

Pterolophia australica Breuning, 1938

Pterolophia australica Breuning, 1938a: 326.

Pterolophia (Ale) australica Breuning, 1961a: 255 (catalogue).

Rhytiphora australica Ślipiński & Escalona, 2013: 200.

Type status

Holotype (♂).

Type locality

Queensland: Mulgrave River [Australia, Queensland].

Current status

Valid species, currently under the combination *Rhytiphora australica* (Breuning, 1938).

Remarks

Ślipiński & Escalona (2013: 200, fig. 196 E) incorrectly displayed a specimen as holotype.

***Pterolophia bilatevittata* Breuning, 1942**

Pterolophia bilatevittata Breuning, 1942a: 127.

Pterolophia (Ale) bilatevittata Breuning, 1961a: 254.

Type status

Holotype.

Type locality

China: Prov. Fokien [China, Fujien].

Current status

Valid species, currently known as *Pterolophia (Ale) bilatevittata* Breuning, 1942.

***Pterolophia crenatocristata* Breuning, 1938**

Pterolophia crenatocristata Breuning, 1938a: 327.

Pterolophia (Ale) crenatocristata Breuning, 1961a: 255.

Type status

Holotype (♂).

Type locality

Philippinen [Philippines].

Current status

Valid species, currently known as *Pterolophia (Ale) crenatocristata* Breuning, 1938.

***Pterolophia flavofasciata* Breuning, 1938**

Pterolophia flavofasciata Breuning, 1938a: 327.

Pterolophia (Pterolophia) flavofasciata Breuning, 1961: 241.

Type status

Holotype.

Type locality

Kamerun: Mukonje Farm bei Mundame [Cameroon, Mundame].

Current status

Valid species.

Pterolophia luzoncola Breuning, 1938

Pterolophia luzoncola Breuning, 1938a: 325.

Pterolophia (Pterolophia) luzoncola Breuning, 1961: 246.

Type status

Holotype (♂).

Type locality

Philippinen: Luzon, Ilacas Norte [Philippines, Luzon].

Current status

Valid species.

Pterolophia nivea Breuning, 1938

Pterolophia nivea Breuning, 1938a: 298.

Pterolophia (Chaetostigme) nivea Breuning, 1961a: 259.

Type status

Holotype.

Type locality

Queensland: Peak Downs [Australia, Queensland].

Current status

Valid species, currently known as *Pterolophia (Chaetostigme) nivea* Breuning, 1938.

Remarks

A specimen labelled as ‘Type’ by Breuning is in BMNH, but its data do not correspond to the holotype in the original description. It may be a paratype (M.V.L. Barclay pers. comm.).

Pterolophia speciosa Breuning, 1938

Pterolophia speciosa Breuning, 1938a: 326.

Pterolophia (Paramimoron) speciosa Breuning, 1961c: 258.

Type status

Holotype.

Type locality

Philippinen: Luzon, Rizal [Philippines, Rizal].

Current status

Valid species, currently known as *Pterolophia (Paramimoron) speciosa* Breuning, 1938.

***Pterolophia spinosa* Breuning, 1938**

Pterolophia spinosa Breuning, 1938a: 326.

Pterolophia (Ale) spinosa Breuning, 1961a: 255.

Type status

Holotype (♂).

Type locality

Philippinen: Luzon, Laguna, Paete [Philippines, Laguna, Paete].

Current status

Valid species, currently known as *Pterolophia (Ale) spinosa* Breuning, 1938.

***Rhodopsis tonkinensis* Breuning, 1936**

Rhodopsis tonkinensis Breuning, 1936a: 316.

Type status

Holotype (♀).

Type locality

Tonkin, Montes. Mauson [Vietnam, Tonkin].

Current status

Valid species, currently under the combination *Rhodopina tonkinensis* (Breuning, 1936).

Remarks

Rhodopsis was preoccupied [*Rhodopsis* Reichenbach, 1854 – Aves, Trochilidae]; Gressitt (1951) proposed the new name *Rhodopina*.

***Rhytiphora antennalis* Breuning, 1938**

Rhytiphora antennalis Breuning, 1938a: 366.

Type status

Holotype (♀).

Type locality

Queensland: Mulgrave River [Australia, Queensland].

Current status

Valid species.

***Saperda costata* Wiedemann, 1823**

Saperda 4-oculata Thunberg, 1787: 57.

Saperda costata Wiedemann, 1823: 112.

Type status

Holotype.

Type locality

Java [Indonesia, Java].

Current status

Junior synonym of *Nupserha quadrioculata* (Thunberg, 1787).

***Sophronica nigricollis* Breuning, 1943**

Sophronica nigricollis Breuning, 1943: 51 (not Breuning, 1940).

Sophronica nigriticollis Breuning, 1949: 23 (nom. nov.).

Type status

Holotype.

Type locality

Kamerun: Kamerunberg, Missellele [Cameroon, Fako, Missellele].

Current status

Valid species.

Remarks

Sophronica nigricollis Breuning, 1943 is a preoccupied name by *Sophronica nigricollis* Breuning, 1940: 177 (from Kenya).

***Sophroniella pusilla* Breuning, 1943**

Sophroniella pusilla Breuning, 1943: 51.

Type status

Holotype.

Type localities

Tshad-See: Papyrus-Gürtel [Chad, Lake Tchad].

Current status

Valid species, currently under the combination *Nyoma pusilla* (Breuning, 1943).

Remarks

Teocchi (1992: 14) synonymized *Sophroniella* Breuning, 1943 with *Nyoma* Duvivier, 1892, leading to this new combination never published before.

***Spinovelleda excavata* Breuning, 1942**

Spinovelleda excavata Breuning, 1942c: 135.

Type status

Holotype.

Type locality

Tanganyika: Amani [Tanzania].

Current status

Valid species.

Sybra apicespinosa Breuning, 1942

Sybra apicespinosa Breuning, 1942a: 143.

Type status

Holotype.

Type locality

Insel Ovalau [Fiji, Ovalau].

Current status

Valid species.

Sybra densemarmorata Breuning, 1942

Sybra densemarmorata Breuning, 1942a: 147.

Type status

Holotype.

Type locality

Insel Luzon [Philippines, Luzon].

Current status.

Valid species.

Sybra medioguttata Breuning, 1942

Sybra medioguttata Breuning, 1942a: 144.

Type status

Holotype.

Type localities

Queensland: Rockhampton [Australia, Queensland].

Current status

Valid species.

Sybra nigroobliquelineata Breuning, 1943

Sybra nigroobliquelineata Breuning, 1943: 44.

Type status

Holotype.

Type locality

Tonga Inseln [Tonga].

Current status

Valid species.

Sybra obliquemaculata Breuning, 1942

Sybra obliquemaculata Breuning, 1942a: 146.

Type status

Holotype.

Type locality

Insel Luzon: Kayapo [Philippines, Luzon].

Current status

Valid species.

Sybra ochreostictica Breuning, 1942

Sybra ochreostictica Breuning, 1942a: 146.

Type status

Holotype.

Type locality

Insel Luzon: Kayapo [Philippines, Luzon].

Current status

Valid species.

Sybra plurilineata Breuning, 1942

Sybra plurilineata Breuning, 1942a: 145.

Type status

Holotype.

Type locality

Neu-Guinea [New Guinea].

Current status

Valid species.

Sybra praemediomaculata Breuning, 1943

Sybra praemediomaculata Breuning, 1943: 44.

Type status

Holotype.

Type locality

Insel Luzon: Mt Banahao [Philippines, Calabarzon, Laguna].

Current status

Valid species.

Sybra quinquevittata Breuning, 1942

Sybra quinquevittata Breuning, 1942a: 149.

Type status

Holotype.

Type locality

Borneo.

Current status

Valid species.

Taeniotes affinis Breuning, 1935

Taeniotes affinis Breuning, 1935b: 62.

Type status

Holotype.

Type locality

Peru: Chanchamayo [Peru, Junín, Chanchamayo].

Remarks

Paratypes from Ecuador (Bolívar): Balzapamba, S.R. Haensch leg. n° 41377 deposited at USNM (ex F. Tippmann collection).

Current status

Valid species.

Tetroropsis ciliata Breuning, 1940

Tetroropsis ciliata Breuning, 1940a: 78.

Type status

Holotype.

Type locality

Neu-Süd-Wales: Tweed River [Australia, New South Wales].

Current status

Valid species.

Thercladodes ochripennis Breuning, 1940

Thercladodes ochripennis Breuning, 1940b: 151.

Cloniocerus ochripennis Breuning, 1950c: 415.

Type status

Holotype.

Type locality

Tanganjika Territorium: Usambara Gebirge [Tanzania, Tanganjika, Usambara (1600 m)].

Current status

Valid species; currently under the combination *Cloniocerus ochripennis* (Breuning, 1940).

Tragiscoschema elegantissimum Breuning, 1934

Tragiscoschema elegantissimum – Breuning 1934: 20. — Teocchi & Sudre 2003: 1 (neotype).

Type status

Holotype (♀).

Type locality

Territoire du Tanganyika [Tanzania, Tanganjika].

Current status

Valid species.

Remarks

Téocchi & Sudre (2003) designated a neotype from Kenya (Voi env. & Sagala Hills, Coastal prov., 23 Nov.–4 Dec. 2000, Michal Bednarik leg.). The neotype is deposited at E. Jiroux-J. Ph. Legrand Collection (Andrésey, France).

Tragocephala gracillima Breuning, 1934

Tragocephala gracillima Breuning, 1934: 70.

Type status

Holotype (♀).

Type locality

Congo Belge: District de l'Oubangui (Duma) [D.R. Congo].

Current status

Valid species.

Tragon pulcher Breuning, 1942

Tragon pulcher Breuning, 1942b: 146.

Type status

Holotype.

Type locality

Cameroun: Mundame, Mukonje Farm [Cameroon, Mundame].

Current status

Valid species.

Trichoparmenonta hoegei Breuning, 1943

Trichoparmenonta Högei Breuning, 1943: 36.

Trichoparmenonta hoegei Breuning, 1971: 322 (emendation).

Type status

Holotype.

Type locality

Sud-Mexico [Mexico].

Current status

Valid species.

Zaeroides luzonica Breuning, 1938

Zaeroides luzonica Breuning, 1938a: 347.

Type status

Holotype (♀).

Type locality

Luzon: Laguna [Philippines, Luzon, Laguna].

Current status

Valid species.

Zaeropsis godeffroyi Breuning, 1943

Zaeropsis godeffroyi Breuning, 1943: 30.

Rhytiphora godeffroyi Ślipiński & Escalona, 2013: 204.

Type status

Holotype.

Type locality

Australien: Gayndah [Australia, Queensland].

Current status

Valid species, known as *Rhytiphora godeffroyi* (Breuning, 1943).

Subfamily Prioninae Latreille, 1802

Opheltes cariosicollis Fairmaire, 1877

Opheltes cariosicollis Fairmaire, 1877: 167.

Stenodontes (Nothopleurus) cariosicollis Lameere, 1902: 96.

Nothopleurus cariosicollis Dillon & Dillon, 1952: 4.

Olethrius cariosicollis Santos-Silva *et al.*, 2010: 7.

Type status

Syntypes, (1 ♂, 1 ♀).

Type locality

Kadavu, Viti Inseln [Fiji].

Current status

Valid species, currently under the combination *Olethrius cariosicollis* (Fairmaire, 1877).

Remarks

Another syntype may be present at MNHN (ex collection Fairmaire).

Rhaphipodus gahani Lameere, 1903

Rhaphipodus (Rhaphipodus) Gahani Lameere, 1903: 72.

Type status

Holotype (♂).

Type locality

Nord de l'Inde, Darjeeling [India; West Bengal, Darjeeling].

Current status

Valid species.

Name published at subspecific rank

Subfamily Lamiinae Latreille, 1825

Megalofrea bioculata var. *breuningi* Lepesme & Villiers, 1944
Figs 21–22

Megalofrea bioculata var. *breuningi* Lepesme & Villiers, 1944: 74.

Syntype

MADAGASCAR • 4 exs; “Maroentsetra / Madagascar // *Megalofrea* / *bioculata* Frm. / v. *Breuningi* / Lep. et. Vill. / P. Lepesme det. // COTYPE // Sammlung / P. Lepesme / Eing. Nr. 2, 1949 // ZMH 824653”; ZMH 824653.

Type locality

Tananarive and Maroentsétra, Madagascar.

Current status

Synonym of *Megalofrea bioculata* (Fairmaire, 1889).

Remarks

Available name as subspecies of *Megalofrea bioculata* (Fairmaire, 1889). The original description lists two syntypes from Tananarive deposited at the MNHN and one from Maroentsetra in the collection of Lepesme (cited above). Three more specimens labelled as cotypes in the ZMH (one from Tananarive, two from Maroentsetra) do not belong to the type series since they do not correspond to the number of specimens cited in the description and do not bear original type labels.

Names published at infrasubspecific rank

Subfamily Lamiinae Latreille, 1825

Ceroplesis sumptuosa m. *reducta* Breuning, 1937

Ceroplesis sumptuosa Pascoe, 1875: 66.

Ceroplesis sumptuosa m. *reducta* – Breuning 1937: 252.

Type status

Holotype (♀).

Type locality

Transvaal: Pretoria [South Africa, Province of Transvaal].

Current status

Unavailable name. Morph described by Breuning currently deemed an intraspecific variation of *Ceroplesis sumptuosa* Pascoe, 1875.

Microtragus arachne m. *obscurus* Breuning, 1950

Microtragus arachne Pascoe, 1865: 361.

Microtragus arachne m. *obscurus* Breuning, 1950b: 123.

Type status

Holotype.

Type locality

Australia (Queensland), Peak Downs.

Current status

Unavailable name. Morph described by Breuning currently deemed an intraspecific variation of *Microtragus arachne* Pascoe, 1865.

Olenecamptus siamensis m. *reducta* Breuning, 1940

Olenecamptus siamensis Breuning, 1936a: 319.

Olenecamptus siamensis m. *reducta* Breuning, 1940c: 549.

Type status

Holotype.

Type locality

Sumatra [Indonesia, Sumatra].

Current status

Unavailable name. Morph described by Breuning currently deemed an intraspecific variation of *Olenecamptus siamensis* Breuning, 1936.

Prosopocera (Alphitopola) aemilii ab. *albida* Breuning, 1936

Prosopocera aemilii Aurivillius, 1907: 112.

Prosopocera (Alphitopola) aemilii ab. *albida* Breuning, 1936b: 197.

Type status

Holotype (♂).

Type locality

Cameroun: Mundame [Cameroon, Mundame].

Current status

Unavailable name. Aberration described by Breuning, currently deemed an intraspecific variation of *Prosopocera (Alphitopola) aemilii* Aurivillius, 1907.

Discussion

As a result of the re-curation of the longhorn beetle collection of the ZMH, we could identify and assess the validity of the type-material deposited at the ZMH. In summary, in the ZMH collection, there is one primary-type (holotype) and secondary-types of eight specific names. Additionally, we note that most primary types, originally deposited in the collection, were likely destroyed during the Second World War, including types of 103 names. We hope that this catalog helps to establish the basis for further research, and update the knowledge regarding this important material.

Acknowledgments

We would like to thank Thure Dalsgaard and Birgit Jaenicke for helping on the organization and generating the images used in this manuscript, and to Max Barclay (BMNH) and two anonymous reviewers for their suggestions and comments.

References

- Adlbauer K. & Beck R. 2015. *Katalog und Fotoatlas der Bockkäfer Äthiopiens (Coleoptera, Cerambycidae)*. Taita Publishers, Czech Republic. <https://doi.org/10.5962/bhl.part.19774>
- Aurivillius C. 1903. Neue oder wenig bekannte Coleoptera Longicornia. 8. *Arkiv för Zoologi* 1: 313–328.
- Aurivillius C. 1907. Neue oder wenig bekannte Coleoptera Longicornia. 9. *Arkiv för Zoologi* 3 (18): 93–131.
- Aurivillius C. 1911. Neue oder wenig bekannte Coleoptera Longicornia. 12. *Arkiv för Zoologi* 7 (19): 187–228.
- Aurivillius C. 1912. *Cerambycidae: Cerambycinae Coleopterorum Catalogus Pars 39* [vol. 22]: 1–574. W. Junk & S. Schenkling, Berlin.
- Aurivillius C. 1922. *Coleopterorum Catalogus, pars 73, Cerambycidae: Lamiinae*. W. Junk, Berlin.
- Blair K.G. 1940. Coleoptera from the Caroline Islands. *Occasional Papers of Bernice Pauahi Bishop Museum, Honolulu* 16 (6): 131–157.
- Botero J.P & Monné M.L. 2012. Revision of the genus *Andraegoidus* Aurivillius (Insecta: Coleoptera: Cerambycidae). *Zootaxa* 3169: 1–60. <https://doi.org/10.11646/zootaxa.3169.1.1>
- Breuning S. 1934. Études sur les Lamiaires (Coléop. Cerambycidae). Première Tribu: Tragocephalini Thomson. *Novitates Entomologicae, 3^{ème} supplément* (1–4 & 5–13) 1934–1935: 8–98.
- Breuning S. 1935a. Novae species Cerambycidarum. II. *Folia Zoologica et Hydrobiologica* 7 (2): 241–254.
- Breuning S. 1935b. Novae species Cerambycidarum. III. *Folia Zoologica et Hydrobiologica* 8: 51–71.
- Breuning S. 1935c. Novae species Cerambycidarum. IV. *Folia Zoologica et Hydrobiologica* 8 (2): 251–276.
- Breuning S. 1936a. Novae species Cerambycidarum. V. *Festschrift zum 60. Geburtstag von Professor Dr. Embrik Strand* 1: 274–325.
- Breuning S. 1936b. Études sur les Lamiaires (Coléop. Cerambycidae). Troisième Tribu: Prosopocerini Thomson. *Novitates Entomologicae, 3^{ème} supplément* (21–29): 157–230.
- Breuning S. 1937. Études sur les Lamiaires (Coléop. Cerambycidae). Quatrième Tribu: Ceroplesini Thomson. *Novitates Entomologicae, 3^{ème} supplément* (30–34): 231–270.
- Breuning S. 1938a. Novae species Cerambycidarum VI. *Festschrift zum 60. Geburtstag von Professor Dr. Embrik Strand* 4: 180–392.
- Breuning S. 1938b. Nouveaux Cerambycidae (Col.). *Novitates Entomologicae* 9: 30–63.
- Breuning S. 1938c. Longicorni (Lamiinae) della Somalia raccolti dal Maggiore Cesare Lomi durante la campagna Etiopica. *Atti del Museo Civico di Storia Naturale di Trieste* 14 (6): 107–123.
- Breuning S. 1939a. Novae species Cerambycidarum VII. *Festschrift zum 60. Geburtstag von Professor Dr. Embrik Strand* 5: 144–290.

- Breuning S. 1939b. Études sur les Lamiaires (Coléop. Cerambycidae). Huitième tribu: Mesosini Thomson. *Novitates Entomologicae*, 3^{ème} supplément (50–66): 393–526.
- Breuning S. 1940a. Novae species Cerambycidarum VIII. *Folia Zoologica et Hydrobiologica* 10 (1): 37–85.
- Breuning S. 1940b. Novae species Cerambycidarum. IX. *Folia Zoologica et Hydrobiologica* 10 (1): 115–214.
- Breuning S. 1940c. Études sur les Lamiaires (Coléop. Cerambycidae). Neuvième Tribu: Dorcaschematini Thoms. *Novitates Entomologicae*, 3^{ème} supplément (67–71): 527–568.
- Breuning S. 1942a. Novae species Cerambycidarum XI. *Folia Zoologica et Hydrobiologica* 11: 113–175.
- Breuning S. 1942b. Nouveaux Cerambycidae (3^e note). *Novitates Entomologicae* 12 (19): 142–148.
- Breuning S. 1942c. Études sur les Lamiaires (Coleop. Cerambycidae). Onzième tribu: Phrissomini Lac. *Novitates Entomologicae*, 3^{ème} supplément (84–88): 102–136.
- Breuning S. 1943. Novae species Cerambycidarum XII. *Folia Zoologica et Hydrobiologica* 12: 12–66.
- Breuning S. 1944. Études sur les Lamiaires (Coleop. Cerambycidae). Douzième tribu: Agniini Thomson. *Novitates Entomologicae*, 3^{ème} supplément (107–135): 281–512.
- Breuning S. 1946. Nouveaux Cerambycidae (Col.) (4^e note). *Novitates Entomologicae* 16: 152–153.
- Breuning S. 1949. Notes systématiques sur les Lamiaires (Coleoptera Cerambycidae). *Bulletin de l'Institut Royal des Sciences Naturelles de Belgique* 25 (38): 1–32.
- Breuning S. 1950a. Révision des “Theocridini”. *Longicornia* I: 279–303.
- Breuning S. 1950b Révision des “Parmenini”. *Longicornia* I: 29–159.
- Breuning S. 1950c. Révision des “Cloniocerini”. *Longicornia* I: 415–421.
- Breuning S. 1951. Revision du genre *Phytoecia* Muls. (Col. Cerambycidae). *Entomologische Arbeiten aus dem Museum G. Frey, Tutzing bei München* 2 (2): 353–460.
- Breuning S. 1954. Revision von 35 Gattungen aus der Gruppe der Saperdini Muls. (Col. Cerambycidae). *Entomologische Arbeiten aus dem Museum G. Frey, Tutzing bei München* 5 (2): 401–567.
- Breuning S. 1956. Revision der Gattung *Glenea* Newm. (1. Fortsetzung). *Entomologische Arbeiten aus dem Museum G. Frey, Tutzing bei München* 7 (2): 671–893.
- Breuning S. 1958. Revision der Gattung *Glenea* Newm. (Col. Ceramb.) (2. Fortsetzung). *Entomologische Arbeiten aus dem Museum G. Frey, Tutzing bei München* 9 (1): 229–35.
- Breuning S. 1961a. Catalogue des Lamiaires du Monde (Col. Céramb.). *Verlag des Museums G. Frey, Tutzing bei München* 4: 183–284.
- Breuning S. 1961b. Catalogue des Lamiaires du Monde (Col., Cerambycidae). 5. Lief. *Museum G. Frey, Tutzing bei München*, p. 287–382. <https://doi.org/10.1080/00222936208651240>
- Breuning S. 1961c. Nouveaux Cerambycidae des Collections du Muséum de Paris. *Bulletin du Muséum National d'Histoire Naturelle de Paris* (2^{ème} série) 32 (6): 536–548.
- Breuning S. 1971. Révision des espèces américaines de la tribu des Apomecynini Lac. (Coleoptera, Cerambycidae). *Abhandlungen und Berichte aus dem staatlichen Museum für Tierkunde in Dresden* 37 (3): 209–335.

- Carter H.J. 1930. New Guinea and Australian Coleoptera. Notes and new species. *The Proceedings of the Linnean Society of New South Wales* 55 (5) 231: 532–549.
- Clarke R.O.S. 2015. Revision of the genus *Acyphoderes* Audinet-Serville, 1833, with a brief synopsis of the genus *Bromiades* Thomson, 1864 (Coleoptera, Cerambycidae). *Insecta Mundi* 041: 1–92.
- Dejean P.F.M.A. 1835. *Catalogue des Coléoptères de la Collection de M. le Comte Dejean*. Crevot, Paris.
- Dey L-S. & Husemann M. 2018a. An annotated catalogue of the types of bush-crickets and crickets (Orthoptera, Ensifera) housed in the Zoological Museum Hamburg (ZMH). *Evolutionary Systematics* 2: 115–124. <https://doi.org/10.3897/evolsyst.2.27030>
- Dey L-S & Husemann M. 2018b. An annotated catalogue of the types of short-horned grasshoppers (Orthoptera, Caelifera) housed in the Zoological Museum Hamburg (ZMH). *Evolutionary Systematics* 2: 21–30. <https://doi.org/10.3897/evolsyst.2.22127>
- Dillon L.S. & Dillon E.S. (1952) Cerambycidae of the Fiji Islands. *Bernice Pauahi Bishop Museum Bulletin* 206: 1–114.
- Evenhuis N.L. 2014. Abbreviations for insect and spider collections of the world. Available from hbs.bishopmuseum.org/codens/codens-inst.html [accessed 30 August 2022].
- Fairmaire L.M.H. 1877. Diagnoses de Coléoptères Australiens et Mélanésiens. *Petites Nouvelles Entomologiques* 9 (2) 180: 167.
- Fairmaire L. 1883. Essai sur les Coléoptères de l'Archipel de la Nouvelle-Bretagne. *Annales de la Société Entomologique de Belgique* 27: 1–58.
- Fairmaire L. 1884. *Diagnoses de Coléoptères de l'Afrique Orientale* (Suite). Comptes-Rendus des Séances de la Société Entomologique de Belgique, Bruxelles.
- Gerstaecker C.E.A. 1884. Bestimmung der von Herrn Dr. G. A. Fischer während seiner Reise nach dem Massai-Land gesammelten Coleopteren. *Jahrbuch der hamburgischen wissenschaftlichen Anstalten* 1: 41–63.
- Gounelle E. 1913. Cérambycides nouveaux de Colombie, appartenant au Musée de Hambourg (Col.). 1^{ère} note. *Bulletin de la Société Entomologique de France* 1913: 386–390. <https://doi.org/10.3406/bsef.1913.25403>
- Gressitt J.L. 1956. Coleoptera: Cerambycidae. *Insects of Micronesia* 17 (2): 61–183.
- Gressitt J.L. 1951. *Longicorn Beetles of China*. Longicornia, Paris.
- Henningsen M., Peitzner G., Peitzner P. & Husemann M. 2020. An updated checklist of the type material of dragonflies and damselflies (Odonata) housed in the Zoological Museum Hamburg (ZMH), Germany. *Evolutionary Systematics* 4: 53–60. <https://doi.org/10.3897/evolsyst.4.48407>
- Hüdepohl K.E. 1985. Revision der Untergattung *Agelasta* Newman s. str. (Coleoptera, Cerambycidae, Lamiinae, Mesosini) *Entomologische Arbeiten aus dem Museum G. Frey, Tutzing bei München* 33/34: 349–379.
- ICZN 1999. International Code of Zoological Nomenclature. 4th Edition. *The International Trust for Zoological Nomenclature*. London, UK. Available from <http://iczn.org> [accessed March 2019].
- Instituto Geografico Agustin Codazzi (IGAC). (1996) *Diccionario Geográfico de Colombia. Tercera Edición. Tomo 2*. Horizonte Impresores Ltda. Santafé de Bogotá, D.C.
- Juhel P. 2017. Vingt-quatrième contribution à l'étude des Callichromatini africains: révision du Genre *Oxyprosopus* Thomson, 1864 (Cerambycidae, Cerambycinae). *Les Cahiers Magellanes* (NS) 27: 82–115.

- Lameere A.A.L. 1902. Révision des Prionides. Quatrième Mémoire – Sténodontines. *Mémoires de la Société Entomologique de Belgique* 9: 63–111.
- Lameere A.A.L. 1903. Révision des Prionides. Septième mémoire. – Macrotomines. *Mémoires de la Société Entomologique de Belgique* 11: 1–216.
- Lameere A.A.L. 1906. Révision des Prionides. Onzième mémoire. – Hoploderes. *Annales de la Société Entomologique de Belgique* 49 (12): 361–367.
- Lepesme P. 1943. Un remarquable cérambycide nouveau de Guyane. *Revue Française d'Entomologie* 9: 135–137. <https://doi.org/10.3406/bsef.1944.15765>
- Le Moult E. 1938. Description de deux nouvelles espèces de Cerambycidae (Col.). *Novitates Entomologicae* 8: 30.
- Le Moult E. 1939. Quelques formes nouvelles ou peu connues du genre *Zoographus* (Coleop., Ceramb., Lamiinae) (1^{ère} note). *Novitates Entomologicae* 12: 92–95.
- Lepesme P. & Villiers A. 1944. Note sur quelques Crossotini malgaches [Col. Cerambycidae]. *Bulletin de la Société Entomologique de France* 49: 74–79.
- Marinoni R.C. & Martins U.R. 1982. Notas e descrições em *Cacostola* Fairm. & Germ., 1859 (Onciderini, Lamiinae, Cerambycidae, Coleoptera). *Revista Brasileira de Entomologia* 26 (3–4): 247–251.
- Melzer J. 1931. Longicórneos americanos, principalmente do Brasil, novos ou pouco conhecidos (Coleoptera, Cerambycidae). *Archivos do Instituto Biológico* 4: 51–82.
- Monné M.A. 2006. Catalogue of the Cerambycidae (Coleoptera) of the Neotropical Region. Part III. Subfamilies Parandrinae, Prioninae, Anoplodermatinae, Aseminae, Spondylidinae, Lepturinae, Oxypeltinae, and addenda to the Cerambycinae and Lamiinae. *Zootaxa* 1212: 1–244. <https://doi.org/10.11646/zootaxa.1212.1.1>
- Monné M.A. 2022a. Catalogue of the Cerambycidae (Coleoptera) of the Neotropical Region. Part I. Subfamily Cerambycinae. Available from: <https://cerambycids.com/catalog/> [accessed 17 May 2022].
- Monné M.A. 2022b. Catalogue of the Cerambycidae (Coleoptera) of the Neotropical Region. Part II. Subfamily Lamiinae. Available from: <https://cerambycids.com/catalog/> [accessed 17 May 2022].
- Monné M.A. 2022c. Catalogue of the Cerambycidae (Coleoptera) of the Neotropical Region. Part III. Subfamilies Lepturinae, Necydalinae, Parandrinae, Spondylidinae and families Oxypeltidae, Vesperidae and Disteniidae. Available from: <https://cerambycids.com/catalog/> [accessed 17 May 2022].
- Monné M.A. & Giesbert E.F. 1992. Nomenclatural notes on Western Hemisphere Cerambycidae (Coleoptera). *Insecta Mundi* 6 (2): 249–255.
- Pascoe F.P. 1865. A second series of descriptions of New Australian Longicornia. *The Journal of Entomology* 2 (12): 352–374.
- Pascoe F.P. 1875. Notes on Coleoptera, with descriptions of new genera and species. – Part III. *The Annals and Magazine of Natural History* 15 (4): 59–73. <https://doi.org/10.1080/00222937508681025>
- Peña L.E. 1974. Algunas observaciones sobre especies poco conocidas de Cerambycidae (Coleoptera) II. Nuevas distribuciones, sinónimas, etc. *Boletín de la Sociedad de Biología de Concepción* 47: 303–306.
- Podany C. 1965. Remarques sur les Callichromini américains (Col., Ceramb.). *Bulletin de la Société Entomologique de Mulhouse* 1965: 34–41.
- Santos-Silva A., Swift I.P. & Nearn E.H. 2010. Division of the genus *Nothopleurus* Lacordaire, 1869 (Coleoptera: Cerambycidae: Prioninae). *Zootaxa* 2643: 1–44. <https://doi.org/10.11646/zootaxa.2643.1.1>

- Santos-Silva A., Wappes J.E. & Galileo M.H.M. 2018. Descriptions and synonymies in American Desmiphorini (Coleoptera, Cerambycidae, Lamiinae). *Zootaxa* 4375 (4): 451–501. <https://doi.org/10.11646/zootaxa.4375.4.1>
- Sartori M., Kubiak M. & Rajaei S. 2016. An updated list of type material of Ephemeroptera Hyatt & Arms, 1890, deposited at the Zoological Museum of Hamburg (ZMH). *ZooKeys* 607: 49–68. <https://doi.org/10.3897/zookeys.607.9391>
- Schmidt M. 1922. Die afrikanischen Callichrominen (Col. Ceramb.) nach systematischen, phylogenetischen und geographischen Gesichtspunkten. *Archiv für Naturgeschichte* 88 (6): 61–232.
- Schmidt M. 1924. Die amerikanischen Callichrominen (Col., Ceramb.) nach systematischen und phylogenetischen Gesichtspunkten dargestellt. *Deutsche Entomologische Zeitschrift* 1924: 297–321; 377–396. <https://doi.org/10.1002/mmnd.48019240502>
- Schwarzer B. 1926. Beiträge zur Kenntnis der Cerambyciden (Col.). *Entomologische Mitteilungen, Berlin* 15 (1): 6–14.
- Simões M.V., Husemann M. & Sekerka L. 2021. A catalog of the Tortoise Beetle (Coleoptera: Chrysomelidae: Cassidinae) collection deposited in the Zoological Museum Hamburg (ZMH). *The Coleopterists Bulletin* 75 (1): 191–210. <https://doi.org/10.1649/0010-065X-75.1.191>
- Ślipiński S.A. & Escalona H.E. 2013. *Australian Longhorn Beetles (Coleoptera: Cerambycidae) Volume 1, Introduction and Subfamily Lamiinae*. Csiro publishing, Australia. <https://doi.org/10.1071/9781486300044>
- Tavakilian G. & Chevillotte H. 2022. Titan: base de données internationales sur les Cerambycidae ou Longicornes. Version 3.0. Available from <http://titan.gbif.fr/> [accessed 30 Aug. 2022].
- Teocchi P. 1992. Diagnoses de Lamiaires africains nouveaux, synonymies et bionomie de quelques autres (Coleoptera Cerambycidae). *Bulletin de la Société Sciences Nat* 72 [1991]: 9–16.
- Teocchi P., Jiroux E & Sudre J. 2004. Synonymies, diagnoses et bionomie de quelques Cerambycidae africains (10^{ème} note) 1ère partie (Coleoptera, Cerambycidae). *Les Cahiers Magellanes* 38: 1–30.
- Teocchi P. & Sudre J. 2003. Synonymies, diagnoses et bionomie de quelques lamiaires africains (9^e note) (Coleoptera, Cerambycidae, Lamiinae). *Les Cahiers Magellanes* 20: 1–27.
- Teocchi P., Sudre J. & Jiroux E. 2015. Synonymies, diagnoses et bionomie de quelques Lamiaires africains, 22^e note, 2^e partie (Coleoptera, Cerambycidae, Lamiinae). *Les Cahiers Magellanes (NS)* 19: 15–40.
- Thomson J. 1861. *Essai d'une Classification de la Famille des Cérambycides et Matériaux pour Servir à une Monographie de Cette Famille*. Bouchard-Huzard, Paris. <https://doi.org/10.5962/bhl.title.9206>
- Thunberg C.P. 1787. *Museum Naturalium Academiae Upsaliensis. Dissertatio entomologica novas insectorum species, sistens. Cujus Partem Qvartam. Consensu Exp. Fac. Med. Upsal. Praeside Carol. Pet. Thunberg, Publico examinit subjicit, Petrus a Bjerkén*. Johannes Edman, Uppsala 4: 43–58.
- Tippmann F.F. 1939. Eine neue *Cyclopeplus*-Art aus Peru. (Coleoptera, Cerambycidae, Lamiinae.). *Časopis České Společnosti Entomologické* 36 (2): 77.
- Villiers A. 1939. Un nouveau *Leucographus* de Madagascar. [Col. Cerambycidae]. *Bulletin de la Société Entomologique de France* 44 (15–16): 206–208. <https://doi.org/10.3406/bsef.1939.15405>
- Wappes J.E. & Santos-Silva A. 2021. Descriptions, transference, notes and designation of lectotype in Rhinotrugini (Coleoptera, Cerambycidae, Cerambycinae). *Faunitaxys* 9 (3): 1–12.

- Weidner H. 1976. Die Entomologischen Sammlungen des Zoologischen Instituts und Zoologischen Museums der Universität Hamburg, IX. Insecta VI. *Mitteilungen aus dem Hamburgischen Zoologischen Museum und Institut* 73: 87–264.
- Weidner H. 1979. Die Entomologischen Sammlungen des Zoologischen Instituts und Zoologischen Museums der Universität Hamburg, XIII. Insecta X. *Mitteilungen aus dem Zoologischen Staatsinstitut und Zoologischen Museum in Hamburg* 76: 395–468.
- Weigel A. & Skale A. 2014. On the taxonomy, synonymy and faunistics of the Apomecynini of the Asian-Australian Region (Insecta: Coleoptera: Cerambycidae: Lamiinae). Part 5: Nomenclatural corrections. *Vernate* 33: 221–223.
- White A. 1853. *Catalogue of the Coleopterous Insects in the Collection of the British Museum. Longicornia I*. British Museum, London.
- Wiedemann C.R.W. 1819. Neue Käfer aus Bengalen und Java. *Zoologisches Magazin* 1 (3): 157–183.
- Wiedemann C.R.W. 1821. Neue exotische Käfer beschrieben von C. R. W. Wiedemann und E. F. Germar. *Magazin der Entomologie* 4: 107–183.
- Wiedemann C.R.W. 1823. Zweihundert neue Käfer von Java, Bengalen und dem Vorgebirge der guten Hoffnung. *Zoologisches Magazin* 2 (1): 1–133.
- Zahiri R., Tarmann G., Efetov K.A., Rajaei H., Fatahi M. & Husemann M. 2021. An illustrated catalogue of the type specimens of Lepidoptera (Insecta) housed in the Zoological Museum Hamburg (ZMH): Part I. superfamilies Hepialoidea, Cossioidea, and Zygaenoidea. *Evolutionary Systematics* 5: 39. <https://doi.org/10.3897/evolsyst.5.62003>

Manuscript received: 21 June 2022

Manuscript accepted: 14 December 2022

Published on: 3 May 2023

Topic editor: Tony Robillard

Section editor: Max Barclay

Desk editor: Eva-Maria Levermann

Printed versions of all papers are also deposited in the libraries of the institutes that are members of the *EJT* consortium: Muséum national d'histoire naturelle, Paris, France; Meise Botanic Garden, Belgium; Royal Museum for Central Africa, Tervuren, Belgium; Royal Belgian Institute of Natural Sciences, Brussels, Belgium; Natural History Museum of Denmark, Copenhagen, Denmark; Naturalis Biodiversity Center, Leiden, the Netherlands; Museo Nacional de Ciencias Naturales-CSIC, Madrid, Spain; Leibniz Institute for the Analysis of Biodiversity Change, Bonn – Hamburg, Germany; National Museum of the Czech Republic, Prague, Czech Republic.