



This work is licensed under a Creative Commons Attribution License (CC BY 4.0).

Research article

urn:lsid:zoobank.org:pub:59CC207D-5149-4779-BF4C-8B47A4789E0D

Novel additions to the jumping spider subfamily Spartaeinae Wanless, 1984 from India (Araneae, Salticidae, Spartaeini)

John T.D. CALEB^{1,*}, Puthoor Pattammal SUDHIN², B.G. NISHA³,
Chinmay C. MALIYE⁴, Rajesh V. SANAP⁵, Gautam KADAM⁶ & Souvik SEN⁷

¹Department of Anatomy, Saveetha Medical College & Hospital, Saveetha Institute of Medical and Technical Sciences, Saveetha University, Chennai 602105, Tamil Nadu, India.

^{2,7}Zoological Survey of India, Prani Vigyan Bhawan, M-Block, New Alipore, Kolkata 700053, West Bengal, India.

³Chilipili, 4th Main 5b Right cross Jayanagar West, Tumkur 572102, Karnataka, India.

³Wildlife Aware Nature Club, Tumakuru 572101, Karnataka, India.

⁴#146, Sunkalpalya, Bengaluru 560060, Karnataka, India.

⁵Rudra Heights, Nashik 422010, Maharashtra, India.

⁶Division of Arachnology, Department of Zoology, Sacred Heart College, Thevara, Cochin, Kerala 682 013, India.

*Corresponding author: caleb87woodgate@gmail.com

²Email: sudhinpp@gmail.com

³Email: bgnisha0@gmail.com

⁴Email: chinmaycmaliye@gmail.com

⁵Email: rajeshvsanap@gmail.com

⁶Email: gautamkadam7wild@gmail.com

⁷Email: sensouvik07@gmail.com

¹urn:lsid:zoobank.org:author:CFE601A6-E267-4D7F-845E-9A684E14374B

²urn:lsid:zoobank.org:author:8AA2CE3E-6C13-4C79-8EFD-AB747EF36112

³urn:lsid:zoobank.org:author:180ABAC6-CC37-468F-8BA5-0417713DDEBB

⁴urn:lsid:zoobank.org:author:2A806168-D573-4984-AD88-7D4DEDC5D5D

⁵urn:lsid:zoobank.org:author:FB16FEF1-8F98-4B10-9343-0A4E6263B879

⁶urn:lsid:zoobank.org:author:F099D365-4F6E-48EB-8C59-D3039D239FD0

⁷urn:lsid:zoobank.org:author:5B0AEE87-46BC-4E66-A24B-5917BBDE29A1

Abstract. A new spartaeine species, *Spartaeus karigiri* Caleb, Sudhin, Sen & Kadam sp. nov. is described from India. The genera *Sonoita* G.W. Peckham & E.G. Peckham, 1903 and *Spartaeus* Thorell, 1891 are reported for the first time from India. *Marpissa gangasagarensis* Majumder, 2005 syn. nov. is recognized as a junior synonym of *Phaeacius fimbriatus* Simon, 1900. Additionally, distributional data is provided for *Brettus anchorum* Wanless, 1979, *Portia albimana* (Simon, 1900) and *Portia labiata* (Thorell, 1887). Detailed morphological descriptions, illustrations, and distributional maps are also provided.

Keywords. Africa, Holcolaetina, new species, *Sonoita*, *Spartaeus*.

Caleb J.T.D., Sudhin P.P., Nisha B.G., Maliye C.C., Sanap R.V., Kadam G. & Sen S. 2025. Novel additions to the jumping spider subfamily Spartaeinae Wanless, 1984 from India (Araneae, Salticidae, Spartaeini). *European Journal of Taxonomy* 997: 77–98. <https://doi.org/10.5852/ejt.2025.997.2925>

Introduction

The jumping spider family Salticidae Blackwall, 1841 is the most diverse within India, encompassing 326 species distributed across 110 genera (Caleb & Sankaran 2025). The tribe Spartaeini Wanless, 1984, is primarily found in Africa and Asia with a few species found in Europe and Australasia. The subtribe Spartaeina Wanless, 1984, is limited to the Old World (Maddison 2015). In India, this subtribe is represented by 13 species across 8 genera (Caleb & Sankaran 2025). Many members of Spartaeini are known for their unique behaviours, such as preying on other spiders (araneophagy), constructing webs for prey capture, invading the webs of other spiders and aggressive mimicry (Su *et al.* 2007).

During the examination of unidentified jumping spider collections from Karnataka and Tamil Nadu states of India, we identified a member of the genus *Sonoita* G.W. Peckham & E.G. Peckham, 1903 and a new species belonging to the genus *Spartaeus* Thorell, 1891. The genus *Sonoita*, originally described by G.W. Peckham & E.G. Peckham (1903), is primarily known from Africa, with two species recognized to date: *S. ledouxi* Wesolowska & Russell-Smith, 2022, and *S. lightfooti* G.W. Peckham & E.G. Peckham, 1903 (WSC 2025). *Sonoita* is part of the subtribe Holcolaetina Simon, 1901, a strictly African group distinguished by the palp bearing a prominent conductor and a distinct median apophysis (Wanless 1985). The genus *Spartaeus* established by Thorell (1891) comprises 18 species distributed across East Asia and Southeast Asia (WSC 2025).

The present paper aims to achieve the following objectives: (1) provide detailed description of a new species from India, (2) marking the first recorded presence of the genera *Sonoita* and *Spartaeus* in the country; (3) clarify the taxonomic identity of *Marpissa gangasagarensis* Majumder, 2005, based on the holotype housed at the Zoological Survey of India, Kolkata; and (4) present new distributional data for *Brettus anchorum* Wanless, 1979, *Portia albimana* (Simon, 1900), *Portia labiata* (Thorell, 1887) and *Sonoita* cf. *lightfooti* G.W. Peckham & E.G. Peckham, 1903.

Material and methods

Specimens were preserved in 70% ethanol and studied under a Leica S APO stereo microscope. Photomicrography was performed using a Leica MC190 HD camera attached to the stereo microscope and images were processed with the Leica Application Suite (LAS) ver. 4.13. All measurements are given in millimetres (mm). Lengths of leg segments are given as follows: total [femur, patella, tibia, metatarsus (except for pedipalp), tarsus]. The description of colouration is based on alcohol-preserved specimens. The paratype female of *Spartaeus karigiri* Caleb, Sudhin, Sen & Kadam sp. nov. was examined and imaged under a Leica M205 A stereozoom microscope attached with a Flexacam C3 camera and processed using extended focus montage LAS X software. The studied specimens are housed in the National Zoological Collections of the Zoological Survey of India: The Headquarters, Kolkata (NZN-ZSI); Southern Regional Centre, Chennai (ZSI-SRC), and the Research collections of the National Centre for Biological Sciences, Bengaluru (NCBS).

Abbreviations (used in the text and figures)

AER = anterior eye row
ALE = anterior lateral eye
AME = anterior median eye
CD = copulatory duct

CO	=	copulatory opening
DTA	=	dorsal tibial apophysis
E	=	embolus
EFL	=	eye field length
FD	=	fertilization duct
ITA	=	intermediate tibial apophysis
PER	=	posterior eye row
PLE	=	posterior lateral eye
PME	=	posterior median eye
RTA	=	retrolateral tibial apophysis
S	=	spermatheca
TD	=	tegular depression
VTA	=	ventral tibial apophysis

Institutional abbreviations

NCBS	=	Research collections of the National Centre for Biological Sciences, Bengaluru
NZC-ZSI	=	National Zoological Collections, Zoological Survey of India, Kolkata
ZSI-SRC	=	National Zoological Collections, Zoological Survey of India, Southern Regional Centre, Chennai

Results

Taxonomy

Class Arachnida Lamarck, 1801
 Order Araneae Clerck, 1757
 Family Salticidae Blackwall, 1841
 Subfamily Spartaeinae Wanless, 1984
 Tribe Spartaeini Wanless, 1984
 Subtribe Holcolaetina Simon, 1901
 Genus *Sonoita* G.W. Peckham & E.G. Peckham, 1903

Sonoita cf. *lightfooti* G.W. Peckham & E.G. Peckham, 1903
 Figs 1–3, 12

Diagnosis

See Wanless (1985) and Wesolowska & Russell-Smith (2022).

Material examined

INDIA – **Karnataka** • 1 ♂; Tumkuru, Halekote near Deverayandurga Hill; 13.3845° N, 77.2070° E; 871 m a.s.l.; 10 Jul. 2023; B.G. Nisha leg.; ZSI-SRC-I/SP 47 • 1 ♂; Bengaluru, National Centre for Biological Sciences campus; 13.0721° N, 77.5802° E; 952 m a.s.l.; 26 Jul. 2016; Rajesh Sanap leg.; NCBS-AA-8992.

Description

Male (ZSI-SRC-I/SP 47; Figs 1–3)

GENERAL MORPHOLOGY. Carapace brown, clothed with fine pale hairs (Figs 1A, 2A). Eyes surrounded by black regions; anterior eyes surrounded by white orbital setae (Figs 1B–C, 2C). Chelicerae yellow-brown. Sternum oval, yellow-brown; labium and maxillae brown, apical portion of labium and inner portion of maxillae paler (Fig. 2B). Clypeus brown (Fig. 2C). Abdomen oval, brown, mid-dorsal region yellow-brown; posterior half with pairs of lateral white setae; posterior region with chevron-shaped

brown markings (Fig. 2A); venter brown with light brown spots arranged longitudinally (Fig. 2B). Spinnerets yellow-brown. Leg I with leaf-like setae arranged on ventral region of femora, patellae and tibiae, those under tibiae dense and longer than those under femora, metatarsi I and tarsi I covered with white setae; legs II–IV yellow-brown with brown annulations; metatarsi and tarsi II–IV yellow, covered with white hairs (Fig. 2A–D).

MEASUREMENTS. Body length 3.12; carapace length 1.45, width 1.26; abdomen length 1.67, width 1.05. Eye measurements and inter-distances: AME 0.29, ALE 0.15, PME 0.11, PLE 0.16. AER 0.98, EFL 0.83, PER 1.06, AME–AME 0.03, AME–ALE 0.04, ALE–ALE 0.70, ALE–PLE 0.59, PLE–PLE 0.87, PME–PME 0.79, PME–PLE 0.31. Clypeus height 0.03. Length of chelicera 0.31. Measurement of legs: leg I 3.10 [0.96, 0.52, 0.73, 0.53, 0.36], II 2.76 [0.86, 0.46, 0.58, 0.50, 0.36], III 2.78 [0.94, 0.38, 0.57, 0.54, 0.35], IV 3.63 [1.07, 0.53, 0.76, 0.86, 0.41]. Leg formula: 4132.

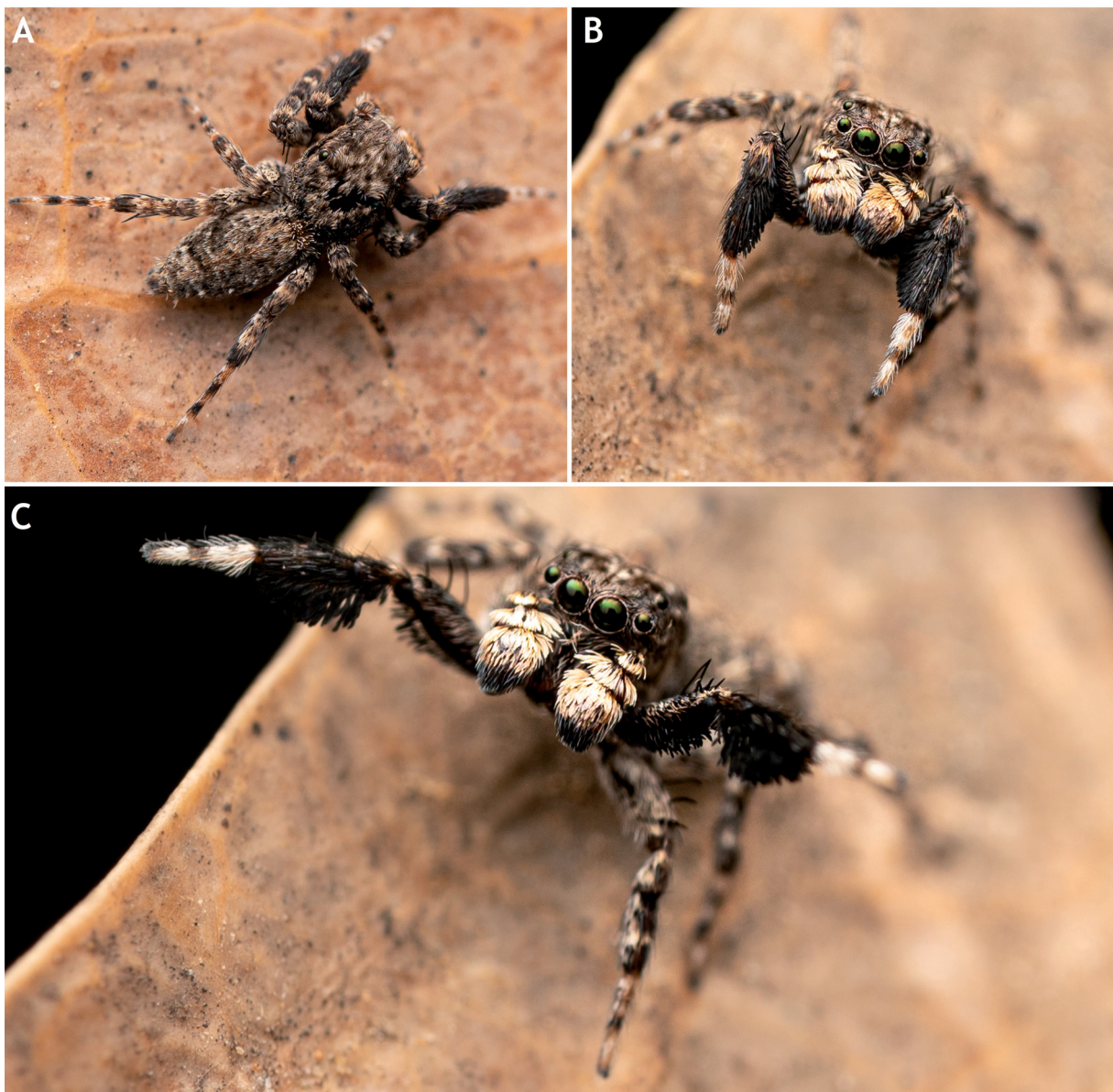


Fig. 1. *Sonoita* cf. *lightfooti* G.W. Peckham & E.G. Peckham, 1903, ♂ (ZSI-SRC-I/SP 47). **A.** Dorsal view. **B–C.** Front view. Photo credits: B.G. Nisha.

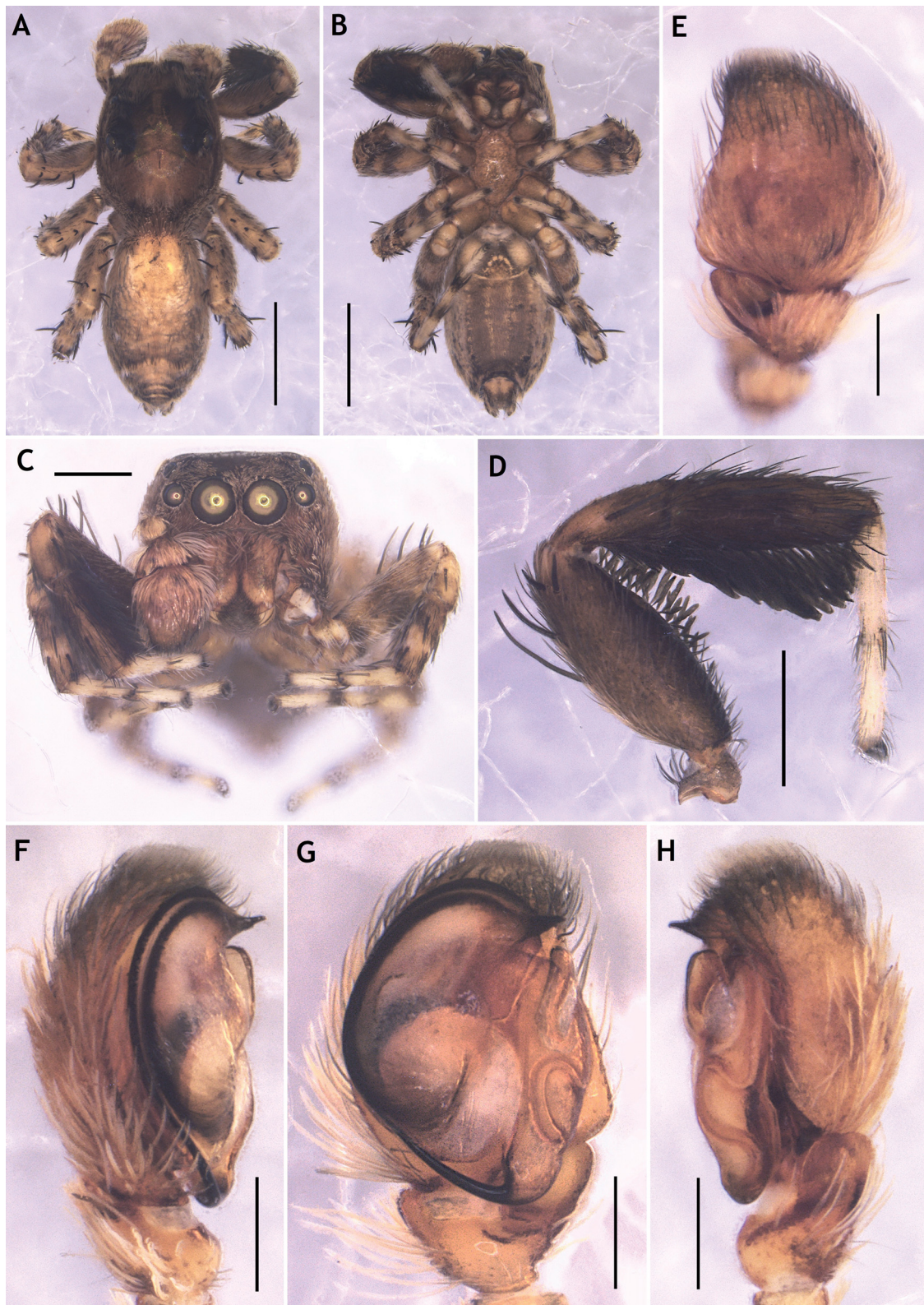


Fig. 2. *Sonoita cf. lightfooti* G.W. Peckham & E.G. Peckham, 1903, ♂ (ZSI-SRC-I/SP 47). **A.** Habitus, dorsal view. **B.** Same, ventral view. **C.** Same, front view. **D.** Left leg I, prolateral view. **E.** Left palp, dorsal view. **F.** Same, prolateral view. **G.** Same, ventral view. **H.** Same, retrolateral view. Scale bars: A–B = 1 mm; C–D = 0.5 mm; E–H = 0.2 mm.

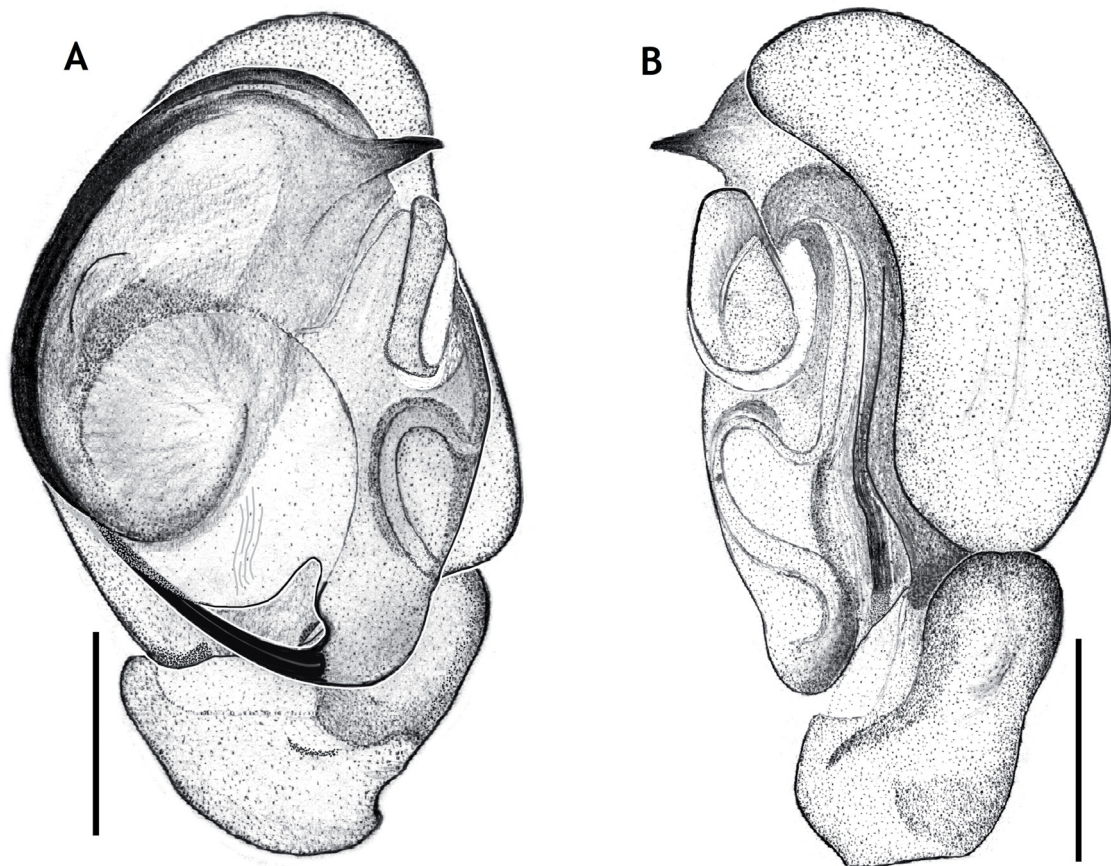


Fig. 3. *Sonoita* cf. *lightfooti* G.W. Peckham & E.G. Peckham, 1903, ♂ (ZSI-SRC-I/SP 47). **A.** Left palp, ventral view. **B.** Same, retrolateral view. Scale bars = 0.2 mm.

COPULATORY ORGAN (Figs 2E–H, 3A–B). Palp yellow-brown; tibia and cymbium clothed with white hairs; apical portion of cymbium with black hairs; RTA flattened, spatula-like; bulbus with a median apophysis along retrolateral side; embolus long and slender, originates from 6 o'clock position, runs along prolateral side with tip hidden behind functional conductor (Figs 2E–H, 3A–B).

Distribution

Africa (WSC 2025), India (Karnataka) (Fig. 12).

Subtribe *Spartaeina* Wanless, 1984

Genus *Spartaeus* Thorell, 1891

Spartaeus karigiri Caleb, Sudhin, Sen & Kadam sp. nov.

urn:lsid:zoobank.org:act:11601ECE-324C-47A0-8039-7E102C9A8C9C

Figs 4–7, 12

Diagnosis

The male copulatory organ of *S. karigiri* sp. nov., is most similar to that of *S. triapiculus* Yang, W. Liu, P. Liu & Peng, 2017, from which it can be distinguished by the following combination of characters: tibia with four apophyses including one dorsal apophysis (three in *S. triapiculus*, and without dorsal apophysis); embolus with broad base and pointed tip in ventral view (narrow, slender and relatively

longer in *S. triapiculus*) (cf. Figs 5D–F, 7A–C with Yang *et al.* 2017: figs 9b–c, 10a–b). The female genitalia are most similar to those of *S. abramovi* Logunov & Azarkina, 2008 from which they can be easily distinguished by the laterally aligned copulatory openings (anteriorly aligned in *S. abramovi*); spermathecae globular and separated (ovoid and contiguous in *S. abramovi*) (cf. Figs 5D–F, 7D–E with Logunov & Azarkina 2008: figs 55–56).

Etymology

The specific epithet ‘*karigiri*’, a noun in apposition, is derived from the popular name of Devarayanadurga Hill, near which the species was discovered. *Karigiri* translates to “Elephant Hill”, a reference to the hill’s resemblance to an elephant when viewed from the eastern side.

Type material

Holotype

INDIA • ♂; Karnataka, Tumkuru, Halekote, near Deverayandurga Hill; 13.3866° N, 77.2081° E; 837 m a.s.l.; 2 Apr. 2023; B.G. Nisha leg.; ZSI-SRC-I/SP 46.

Paratypes

INDIA – **Karnataka** • 1 ♀; Tumkuru, Halekote, near Deverayandurga Hill; 13.3841° N, 77.2067° E; 864 m a.s.l.; 6 Jul. 2023; B.G. Nisha leg.; NZC-ZSI-9194/18. – **Tamil Nadu** • 1 ♂; Villupuram District, Pasumalaithangal Village; 12.225278° N, 79.352778° E; 127 m a.s.l.; 17 Sep. 2023; K. Gautam leg.; collected from tree bark; NCBS-AA-9041 • 1 ♀; same data as for preceding; collected from a boulder; NCBS-AA-9042.

Description

Male (holotype, ZSI-SRC-I/SP 46; Figs 4A–C, 5A–E, 7A–C)

GENERAL MORPHOLOGY. Carapace brown, thoracic region yellow; outer carapace rim lined by thin white setae; a short strip of lateral white setae present below PLEs (Figs 4A, 5A). Eyes surrounded by black regions; anterior eyes surrounded by white orbital setae (Fig. 5B). Clypeus yellow-brown, cheek-region below ALEs covered with white band which runs behind until posterior thoracic region (Fig. 5B). Chelicerae brown with 4 large teeth on promargin and 8 small teeth on retromargin (Fig. 5C). Sternum oval, yellow-brown; labium and maxillae brown, apical portion of labium and inner portion of maxillae paler. Abdomen oval, brown, dorsally with yellowish and brown markings; posterior portion with three distinct brown spots (Fig. 5A); lateral sides brown; venter brown with light brown spots arranged longitudinally. Spinnerets yellow-brown. Legs yellow with brown patches and white hairs; femora I–IV with longitudinal prolateral and ventral brown stripes; all tarsi yellow (Fig. 5A).

MEASUREMENTS. Body length 6.49; carapace length 3.30, width 2.83; abdomen length 3.19, width 1.93. Eye measurements and inter-distances: AME 0.76, ALE 0.45, PME 0.28, PLE 0.44, AER 2.36, EFL 1.66, PER 2.03, AME–AME 0.03, AME–ALE 0.03, ALE–ALE 1.52, ALE–PLE 1.08, PLE–PLE 1.50, PME–PME 1.32, PME–PLE 0.48. Clypeus height 0.10. Length of chelicera 1.28. Measurement of legs: leg I 17.23 [4.66, 2.18, 5.43, 3.86, 1.10], II 10.88 [3.27, 1.55, 2.76, 2.45, 0.85], III 10.70 [3.11, 1.31, 2.68, 2.71, 0.89], IV 9.58 [2.69, 1.01, 2.33, 2.56, 0.99]. Leg formula 1234.

COPULATORY ORGAN (Figs 5D–F, 7A–C). Palp yellow; tibia with four apophyses: ventral tibial apophysis finger-like and curved, directed apically in ventral view; intermediate tibial apophysis triangular, directed retrolaterally in ventral view; retrolateral tibial apophysis long, broad basally and tapering toward tip, dorsal margin with a flange in retrolateral view; dorsal tibial apophysis short, triangular, directed retrolaterally in dorsal view; tegulum oval, tegular apophysis triangular in ventral view; embolus originating from 11 o’clock position, broad basally and tapering toward tip (Figs 5D–F, 7A–C).

Female (paratype, NZC-ZSI-9194/18; Figs 6A–F, 7D–E)

GENERAL MORPHOLOGY. In all aspects as the male except the following: lighter than male in colour; femora I–IV without longitudinal brown stripes (Fig. 6A–C).

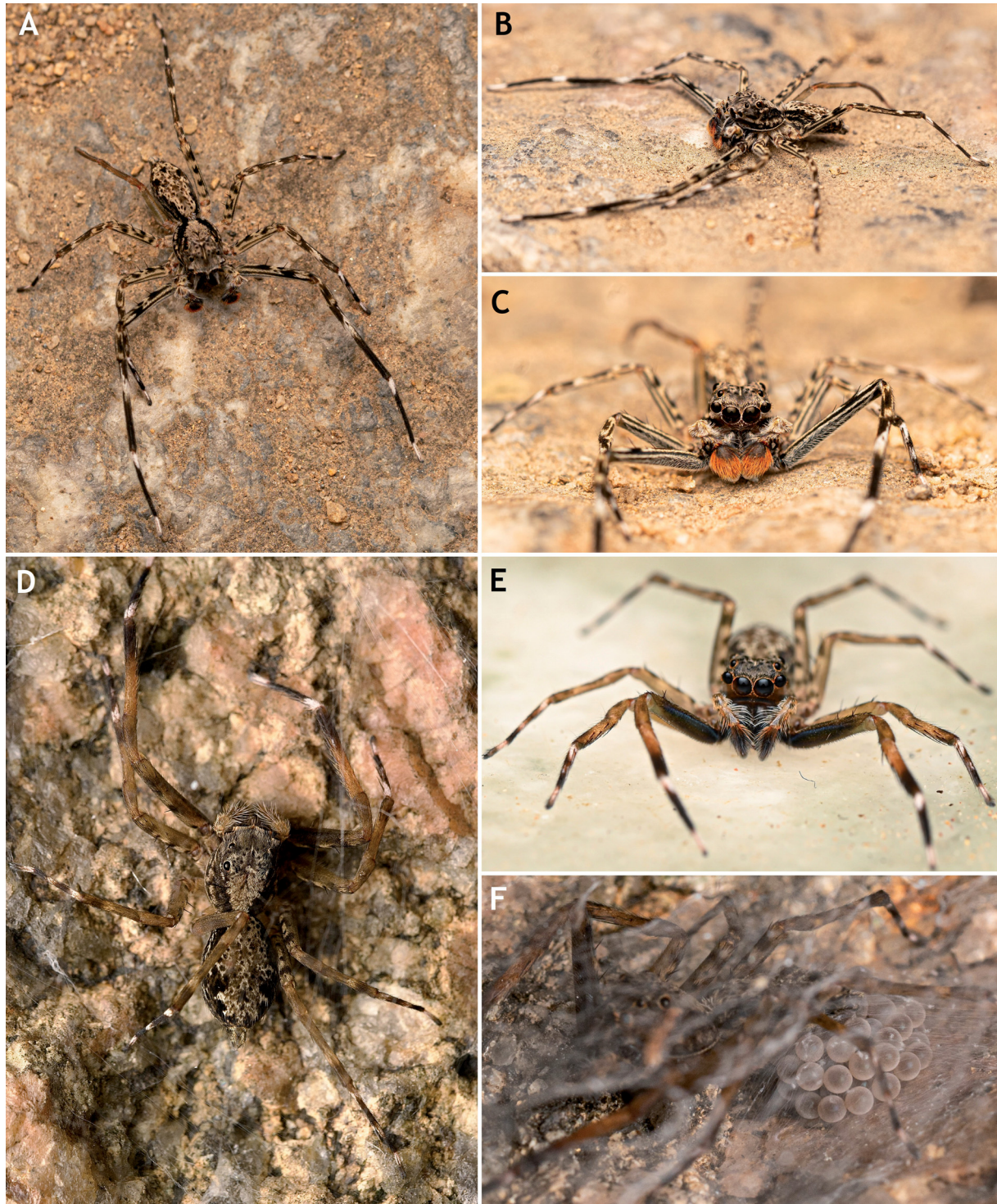


Fig. 4. *Spartaeus karigiri* Caleb, Sudhin, Sen & Kadam sp. nov. A–C. Holotype, ♂ (ZSI-SRC-I/SP 46). D–E. Female (NZC-ZSI-9194/18). F. Female with egg clutch was not collected. A, D. Dorsal views. B, F. Lateral views. C, E. Front views. Photo credits: B.G. Nisha (B–C, E–F); Chinmay Maliye (A, D).

MEASUREMENTS. Body length 10.45; carapace length 4.15, width 3.43; abdomen length 5.30, width 3.10. AER 2.83, EFL 1.90, PER 2.48. Eye measurements and inter-distances: AME 0.89, ALE 0.57, PME 0.33, PLE 0.51, AME–AME 0.02, AME–ALE 0.03, ALE–ALE 1.88, ALE–PLE 1.23, PLE–PLE 1.78, PME–PME 1.69, PME–PLE 0.60. Clypeus height 0.22. Length of chelicera 1.92. Measurement of legs: leg I 14.12 [4.32, 1.79, 4.11, 2.70, 1.20], II 11.25 [3.41, 1.36, 2.88, 2.40, 1.20], III 11.62 [3.33, 1.24, 2.81, 2.91, 1.33], IV 14.65 [3.90, 1.39, 3.82, 4.19, 1.35]. Leg formula 4132.

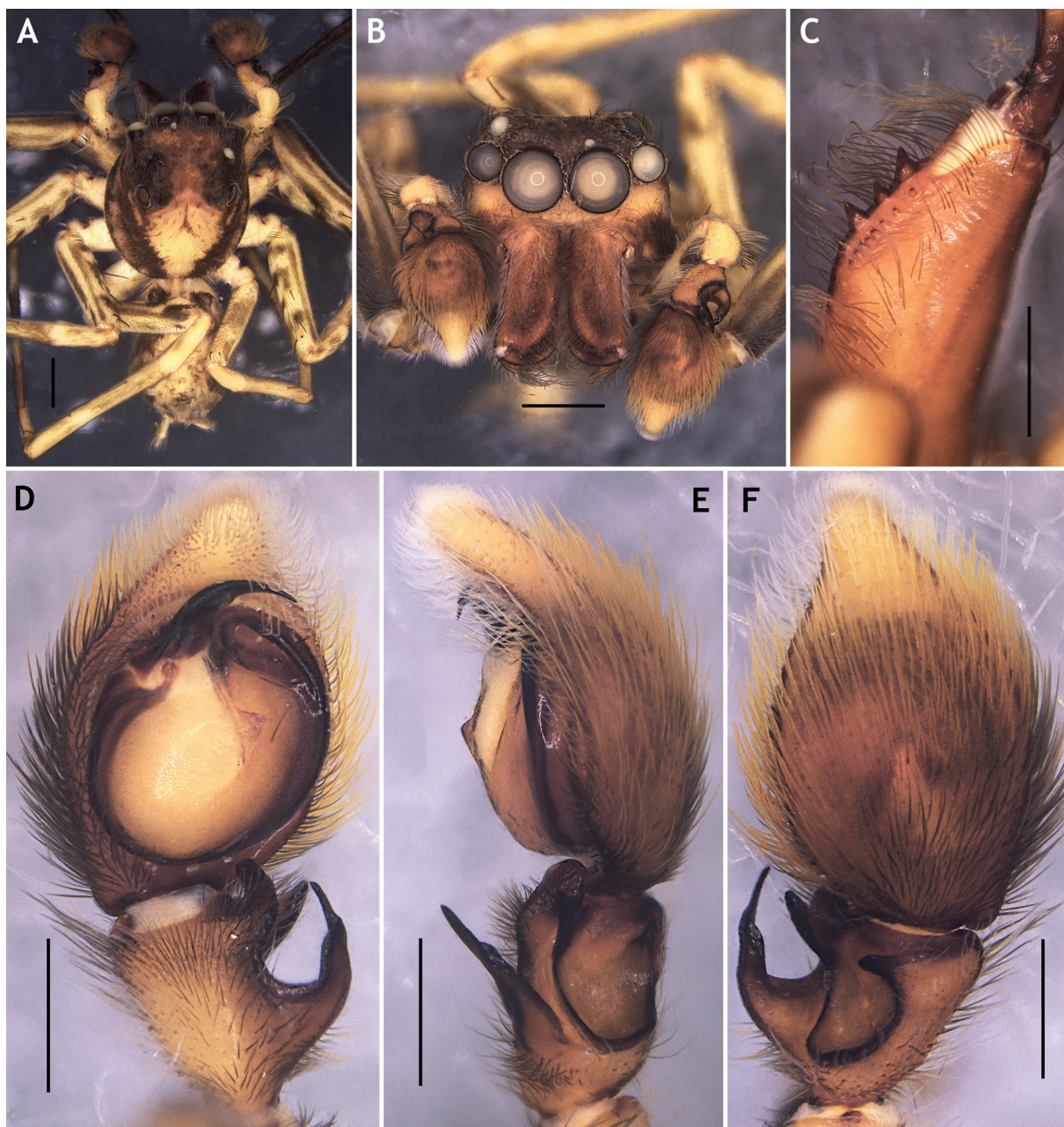


Fig. 5. *Spartaeus karigiri* Caleb, Sudhin, Sen & Kadam sp. nov., holotype, ♂ (ZSI-SRC-I/SP 46). **A.** Habitus, dorsal view. **B.** Same, front view. **C.** Left chelicera, ventral view. **D.** Left palp, ventral view. **E.** Same, retrolateral view. **F.** Same, dorsal view. Scale bars: A–B = 1 mm; C–F = 0.5 mm.

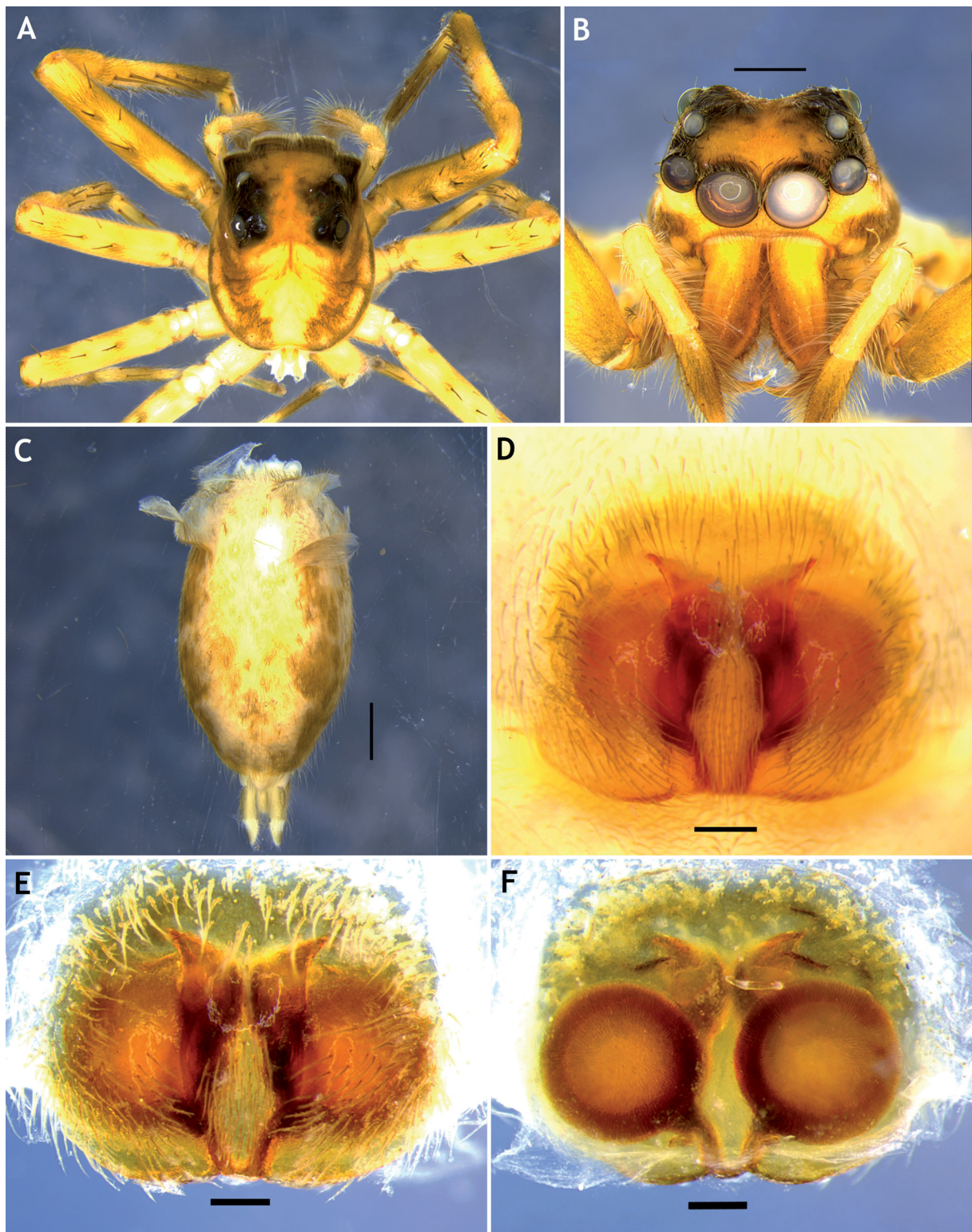


Fig. 6. *Spartaeus karigiri* sp. nov. Caleb, Sudhin, Sen & Kadam, paratype, ♀ (NZC-ZSI-9194/18). **A.** Carapace, dorsal view. **B.** Front view. **C.** Abdomen, dorsal view. **D.** Intact epigyne, ventral view. **E.** Dissected and cleared epigyne, ventral view. **F.** Vulva, dorsal view. Scale bars: A–C = 1 mm; D–F = 0.2 mm.

COPULATORY ORGAN. Epigyne with copulatory openings placed anteriorly and aligned laterally; copulatory ducts short and broad, enter spermathecae posteriorly; spermathecae globular; fertilization ducts short, located posteriorly (Figs 6D–F, 7D–E).

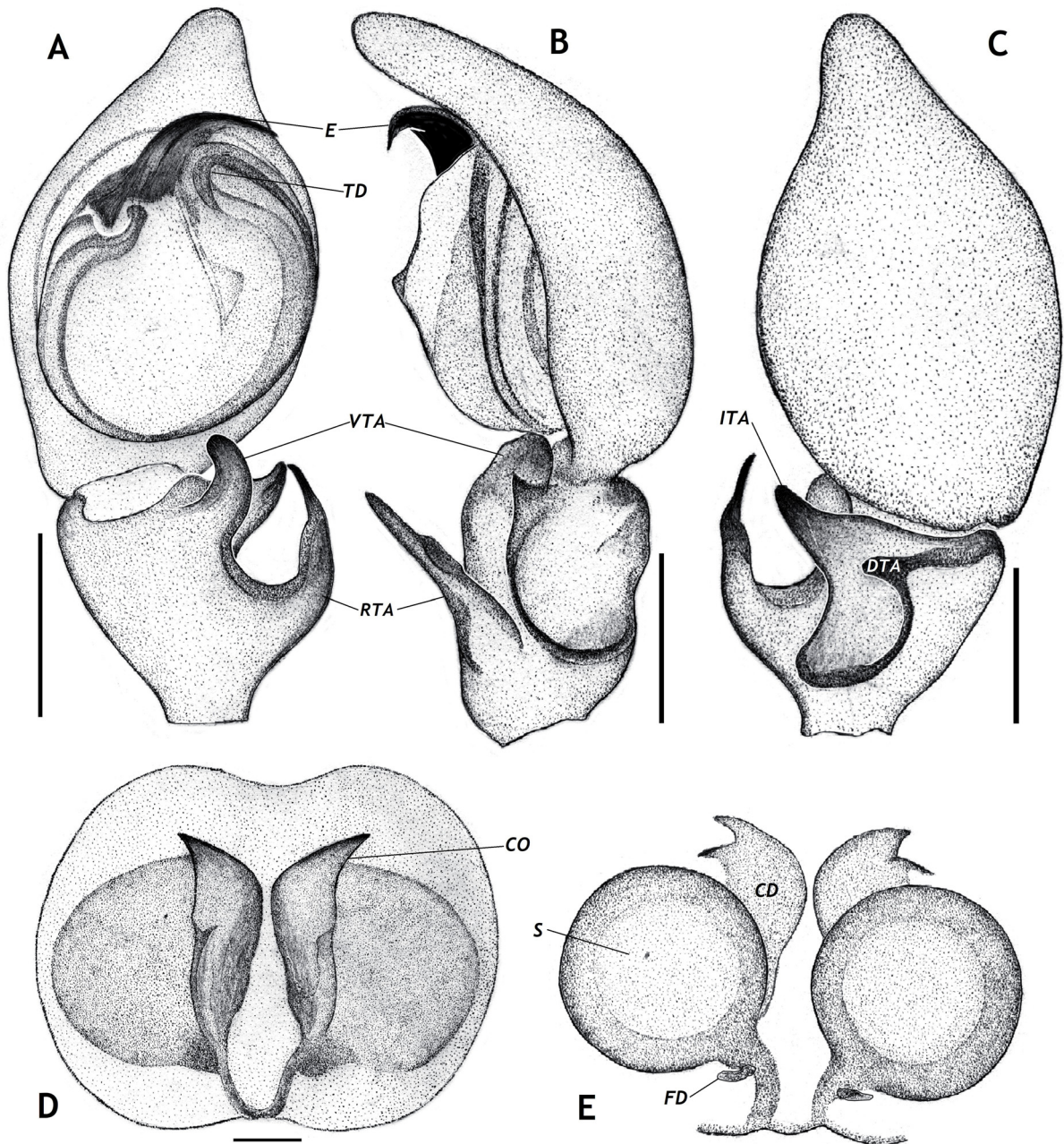


Fig. 7. *Spartaeus karigiri* Caleb, Sudhin, Sen & Kadam sp. nov. **A–C.** Holotype, ♂ (ZSI-SRC-I/SP 46). **D–E.** Paratype, ♀ (NZN-ZSI-9194/18). **A.** Left palp, ventral view. **B.** Same, retrolateral view. **C.** Same, dorsal view. **D.** Epigyne, ventral view. **E.** Vulva, dorsal view. Scale bars: A–C = 0.5 mm; D–E = 0.2 mm. Abbreviations: see Material and methods.

Natural history

The species is found on boulders, crevices and walls of old structures (Fig. 4A–F). It forms a simple silk retreat of thin layers of silk on bare rock as shelter. It was observed feeding on crickets in its natural habitat and primarily fed on moths in captivity.

Distribution

India (Karnataka and Tamil Nadu) (Fig. 12).

New synonymy

Phaeacius fimbriatus Simon, 1900

Figs 8, 12

Phaeacius fimbriatus Simon, 1900: 32 (D♀).

Marpissa gangasagarensis Majumder, 2005: 45, figs 19–23 (holotype at the Zoological Survey of India, Kolkata, examined) **syn. nov.**

Phaeacius fimbriatus – Wanless 1981: 202, figs 4a–h, 5b (♀, D♂). — Roy *et al.* 2016: 27, figs 23a–e, 26c, 28e (♀).

For a complete list of taxonomic references refer the WSC (2025).

Type material

Holotype

INDIA • ♀ (holotype of *Marpissa gangasagarensis*); West Bengal, South 24 Parganas Dist., Gangasagar Island, near Kapilmuni Ashram; 21.6375° N, 88.0755° E; 5 m a.s.l.; 1 Jan. 1996; S.C. Majumder leg.; NZC-ZSI-5569/18.

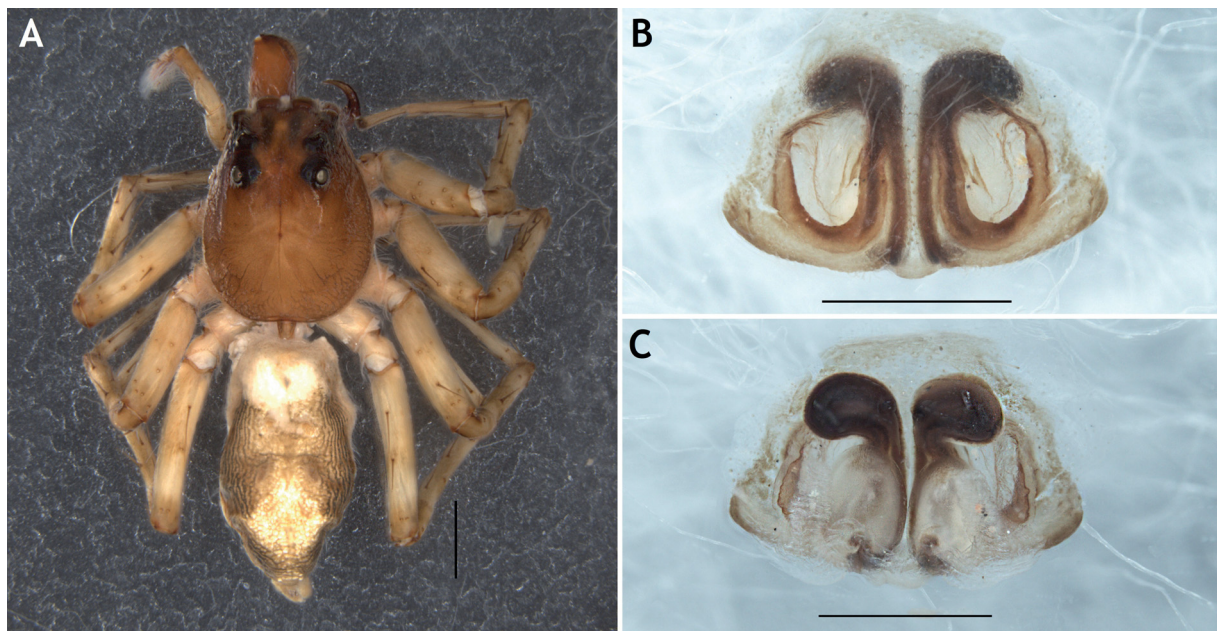


Fig. 8. *Marpissa gangasagarensis* Majumder, 2005, holotype, ♀ (NZC-ZSI-5569/18) (= *Phaeacius fimbriatus* Simon, 1900 **syn. nov.**) from West Bengal. **A.** Habitus, dorsal view. **B.** Epigyne, ventral view. **C.** Vulva, dorsal view. Scale bars: A = 2 mm; B–C = 1 mm.

Remarks

This species was described based on a single female collected from Gangasagar Island, near Kapilmuni Ashram, West Bengal. The original description is too short and the illustrations are sketchy, thus not allowing recognition of the species. However, examination of the holotype kept in the Zoological Survey of India, Kolkata, allowed clarification on the taxonomic status of this species. Detailed examination of the holotype revealed that it is identical to *Phaeacius fimbriatus*. The epigynal structure with large oval windows and a broad median septum; pear-shaped spermathecae placed close to each other along the posterior margin; anterior portion with sclerotized loops of copulatory ducts and lateral membranous pockets with wrinkled appearance unambiguously match with *P. fimbriatus* (cf. Fig. 8A–C with Wanless 1981: fig. 4d). *Marpissa gangasagarensis* is therefore treated as a junior synonym of *P. fimbriatus*.

Distribution

India (West Bengal, Kerala) (Roy *et al.* 2016; present data), Nepal, Indonesia (Java) (WSC 2025) (Fig. 12).

Distributional records

Genus *Brettus* Thorell, 1895

Brettus anchorum Wanless, 1979

Fig. 12

Brettus anchorum Wanless, 1979: 188, figs 2f, 3b; 4c–d (D♀).

Brettus anchorum – Wanless 1984: 181, figs 23a–h (D♂).

For a complete list of taxonomic references refer to the WSC (2025).

Material examined

INDIA • 1 ♀; Himachal Pradesh, Simla; 1500 feet (= 457 m a.s.l.); May 1913; Lord Carmichael leg.; NZC-ZSI-6683/18.

Distribution

India (Himachal Pradesh, Tamil Nadu, West Bengal) (Caleb 2019; present study), Nepal, China (WSC 2025) (Fig. 12).

Brettus cingulatus Thorell, 1895

Figs 9, 12

Brettus cingulatus Thorell, 1895: 355 (D♂).

Brettus cingulatus – Wanless 1979: 185, figs 1a, c, e, g, 2a–b (♂). — Ahmed *et al.* 2017: 3, figs 2.1–4, 3.1–7, 4.1–8, 5.1–11, 6.1–11, 8.1–4 (♂).

For a complete list of taxonomic references refer to the WSC (2025).

Material examined

INDIA – **Karnataka** • 1 ♂; Bengaluru, National Centre for Biological Sciences campus; 13.0711° N, 77.5805° E; 932 m, a.s.l.; 18 May 2015; John Caleb leg.; NCBS-AR-140. – **West Bengal** • 1 ♂, 1 ♀; North 24 Parganas, Palta; 22.7858° N, 88.3711° E; 10 m a.s.l.; 21 Nov. 2013; Bijan Biswas leg.; NZC-



Fig. 9. *Brettus cingulatus* Thorell, 1895 (NZC-ZSI-9195/18: male (A–D) and female specimen (E–I) from West Bengal). A. Male habitus, dorsal view. B. Same, ventral view. C. Male palp, ventral view. D. Same, retrolateral view. E. Habitus, dorsal view. F. Same, ventral view. G. Intact epigyne, ventral view. H. Dissected and cleared epigyne, ventral view. I. Vulva, dorsal view. Scale bars: A–B, E–F = 1 mm; C–D, G–I = 0.2 mm.

ZSI-6662/18 • 1 ♂, 1 ♀; Bolpur, Khandagram; 23.707778° N, 87.485° E; 65 m a.s.l.; 26 Jul. 2023; Arghya Ghosh leg.; NZC-ZSI-9195/18.

Distribution

India (Assam, Karnataka, Kerala, Maharashtra, Tamil Nadu and West Bengal) (Caleb 2019), Sri Lanka, China, Vietnam, Myanmar, Thailand, Malaysia, Indonesia (Sumatra) (WSC 2025) (Fig. 12).

Genus *Phaeacius* Simon, 1900

Phaeacius lancearius (Thorell, 1895)

Figs 10, 12

Cocalus lancearius Thorell, 1895: 357 (D♂).

Phaeacius lancearius – Wanless 1981: 205, figs 1, 2a–f, 5a, c–f (♂). — Malamel 2018: 115, figs 2e–f, 6g–i (♂).

For a complete list of taxonomic references refer to the WSC (2025).

Material examined

INDIA • 1 ♂; West Bengal, South 24 Parganas Dist., beside Haripota playground, Nalban ii; 22.5072° N, 88.4772° E; 0.2 m a.s.l.; 26 Apr. 2019; K. Valarmathi and Party leg.; NZC-ZSI-6876/18.

Distribution

India (Kerala, West Bengal) (Wanless 1981; Wijesinghe 1991; Malamel 2018; Caleb 2020) and Myanmar (WSC 2025) (Fig. 12).

Genus *Portia* Karsch, 1878

Portia albimana (Simon, 1900)

Figs 11–12

Linus albimanus Simon, 1900: 33 (D♂).

Portia albimana – Wanless 1978: 107, fig. 12a–d (♂). — Murphy & Murphy 1983: 40, figs 4–5 (D♀). — Ahmed *et al.* 2015: 1, figs 7.1–4 (♂).

For a complete list of taxonomic references refer to the WSC (2025).

Material examined

INDIA – **Karnataka** • 1 ♂; Bengaluru, National Centre for Biological Sciences campus; 13.0711° N, 77.5805° E; 932 m a.s.l.; 9 May 2015; collector unknown; NCBS-AR-102. – **West Bengal** • 1 ♀; Birbhum, no other data given; NZC-ZSI-6684/18 • 1 ♀; Darjeeling, Pashok; Jun. 1916; L.C. Hartless leg.; NZC-ZSI-6685/18.

Distribution

Pakistan, India (Karnataka, Maharashtra, Tamil Nadu, Uttarakhand and West Bengal) (Murphy & Murphy 1983; Caleb 2019; present study) to Vietnam (WSC 2025) (Fig. 12).

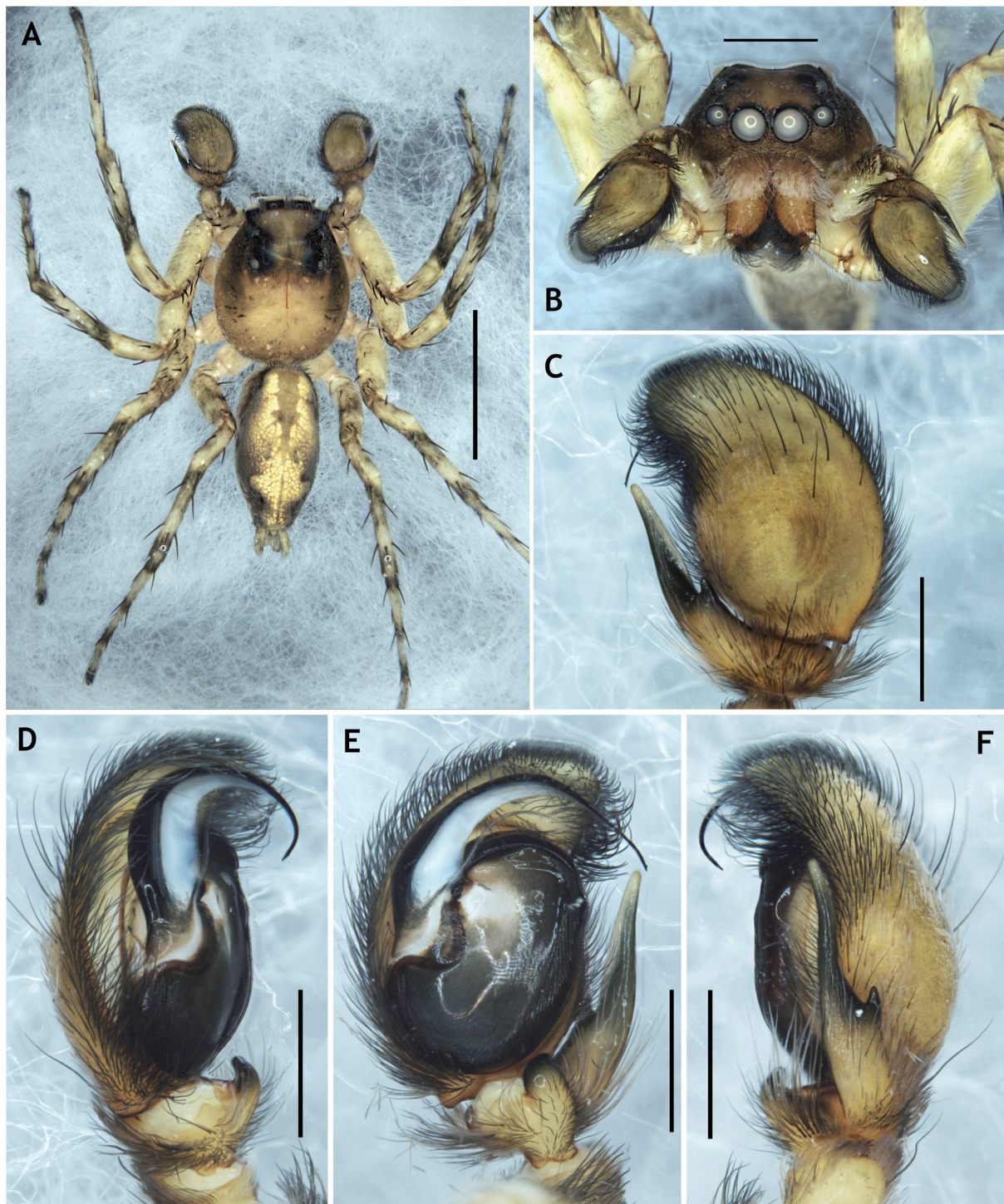


Fig. 10. *Phaeacius lancearius* (Thorell, 1895), ♂ (NZC-ZSI-6876/18) from West Bengal. **A.** Habitus, dorsal view. **B.** Frontal view. **C.** Male palp, dorsal view. **D.** Same, prolateral view. **E.** Same, ventral view. **F.** Same, retrolateral view. Scale bars: A = 5 mm; B = 2 mm; C–F = 1 mm.

Portia labiata (Thorell, 1887)

Fig. 12

Linus labiatus Thorell, 1887: 354 (D♀).

Portia labiata – Wanless 1978: 103, figs 10a–c, 11a–c (♂♀). — Murphy & Murphy 1983: 43, figs 8, 11, 14, 17, 19 (♂).

For a complete list of taxonomic references refer to the WSC (2025).

Material examined

INDIA • 1 ♂; Maharashtra, Sindhudurg, Kudal, Shivapur, Manohargad; 16.0508° N, 73.9705° E; 657 m a.s.l.; 3 Jul. 2021; K. Gautam and J. Sameer leg.; from *Ficus* tree, by hand; NCBS-AA-9043.

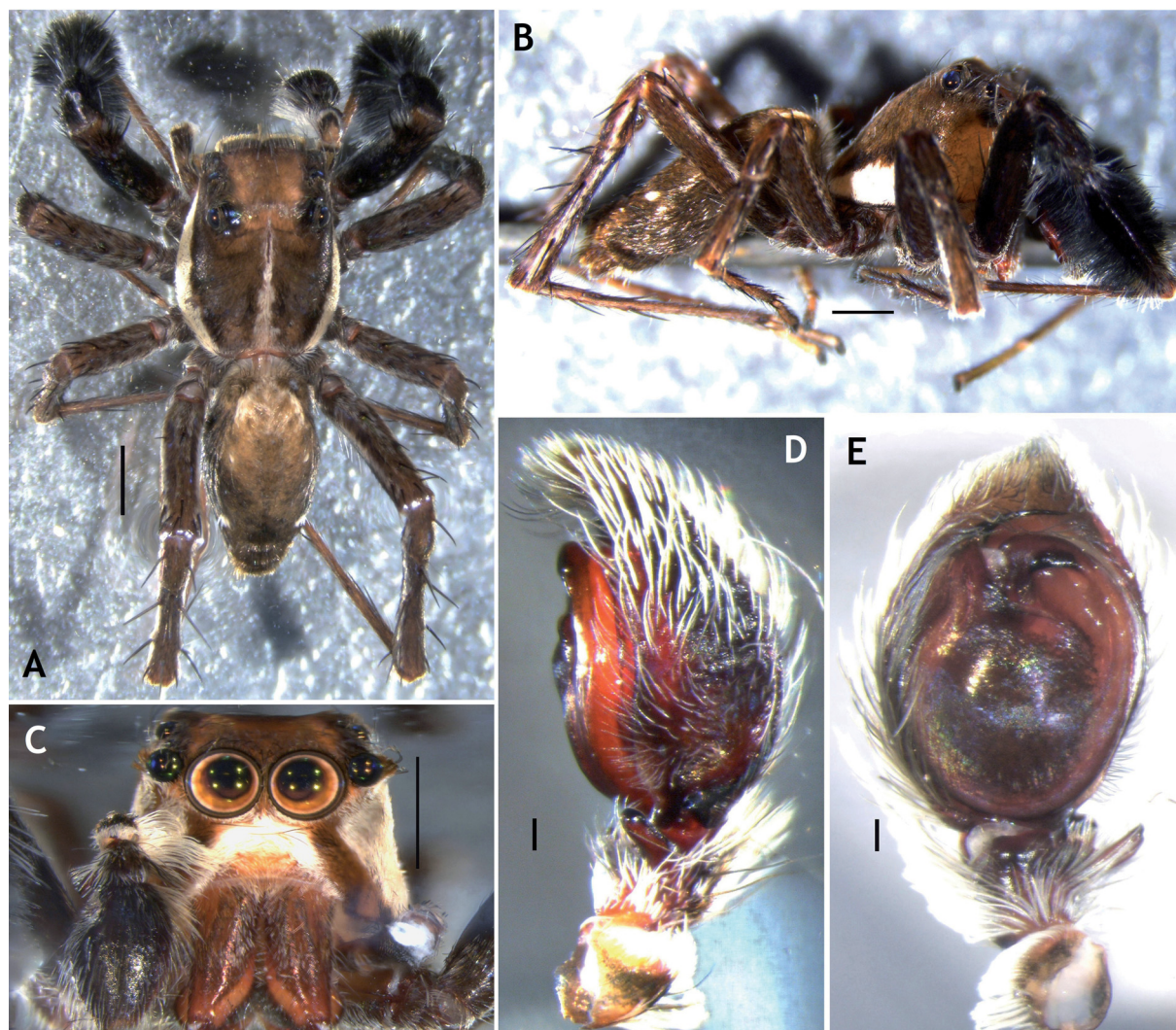


Fig. 11. *Portia albimana* (Simon, 1900), ♂ (NCBS-AR-102) from Karnataka. **A.** Habitus, dorsal view. **B.** Same, lateral view. **C.** Front view. **D.** Male palp, retrolateral view. **E.** Same, ventral view. Scale bars: A–C = 1 mm; D–E = 0.1 mm.

Distribution

India (Karnataka, Maharashtra) (Wanless 1978; Murphy & Murphy 1983; present study), Sri Lanka to China, Thailand, Vietnam, Philippines (WSC 2025) (Fig. 12).

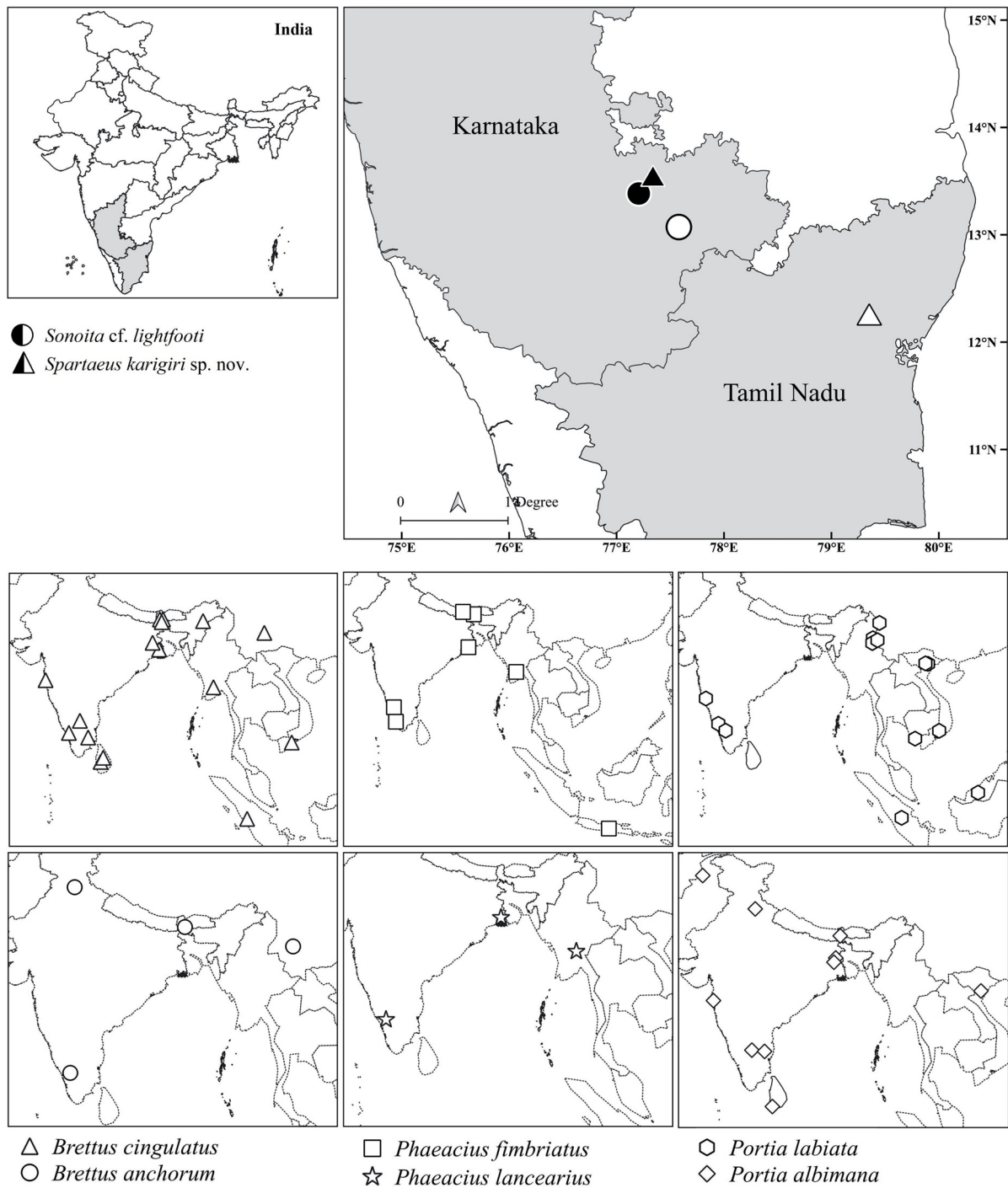


Fig. 12. Distribution map of the species treated in this study.

Discussion

Recent exploratory surveys across India have significantly expanded the known diversity of Salticidae, leading to the discovery of several new genera and species. Among these are three genera from the Old World subfamily Spartaeinae Wanless, 1984 – *Gelotia* Thorell, 1890, *Mega eupoa* Lin & Li, 2020, and *Sparbambus* Zhang, Woon & Li, 2006 – recently added to India’s salticid spider fauna (Caleb *et al.* 2018; Lin & Li 2020; Jose *et al.* 2023; Tripathi *et al.* 2023; Asima *et al.* 2024).

When describing *Mega eupoa*, Lin & Li (2020) did not explicitly state its position within Salticidae. However, they noted in the etymology that the genus name refers to its large size and evolutionary relationship to *Eupoa* Żabka, 1985, a member of the subfamily Eupoinae Maddison, 2015. Despite this, the authors compared *Mega eupoa* in their diagnosis to *Brettus* Thorell, 1895, a well-established member of Spartaeinae. Given this comparison, along with the fact that the Indian species *M. gravelyi* (Caleb, 2018) was originally placed within Spartaeinae (see comments in Caleb *et al.* 2018: 236), we consider *Mega eupoa* a member of Spartaeinae.

In India, Spartaeinae is represented by the tribe Spartaeini and its subtribe Spartaeina, comprising 13 species across eight genera – *Brettus* Thorell, 1895 (2 species), *Cyrba* Simon, 1876 (1 species), *Gelotia* Thorell, 1890 (1 species), *Mega eupoa* Lin & Li, 2020 (1 species), *Neobrettus* Wanless, 1984 (1 species), *Phaeacius* Simon, 1900 (2 species), *Portia* Karsch, 1878 (4 species), and *Sparbambus* Zhang, Woon & Li, 2006 (1 species) (Caleb & Sankaran 2025). The current study also reports the addition of *Spartaeus* to India’s spider fauna. Furthermore, the discovery of a species of *Sonoita* extends the range of the subtribe Holcolaelina to India, which was previously known only from Africa. The identification of the male *Sonoita* from India remains uncertain due to its biogeographical separation from African populations and minor morphological variations – particularly in the shape and orientation of the functional conductor of the male palp – when compared to *Sonoita lightfooti*. These differences may perhaps represent geographical variation or could indicate an undescribed species. Given this uncertainty, we use cf. to denote close resemblance while acknowledging the need for further investigation. Additional specimens must be examined to clarify its taxonomic status. Notably, while some genera – such as *Aetius* O. Pickard-Cambridge, 1897, *Capheris* Simon, 1893, *Chrysilla* Thorell, 1887, *Tanzania* Koçak & Kemal, 2008, and *Tigidia* Simon, 1892 – contain both African and Indian species, none are known to have species occurring in both regions. If the Indian specimens are confirmed to be the African species, it may have been introduced through human-mediated dispersal. Future studies are required to determine whether this represents a natural range expansion or an introduced population, and if so, the possible mode of introduction. Overall, the subfamily Spartaeinae in India is now represented by one tribe, two subtribes, 10 genera, and 15 species.

These discoveries underscore the importance of continued exploratory surveys across India’s varied biogeographic zones. Despite their wide distribution across the Indian mainland, these genera have not yet been recorded from the Andaman and Nicobar Islands, indicating further unexplored areas for future research.

Acknowledgements

JTDC is grateful to Dr K.A. Subramanian, Officer-in-Charge, Southern Regional Centre, ZSI Chennai, for kindly allowing the use of the microscope facility and Dr Deepak Nallaswamy Veeraiyan, the Director of Academics, SIMATS, Saveetha University, Chennai, for necessary permissions to carry out the work. SS and PPS are grateful to Dr Dhriti Banerjee, Director of the Zoological Survey of India, for providing necessary facilities for completing this work. BGN and CCM thank T.B. Dinesh and IruWay Hola (Janastu) for allowing sample collection from their property. Rishikesh Tripathi is thanked for providing images of *Portia labiata*. Y.T. Lohit, Naveen Iyer, Shashi Kumar, S. Asha, and Arun Kumar are thanked for their support during the field work. We extend our sincere thanks to the editor and the two reviewers for their constructive comments and suggestions on the manuscript.

References

- Ahmed J., Satam Y., Khalap R. & Mohan K. 2015. First record of *Portia albimana* (Simon, 1900) from Maharashtra, Mumbai (Araneae: Salticidae: Spartaeinae). *Peckhamia* 129.1: 1–6.
- Asima A., Caleb J.T.D. & Prasad G. 2024. On a collection of jumping spiders (Araneae: Salticidae) from the Shendurney Wildlife Sanctuary, India. *European Journal of Taxonomy* 932: 252–270.
<https://doi.org/10.5852/ejt.2024.932.2531>
- Caleb J.T.D. 2019. *An Annotated Checklist of Jumping Spiders (Araneae: Salticidae) of India*. AkiNik Publications, New Delhi.
- Caleb J.T.D. 2020. Arachnida: Spiders (Araneae). In: Chandra K., Raghunathan C. & Mao A.A. (eds) *Biodiversity Profile of East Kolkata Wetlands*: 84–89 + 1–326. Jointly published by the Director, Zoological Survey of India, Kolkata and East Kolkata Wetlands Management Authority, Department of Environment, Government of West Bengal, Kolkata.
- Caleb J.T.D. & Sankaran P.M. 2025. *Araneae of India*. Version 2025. Available from <https://www.indianspiders.in> [accessed 27 Jan. 2025].
- Caleb J.T.D., Acharya S. & Kumar V. 2018. From a century ago: a new spartaeine species from the Eastern Himalayas (Aranei: Salticidae). *Arthropoda Selecta* 27 (3): 232–236.
<https://doi.org/10.15298/arthsel.27.3.06>
- Jose A., Tripathi R. & Sudhikumar A.V. 2023. First records of the genera *Anarrhotus* Simon, 1902 and *Gelotia* Thorell, 1890 from India (Araneae: Salticidae). *Peckhamia* 299.1: 1–7.
- Lin Y.J. & Li S.Q. 2020. Two new genera and eight new species of jumping spiders (Araneae, Salticidae) from Xishuangbanna, Yunnan, China. *ZooKeys* 952: 95–128.
<https://doi.org/10.3897/zookeys.952.51849>
- Logunov D.V. & Azarkina G.N. 2008. New species of and records for jumping spiders of the subfamily Spartaeinae (Aranei: Salticidae). *Arthropoda Selecta* 16: 97–114.
- Maddison W.P. 2015. A phylogenetic classification of jumping spiders (Araneae: Salticidae). *Journal of Arachnology* 43 (3): 231–292. <https://doi.org/10.1636/ arac-43-03-231-292>
- Majumder S.C. 2005. Studies on some spiders from eastern coastal region of India. *Memoirs of the Zoological Survey of India* 20 (3): 1–57.
- Malamel J.J. 2018. Species increments to the Indian araneofauna (Arachnida, Araneae) from Pathiramanal Island. *Revista ibérica de Aracnología* 32: 112–116.
- Murphy J. & Murphy F. 1983. More about *Portia* (Araneae: Salticidae). *Bulletin of the British Arachnological Society* 6: 37–45.
- Peckham G.W. & Peckham E.G. 1903. New species of the family Attidae from South Africa, with notes on the distribution of the genera found in the Ethiopian region. *Transactions of the Wisconsin Academy of Sciences, Arts and Letters* 14 (1): 173–278.
Available from <https://www.biodiversitylibrary.org/page/54898295> [accessed 27 Jan. 2025].
- Roy T.K., Saha S. & Raychaudhuri D. 2016. A treatise on the jumping spiders (Araneae: Salticidae) of tea ecosystem of Dooars, West Bengal, India. *World Scientific News* 53 (1): 1–66.
- Simon E. 1900. Études arachnologiques. 30^e Mémoire. XLVII. Descriptions d'espèces nouvelles de la famille des Attidae. *Annales de la Société entomologique de France* 69: 27–61.
Available from <https://www.biodiversitylibrary.org/page/8249561> [accessed 27 Jan. 2025].

- Su K.F., Meier R., Jackson R.R., Harland D.P. & Li D.Q. 2007. Convergent evolution of eye ultrastructure and divergent evolution of vision-mediated predatory behaviour in jumping spiders. *Journal for Evolutionary Biology* 20 (4): 1478–1489. <https://doi.org/10.1111/j.1420-9101.2007.01335.x>
- Thorell T. 1887. Viaggio di L. Fea in Birmania e regioni vicine. II. Primo saggio sui ragni birmani. *Annali del Museo civico di Storia naturale di Genova* 25: 5–417.
Available from <https://www.biodiversitylibrary.org/page/29873553> [accessed 27 Jan. 2025].
- Thorell T. 1891. Spindlar från Nikobarerna och andra delar af södra Asien. *Kongliga svenska Vetenskaps-Akademiens Handlingar* 24 (2): 1–149.
Available from <https://www.biodiversitylibrary.org/page/34324437> [accessed 27 Jan. 2025]
- Thorell T. 1895. *Descriptive Catalogue of the Spiders of Burma, based upon the Collection made by Eugene W. Oates and Preserved in the British Museum*. British Museum (Natural History), London. <https://doi.org/10.5962/bhl.title.17492>
- Tripathi R., Kadam G., Asha T.J. & Sudhikumar A.V. 2023. First record of *Sparbambus* Zhang, Woon & Li, 2006 from India, with description of a new species (Araneae: Salticidae). *Zootaxa* 5352 (3): 447–450. <https://doi.org/10.11646/zootaxa.5352.3.10>
- Wanless F.R. 1978. A revision of the spider genus *Portia* (Araneae: Salticidae). *Bulletin of the British Museum (Natural History), Zoology* 34: 83–124.
Available from <https://www.biodiversitylibrary.org/page/2261817> [accessed 27 Jan. 2025].
- Wanless F.R. 1979. A revision of the spider genus *Brettus* (Araneae: Salticidae). *Bulletin of the British Museum (Natural History), Zoology* 35 (2): 183–190. <https://doi.org/10.5962/p.20453>
- Wanless F.R. 1981. A revision of the spider genus *Phaeacius* (Araneae: Salticidae). *Bulletin of the British Museum (Natural History), Zoology* 41: 199–212.
Available from <https://www.biodiversitylibrary.org/page/2365379> [accessed 27 Jan. 2025].
- Wanless F.R. 1984. A review of the spider subfamily Spartaeinae nom. n. (Araneae: Salticidae) with descriptions of six new genera. *Bulletin of the British Museum (Natural History), Zoology* 46: 135–205. <https://doi.org/10.5962/bhl.part.15964>
- Wanless F.R. 1985. A revision of the spider genera *Holcolaetis* and *Sonoita* (Araneae: Salticidae). *Bulletin of the British Museum (Natural History), Zoology* 48: 249–278. <https://doi.org/10.5962/bhl.part.23463>
- Wesołowska W. & Russell-Smith A. 2022. Jumping spiders from Ivory Coast collected by J.-C. Ledoux (Araneae, Salticidae). *European Journal of Taxonomy* 841: 1–143. <https://doi.org/10.5852/ejt.2022.841.1943>
- Wijesinghe D.P. 1991. New species of *Phaeacius* from Sri Lanka, Sumatra and the Philippines (Araneae: Salticidae). *Bulletin of the British Arachnological Society* 8: 249–255.
- WSC 2025. *World Spider Catalog*. Version 26. Natural History Museum Bern.
Available from <http://wsc.nmbe.ch> [accessed 27 Jan. 2025]. <https://doi.org/10.24436/2>
- Yang S.F., Liu W., Liu P. & Peng X.J. 2017. Five new species of *Spartaeus* Thorell, 1891 from China (Araneae: Salticidae). *Zootaxa* 4303 (3): 379–394. <https://doi.org/10.11646/zootaxa.4303.3.4>

Manuscript received: 15 October 2024

Manuscript accepted: 26 February 2025

Published on: 11 June 2025

Topic editor: Magalie Castelin
Section editor: Arnaud Henrard
Desk editor: Pepe Fernández

Printed versions of all papers are deposited in the libraries of four of the institutes that are members of the *EJT* consortium: Muséum national d'Histoire naturelle, Paris, France; Meise Botanic Garden, Belgium; Royal Museum for Central Africa, Tervuren, Belgium; Royal Belgian Institute of Natural Sciences, Brussels, Belgium. The other members of the consortium are: Natural History Museum of Denmark, Copenhagen, Denmark; Naturalis Biodiversity Center, Leiden, the Netherlands; Museo Nacional de Ciencias Naturales-CSIC, Madrid, Spain; Leibniz Institute for the Analysis of Biodiversity Change, Bonn – Hamburg, Germany; National Museum of the Czech Republic, Prague, Czech Republic; The Steinhardt Museum of Natural History, Tel Aviv, Israël.