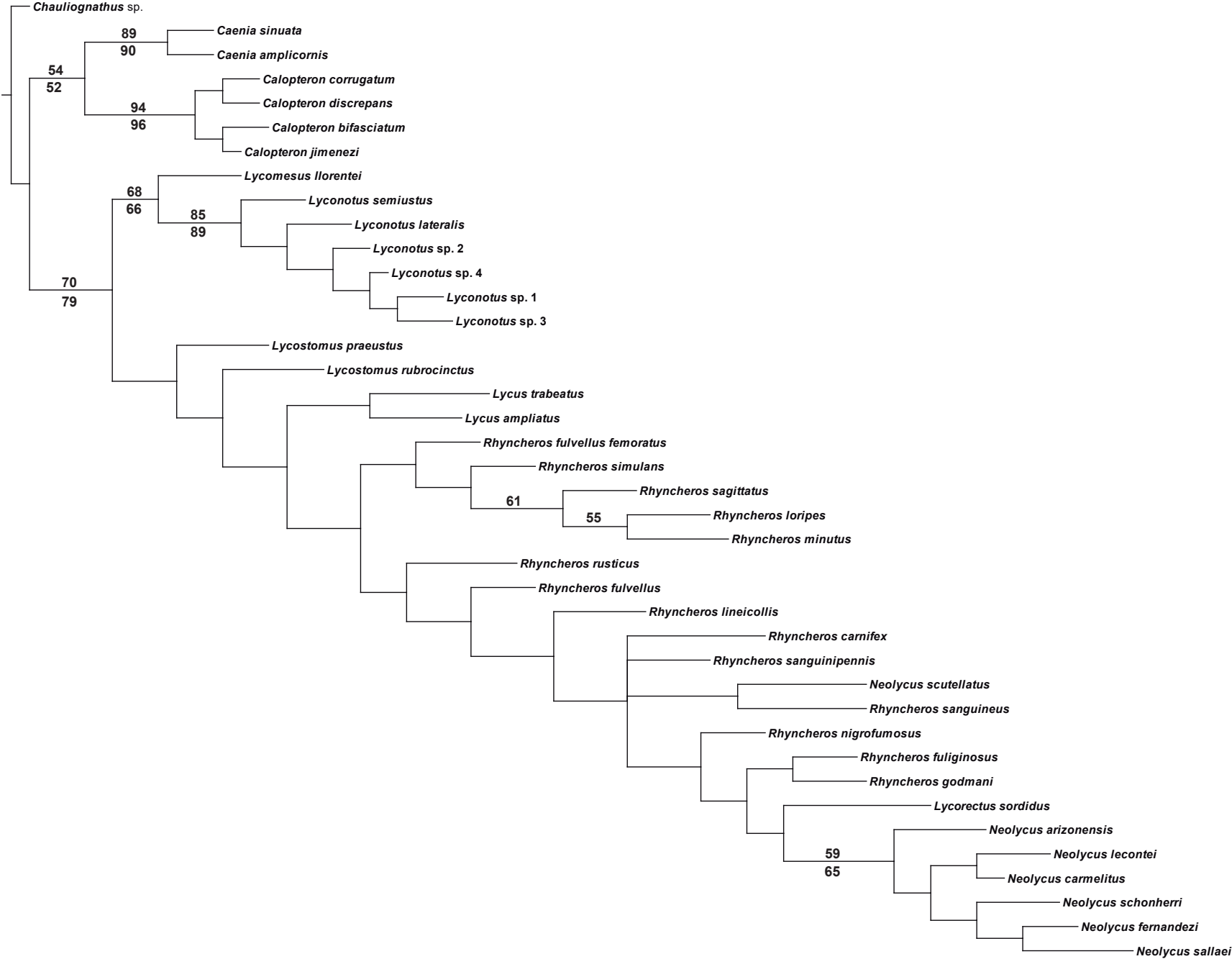


Supp. file 3.



**Fig. S1.** Strict consensus (L = 587; CI = 0.31; RI = 0.63) of the 4 most parsimonious trees (L = 581; CI = 0.32; RI = 0.63) using equal weights. Number above branches indicate Bootstrap values and numbers below the branches corresponds to the Jackknife values (> 50).