



Research article

[urn.lsid:zoobank.org:pub:809B9CDB-317A-4BFD-9D44-B413AE9D9C8E](http://urn.lsid:zoobank.org:pub:809B9CDB-317A-4BFD-9D44-B413AE9D9C8E)

## Two new species of shrimp of the Indo-West Pacific genus *Hamodactylus* Holthuis, 1952 (Crustacea: Decapoda: Palaemonidae)

Ivona HORKÁ<sup>1,4</sup>, Charles H.J.M. FRANSEN<sup>2</sup> & Zdeněk ĎURIŠ<sup>3,\*</sup>

<sup>1,3</sup>Department of Biology and Ecology, and Institute of Environmental Technologies,  
University of Ostrava, Chittussiho 10, CZ-71000 Ostrava, Czech Republic.

<sup>2</sup>Department of Taxonomy & Systematics, Naturalis Biodiversity Center,  
P.O. Box 9517, 2300 RA Leiden, The Netherlands.

<sup>4</sup>Department of Ecology, Charles University, Viničná 7, CZ-12844 Prague, Czech Republic.

\* Corresponding author: [zdenek.duris@osu.cz](mailto:zdenek.duris@osu.cz)

<sup>1</sup> [ivona.horka@osu.cz](mailto:ivona.horka@osu.cz)

<sup>2</sup> [charles.fransen@naturalis.nl](mailto:charles.fransen@naturalis.nl)

<sup>1</sup> [urn.lsid:zoobank.org:author:CCA47494-EA9C-46D9-B579-90772B584F35](http://urn.lsid:zoobank.org:author:CCA47494-EA9C-46D9-B579-90772B584F35)

<sup>2</sup> [urn.lsid:zoobank.org:author:08C8BF56-A737-4B4F-BC80-56333AE6AB3A](http://urn.lsid:zoobank.org:author:08C8BF56-A737-4B4F-BC80-56333AE6AB3A)

<sup>3</sup> [urn.lsid:zoobank.org:author:0CF5D3F9-9663-4B76-BF91-713D9BE50BC3](http://urn.lsid:zoobank.org:author:0CF5D3F9-9663-4B76-BF91-713D9BE50BC3)

**Abstract.** Two new alcyonacean-associated species, *Hamodactylus paraqabai* sp. nov. from Papua New Guinea and the Great Barrier Reef and *H. pseudaqabai* sp. nov. from Indonesia and Malaysia, are described and illustrated. To evaluate the status of the new species and their relationship within the genus *Hamodactylus* Holthuis, 1952, we combined morphology and phylogenetic analyses based on the cytochrome *c* oxidase subunit I (COI) mitochondrial gene. Both new species are closely related, with their mutual genetic divergence reaching 3–4%. They are further most related to *Hamodactylus aqabai* Bruce & Svoboda, 1983, originally described from the Red Sea. Both new species are distinguished from all other congeners by the presence of multiple teeth distally on the cutting edges of the fingers of the first pereopods, and, in the case of *H. paraqabai* sp. nov., by a full reduction of the fixed finger on the second pereopod chela. In *H. pseudaqabai* sp. nov. the finger is greatly reduced to a small but distinct stub, and the telson bears only a single pair of dorsal spines, as in *H. aqabai*. A key for the identification of all six currently known species is proposed.

**Key words.** Palaemonidae, *Hamodactylus paraqabai* sp. nov., *Hamodactylus pseudaqabai* sp. nov., coral associates, identification key.

Horká I., Fransen C.H.J.M. & Ďuriš Z. 2016. Two new species of shrimp of the Indo-West Pacific genus *Hamodactylus* Holthuis, 1952 (Crustacea: Decapoda: Palaemonidae). *European Journal of Taxonomy* 188: 1–26. <http://dx.doi.org/10.5852/ejt.2016.188>

### Introduction

The genus *Hamodactylus* Holthuis, 1952 comprises at present four Indo-West Pacific species associated with corals, i.e., *H. aqabai* Bruce & Svoboda, 1983, *H. boschmai* Holthuis, 1952, *H. noumeae* Bruce, 1970

and *H. macrophthalmus* Fransen & Rauch, 2013. *Hamodactylus aqabai*, *H. boschmai* and *H. noumeae* are associated with octocorallian soft corals (Alcyonacea) (Bruce 1970b, 1981, 1983; Bruce & Svoboda 1983), whereas *H. macrophthalmus* was reported from hexacorallian hard corals (Scleractinia) (Fransen & Rauch 2013).

A series of specimens was recently obtained from material collected during research campaigns to Indonesia (1990), Malaysia (Semporna Marine Ecological Expedition, 2012), Australia (CReefs Lizard Island Expedition, the Great Barrier Reef, 2010) and Papua New Guinea (Papua Niugini Expedition, Madang, 2012). Those specimens, initially assigned to *H. aqabai*, were revealed to contain two new species, different from specimens of *H. aqabai* obtained by us from the northern Red Sea. The separation of those two new species is supported by morphological characters and molecular analyses. Both the new species are described and illustrated here, and their distinctions from *H. aqabai* and from other known congeners are discussed.

## Material and methods

The following abbreviations are used in the methods and descriptions of taxa:

- BI = Bayesian Inference
- COI = mitochondrial gene cytochrome *c* oxidase subunit I
- fcn = field collection number
- ML = Maximum Likelihood
- PCR = Polymerase chain reaction
- PoCL = Post orbital carapace length
- spm(s) = specimen(s)
- RL = rostrum length, measured from the posterior orbital margin to the distal end of the most anterior tooth of the rostrum
- SD = standard deviation
- TL = total length of the body measured from tip of the rostrum to the distal end of the telson (latter without posterior spines)

Abbreviated names of institutions:

- MNHN = Muséum national d'Histoire naturelle, Paris, France
- MSS = Marine Science Station, Aqaba, Jordan
- MTQ = Museum of Tropical Queensland, Townsville, Australia
- RMNH = Naturalis Biodiversity Center (formerly Rijksmuseum van Natuurlijke Historie), Leiden, The Netherlands
- UO = University of Ostrava, Czech Republic

## Sample collection

The shrimps of the genus *Hamodactylus* were collected in the Indo-West Pacific region (Lizard Island, Australia, 2010; Sabah, Malaysia, 2010; Indonesia, 1990, 1994, 1996, 2010; Madang Bay, Papua New Guinea, 2012) and in the Red Sea (Aqaba, Jordan, 2009) by hand net during scuba diving. Complete specimens were preserved in 80% ethanol for morphological studies and samples of tissues (abdominal muscle, pleopods or eggs) for molecular analysis in 96-99% ethanol. Voucher specimens are stored in the crustacean collections of RMNH, MTQ, MNHN and UO.

## DNA extraction, amplification and sequencing

Total genomic DNA was extracted from the shrimps' abdominal muscle tissues, pleopods or eggs using the DNeasy Blood & Tissue Isolation Kit (QIAGEN, Hilden, Germany) according to the manufacturer's instructions. Polymerase chain reactions were performed in 25 µl volumes containing 2 µl DNA template,

**Table 1.** Species used in the molecular analysis, with details on sampling locations, GenBank accession numbers (COI) and voucher identification numbers of specimens examined. AU = Australia; IN = Indonesia; JO = Jordan; MA = Malaysia; PNG = Papua New Guinea; \* = sequences obtained from GenBank.

Taxa	Sampling location	GenBank access. nr.	Voucher spec. reg. nr.
<b>Palaemonidae</b>			
<i>H. aqabai</i> Bruce & Svoboda, 1983	Aqaba (JO)	KR088750	UO Aq09-55
<i>H. boschmai</i> Holthuis, 1952	Sabah (MA)	KC633172*	RMNH.CRUS.D.53814
<i>H. boschmai</i> Holthuis, 1952	Sabah (MA)	KC633173*	RMNH.CRUS.D.53831
<i>H. boschmai</i> Holthuis, 1952	Sabah (MA)	KC633174*	RMNH.CRUS.D.53786
<i>H. macrophthalmus</i> Fransen & Rauch, 2013	Sulawesi (IN)	KC633177*	RMNH.CRUS.D.55048
<i>H. noumeae</i> Bruce, 1970b	Sabah (MA)	KC633176*	RMNH.CRUS.D.53812
<i>H. paraqabai</i> sp. nov., holotype	Madang (PNG)	KR088751	MNHN-IU-2013-11092
<i>H. paraqabai</i> sp. nov., paratype	Madang (PNG)	KR088752	MNHN-IU-2013-11090
<i>H. paraqabai</i> sp. nov.	Lizard Is. (AU)	KR088753	MTQ-33208
<i>H. paraqabai</i> sp. nov.	Lizard Is. (AU)	KR088754	MTQ-33218
<i>H. pseudaqabai</i> sp. nov., holotype	Sulawesi (IN)	KT598272	RMNH.CRUS.D.57195
<i>H. pseudaqabai</i> sp. nov.	Sabah (MA)	KC633175*	RMNH.CRUS.D.53969
<b>Outgroup</b>			
<i>Palaemonella rotumana</i> (Borradaile, 1898)	Lizard Is. (AU)	KR088755	MTQ-33176

0.3-0.4  $\mu$ M primers, 0.15 mM dNTP, 0.7 U/ $\mu$ L *Taq* polymerase, 10  $\times$  PCR buffer, 1.5-3 mM MgCl<sub>2</sub> and distilled water.

For the COI segments, PCR products were amplified using the universal primer pairs LCO 1490/HCO 2198 (Folmer *et al.* 1994). The thermal cycling profile conformed to the following parameters: 2.5 min at 94 °C for initial denaturing, followed by 40 cycles of 30 s at 90 °C, 1 min at 48 °C, 1 min at 72 °C, and a final extension step at 72 °C for 10 min. The PCR products were purified using GenElute PCR clean-up kit (Sigma, Aldrich, Germany). Sequencing reactions were performed using an ABI3730XL DNA Sequencer from Macrogen, Ins., Amsterdam. Partial segments of the COI mitochondrial gene (645 bp) were used for phylogenetic analysis and were deposited in GenBank (Table 1).

### Phylogenetic analysis

Forward and reverse sequences were manipulated with Chromas v2.4.1, and multiple sequence alignment was conducted with MUSCLE (Edgar 2004) using the default settings within the software package MEGA6 (Tamura *et al.* 2013). Overall 12 specimens of the genus *Hamodactylus* were covered in the phylogenetic analyses; 6 of them were obtained from GenBank (Table 1).

The software jModelTest 2.1.6 (Darriba *et al.* 2012) was used to evaluate the best-fitting substitution model using the Bayesian Information Criterion. Maximum likelihood (2,000 replications) was conducted in MEGA6 and the Bayesian analysis (SD of split frequencies < 0.05) using MrBayes v3.2.3 (Ronquist *et al.* 2012) via the on-line CIPRES Science Gateway v3.3 (Miller *et al.* 2010), both analyses

under the resultant Hasegawa-Kishino-Yano (HKY+I+G) model. The palaemonid shrimp *Palaemonella rotumana* (Borradaile, 1898) was used as outgroup. The number of base differences per site between COI gene sequences was calculated in MEGA6.

Phylogenetic relationships among reconstructed mtDNA haplotypes were estimated using a median-joining network (Bandelt *et al.* 1999) and drawn using NETWORK software (<http://www.fluxus-engineering.com/netwinfo.htm>).

## Results

### *Systematics*

Family Palaemonidae Rafinesque, 1815

Genus *Hamodactylus* Holthuis, 1952

#### **Generic diagnosis** (modified from Bruce 1994)

Small sized shrimps. Rostrum compressed, with high carina, dorsal margin generally elevated, dentate, ventral margin obsolete, lateral carinae feebly developed. Carapace smooth, glabrous; inferior orbital angle distinct, orbit feebly developed, supraorbital spines present or absent, antennal and hepatic spines present, anterolateral branchiostegite not produced. Abdomen smooth, glabrous, pleura all rounded. Telson with one or two pairs of small dorsal spines and three pairs of posterior spines. Antennule normal, flagella reduced. Antenna with basicerite unarmed, scaphocerite well developed. Eye well developed, elongate, cornea oblique. Epistome unarmed. Mandible without palp, molar process reduced, styliiform, with setose apex, incisor process expanded or normal, with 4–5 teeth distally; maxillula with bilobed palp, upper lacinia broad, lower lacinia slender; maxilla with simple palp, basal endite simple or bifid, coxal endite obsolete, scaphognathite well developed; first maxilliped with short, simple palp, basal endite broad, coxal endite obsolete, caridean lobe of exopod well developed, flagellum short or vestigial, epipod rounded or triangular, feebly bilobed; second maxilliped with normal endopod, dactylar segment reduced, exopod absent, coxa with rounded epipod, without podobranch; third maxilliped with ischiomeral segment fused to basis, normal or broadened, without exopod, coxa with small lateral plate, with or without arthrobranch. Fourth thoracic sternite without median process, posterior sternites broad. First pereopod slender, chelae with fingers feebly subspatulate, cutting edges unarmed or toothed distally, with thin denticulate lamella laterally on distal part. Second pereopods feebly developed, smaller than first pereopods, chela with fixed finger normal, unarmed, or partially to fully reduced in size. Ambulatory pereopods moderately robust, dactyls well developed, simple, with distinct unguis, propodi non-spinulate. Uropod with protopodite unarmed, exopod of uropod distolaterally with small or obsolete marginal tooth and movable spine more mesially.

#### **Distribution**

Widely distributed in the Indo-West Pacific region from the Red Sea to New Caledonia (e.g., Bruce 1981, 1982, 1983; Chace & Bruce 1993; Fransen & Rauch 2013).

#### **Ecology**

Reported in association with gorgonarians and alcyonaceans (Bruce 1970b, 1981, 1983; Bruce & Svoboda 1983); scleractinian coral (Fransen & Rauch 2013), from depths of 2–27.5 m (Bruce 1970b, 1983).

*Hamodactylus paraqabai* sp. nov.

[urn:lsid:zoobank.org:act:D50ED903-8CDF-4B68-BE54-8E4F2177FB2B](http://urn:lsid:zoobank.org:act:D50ED903-8CDF-4B68-BE54-8E4F2177FB2B)

Figs 1–5, 10B–C

**Etymology**

The specific name *paraqabai* is a noun composed of the prefix *para-* (from Greek: besides) and the adjective *-aqabai*, a species name used for *H. aqabai*, a closely similar species from the Red Sea.

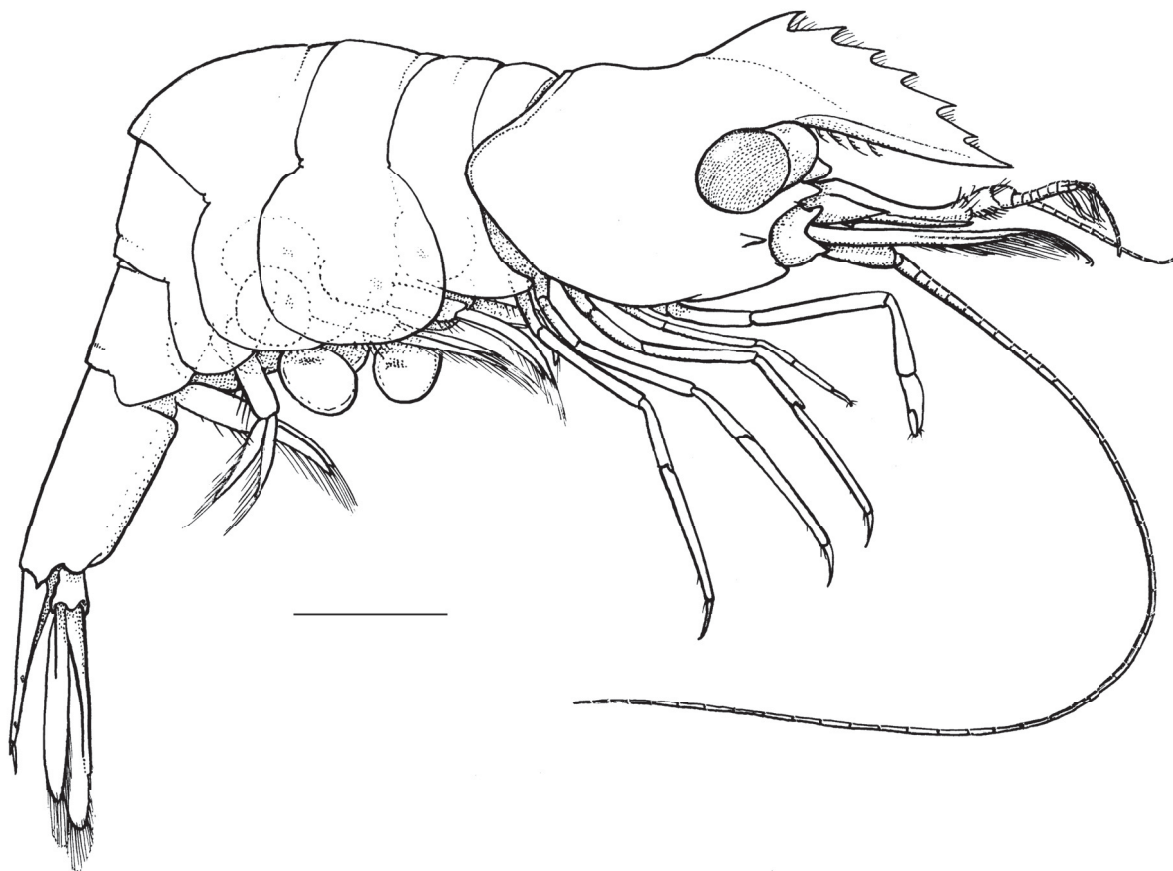
**Material examined**

**Holotype**

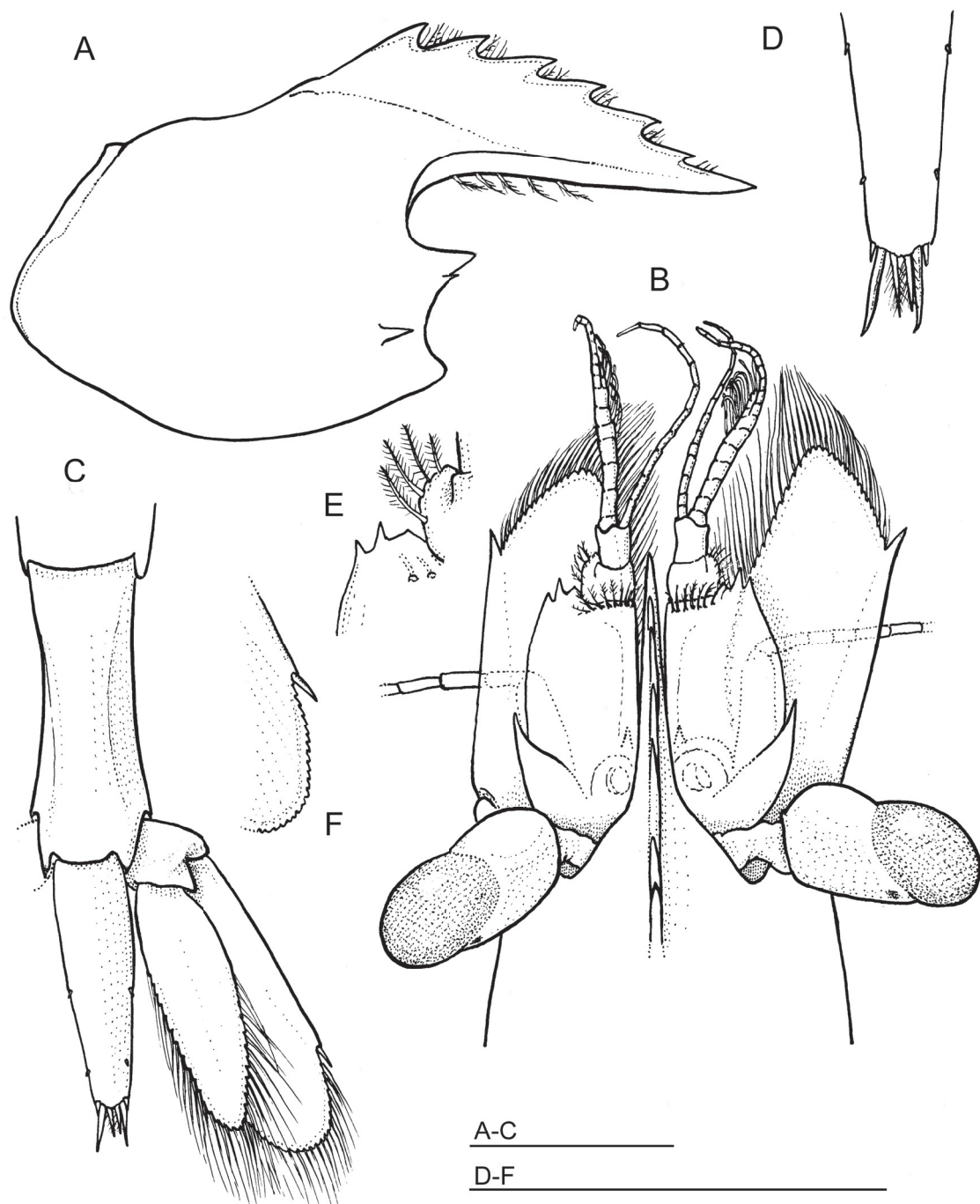
PAPUA NEW GUINEA: ovigerous ♀ (PoCL 1.5 mm), Madang, Krangket Is., stn PR3, 05°11.3' S 145°49.1' E, lagoon, depth 13 m, on *Nephthea* sp., 6 Nov. 2012, coll. Z. Ďuriš, fcn PNG12-17 (GenBank acc. nr. KR088751) (MNHN-IU-2013-11092).

**Paratypes**

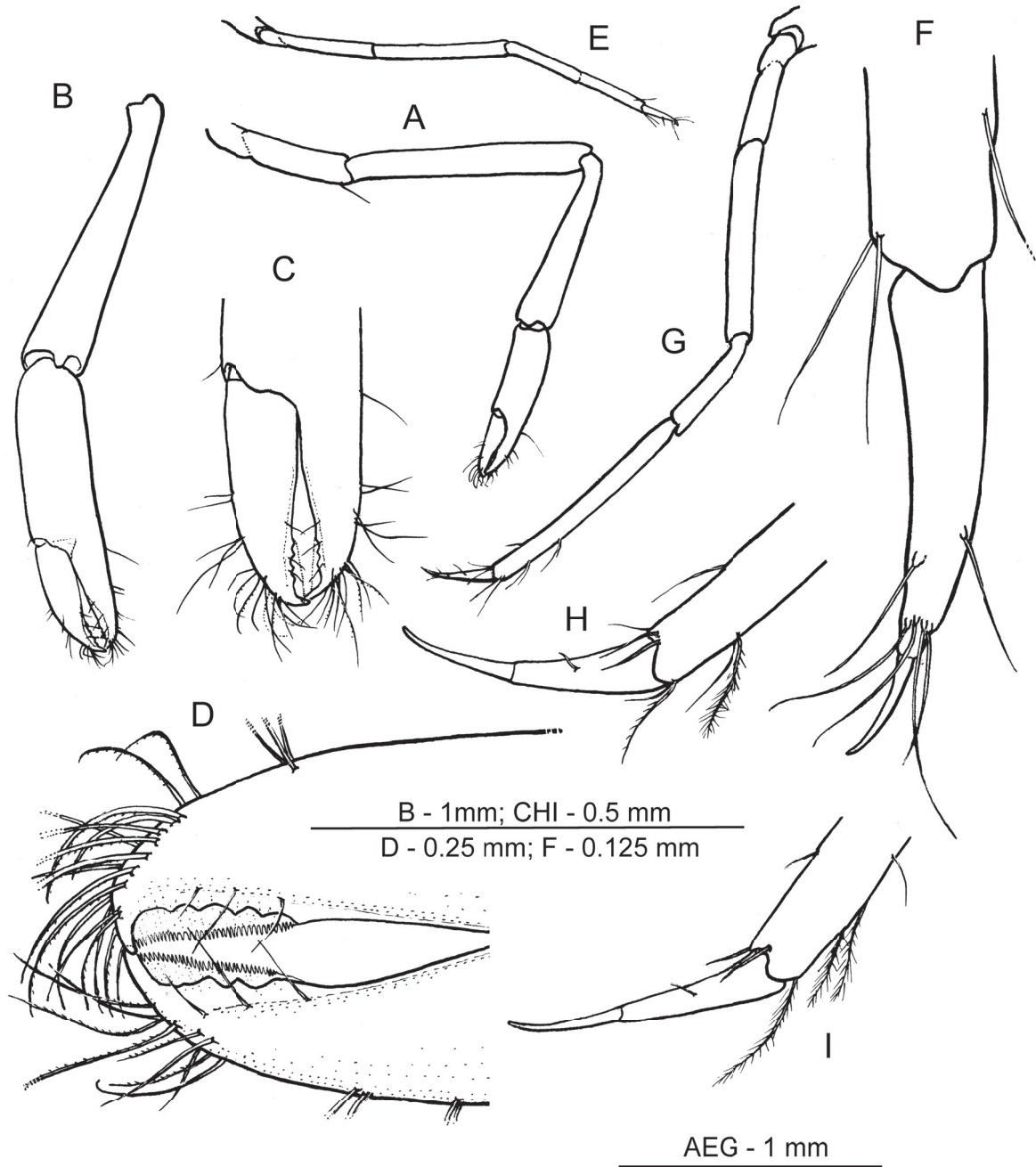
PAPUA NEW GUINEA: 1 ovigerous ♀ (PoCL 1.9 mm), same data as holotype (MNHN-IU-2013-10551); 1 ♀ (PoCL 1.6 mm, mouthparts dissected), Madang Resort, 05°12.5' S 145°48.5' E, stn PR227, on *Nephthea* sp., 10 Dec. 2012, coll. A.F. Berberian, leg. Z. Ďuriš, fcn PNG12-638 (GenBank acc. nr. KR088752) (MNHN-IU-2013-11090).



**Fig. 1.** *Hamodactylus paraqabai* sp. nov., ovigerous ♀, holotype (PoCL 1.5 mm; Madang, Papua New Guinea), habitus. Scale bar = 1 mm.



**Fig. 2.** *Hamodactylus paraqabai* sp. nov., ovigerous ♀, holotype (PoCL 1.5 mm; Madang, Papua New Guinea). **A.** Carapace and rostrum, lateral. **B.** Anterior cephalothorax and appendages, dorsal. **C.** Sixth abdominal segment, telson and uropod, dorsal. **D.** Posterior part of telson, dorsal. **E.** Antennule, detail of distolateral angle of proximal segment and lateral border of intermediate segment. **F.** Distolateral angle of uropodal exopod, dorsal. Scale bars = 1 mm.



**Fig. 3.** *Hamodactylus paraqabai* sp. nov., ovigerous ♀, holotype (PoCL 1.5 mm; Madang, Papua New Guinea). **A.** Right first pereiopod. **B.** Same as previous, chela and carpus. **C.** Same as previous, fingers. **D.** Same as previous, detail of denticulations. **E.** Second pereiopod, lateral. **F.** Same as previous, dactylus and distal propodus. **G.** Third pereiopod. **H.** Same as previous, dactylus and distal propodus. **I.** Fifth pereiopod, dactylus and distal propodus.

### Additional material

AUSTRALIA, Great Barrier Reef, Lizard Island, from soft branchy corals (Alcyonacea), coll. & leg. Z. Ďuriš: 1 ♀ (PoCL 1.3 mm), stn LI10-47, 14°41.8' S 145°27.0' E, North Point, South of Mermaid Cove, depth 9 m, on *Nephthea* sp., 1 Sep. 2010, fcn Au10-78B (GenBank acc. nr. KR088753) (MTQ-33208); 1 ♂ (PoCL 1.1 mm), stn LI10-59, 14°42.0' S 145°26.9' E, lagoon, depth 8.6 m, on *Nephthea* sp., 2 Sep. 2010, fcn Au10-85 (GenBank acc. nr. KR088754) (MTQ-33218).

### Description of holotype

Small sized shrimp, ovigerous female; specimen complete, with all appendages (Fig. 1).

Carapace smooth. Rostrum (Fig. 2A) well developed, exceeding intermediate segment of antennular peduncle (Fig. 2B); lamina deep, lateral carina situated slightly above straight, setose, toothless ventral margin; dorsal margin convex, elevated, strongly compressed, with six subequal teeth, of which first situated above level of posterior orbital margin. Supra-orbital and epigastric spines absent. Orbit obsolescent, inferior orbital angle acutely produced in lateral view. Antennal spine small and slender, marginal, situated closely below inferior orbital angle. Hepatic spine larger and more robust than antennal, situated just behind level of posterior orbital margin and well below level of antennal spine. Antero-lateral angle moderately produced, rounded.

Abdominal segments smooth (Fig. 1). First segment pleuron highly produced anteriorly, third segment not produced posterodorsally, sixth segment twice as long as deep. Pleura all broadly rounded. Posteroventral angle of sixth segment feebly produced, postero-lateral angle feebly acute.

Telson 0.8 of length of sixth abdominal segment and 3.2 times as long as maximum width (Fig. 2C). Lateral margins convex in anterior half, posteriorly converging. Two pairs of very small marginal dorsal spines, about 0.05 of telson length, present at 0.55 and 0.8 of telson length. Posterior margin (Fig. 2D) rounded, about half of anterior width, with three pairs of spines; lateral spines short but distinctly twice as long as dorsal spines. Intermediate spines largest, about 0.2 of telson length and 1.5 times length of more slender, setulose, submedian spines.

Eyes (Fig. 2B) well developed. Cornea ellipsoid, obliquely set on stalks; stalk swollen proximally, with distinct accessory pigment spot anterodorsally.

Antennular peduncle (Fig. 2B) normal, exceeding tip of rostrum by distal segment. Basal segment broad, 2 times as long as wide, with stylocerite slender, acute, reaching almost to middle of segment; lateral border convex, anterolateral margin slightly acutely produced mesially, with 2 acute distolateral teeth (Fig. 2E); medioventral margin with tooth in front of statocyst level. Intermediate and distal segments short, together equal to 0.3 of proximal segment length. Upper flagellum biramous, with first 7 segments fused, shorter free ramus 3-segmented and longer ramus consisting of about 10 slender segments. About 6 groups of aesthetascs present. Lower flagellum consisting of about 11–13 slender segments.

Antenna (Fig. 2B) with robust basicerite without lateral tooth. Carpocerite slender, short, reaching almost to middle of scaphocerite. Scaphocerite large, extending well beyond antennular peduncle, about 2.5 times as long as broad, with greatest width in midlength, distomedially angulated; lateral border almost straight, with acute distal tooth; lamina extending far beyond distolateral tooth.

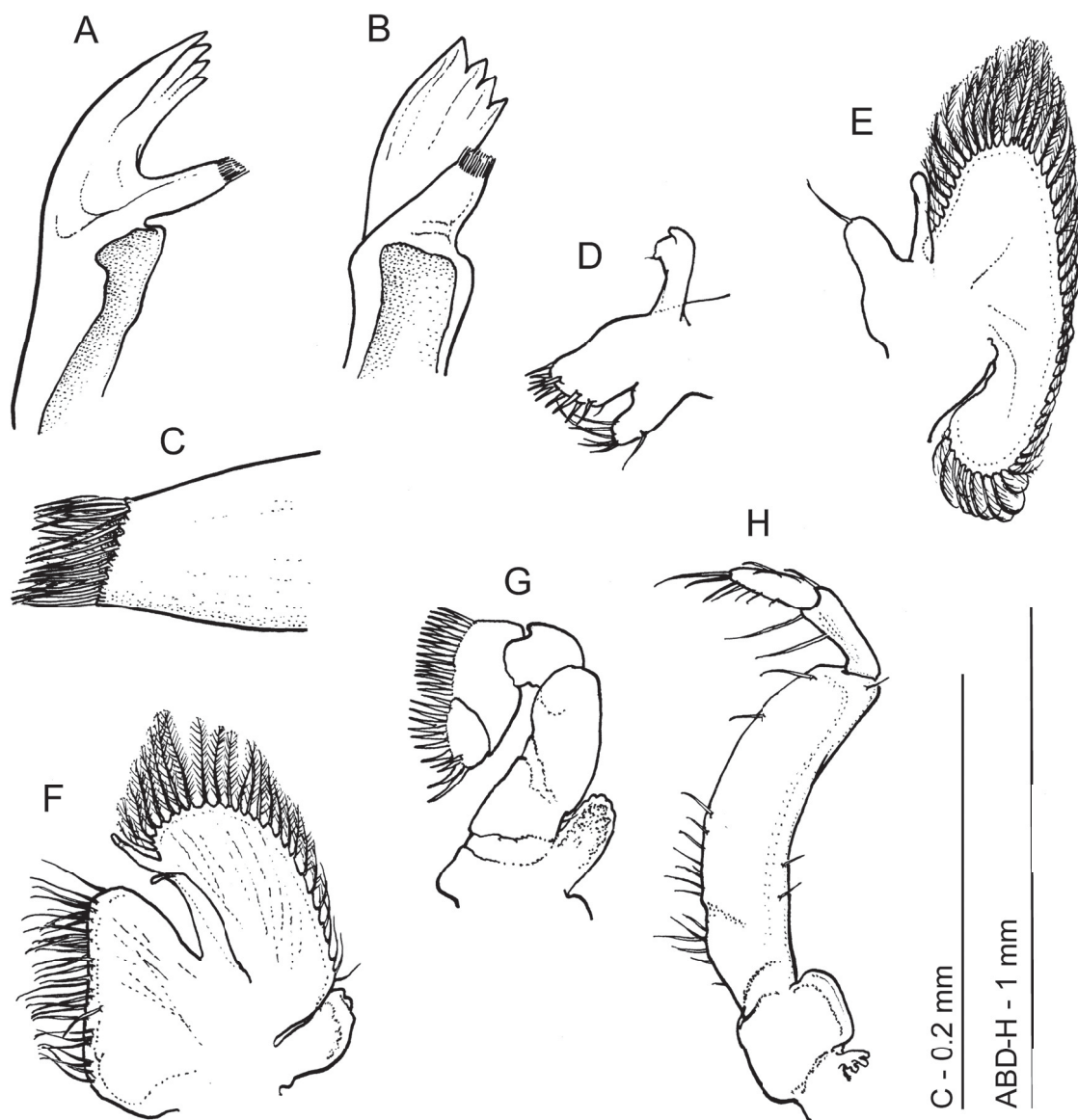
Fourth thoracic sternite unarmed.

First pereiopod (Fig. 3A–D) slender, reaching to end of scaphocerite. Chela with palm subcylindrical, slightly bowed and compressed, about 4 times as long as wide. Fingers about 0.75 of palm length; cutting edges gaping distally, bearing series of 5 small blunt teeth at distal third on dactylus, and 3 such



teeth on fixed finger; very thin denticulate lamella present laterally along latter series of teeth on both fingers, tip of fingers slender, hooked. Cleaning setae present proximally on palm and on disto-ventral end of carpus, latter being subequal to chela length and 6.5 times as long as wide distally. Merus about 1.3 times as long as carpus and almost twice length of ischium. Basis and coxa normal.

Second pereopods (Fig. 3E–F) greatly reduced, small, reaching almost to end of carpoperite, subequal and similar, resembling ambulatory pereopod. Chela without any trace of fixed finger; dactylus resembles that of walking legs. Unguis distinct, occupying distal 0.25 of dactylus length, corpus slender, 4.2 times as long as basal width, slightly curved, without accessory spines or teeth, long setae arising from distal and subdistal part of corpus. Propodus subcylindrical, unarmed, about 6.5 times as long as wide and 2



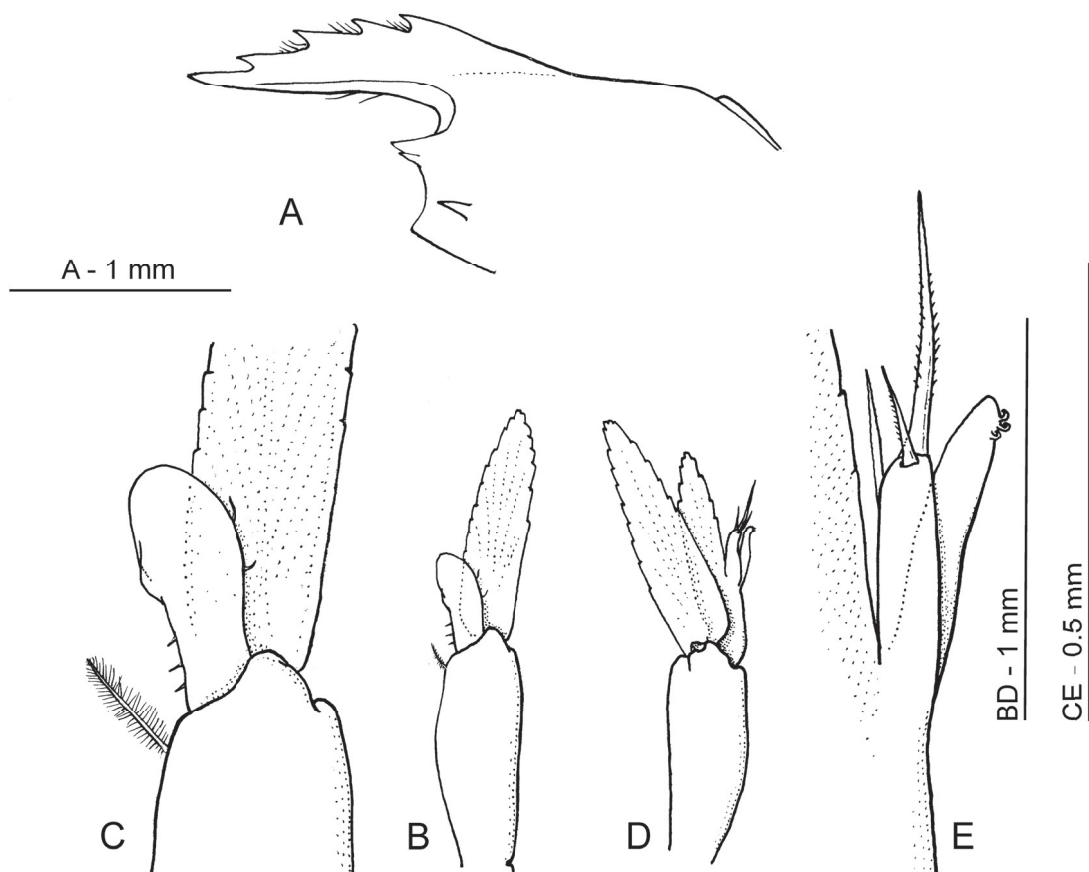
**Fig. 4.** *Hamodactylus paraqabai* sp. nov., ♀, paratype (PoCL 1.6 mm, Madang, Papua New Guinea, MNHN-IU-2013-11090), mouthparts. **A.** Mandible. **B.** Same as previous, turned. **C.** Same as previous, molar process. **D.** Maxillula. **E.** Maxilla. **F.** First maxilliped. **G.** Second maxilliped. **H.** Third maxilliped.

times length of dactylus; dactylus unarmed. Carpus, merus and ischium unarmed, lengths in ratio of 1.2, 1.0 and 1.6 times length of propodus. Basis and coxa normal.

Ambulatory pereiopods slender, distinctly longer and more robust than second pereiopods. Third pereiopod (Fig. 3G) exceeds tip of scaphocerite by dactylus. Dactylus (Fig. 3H) slender, uniformly tapering, unarmed and with a distinct unguis on distal 0.45 of length, total length about 5 times width near base. Propodus about 12 times as long as wide, 3 times length of dactyl, and devoid of spines. Carpus, merus and ischium 0.5, 0.8 and 0.5 of propodus length, unarmed. Fourth and fifth pereiopods similar, dactylus of fifth pereiopod (Fig. 3I) slightly more slender and straighter than that of third leg.

Uropods (Fig. 2C) slender, extending well beyond tip of telson. Protopodite unarmed laterally. Exopod about 3 times as long as wide, extending well beyond endopod, with lateral border almost straight, entire, terminating in small mobile spine (Fig. 2F). Endopod 3.3 times as long as wide.

Mouthparts (Fig. 4; dissected from female paratype MNHN-IU-2013-11090). Mandible (Fig. 4A–C) with reduced cylindrical molar process bearing a few brushes of setae distally (Fig. 4C). Incisor process slightly expanded distally, with four large teeth on truncated tip, of which lateral most enlarged. Palp absent.



**Fig. 5.** *Hamodactylus paraqabai* sp. nov., ♂ (PoCL 1.1 mm, Lizard Is., Australia, MTQ-33218). **A.** Carapace and rostrum, lateral. **B.** First pleopod. **C.** Same as previous, endopod. **D.** Second pleopod. **E.** Same as previous, appendices interna and masculina.

Maxillula (Fig. 4D) with slender, feebly bilobed palp, lower lobe bearing a small seta distally. Upper lacinia short and stout, truncate distally, with about 10 robust spines distally. Lower lacinia more slender, with group of long setae on truncate tip.

Maxilla (Fig. 4E) with distally tapering, non-setose palp. Basal endite simple, short, stout and blunt, with simple seta distally. Coxal endite obsolete, medial region slightly convex. Scaphognathite normal, widest centrally, about 2 times as long as broad, with more slender posterior lobe. Marginal plumose setae well developed.

First maxilliped (Fig. 4F) with slender, tapering, non-setose palp. Basal region broad and round, not distinctly separated from coxal region. Median margin straight, sparsely provided with slender setulose setae. Caridean lobe of exopod distinct, with plumose marginal setae; flagellum greatly reduced, devoid of setae, slightly overreaching caridean lobe. Epipod small, somewhat elongate, rounded distally.

Second maxilliped (Fig. 4G) with small dactylar segment, about 1.6 times as long as wide, convex medially, bearing row of stout, serrulate spines. Propodal segment large, twice as long as dactylar segment, twice as long as wide, with subrectangular distomedial angle. Medial margin broadly convex, with row of coarsely serrulate setae. Carpus short. Merus partly fused to ischium, ischium partly fused to basis, basis without exopod; combined segment stout, about twice as long as wide. Coxa produced medially, with small, suboval epipod laterally.

Third maxilliped (Fig. 4H) with broad antepenultimate segment, about 4 times as long as wide. Basis completely fused with ischiomerus, junction indicated medially by small knob; median margin sparsely provided with serrulate setae over proximal two thirds. Penultimate segment slender, about 3 times as long as wide, 0.33 of length of antepenultimate segment and with 2 slender, serrulate setae on medial border. Terminal segment 3 times as long as wide, slightly shorter than penultimate segment, with groups of serrulate setae medially and slender terminal setae. Exopod absent. Coxa not produced medially, with broadly rounded lateral lobe and small reduced arthrobranch laterally.

#### **Other specimens**

Females similar to holotype. Dorsal rostrum teeth varying from 4 (smaller specimen, PoCL 1.2 mm, damaged, lost) to 5, lamina shallower in smallest specimens, first pereopod fingers with 3–4 distal cutting teeth. Single male specimen available (Fig. 5) comparatively smaller and more slender than adult females; rostrum (Fig. 5A) more shallow, bearing 4 dorsal teeth; first male pleopod (Fig. 5B–C) with endopod almost half length of exopod, enlarged distally, with apex rounded, with 3 short simple setae proximally on medial border and 2 short setae more distally on lateral border; second pleopod (Fig. 5D–E) with endopod slightly shorter than exopod, with appendix masculina about as long as appendix interna, with two unequal distal serrulate setae and one simple seta subdistally on lateral margin.

#### **Measurements** (PoCL, RL; mm)

Ovigerous females: 1.9, 1.8; holotype: 1.5, 1.5. Other females 1.3–1.6, 1.2–1.4 (in female of PoCL 1.6, TL 9.5 mm). Male: 1.1, 1.0. Eggs (with eye spots): 0.54–0.65 × 0.40–0.45.

#### **Colouration** (Fig. 10B–C)

Males largely transparent, with diffuse yellow and white speckles, more dense on cephalothorax. Adult females more heavily coloured. Body generally transparent, faintly speckled with yellow and white colour, with yellow dots on base of the rostrum and on eyestalks, yellow colour more condensed to transverse bands on sides of each basis of antennae, two bands on carapace, and one wide band on each of 1<sup>st</sup> to 5<sup>th</sup> abdominal segments, all interspaced by faint white dots. Whitish path transversely on the tailfan articulations to the last abdominal segment. Anterior rostrum, antennal flagella, pereopods, the

sixth abdominal segment, and tailfan, predominantly transparent. One female from Papua New Guinea reddish coloured instead of yellow.

#### Host

Associated with branching soft corals of the genus *Nephthea* sp. (Fig. 10C) of the family Nephtheidae (Octocorallia: Alcyonacea).

#### Distribution

Up to date known from the Madang Lagoon, Papua New Guinea, and the Great Barrier Reef, Australia.

#### Remarks

See the Discussion.

#### *Hamodactylus pseudaqabai* sp. nov.

[urn:lsid:zoobank.org:act:5306FF2F-64E9-47A5-8554-393952257DEF](http://urn:lsid:zoobank.org:act:5306FF2F-64E9-47A5-8554-393952257DEF)

Figs 6–9, 10D

*Hamodactylus aqabai* – Fransen 2012: 102. — Fransen & Rauch 2013: 287 (Tab. 1), 288 (comparative material).

*non H. aqabai* – Bruce & Svoboda 1983: 26, figs 10–14.

#### Etymology

The specific name *pseudaqabai* is a noun combined from the prefix *pseudo-* (Greek: false) and the suffix *-aqabai*, the species name used for *H. aqabai*, a very similar species from the Red Sea.

#### Material examined

##### Holotype

INDONESIA: ovigerous ♀ (PoCL 2.0 mm), North Sulawesi, Lembeh Strait, Kelapadua, 1°26.1' N 125°12.6' E, stn LEM.12, depth 4 m, on nephtheid Alcyonacea, 4 Feb. 2012, coll. C.H.J.M. Fransen (GenBank acc. nr. KT598272) (RMNH.CRUS.D.57195).

##### Allotype

INDONESIA: 1 ♂ (PoCL 1.4 mm), same data as holotype (RMNH.CRUS.D.57007).

##### Paratypes

INDONESIA: 2 ovigerous ♀♀ (PoCL 1.7 and 1.8 mm), 1 non ovigerous ♀ (PoCL 1.6 mm), 7 ♂♂ (PoCL 0.9–1.1 mm), 7 juveniles (PoCL 0.7–0.9 mm), Moluccas, Ambon, W side of Pombo Island, stn RBE.16, depth 10 m, diving, from nephtheid Alcyonacea (host preserved), 15–17 Nov. 1990, coll. C.H.J.M. Fransen (RMNH.CRUS.D.48243); 1 ♂ (PoCL 1.7 mm), SW Sulawesi, Spermonde Archipelago, S side, depth 10 m, scuba diving, on purple *Nephthea*, 26 Sep. 1994, leg. C.H.J.M. Fransen (RMNH.CRUS.D.46369); 1 non ovigerous ♀ (PoCL 1.4 mm), Moluccas, Ambon, Outer bay, N coast W of Sahuru, Stn MAL.03, 03°40' S 128°09' E, depth 10 m, diving, on *Nephthea* sp., 5 Nov. 1996, leg. C.H.J.M. Fransen (RMNH.CRUS.D.47481).

MALAYSIA: 1 ovigerous ♀ (PoCL 2.2 mm), Ligitan reef N2, Semporna area, Sabah, stn SEM.09b, 04°15.0' N 118°37.9' E, depth 10 m, on nephtheid Alcyonacea, 1 Dec. 2010, coll. Nina Ho (GenBank acc. nr. KC633175) (RMNH.CRUS.D.53969).

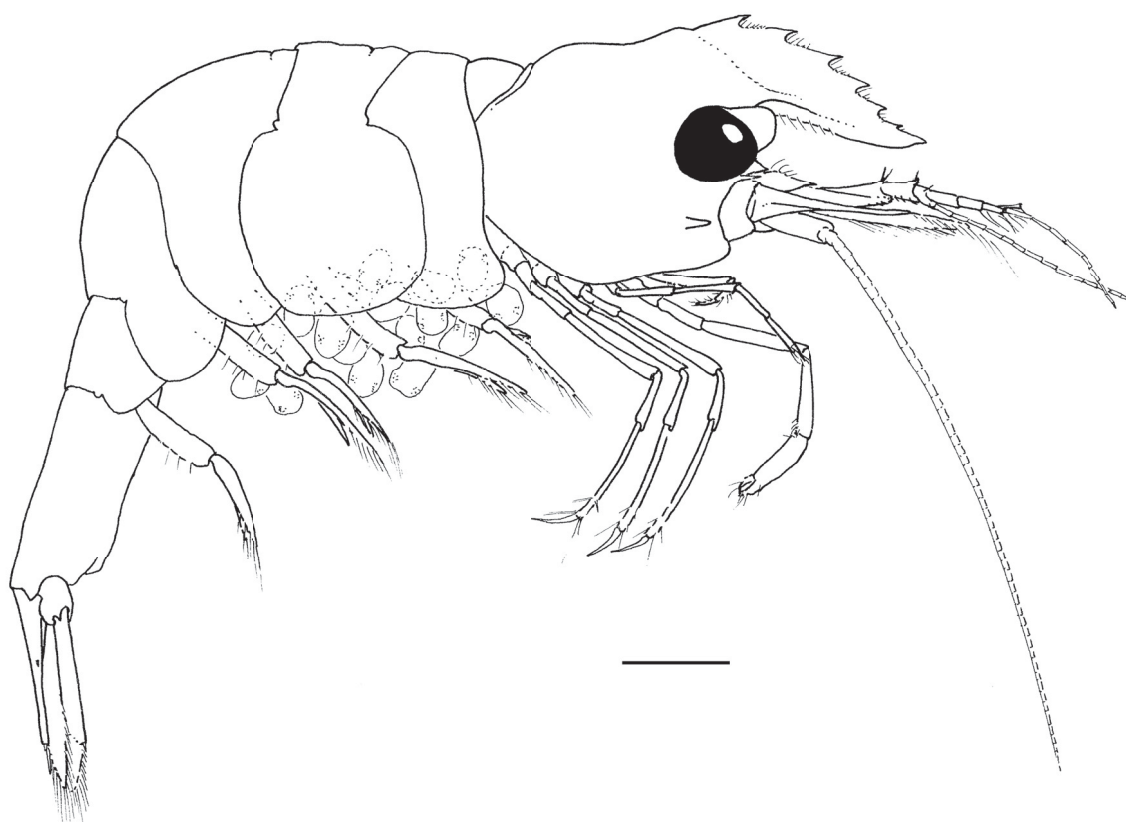
**Description of holotype** (ovigerous ♀)

Small sized shrimp with slender pereopods (Fig. 6).

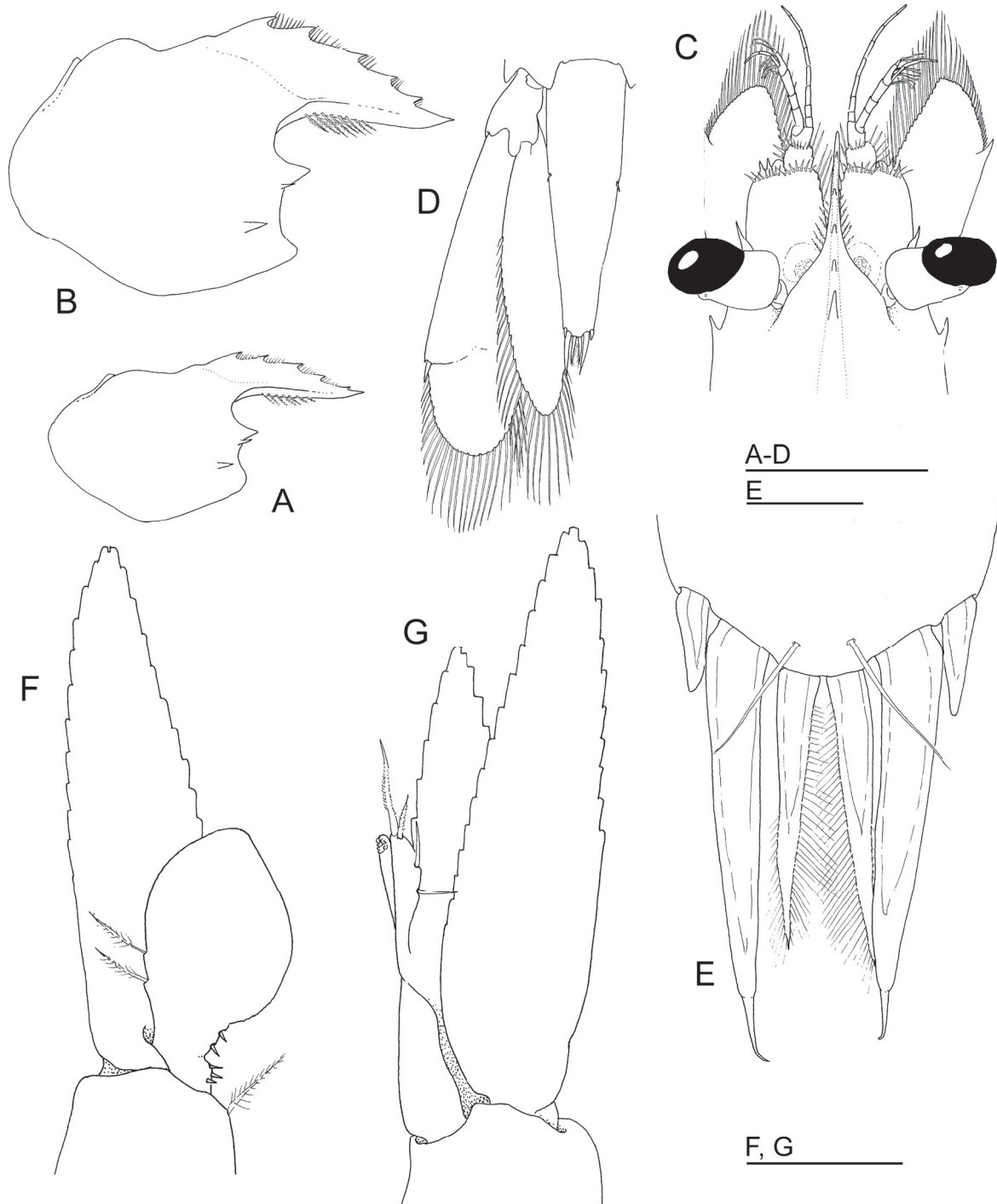
Carapace smooth. Rostrum well developed, almost reaching distal margin of antennular peduncle (Fig. 7A–C), lamina deep, lateral carina situated near to slightly convex, setose, toothless ventral margin; dorsal margin convex, elevated, strongly compressed, with 6 subequal teeth, with first one situated above level of posterior margin of orbit. Supra-orbital and epigastric spines absent. Antennal spine small and slender, marginal, situated closely below inferior orbital angle. Hepatic spine larger and more robust than antennal spine, situated just behind level of posterior orbital margin and well below level of antennal spine. Orbit obsolescent, inferior orbital angle well developed, acutely produced in lateral view. Antero-lateral angle of carapace moderately produced.

Abdominal segments smooth (Fig. 6), with all pleurae broadly rounded posteroventrally. First segment pleuron highly produced anteriorly, third segment not produced posterodorsally, fifth segment dorsal length about half length of sixth segment; latter twice as long as deep, with posteroventral angle feebly produced and postero-lateral angle subtriangular, pointed.

Telson (Fig. 7D–E) 0.8 times as long as sixth abdominal segment and 3.2 times as long as maximum width; lateral margins converge posteriorly, feebly over anterior half and more strongly over posterior



**Fig. 6.** *Hamodactylus pseudaqabai* sp. nov., ovigerous ♀, holotype (PoCL 2.0 mm, N. Sulawesi, RMNH. CRUS.D.57195), habitus, lateral view. Scale bar = 1 mm.

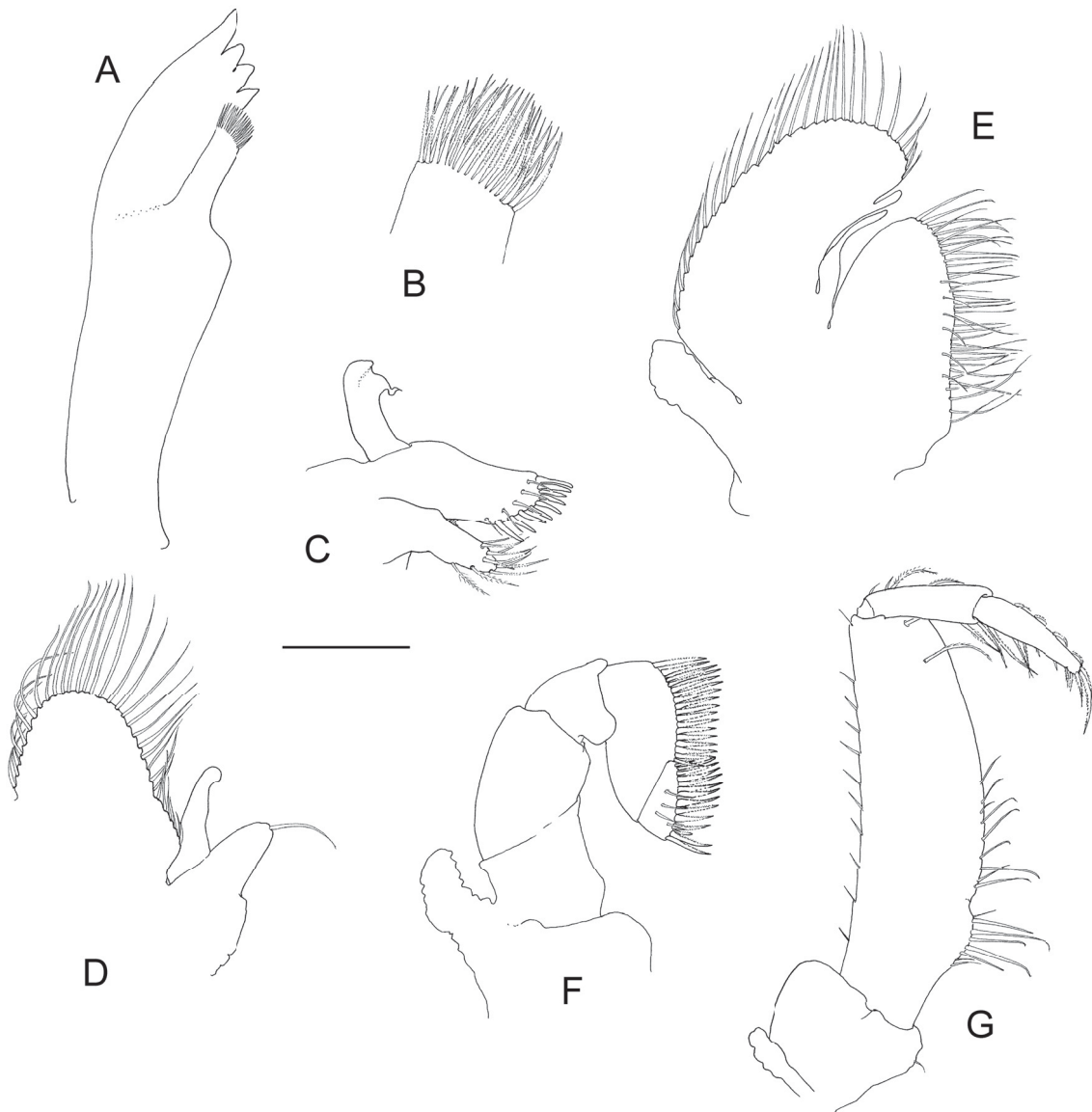


**Fig. 7.** *Hamodactylus pseudaqabai* sp. nov., ♂, allotype (PoCL 1.4 mm, N. Sulawesi, RMNH. CRUS.D.57007) (A, F–G), and ovigerous ♀ (PoCL 2.2 mm, Sabah, Malaysia, RMNH.CRUS.D.53969) (B–E). **A–B.** Carapace and rostrum, lateral view. **C.** Anterior carapace and appendages, dorsal view. **D.** Tail fan, dorsal view. **E.** Same as previous, tip of telson. **F.** First male pleopod. **G.** Second male pleopod. Scale bars: A–C = 2 mm; D = 1.25 mm; E = 0.25 mm; F–G = 1 mm.

half. One pair of very small marginal dorsal spines present at about 0.42 of telson length. Posterior margin feebly angular, about one third of anterior width, with three pairs of spines. Lateral spines short, but distinctly longer than dorsal spines. Intermediate spines well developed, 0.15 of telson length and 1.5 times length of more slender submedian spines, which are finely plumose.

Eyes (Fig. 7C) well developed. Cornea globular, obliquely set on proximally swollen stalks, with distinct accessory pigment spot posteriorly.

Antennular peduncle (Fig. 7C) exceeding tip of rostrum by  $\frac{1}{3}$  length of distal segment. Proximal segment broad, 1.6 times as long as wide. Stylocerite slender and acute, reaching almost to middle



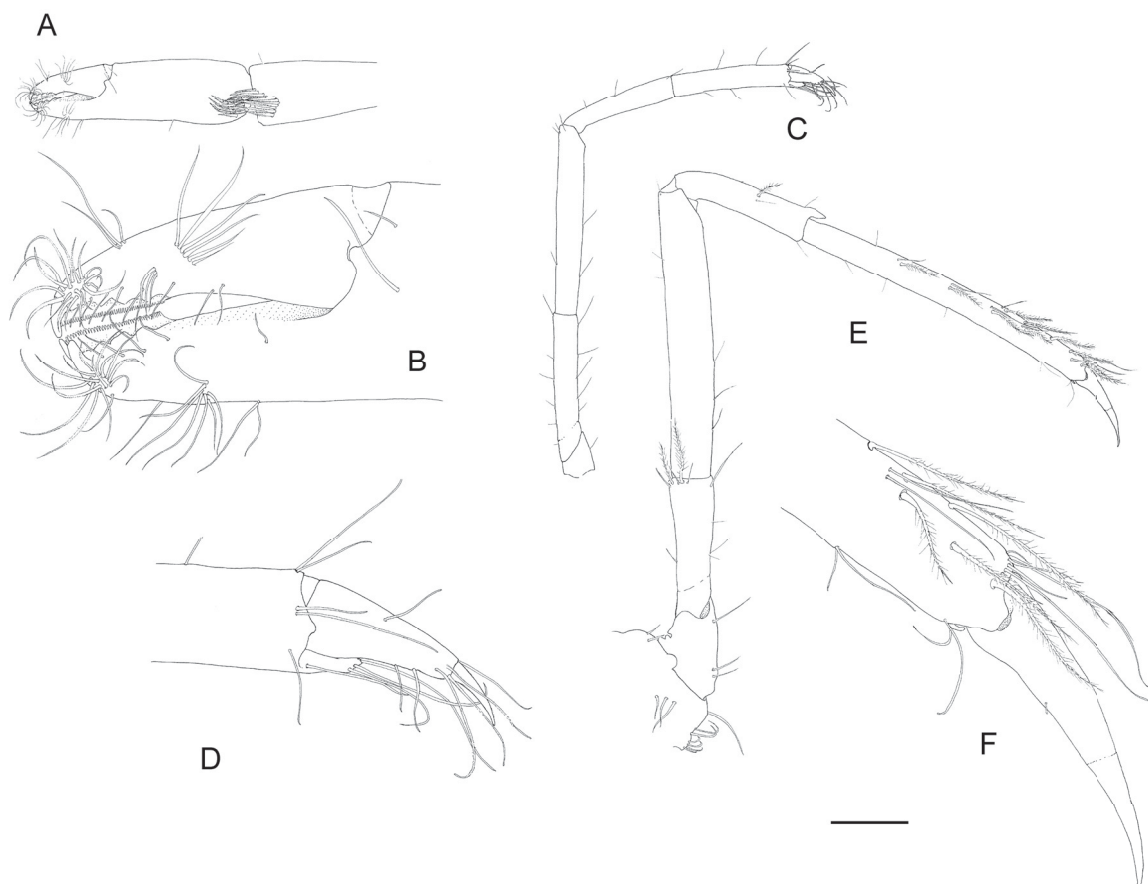
**Fig. 8.** *Hamodactylus pseudaqabai* sp. nov., ovigerous ♀, paratype (PoCL 2.2 mm, Sabah, Malaysia, RMNH.CRUS.D.53969), mouthparts. **A.** Left mandible, ventral view. **B.** Same as previous, detail of molar process. **C.** Right maxillula, ventral view. **D.** Right maxilla, ventral view, posterior lobe of scaphognathite lost in dissection. **E.** Right first maxilliped, ventral view. **F.** Right second maxilliped, ventral view. **G.** Right third maxilliped, ventral view. Scale bars: A, C-G = 1 mm; B = 0.25 mm.

of segment. Lateral border feebly convex and anterolateral margin slightly produced, bearing 4 acute teeth and numerous setae. Medial ventral margin with tooth at about third of length. Statocyst normally developed and contains a granular statolith. Intermediate and distal segments short, together equal to 0.34 of proximal segment length. Upper flagellum biramous, with first three segments of each ramus fused. Shorter free ramus indistinctly segmented and longer ramus consists of about 9 slender segments, five groups of aesthetascs present, lower flagellum slightly longer than upper flagellum, with about 13 segments.

Antenna (Fig. 7C) with robust basicerite, without lateral tooth. Ischiocerite and merocerite normal. Carpocerite slender, reaching to middle of scaphocerite. Scaphocerite large and broad, lamella extends well beyond antennular peduncle. Lateral border almost straight and ends in an acute distal tooth. Lamella extends far beyond tooth, feebly angulated distomedially, about 2.2 times as long as broad, with greatest width at about one third of its length.

Fourth thoracic sternite unarmed.

Mouthparts (Fig. 8; dissected from Malayan ovigerous female paratype). Mandible (Fig. 8A–B) rather feeble, with cylindrical molar process (Fig. 8B) bearing a few brushes of setae distally. Incisor process of normal size, with four teeth distally, of which lateral most enlarged. Mandible without palp.



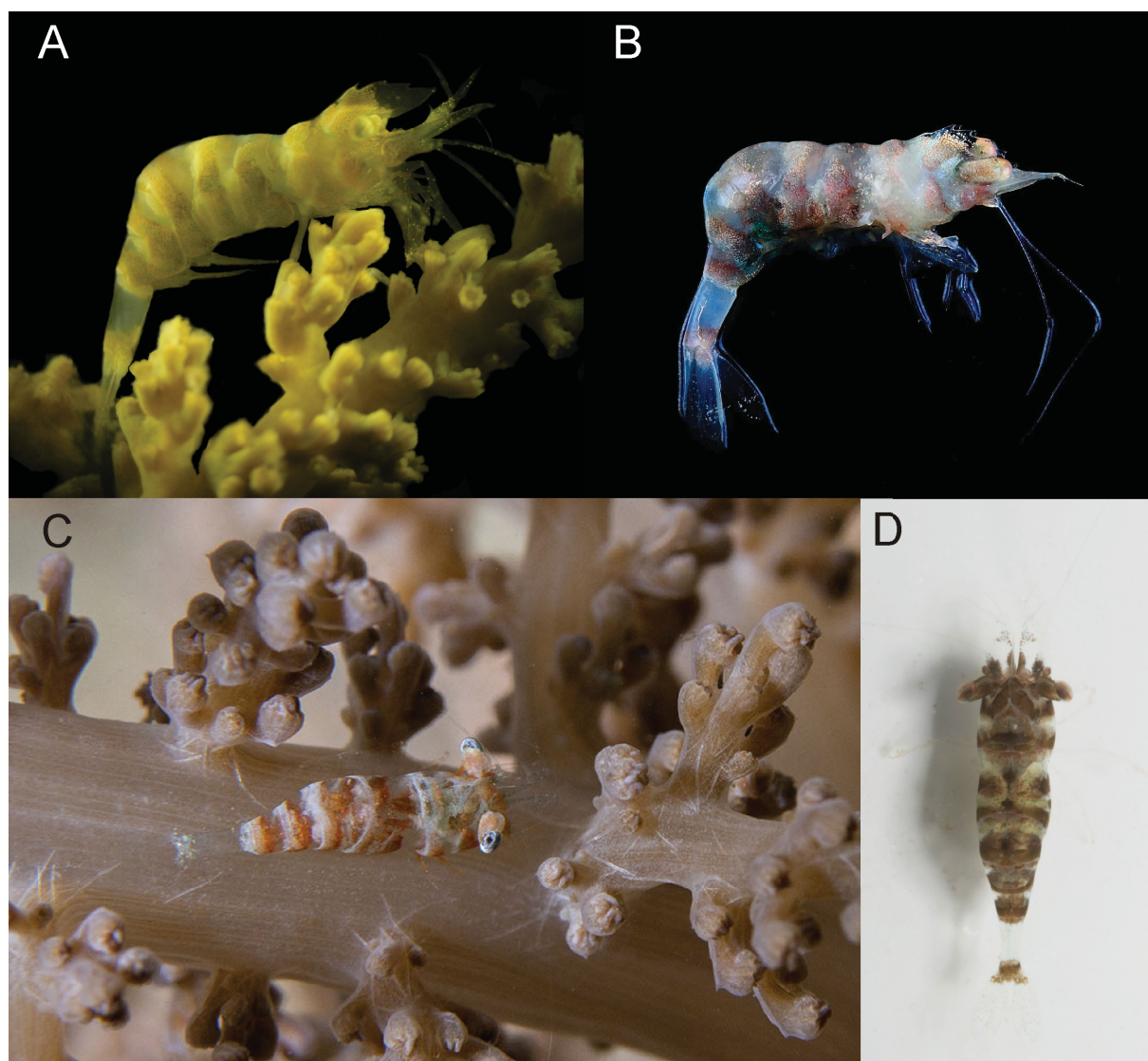
**Fig. 9.** *Hamodactylus pseudaqabai* sp. nov., ovigerous ♀, paratype (PoCL 2.2 mm, Sabah, Malaysia, RMNH.CRUS.D.53969). **A.** Chela of left first pereiopod. **B.** Same as previous, detail of fingers. **C.** Right second pereiopod. **D.** Same as previous, detail of chela. **E.** Right third pereiopod. **F.** Same as previous, dactylus and distal part of propodus. Scale bars: A, C, E = 1 mm; B, D, F = 0.25 mm.



Maxillula (Fig. 8C) with slender, feebly bilobed palp, lower lobe bearing small seta distally. Upper lacinia rather short and stout, with single row of robust simple spines and few spinose setae distally. Lower lacinia slender, with several slender serrulate setae distally.

Maxilla (Fig. 8D) with tapering, non-setose palp. Basal endite simple, short, stout and blunt, with simple seta distally. Coxal endite obsolete, medial region slightly convex. Scaphognathite normal, posterior lobe lost in dissection. Marginal plumose setae well developed.

First maxilliped (Fig. 8E) with, slender, tapering, non-setose palp. Basal region broad and round, not distinctly separated from coxal region. Median margin sparsely provided with slender, setulose setae.



**Fig. 10.** Colour pattern of three relatives of the genus *Hamodactylus*. — **A.** *H. aqabai* Bruce & Svoboda, 1983, ovigerous ♀ (UO Aq09-55) on alcyonacean coral *Nephthea* sp., Aqaba, Red Sea. — **B–C.** *H. paraqabai* sp. nov., ovigerous ♀♀, Madang, Papua New Guinea, on *Nephthea* sp. B. Holotype (MNHN-IU-2013-11092). C. Paratype (MNHN-IU-2013-11090). — **D.** *H. pseudaaqabai* sp. nov., ovigerous ♀, holotype, N. Sulawesi, Indonesia (RMNH.CRUS.D.57195). Photos: Z. Ďuriš (A), T.-Y. Chan (B), A.F. Berberian (C), C.H.J.M. Fransen (D).

Caridean lobe distinct, with coarsely setulose, plumose marginal setae. Flagellum of exopod greatly reduced, devoid of setae. Epipod small, rounded.

Second maxilliped (Fig. 8F) with small triangular dactylar segment, about 1.6 times as long as wide, convex medially, bearing row of stout, biserrulate spines. Propodal segment large, twice as long as dactylar segment, twice as long as wide, with subrectangular distomedial angle; medial margin almost straight, with row of coarsely serrulate setae. Carpus short. Merus partly fused to ischium; ischium partly fused to basis; basis without exopod. Coxa not produced medially, with small, suboval epipod laterally.

Third maxilliped (Fig. 8G) with broad antepenultimate segment, about three times as long as proximal width. Basis completely fused with ischiomerus, junction indicated medially by small knob. Median margin sparsely provided with simple setae over proximal two thirds. A row of five long setulose setae present distally, submarginally. Penultimate segment slender, 2.9 times as long as wide, 0.36 of length of antepenultimate segment and with few slender, setulose setae distally on medial border. Terminal segment five times as long as wide, 1.1 times length of penultimate segment, with few groups of short, serrulate setae medially and slender, simple terminal setae. Exopod absent. Coxa feebly produced medially, with rounded epipod laterally. Multilamellar arthrobranch present laterally.

First pereopod (Fig. 9A–B) slender, reaching to end of scaphocerite. Chela with palm subcylindrical, slightly bowed and compressed, about 2.3 times as long as wide. Fingers short, 0.33 of palm length, feebly subspatulate. Cutting edges gape proximally, very thin denticulate lamella laterally in distal third, with series of 4 blunt teeth medially. Tip of dactylus with distinct unguis, smaller spine present laterally. Cleaning setae present proximally on palm and on distoventral end of carpus, latter 1.2 times as long as chela, 5.0 times as long as wide and moderately wider distally. Merus about 1.2 times as long as carpus and twice length of ischium. Basis normal. Coxa with very small, medial setose process.

Second pereopods (Fig. 9C–D) greatly reduced, equal and similar, extending slightly beyond carpoperite with fingers. Chela with strongly reduced fixed finger, about third length of corpus of dactylus, distally acute, with several long setae. Dactylus resembles that of an ambulatory pereopod. Unguis distinct and corpus without accessory spines or teeth. Setae arise from anterior, distoventral and extreme distolateral aspects of corpus, which is about 2.3 times as long as wide and 2.3 times as long as unguis. Propodus subcylindrical, about 5.4 times as long as wide centrally and 2.3 times length of dactylus. Propodus without spines. Carpus, merus and ischium unarmed, lengths in ratio of 0.9, 1.6 and 1.1 times length of propodus. Basis and coxa normal.

Ambulatory pereopods slender, distinctly more robust than second pereopods. Third pereopod (Fig. 9E–F) not exceeding scaphocerite. Dactylus slender, uniformly tapering, unarmed and with indistinct unguis. Total length about five times width near base. Propodus about twelve times as long as wide, 4.0 times length of dactylus, devoid of spines except for blunt, short ventrodistal spine, with series of plumose setae dorsolaterally. Carpus, merus and ischium 0.43, 0.92 and 0.45 of propodus length, unarmed. Fourth and fifth pereopods similar to third.

Pleopods well developed. Marginal plumose setae of exopod and endopod coarsely serrulate.

Uropods (Fig. 7D) slender and extend well beyond tip of telson (Fig. 7E). Protopodite unarmed laterally. Exopod about 3.6 times as long as wide, extends well beyond endopod, which is 3.6 times as long as wide; with lateral border almost straight, entire, terminating in small mobile spine (Fig. 7D).

About 30 eggs of ca. 0.5 mm in length present under abdomen.

### **Male allotype**

First pleopod (Fig. 7F) with endopod almost half length of exopod, broadly lobate with two long plumose setae lateroproximally and five short simple setae medioproximally. Second pleopod (Fig. 7G) with endopod slightly shorter than exopod, with appendix masculina about as long as appendix interna, with two distal serrulate setae and two simple setae along lateral margin.

### **Measurements (mm)**

PoCL of ovigerous females 1.7–2.0; of non-ovigerous female 1.6; of males 0.9–1.7.

### **Colouration**

Adult females (Fig. 10D) with semi-translucent body covered by distinct transverse bands – two on carapace and one on each of 1<sup>st</sup> to 6<sup>th</sup> abdominal segment; first carapacial band running dorsally from base of rostrum obliquely to sides, forming wide “V-shaped” figure on anterior dorsum; first abdominal band diffused dorsally, but compact on sides, widening ventrally; 2<sup>nd</sup> segment with additional large spot anteriorly on sides; 6<sup>th</sup> abdominal segment transparent except for narrow brown band posteriorly; transparent interspaces of body irregularly speckled brown. Tail fan transparent but with widely-spaced dark punctuation, with irregular, partly diffused, anterior brown portion. Eyes and bases of antennae brown, distal antennular peduncle brown speckled. Pereiopods and antennal flagella semi-translucent, whitish.

### **Host**

Associated with soft corals of the family Nephtheidae (Octocorallia: Alcyonacea).

### **Distribution**

Known from northeastern and southwestern Sulawesi and Ambon in Indonesia and from Sabah, Malaysia.

### **Remarks**

There is some variation in morphological characters related with the size of the specimens examined. The smallest specimens have only 2 teeth on the dorsal side of the rostrum, whereas the largest specimens can have 6 teeth. The number of teeth along the distolateral margin of the first segment of the antennular peduncle also varies with size to some extent; the smallest specimen only has one tooth, while the larger ones can have 4 teeth. The number of fused segments of the upper antennular flagellum increases with size, up to about 5 segments. It was noted that in the larger males, the number of series of aesthetascs on the upper antennular flagellum was much higher than in juveniles and females, reaching about 11. Also the number of segments of the longer free ramus of the upper antennular flagellum was much larger, as is its length. The same holds for the lower antennular flagellum.

In the small specimens, the distal denticulate lamina with the blunt teeth medially on the cutting edge of the chela of the first pereopod is absent. Pleopods are longer in males than in females.

Most examined specimens of the type series are consistent in the presence of only one pair of the dorsal telson spines, while the distal pair, clearly present in most congeners, is missing in all specimens of *H. pseudaqabai* sp. nov. In the larger specimens the remaining pair of small spines is situated in the middle of the telson (Figs 6, 7D). In the smaller specimens of RMNH.CRUS.D.48243 this pair of spines is also missing and the telson is thus fully devoid of the dorsal spines.

### **Molecular analysis**

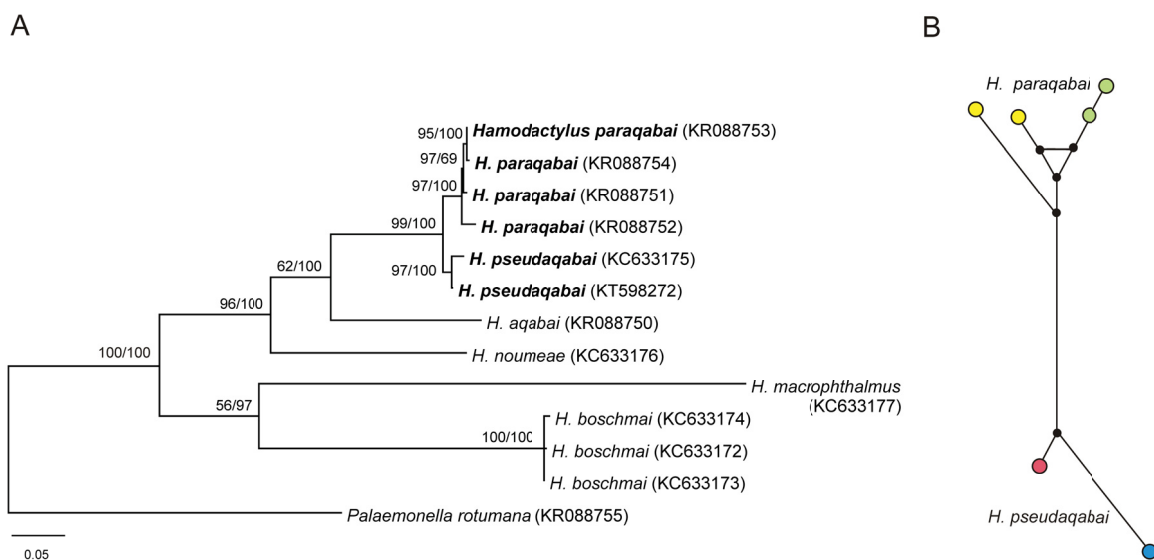
The obtained phylogenetic tree resolved by Maximum Likelihood based on COI sequence data (Fig. 11A) indicates, with high basal support of both the ML and BI methods, two genetic lineages among described species of the genus *Hamodactylus*. The first one is composed of *H. boschmai* together

with *H. macrophthalmus* (their mutual division is well supported basally by the BI method) and the second one contains all the remaining species. In the second clade, *H. noumeae* occupies the basal position, subsequently followed by *H. aqabai*. The latter species is a sister taxon to the terminal couple of new species, *H. paraqabai* sp. nov. and *H. pseudaraqabai* sp. nov. The genetic divergence of *H. aqabai* in relation to the pair of new species reaches 14–15%. While the genetic distance between those new species is comparatively low (3–4%), their subdivision is well supported basally.

The median-joining network (Fig. 11B) reveals two well separated groups of nodes for haplotypes respective to the two new species (colour circles) described in this paper, and hypothesised haplotypes (small black circles). The links connecting the nodes indicate the number of character differences. The shortest interspecific link from one species to another represents 15 mutation events for the COI gene. The intraspecific haplotype network covers 7 mutation events for two analysed *H. pseudaraqabai* sp. nov., but up to 11 mutations between 4 specimens of *H. paraqabai* sp. nov.; just one mutation is indicated for the Australian specimens of *H. paraqabai* sp. nov., but 10 mutations for their two conspecifics from Papua New Guinea (or 1–7, if the hypothesised haplotypes are included).

## Discussion

The genus *Hamodactylus* currently contains six species, including the two new ones described here. The genus is unique among symbiotic palaemonid shrimps in the strong reduction in size of the second pereopods, up to a small and slender appendage similar to an ambulatory leg, while those are generally well developed, larger and more robust, sometimes highly modified, in other symbiotic palaemonids. Other remarkable characters are more or less widely distributed among often unrelated genera. The



**Fig. 11.** Results of molecular analyses of *Hamodactylus* spp. **A.** Phylogenetic tree resolved by Maximum Likelihood based on COI sequence data with the HKY+I+G substitution model (bootstrap values are expressed as percentages in the order ML/BI; GenBank accession numbers are provided for all specimens; newly described species are in bold). **B.** Median-joining haplotype network showing phylogenetic relationships among haplotypes of the COI gene of two new species of *Hamodactylus* (yellow colour denotes haplotypes sampled in Madang Lagoon, Papua New Guinea; green in Lizard Island, Australia; blue in Sabah, Malaysia; red in Sulawesi, Indonesia); small black circles represent missing (hypothesised) haplotypes to connect existing sequences within the network with maximum parsimony.

dorsally dentate and highly arched rostrum, although not always as high as in *Hamodactylus*, is present in, e.g., *Propontonia pellucida* Bruce, 1969 and in some species of the genera *Periclimenes* Costa, 1844, *Phycomenes* Bruce, 2008 and *Zenopontonia* Bruce, 1975. The reduced molar process of the mandible is described, e.g., for the genera *Ctenopontonia* Bruce, 1979, *Fennera* Holthuis, 1951, *Leptomenaeus* Bruce, 2007, *Metapontonia* Bruce, 1967, *Nippontonia* Bruce & Bauer, 1997 and *Paratypton* Balss, 1914 (e.g., Bruce 1967, 1979, 1994, 2007, 2008; Ďuriš & Horká 2008). Moreover, the simple walking dactyli, usually biunguiculate or specialized in symbiotic shrimps, are frequently present (e.g., *Ancylomenes kuboii* Bruce, 2010, *Periclimenes lepidus* Bruce, 1978, *P. madreporae* Bruce, 1969, or species of the genera *Hamopontonia* Bruce, 1970a, *Platycaris* Holthuis, 1952 and *Rapipontonia* Marin, 2007) (e.g., Bruce 1969, 1970a, 1978, 2010; Marin 2007, 2009). Most peculiar are, however, the denticulate cutting edges on the subspatulate chelae of the first pereopods. Such structures are known, e.g., in *Periclimenoides odontodactylus* (Fujino & Miyake 1968), *Pontoniopsis comanthi* Borradaile, 1915, in some species of the genus *Periclimenaeus* Borradaile, 1915, and in all species of the genera *Exoclimenella* Bruce, 1995, *Leptomenaeus*, *Periclimenella* Bruce, 1995 and *Zenopontonia* (e.g., Borradaile 1915; Bruce 1975; Fujino & Miyake 1968; Ďuriš & Bruce 1995; Ďuriš *et al.* 2009). In some species of *Hamodactylus* (i.e., in *H. aqabai* and both new species) these denticulate laminae are situated on the lateral cutting edge of the fingers, bearing one or more teeth there as well. This combined character is unique among palaemonid shrimps.

Both new species differ from other congeners by the presence of a series of three or more obtuse teeth distally on the cutting edges on fingers of the first pereopod chela, at the region just under a thin and highly transparent denticulate lamina. A single tooth is present there in *H. aqabai* (see Bruce & Svoboda 1983), while the remaining three species have the first pereopod finger toothless, with the denticulate lamina extending along the whole length of the cutting edges (Bruce 1970b, 1982). In contrast, the lamina in the other species of *Hamodactylus* is short, occupying the distal third of the cutting edge.

Both new species may easily be distinguished from *H. boschmai* by the absence of a supraorbital tooth on the carapace, the presence of which in *H. boschmai* is unique among known *Hamodactylus* species. Similarly unique is *H. macrophthalmus* with its long eyes, far overreaching a very short rostrum (Fransen & Rauch 2013), while the other species have stout eyes distinctly failing to reach the end of the rostrum. *Hamodactylus noumeae* is the only species in the genus which possesses normally developed chelae on the reduced second pereopods, with equally grown fingers (Bruce 1970b); the chelae of *H. macrophthalmus* also have subequal fingers, but they are styliform, with long apical setae, (i.e., 'atyid-like', according to Fransen & Rauch 2013), and, thus, highly modified from normally developed chelae.

*Hamodactylus aqabai* differs from *H. paraqabai* sp. nov. by the longer denticulate lamina and a single tooth distally on the second pereopod fingers (see above), the multidenticulate distolateral angle of the basal antennular article consisting usually of 4 denticles and by the presence of only one pair of dorsal telson spines. *Hamodactylus pseudaqabai* sp. nov. shares the two latter characters of the antennule and the telson with *H. aqabai* (Bruce & Svoboda 1983).

Summarising the above comparisons, *H. paraqabai* sp. nov. is most similar to *H. pseudaqabai* sp. nov. The main morphological differences between these two species are as follows: (1) the fixed finger of the second pereopod is fully reduced, lacking, in *H. paraqabai* sp. nov. (vs the fixed finger reduced to a small but distinct stub in *H. pseudaqabai* sp. nov.); (2) the dactylus of the second pereopod is long and slender, about 5 times as long as high basally (vs more stout, about 3.5 times as long as high basally); (3) the basal segment of the antennular peduncle has the distolateral margin bidentate, with a small, pointed lobe more mesially (vs a multidentate distolateral margin with up to 4 teeth and a rounded lobe more mesially); (4) the telson bears 2 pairs of small dorsal telson spines (vs only the proximal pair being

present). In addition to these characters, the adult female of *H. paraqabai* sp. nov. has the posterior dorsum of the carapace slightly swollen, while a female of *H. pseudaqabai* sp. nov. is distinctly gibbous in that place. The first gonopod of the male of *H. paraqabai* sp. nov. has the endopod elongate, slightly enlarged distally, but the endopod in *H. pseudaqabai* sp. nov. is broadly ovoid distally.

Actually, the known species of *Hamodactylus* differ also geographically: *H. boschmai* and *H. noumeae* are widely distributed throughout the Indo-West Pacific area, while *H. aqabai* is the westernmost species, known only from the northern Red Sea; *H. macrophthalmus* and *H. pseudaqabai* sp. nov. occupy the central IWP region, being known from Indonesia and Malaysia; and *H. paraqabai* sp. nov. occurs in seas around Papua New Guinea and northeastern Australia.

Based on the present molecular analyses of known *Hamodactylus* species, both new species are closely related and have separated from a common ancestor quite recently, which, together with their geographical proximity, is confirmed by the synapomorphic state of the multidentate distal cutting edge on the fingers of the first pereopod. The distal denticulate lamina on those fingers is a character shared with their closest sister taxon from the Red Sea, *H. aqabai*. From the present pair of new species, *H. pseudaqabai* sp. nov. is more similar to *H. aqabai*, sharing with it the level of reduction of the second pereopod chela (to a small but distinct stub, vs full reduction in *H. paraqabai* sp. nov.) and the reduction of the dorsal telson spines to a single proximal pair.

*Hamodactylus noumeae*, as the basal member of the ‘*aqabai*’ lineage, possesses laterally compressed dactyli on the walking legs, and has the fingers of the first pereopod chelae bearing a long denticulate lamina occupying almost the whole length of the otherwise unarmed cutting edges. Those characters might be regarded as plesiomorphic, being shared with *H. boschmai*, a member of the second genetic lineage of *Hamodactylus*.

*Hamodactylus boschmai* and *H. macrophthalmus* are remarkably different from the quite uniformly built members of the above mentioned ‘*aqabai*’ clade. *Hamodactylus boschmai* possesses supraorbital teeth on the carapace, as well as strongly hooked dactyli overhanging the half-reduced fixed finger on the second pereopod chela. The latter leg is not noticeably reduced in size. This also confirms the basal position of this species in the actual two-member clade. *Hamodactylus macrophthalmus* shares with *H. boschmai* the elongate lamina on the first pereopod fingers; the pectination of *H. macrophthalmus* is, however, feebly developed (Fransen & Rauch 2013: fig. 4A). Based on a comparison of the COI sequences, the latter species is genetically most advanced resulting, among others, into the unique eye elongation and the strongly shortened rostrum, and by the modification of the second pereopods chelae into the ‘atyid-like’ shape as noted above. The level of size reduction of the second pereopod as well as the elongate, slender walking dactyli, are comparable with those of the ‘*aqabai*’ clade members (excluding *H. noumeae* with regards to the later character, see above). The size and shape reduction of the second pereopods is, however, most advanced in the three terminal members of the ‘*aqabai*’ clade, i.e., *H. aqabai*, *H. pseudaqabai* sp. nov., and *H. paraqabai* sp. nov. Both the new species are evidently derivatives of the most modern cleavage within the known species of the genus resulting in comparatively low molecular divergence on the low end of the commonly used 3–5% p-distance approach for delimiting species. Nevertheless, their morphological distinctions, particularly in the key morphological characters (below), are in good conformity with the basally well supported molecular divergence of these two species in the present molecular (BI) analysis.

The haplotype network analysis provides more details on the molecular divergence between the new species, confirming together with that their closer phylogenetic relationship, and into their intraspecific haplotype variability. While the COI sequences of the two Australian specimens analysed are almost identical, their conspecific specimens from Papua New Guinea show a wider molecular divergence.

The number of specimens analysed is, however, too low to provide a more adequate insight into the haplotype variability covered by those two species.

Thanks to the discovery of the two new species, the number of species in the genus *Hamodactylus* increased by 50%, now comprising six species. A key for their identification is proposed here.

**Key for the species identification of adult specimens of the genus *Hamodactylus* Holthuis, 1952**  
(modified from Fransen & Rauch 2013)

1. Carapace with supra-orbital tooth; dactylus of second pereopod strongly hooked (fixed finger short, up to half length of dactylus) ..... *H. boschmai* Holthuis, 1952  
– Carapace without supra-orbital tooth; dactylus of second pereopod feebly curved, not hooked ..... 2
2. Second pereopod with fixed finger of chela about as long as dactylus; first pereopod with denticulate lamina along almost whole cutting edge of dactylus ..... 3  
– Second pereopods non-chelate, with fixed finger reduced to small stub or completely lacking; first pereopod with denticulate lamina on distal 1/3 of dactylus ..... 4
3. Anteriorly extended eyes shorter than rostrum; eyestalk short, about as long as wide; basal segment of antennular peduncle with 2–3 teeth on distolateral margin ... *H. noumeae* Bruce, 1970b  
– Anteriorly extended eyes far overreaching rostrum; eyestalk long, about twice as long as wide; basal segment of antennular peduncle with one distolateral tooth.....  
..... *H. macrophthalmus* Fransen & Rauch, 2013
4. Fixed finger of second pereopod fully reduced, lacking; telson with 2 pairs of dorsal spines; basal segment of antennular peduncle with distolateral margin bidentate (cutting edges of first pereopod with 3–5 teeth on distal 1/3) ..... *H. paraqabai* sp. nov.  
– Fixed finger of second pereopod reduced to small but distinct stub; telson with 1 pair of dorsal spines; basal segment of antennular peduncle with multidentate distolateral margin (4 teeth, 1–2 in juveniles) ..... 5
5. Cutting edges of first pereopod fingers with 1 tooth on distal 1/3; ventral rostral margin convex ..... *H. aqabai* Bruce & Svoboda, 1983  
– Cutting edges of first pereopod fingers with 3–4 teeth on distal 1/3; ventral rostral margin straight ..... *H. pseudoaqabai* sp. nov.

**Acknowledgements**

The material was collected during the following expeditions: (1) CReefs Lizard Island Expedition 2010, a part of the CReefs Australia – a partnership between the Australian Institute of Marine Science, BHP Billiton, the Census of Marine Life, and the Great Barrier Reef Foundation project (principal investigators : J. Caley and S. Smith, AIMS, Townsville); (2) Madang, 2012, part of Our Planet Reviewed, Papua Niugini Expedition, organized jointly by the MNHN, Pro Natura International, the Institut de Recherche pour le Développement, and the University of Papua New Guinea (principal investigators: P. Bouchet, S. Samadi, and C. Payri); funded by the Total Foundation, Prince Albert II of Monaco Foundation, Foundation EDF, Stavros Niarchos Foundation, and Entrepouse Contracting; supported by the Divine Word University, permit delivered by the Papua New Guinea Department of Environment and Conservation; (3) Rumphius Biohistorical Expedition to Ambon, Indonesia, 1990, organized jointly by the Nationaal Natuurhistorisch Museum Leiden (NNM) (presently Naturalis Biodiversity Center), Lembaga Ilmu Pengetahuan Indonesia (LIPI), Pattimura University Ambon (principal investigator: H.L Strack); (4) Sulawesi Expedition, 1994, organized jointly by the NNM and LIPI (principal investigator J. van der Land); (5) Maluku Expedition to Ambon and Seram, 1996, organized jointly by the NNM and

LIPI (principal investigator: J. van der Land); (6) Semporna Marine Ecological Expedition to Semporna, Malaysia, 2010, was organized jointly by WWF-Malaysia, Universiti Malaysia Sabah's Borneo Marine Research Institute, Netherlands Centre for Biodiversity Naturalis (Presently Naturalis Biodiversity Center) and Universiti Malaya's Institute of Biological Sciences; research permission was granted by Economic Planning Unit, Prime Minister's Department, Economic Planning Unit Sabah, Sabah Parks and Department of Fisheries Sabah (principal investigators: B.W. Hoeksema and Z. Waheed); (7) Marine Biodiversity Workshop Lembeh Strait, 2012, jointly organized by the Universitas Sam Ratulangi (UNSRAT in Manado), the Bitung field station of the Research Centre of Oceanography (PPO-LIPI), and Naturalis Biodiversity Center (principal investigators: M.T. Lasut, B.W. Hoeksema and Y. Tuti).

The authors are grateful to Dr. L.P. van Ofwegen (Naturalis Biodiversity Center, Leiden) for identification of alcyonacean corals, and to two anonymous reviewers for valuable comments and proposals to the manuscript. This work was supported by the project CZ.1.05/2.1.00/03.0100 (IET), financed by the Structural Funds of the European Union, and by project LO1208 of the National Feasibility Programme-I of the Czech Republic (Z.Ď.).

## References

- Bandelt H.J., Forster P. & Röhl A. 1999. Median-joining networks for inferring intraspecific phylogenies. *Molecular Biology and Evolution* 16(1): 37–48.
- Borradaile L.A. 1915. Notes on Carides. *The Annals and Magazine of Natural History, series 8*: 205–213. <http://www.biodiversitylibrary.org/item/53307#page/225/>
- Bruce A.J. 1967. Notes on some Indo-Pacific Pontoniinae, III–IX. Descriptions of some new genera and species from the Western Indian Ocean and the South China Sea. *Zoologische Verhandelingen* 87: 1–73.
- Bruce A.J. 1969. Preliminary descriptions of sixteen new species of the genus *Periclimenes* Costa, 1844 (Crustacea, Decapoda Natantia, Pontoniinae). *Zoologische Mededelingen* 43: 253–278.
- Bruce A.J. 1970a. Notes on some Indo-Pacific Pontoniinae. XV. *Hamopontonia corallicola* gen. nov., sp. nov., a new pontoniid shrimp from Hong Kong. *Crustaceana* 18: 37–48. <http://dx.doi.org/10.1163/156854070X00040>
- Bruce A.J. 1970b. Report on some commensal pontoniid shrimps (Crustacea: Palaemonidae) associated with an Indo-Pacific gorgonian host (Coelenterata: Gorgonacea). *Journal of Zoology* 160: 537–544. <http://dx.doi.org/10.1111/j.1469-7998.1970.tb03096.x>
- Bruce A.J. 1975. Notes on some Indo-Pacific Pontoniinae, XXV. Further observations upon *Periclimenes noverca* Kemp, 1922, with the designation of a new genus *Zenopontonia*, and some remarks upon *Periclimenes parasiticus* Borradaile (Decapoda Natantia, Palaemonidae). *Crustaceana* 28: 275–285. <http://dx.doi.org/10.1163/156854075X00531>
- Bruce A.J. 1978. A report on a collection of pontoniine shrimps from Madagascar and adjacent seas. *Zoological Journal of the Linnean Society* 62: 205–290. <http://dx.doi.org/10.1111/j.1096-3642.1978.tb01039.x>
- Bruce A.J. 1979. *Ctenopontonia cyphastreophila*, a new genus and species of coral associated pontoniine shrimp from Eniwetok Atoll. *Bulletin of Marine Science* 29(3): 423–435.
- Bruce A.J. 1981. Pontoniine shrimps of Heron Island. *Atoll Research Bulletin* 245: 1–33.
- Bruce A.J. 1982. The pontoniine shrimp fauna of Hong Kong. In: Morton B.S. & Tseng C.K. (eds) *The Marine Flora and Fauna of Hong Kong and Southern China. Proceedings of the First International Marine Biological Workshop*: 233–284. Hong Kong University Press, Hong Kong.
- Bruce A.J. 1983. The pontoniine shrimp fauna of Australia. *Australian Museum Memoir* 18: 195–218.



- Bruce A.J. 1994. *A Synopsis of the Indo-West Pacific Genera of the Pontoniinae (Crustacea: Decapoda: Palaemonidae)*. Theses Zoologicae 25, Koeltz Scientific Books, Königstein.
- Bruce A.J. 2007. *Leptomenaeus* gen. nov., a new name for *Leptomenes* Bruce, 2006 (Crustacea: Decapoda: Pontoniinae). *Cahiers de Biologie Marine* 48: 411–412.
- Bruce A.J. 2008. *Phycomenes zostericola* gen. nov., sp. nov., a new pontoniine shrimp (Crustacea: Decapoda: Palaemonidae) from Moreton Bay, Queensland. In: Davie P.J.F. & Phillips J.A. (eds) *The Marine Fauna and Flora of Moreton Bay, Queensland. Proceedings of the Thirteenth International Marine Biological Workshop, Memoirs of the Queensland Museum - Nature* 54(1): 219–232. Brisbane.
- Bruce A.J. 2010. *Ancylomenes kuboii* and *A. okunoii* spp. nov. (Decapoda: Pontoniinae), from the Australian Northwest Shelf, Vietnam and the Philippines. *Zootaxa* 2372: 169–176.
- Bruce A.J. & Svoboda A. 1983. Observations upon some pontoniine shrimps from Aqaba, Jordan. *Zoologische Verhandelingen* 205: 1–44.
- Chace F.A. Jr. & Bruce A.J. 1993. The caridean shrimps (Crustacea: Decapoda) of the *Albatross* Philippine Expedition, 1907–1910, Part 6: Superfamily Palaemonoidea. *Smithsonian Contributions to Zoology* 543: 1–151. <http://dx.doi.org/10.5479/si.00810282.543>
- Darriba D., Taboada G.L., Doallo R. & Posada D. 2012. jModelTest 2: more models, new heuristics and parallel computing. *Nature Methods* 9 (8): 772. <http://dx.doi.org/10.1038/nmeth.2109>
- Đuriš Z. & Bruce A.J. 1995. A revision of the ‘petitthouarsii’ species-group of the genus *Periclimenes* Costa, 1844 (Crustacea: Decapoda: Palaemonidae). *Journal of Natural History* 29(3): 619–671. <http://dx.doi.org/10.1080/00222939500770221>
- Đuriš Z. & Horká I. 2008. A new shrimp species of the genus *Leptomenaeus* Bruce, 2007 (Crustacea: Decapoda: Pontoniinae) from Vietnam. *Zootaxa* 1872: 45–58.
- Đuriš Z., Horká I. & Sandford F. 2009. *Periclimenaeus pectinidactylus* n. sp. (Crustacea: Decapoda: Pontoniinae) from the Belizean Barrier Reef, Caribbean Sea. *Zootaxa* 2130: 31–40.
- Edgar R.C. 2004. MUSCLE: multiple sequence alignment with high accuracy and high throughput. *Nucleic Acids Research* 32: 1792–1797. <http://dx.doi.org/10.1093/nar/gkh340>
- Folmer O., Black M., Hoeh W., Lutz R. & Vrijenhoek R. 1994. DNA primers for amplification of mitochondrial cytochrome *c* oxidase subunit I from diverse metazoan invertebrates. *Molecular Marine Biology and Biotechnology* 3(5): 294–299.
- Fransen C.H.J.M. 2012. Palaemonid Shrimps. In: Kassem K., Hoeksema B. & Affendi Y.A. (eds) *Semporna Marine Ecological Expedition*: 101–108. WWF-Malaysia, NCB Naturalis; Universiti Malaysia Sabah. Kota Kinabalu, Malaysia.
- Fransen C.H.J.M. & Rauch C. 2013. *Hamodactylus macrophthalmus* spec. nov., a new coral-associated pontoniine shrimp (Decapoda, Caridea, Palaemonidae) from Indonesia. *Zootaxa* 3635(3): 286–296. <http://dx.doi.org/10.11646/zootaxa.3635.3.8>
- Fujino T. & Miyake S. 1968. Description of two new species of pontoniid shrimps (Crustacea, Decapoda, Palaemonidae) commensal with sponges. *Ohmu. Occasional papers of the Zoological Laboratory, Faculty of Agriculture, Kyushu University* 1: 85–96.
- Marin I. 2007. Pontoniine shrimps (Decapoda: Caridea: Palaemonidae) inhabiting boring sponges (Porifera: Demospongia) from Nhatrang Bay, Vietnam, with descriptions of three new species. *Zoologische Mededelingen* 81: 217–240.
- Marin I. 2009. A review of the pontoniine shrimp genus *Rapipontonia* Marin, 2007 (Decapoda: Caridea: Palaemonidae), with the description of a new species from the Indo-West Pacific. *Zootaxa* 2289: 1–17.

Miller M.A., Pfeiffer W. & Schwartz T. 2010. Creating the CIPRES Science Gateway for inference of large phylogenetic trees. *In: Proceedings of the Gateway Computing Environments Workshop (GCE)*, 14 Nov. 2010, New Orleans, LA: 1–8.

Ronquist F., Teslenko M., van der Mark P., Ayres D.L., Darling A., Höhna S., Larget B., Liu L., Suchard M.A. & Huelsenbeck J.P. 2012. MrBayes 3.2: efficient Bayesian phylogenetic inference and model choice across a large model space. *Systematic Biology* 61: 539–542. <http://dx.doi.org/10.1093/sysbio/sys029>

Tamura K., Stecher G., Peterson D., FilipSKI A. & Kumar S. 2013. MEGA6: Molecular Evolutionary Genetics Analysis version 6.0. *Molecular Biology and Evolution* 30(12): 2725–2729. <http://dx.doi.org/10.1093/molbev/mst197>

*Manuscript received: 7 September 2015*

*Manuscript accepted: 2 December 2015*

*Published on: 6 April 2016*

*Topic editor: Rudy Jocqué*

*Desk editor: Kristiaan Hoedemakers*

Printed versions of all papers are also deposited in the libraries of the institutes that are members of the *EJT* consortium: Muséum national d’Histoire naturelle, Paris, France; Botanic Garden Meise, Belgium; Royal Museum for Central Africa, Tervuren, Belgium; Natural History Museum, London, United Kingdom; Royal Belgian Institute of Natural Sciences, Brussels, Belgium; Natural History Museum of Denmark, Copenhagen, Denmark.