

Received: 27 August 2025 • Accepted: 22 January 2026 • Published: 13 April 2026

Topic editor: Tony Robillard • Section editor: Torbjørn Ekrem • Desk editor: Radka Rosenbaumová

### Research article

urn:lsid:zoobank.org:pub:82487E0D-5E1C-464F-A465-892304A5086B

## Updating and expanding the key to European *Megaselia* (Diptera, Phoridae): from Disney's Britain to a continental fauna, with 393 additions and four new species

Valerio CARUSO<sup>1,\*</sup>  , Ronald Henry DISNEY<sup>2</sup>  , Daniel WHITMORE<sup>3</sup>  ,  
Esben BØGGILD<sup>4</sup>  , Bernd GRUNDMANN<sup>5</sup>   & Emily HARTOP<sup>6,\*</sup>  

<sup>1,3</sup>Staatliches Museum für Naturkunde Stuttgart, Rosenstein Gewann 1, 70191 Stuttgart, Germany.

<sup>2</sup>Department of Zoology, University of Cambridge, Downing St., Cambridge, CB2 3EJ, UK.

<sup>4</sup>Fayesgade 10, DK-9500, Hobro, Denmark.

<sup>5</sup>Diekstraße 6, D-33824 Werther, Germany.

<sup>6</sup>Department of Natural History, NTNU University Museum, Norwegian University of Science and Technology, Trondheim, NO-7012, Norway.

\*Corresponding authors: valerio.caruso90@gmail.com; emily.hartop@ntnu.no

<sup>2</sup>Email: rhld2@cam.ac.uk

<sup>3</sup>Email: daniel.whitmore@smns-bw.de

<sup>4</sup>Email: esbenboggild@gmail.com

<sup>5</sup>Email: bernd.grundmann@hotmail.com

**Abstract.** We present a comprehensive list of additions to Disney's 1989 key 'Scuttle Flies. Diptera: Phoridae. Genus *Megaselia*', which has become the de facto fundamental reference for the identification of European species of *Megaselia*. The present update extends Disney's key to cover all Palearctic species, with 393 additions and an indication of where they fit in the key. The couplets in Disney (1989) where these species key are indicated. We also report the discovery of two specimens of *M. romphaea* (Schmitz, 1947) and provide an updated description of this species, as the original account is outdated and difficult to consult. In addition, we describe four new species of *Megaselia* from Germany – *M. bruna* Caruso, Bøggild & Grundmann sp. nov., *M. curta* Caruso, Bøggild & Grundmann sp. nov., *M. robertoi* Caruso sp. nov., and *M. splendida* Caruso, Bøggild & Grundmann sp. nov. – using the streamlined method of description developed specifically for the genus.

**Keywords.** Barcoding, integrative taxonomy, morphology, species description.

Caruso V., Disney R.H., Whitmore D., Bøggild E., Grundmann B. & Hartop E. 2026. Updating and expanding the key to European *Megaselia* (Diptera, Phoridae): from Disney's Britain to a continental fauna, with 393 additions and four new species. *European Journal of Taxonomy* 1048: 245–264. https://doi.org/10.5852/ejt.2026.1048.3253

## Introduction

Phoridae Newman, 1835 are a hyperdiverse family of Diptera Linnaeus, 1758 with more than 4500 species across ~280 genera worldwide (Brown 2022b). However, over 90% of their global diversity remains undescribed, with some estimates reaching the hundreds of thousands of species (Srivathsan *et al.* 2019). The family includes parasitoids, parasites, scavengers, predators, fungivores, and herbivores, and plays key roles in decomposition, nutrient cycling, and pollination (Disney 1994; Marshall 2012). Many species are parasitoids, targeting diverse arthropods – including insects, arachnids, myriapods – and even mollusks (Disney 1994; Marshall 2012). Germany is one of the better studied regions, with 400 recorded species (Schmitz 1981; Pape *et al.* 2015; Morinière *et al.* 2019; Schumann *et al.* 1999). Over the past two centuries, numerous studies have led to the current knowledge of this fly family. Nevertheless, despite sustained research efforts, the family remains remarkably poorly understood, with its true species diversity largely unknown (Srivathsan *et al.* 2019; Hartop *et al.* 2020; Li *et al.* 2025). In recent years, the identification process for hyperdiverse groups has been pushed forward by technological innovations in the field of molecular sequencing (Meier *et al.* 2016; Srivathsan 2019, 2021, 2024; Yeo *et al.* 2020) and integrative taxonomy (Hartop *et al.* 2022). The genus *Megaselia* Rondani, 1856 is nested within the subfamily Metopininae Peterson, 1887, one of the two main branches of the family (Hartop *et al.* 2020; Li *et al.* 2025); this genus alone contains 1700 described species (Brown 2022a), 247 of which are recorded for Germany (Schumann *et al.* 1999; German Barcode of Life Consortium 2020) and has a projected global diversity nearing 50 000 species (Disney 1989, 1994; Srivathsan *et al.* 2019; Hartop *et al.* 2020). A recent phylogenetic analysis based on the most comprehensive molecular dataset for *Megaselia* to date (Hartop *et al.* 2020) confirmed that the genus, as traditionally defined, is not fully monophyletic, although most species form a well-supported ‘core clade’ that represents the bulk of the diversity of the genus. However, deeper relationships among these remain unresolved, underscoring persistent challenges in reconstructing its phylogeny.

During investigations of the diversity of *Megaselia*, researchers are invariably confronted with the overwhelming number of species and the challenges of species identification, which relies primarily on morphological characters of the male genitalia. An additional difficulty lies in the vast and scattered taxonomic literature, much of which is dated, not in English (e.g., Schmitz 1947, 1951, 1981), and often difficult to access. A solution that facilitates access to species descriptions and improves the usability of this literature could prove to be a crucial tool for taxonomic research and species identification.

We here release a comprehensive list of additions to Disney’s (1989) British key to the genus *Megaselia*, published as ‘Scuttle Flies. Diptera: Phoridae. Genus *Megaselia*’, which originally included 221 species. We here add 393 species, expanding the key to encompass all currently described Palearctic species, along with two upcoming additions, one in press (Disney in press) and one currently under description. Palearctic species of the Arabian fauna are also included, for which a separate key is already available in Disney (2006a, 2009a). We also describe four species new to science, found in Germany following a LIT (large-scale integrative taxonomy) (Hartop *et al.* 2022) analysis of over 9000 specimens of *Megaselia*.

This work is part of ‘An integrative framework for dark taxa biodiversity assessment at scale: a case study using *Megaselia* (Diptera, Phoridae)’ by Caruso *et al.* (2024), and part of the large census project on hidden biodiversity of the so-called ‘dark taxa’, as part of the German Barcode of Life III (GBOL III) initiative (Hausmann *et al.* 2020).

## Material and methods

### Additions to the British key of *Megaselia* (Supp. file 1)

Additions to Disney’s (1989) key were compiled through a comprehensive review of all available material on the listed species, including examination of primary types, original descriptions, redescrptions, and

existing keys. For years, many of these additions existed only as a filecard system in author HD's lab. They were later digitised by author EH and expanded by author VC for the phorid research community, and are now published here for the first time to make them broadly accessible. Column A states the number of the couplet where each species keys out (sometimes species have multiple listings if they key out in more than one place). Column B gives the species epithet, column C the country from which the species was described, and columns D–F give details of the original description (author, date, and citation).

The identification key to *Megaselia* of the British Isles is used as the foundation because it remains the most comprehensive and up-to-date resource for many European species of the genus, and is particularly valuable for its wealth of reference images. Although not originally designed to cover the full Palearctic fauna, its widespread use has established it as a reliable and widely accepted tool, especially for identifying major working species groups. When consulting Disney's key, users can now refer to the additions reported here after arriving at a couplet, allowing them to explore original descriptions of morphologically similar species and navigate more confidently through the expanding European diversity of *Megaselia*. When species already included in Disney's (1989) key appear in the updated list with different couplet numbers, it is important to clarify how these revisions should be interpreted. For all affected species, we provide notes in Supp. file 1 (column G) indicating their former couplet in Disney's (1989) key and explicitly stating when the earlier placement is no longer valid (rekey) or when the species is additionally keyed to other couplets. For these species, the diagnostic characters underlying the new placement are also reported in the notes in Supp. file 1.

All the additions are listed and provided in the Supp. file 1, which is also available in the Zenodo repository: <https://doi.org/10.5281/zenodo.16963238>.

### **New species description**

Samples were collected in Germany, mainly in the southern regions, with standardized Malaise traps, and more than 9000 specimens were sequenced for the barcode region of the *COI* mitochondrial gene (for full details see Caruso *et al.* 2024). Following the protocol presented by Hartop *et al.* (2022), 277 putative molecular species clusters were defined using the 'Objective Clustering' species delimitation algorithm (part of TaxonDNA in Meier *et al.* 2006). 3% minimum interspecific *p*-distance clusters were evaluated using a stability index and the intracluster maximum pairwise distance as predictors for incongruences between barcode clusters and morphology (Hartop *et al.* 2022). These putative species were morphologically examined using identification keys (Borgmeier 1964, 1966; Disney 1988, 1989, 1994, 1999, 2006b, 2009b, 2014; Disney & Aguiar 2008; Disney & Bøggild 2021; Mostovski 2016; Schmitz 1927, 1936, 1981) and descriptions (see Supp. file 1), and six new species were identified. Two of them are treated separately, of which *M. heimingshofensis* Caruso, Grundmann & Bøggild, 2025 has already been published, and another species belonging to the *pulicaria* complex is in the process of being described and will be treated separately, in a revision of the complex. The remaining four are described here following the streamlined, table-based description method for *Megaselia* species developed by Hartop & Brown (2014a). Furthermore, the morphological terminology used by Hartop & Brown (2014a, 2015) is applied, replacing some of the terms present in Disney's keys (Disney 1983, 1989, 1994), as follows: "anepisternum" instead of "mesopleuron", "terminalia" instead of "hypopygium" and "hypoproct" instead of "proctiger".

The detailed methods and results of the study that led to these descriptions are reported in Caruso *et al.* (2024). The sequences of all barcoded specimens (Caruso *et al.* 2024) (including all the specimens described here) are openly available to consult in BOLD at <https://doi.org/10.5883/DS-SPHD2401>, and in GenBank under accession numbers OR924472 to OR933558. We note that although molecular diagnostic methods exist (reviewed by Brower & DeSalle 2024), the limited sampling and largely undescribed nature of this taxon make short-barcode diagnoses premature; full barcode sequences are provided for future, data-informed use.

**Table 1.** Species core information. Columns: 1 = Name of the species; 2 = “Habitus” refers to the photos and drawings of each specimen presented in this work; 3 = “Key” refers to the couplet into which the new species are inserted within Disney’s (1989) key.

| Name                               | Habitus         | Key         |
|------------------------------------|-----------------|-------------|
| <i>M. bruna</i> sp. nov.           | Fig. 3; Table 2 | 59 and 120  |
| <i>M. curta</i> sp. nov.           | Fig. 4; Table 3 | 86          |
| <i>M. robertoi</i> sp. nov.        | Fig. 5; Table 4 | 203         |
| <i>M. splendida</i> sp. nov.       | Fig. 6; Table 5 | 199 and 232 |
| <i>M. romphaea</i> (Schmitz, 1947) | Fig. 7; Table 6 | 1           |

The four new species are added to the key in ‘Scuttle Flies. Diptera: Phoridae. Genus *Megaselia*’ by Disney (1989), taking into consideration all the additions made in the years following the release of the key (Supp. file 1). The additions regarding the species described here are listed in Table 1.

Specimens were examined using a Leica M205C stereo microscope and photographed using a Sony  $\alpha$  7R II camera equipped with a Mitutoyo M Plan Apo 10 $\times$  objective before slide mounting. Photograph stacking was done with Helicon Focus software (ver. 8.2.2; Helicon Soft Ltd. 2024). Drawings were made on paper based on photographs of slide-mounted terminalia taken with Keyence VHX-5000 photomicroscope and using a camera lucida (drawing tube). All images were edited with GIMP (ver. 2.10.38; The GIMP Development Team 2024). All body and wing measurements were taken with the Keyence measuring instrument after sectioning and before slide-mount preparation. In cases where a structure was broken into two pieces, both fragments were measured to obtain the total length.

### Deposition of specimens

The specimens were preserved in 99.6% pure ethanol at -20°C from the moment of sorting to preparation. Holotypes were slide-mounted using Euparal, while paratypes are all preserved in 99.6% pure ethanol at -20°C. All type specimens are deposited in the Staatliches Museum für Naturkunde Stuttgart (SMNS) collection. Each specimen was assigned with an alphanumeric code (SMNS\_DIP#) related to the SMNS collection, and another code (SMNS\_#) related to the BOLD repository. These codes and the COI sequences of all the specimens are provided in Supp. file 2.

### Repository acronyms

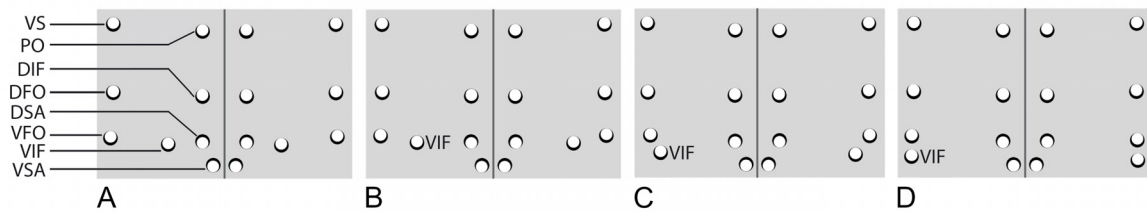
SMNS = Staatliches Museum für Naturkunde Stuttgart

ZFMK = Zoological Research Museum Alexander Koenig (Zoologisches Forschungsmuseum Alexander Koenig)

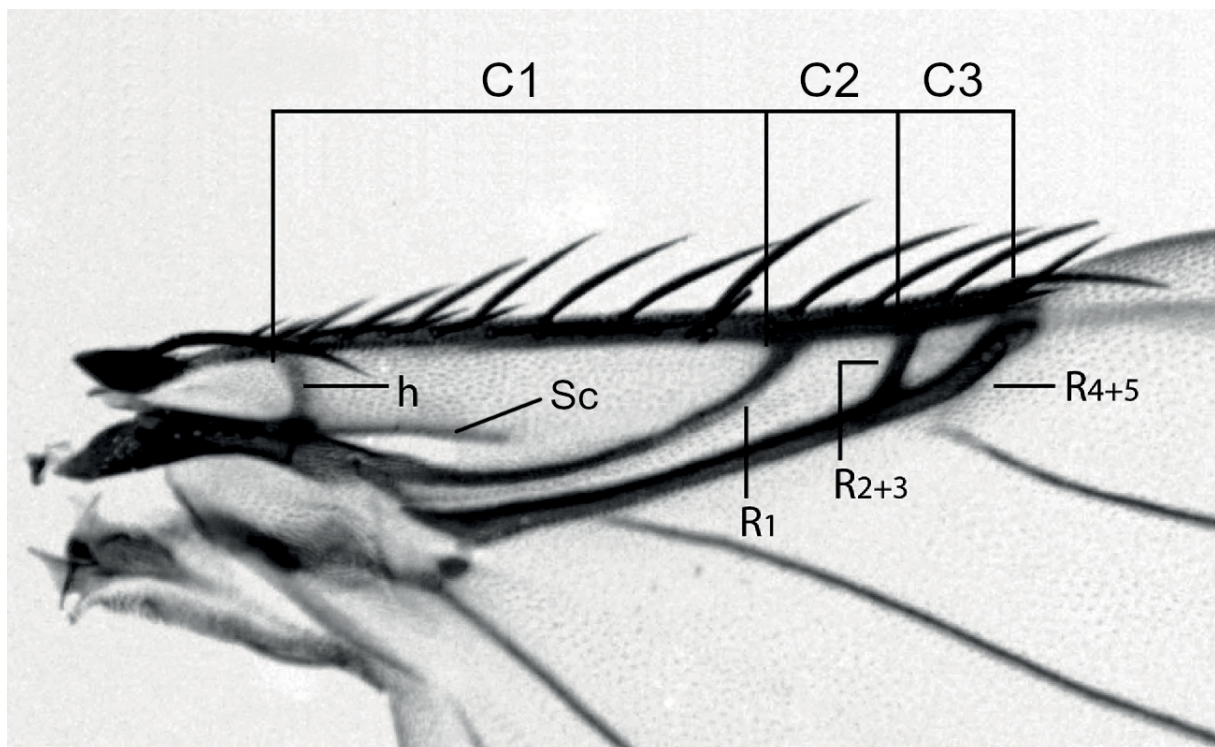
### Standardised morphological characters (following Hartop & Brown 2014a, 2014b; Hartop *et al.* 2015)

- Supra-antennal (SA) setae ratio: the length of ventral SA (VSA) in percentage of the dorsal SA (DSA) length, where the same length is coded ‘1.00’.
- Positioning of ventral interfrontal (VIF) setae: coded as A, B, C or D, following the scheme in Fig. 1.
- Notopleural seta (NP): Number of notopleural setae and information about length and position. Also present in the wording ‘NP cleft’, where it indicates the presence or absence of a suture at the position of the first notopleural seta (in case of presence of NP cleft, therefore, only 2 NP setae are present).
- Halter color compared to the scutum (thorax): lighter, same, darker.
- Leg abbreviations: Tarsal segment (Ts), femur (F), tibia (T), antero-dorsal setae (AD), postero-dorsal setae (PD).
- Foretarsus (ts1) palisade: the numbers of foretarsal segments with setal palisades.
- Midtibial (t2) palisade: the portion of the tibia length with a setal palisade, starting from the basal part.

- Hind femoral (f3) basal setae terminology: B = basal, AV = antero-ventral.
- Costal index (CI): costal vein length in relation to the whole wing length.
- Costal ratios in decimals: as ‘C1:C2:C3’ with C3 at a value of 1. See Fig. 2.
- The ratio between the lengths of anal tube (AT) and the dorsal face of the epandrium (E). The length of the AT (cerci + hypoproct) is given relative to the dorsal face of the E as ‘AT<E’, ‘AT=E’, ‘AT>E’.
- The ratio between the lengths of terminalia’s setae is represented by the three operators’ symbols ‘</=>’. The bristles that we compare are respectively those present on the various parts of the terminalia: tergite 6 (T6), epandrium (E), cerci (C) and hypoproct (H).
- The specimen length is measured from edge of frons to tip of hypoproct.



**Fig. 1.** Frontal setation pattern (from Hartop & Brown 2014a). VS = vertical seta; PO = postocellar seta; DIF = dorsal interfrontal seta; DFO = dorsal fronto-orbital seta; DSA = dorsal supra-antennal seta; VFO = ventral fronto-orbital seta; VIF = ventral interfrontal seta; VSA = ventral supra-antennal seta.



**Fig. 2.** Photograph of a *Megaselia* species right wing showing our measuring conventions. Here, proportions of C1:C2:C3 are 4.5:1.2:1. Abbreviations: h = humeral crossvein; R1 = radial vein 1; R2+3 = radial veins 2+3; R4+5 = radial veins 4+5; Sc = Subcosta (from Hartop & Brown 2014b after Schmitz 1951: textfig. 44).

## Results

### Additions

Through a systematic review of the Palearctic literature on *Megaselia*, we compiled 393 additions to Disney's (1989) key, effectively expanding its scope from the British fauna to the broader continental scale. The updated list (Supp. file 1) integrates all Palearctic species described to date and serves as an essential resource for navigating the growing diversity of the genus. Each entry is linked to each species' respective position in the key.

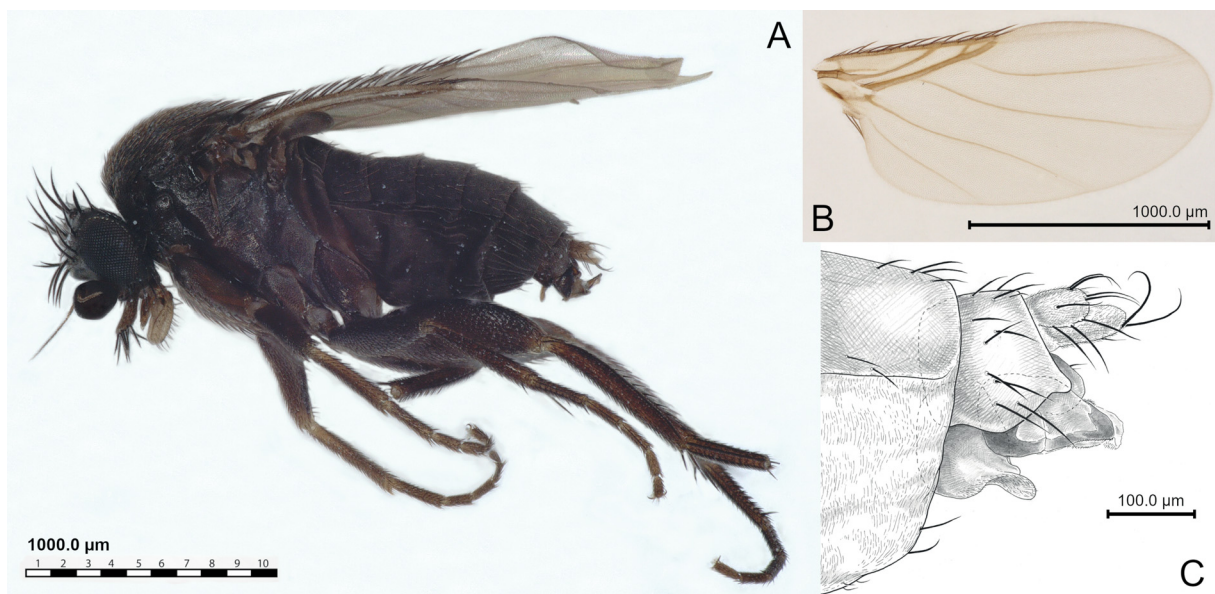
### Descriptions of new species

Class Insecta Linnaeus, 1758  
Order Diptera Linnaeus, 1758  
Family Phoridae Newman, 1835  
Subfamily Metopininae Peterson, 1887  
Genus *Megaselia* Rondani, 1856

*Megaselia bruna* Caruso, Bøggild & Grundmann sp. nov.  
urn:lsid:zoobank.org:act:674BC6E0-D427-478F-BAD9-70CEB06EC98C  
Fig. 3; Table 2

### Diagnosis

Uniform dark brown body. Frontal setae as long as the height of the frons. Anepisternum with 15 robust setae, each approximately equal in length to the setae of the ocular row. Haltere as dark as the body. Differs from *M. fuscipalpis* Lundbeck, 1919 in the costal ratio (costal section 1 clearly longer than section 2), and the shape and ratios of the epandrium: dorsal length of epandrium as long as anal tube (1.5 times in *M. fuscipalpis*) with a notch under the distal, pointed lobe. Differs from *M. vestita* (Wood, 1914) in the absence of a stronger seta on the left side of the epandrium. Epandrium with many robust hairs only. Left side of epandrium with a small pointed end below the anal tube, and a small notch on the distal inferior



**Fig. 3.** *Megaselia bruna* Caruso, Bøggild & Grundmann sp. nov., holotype ♂ (SMNS\_DIP\_019269). A. Habitus. B. Wing. C. Terminalia. Specimen length 2.268 mm. Wing length 1.839 mm. Costal setae length 0.091 mm.

**Table 2.** *Megaselia bruna* Caruso, Bøggild & Grundmann sp. nov. Description (following Hartop & Brown 2014a).

| <b>Head</b>                    |  |
|--------------------------------|--|
| SA ratio                       | 1.0  |
| VIF position                   | normal 'B'                                     |
| Palpal setae length            | long   |
| Labellum spinosity             | spinose sparse                                 |
| <b>Thorax</b>                  |  |
| Anepisternum                   | hairs (~15)                                    |
| Relative halter color          | same (slightly lighter)                        |
| Number NP setae                | 3  |
| NP cleft                       | absent   |
| Scutellar setae                | 2+2  |
| <b>Legs</b>                    |  |
| Ts1 palisade                   | 1–5  |
| T2 palisade                    | 0.70   |
| T3 comb bifurcate              | absent   |
| T3 setulae                     | PD only  |
| F3 basal setae                 | B<AV   |
| F3 basal setae differentiation | present (short and slightly hooked at the tip) |
| <b>Wing</b>                    |  |
| Wing length                    | 1.839 mm                                       |
| Subcosta                       | incomplete                                     |
| Hair at base of R              | short  |
| R2+3                           | present  |
| Costal index                   | 0.50/0.55                                      |
| Costal ratios                  | 4.2:1.3:1                                      |
| Costal setae length            | 0.09 mm  |
| Number alular setae            | 4+ (7/8)                                       |
| Wing color                     | lightly infuscated                             |
| <b>Genitalia</b>               |  |
| AT length                      | E≥AT   |
| E setation                     | hairs only                                     |
| Relative posterior setation    | T6=C<H>E                                       |

margin. Right side of epandrium extended downwards and with a lobe below the anal tube, forming a '>' -shaped notch (facing the back of the terminalia) and a large C-shaped concavity (facing the front of the terminalia). Relative posterior setation T6=C<H>E. Hypoproct hairs slightly longer than hairs on the cerci and longer than all other terminalia hairs. Left hypandrial lobe with hairs, right hypandrial lobe absent. Couplets in Disney (1989): 59 and 120 (see Additions to the British key of *Megaselia* (Supp. file 1)).

### Etymology

Named after its dark brown body: '*bruna*' (adjective, feminine) means 'dark brown' in Latin.

### Type material

#### Holotype

GERMANY • ♂; Nordrhein-Westfalen, Lkr. Düsseldorf, Nationalpark Eifel; 50.572° N, 6.416° E; 496 m a.s.l.; 18 May–1 Jun. 2009; J. Esser leg.; BOLD no: SMNS\_1203416 (COI); SMNS, SMNS\_DIP\_019269.

### Paratype

GERMANY • 1 ♂; Baden-Württemberg, Lkr. Rems-Murr, Backnang, Katharinenplaisir; 48.955° N, 9.440° E; 289 m a.s.l.; 4 Sep.2014; A. Rosenbauer leg.; BOLD no: SMNS\_1198953 (COI); SMNS, SMNS\_DIP\_015196.

### Description

HEAD. SA ratio 1.0. VIF position normal 'B'. Palpal setae long. Labellum spinose sparse.

THORAX. Anepisternum with ~15 hairs. Halter same color, slightly lighter. NP setae 3. NP cleft absent. Scutellar setae 2+2.

LEGS. Ts1 palisade 1–5. T2 palisade 0.70. T3 comb bifurcate absent. T3 setulae PD only. F3 basal setae B<AV. F3 basal setae differentiated, short, hooked tip.

WING. Length 1.839 mm. Subcosta incomplete. Base of R with short hair. R2+3 present. Costal index 0.50/0.55. Costal ratios 4.2:1.3:1. Costal setae 0.09 mm. Alular setae 4+ (7/8). Wing lightly infuscated.

GENITALIA. AT length  $E \geq AT$ . E setation hairs only. Posterior setation  $T6=C < H > E$ .

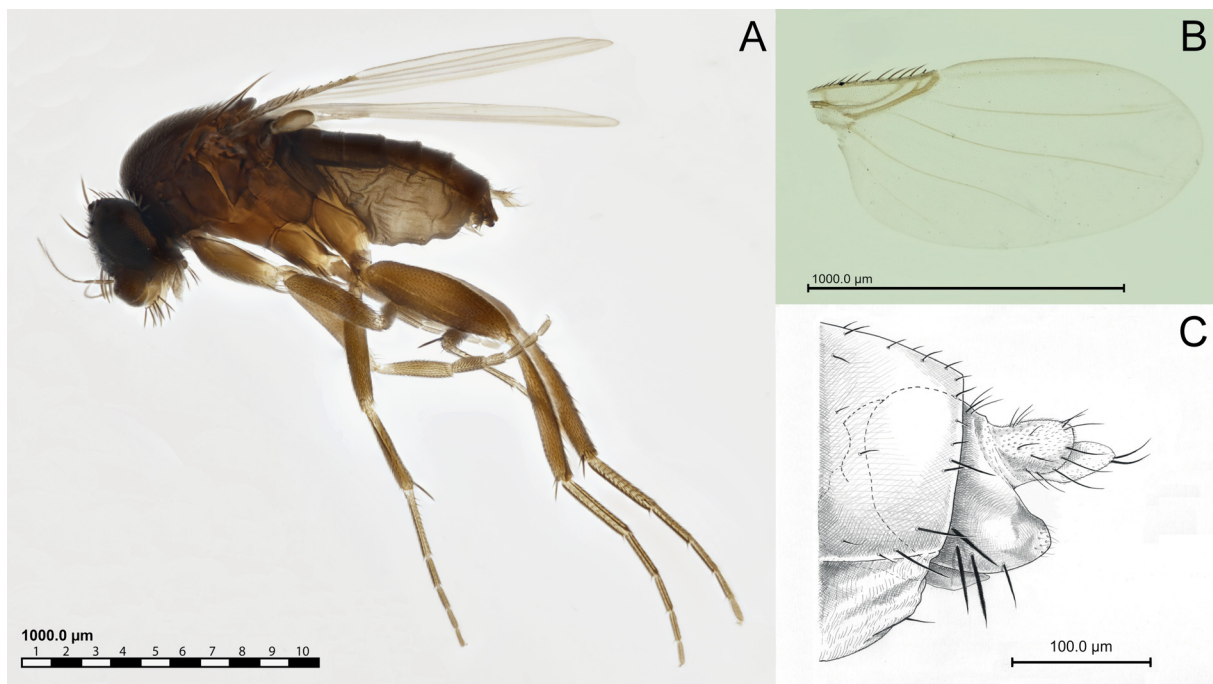
*Megaselia curta* Caruso, Bøggild & Grundmann sp. nov.

urn:lsid:zoobank.org:act:494EDA7C-0536-43DB-BAD5-2A2E6B388580

Fig. 4; Table 3

### Diagnosis

Costa short (0.36 of wing length). Epandrium shape similar to that of *M. unicolor* (Schmitz, 1919), but with 3 feathered bristles. Hypoproct excavated in the ventral part, similar to that of *M. involuta* (Wood,



**Fig. 4.** *Megaselia curta* Caruso, Bøggild & Grundmann sp. nov., holotype ♂ (SMNS\_DIP\_014298). A. Habitus. B. Wing. C. Terminalia. Specimen length 1.480 mm. Wing length 1.289 mm. Costal setae length 0.042 mm.

**Table 3.** *Megaselia curta* Caruso, Bøggild & Grundmann sp. nov. Description (following Hartop & Brown 2014a).

| <b>Head</b>                    |   |
|--------------------------------|---|
| SA ratio                       | 0.7   |
| VIF position                   | normal 'A'  |
| Palpal setae length            | long  |
| Labellum spinosity             | spinose   |
| <b>Thorax</b>                  |   |
| Anepisternum                   | hairs only (7 hairs)  |
| Relative halter color          | 'same' (bicolor: dorsal part brownish/same, ventral part whitish) |
| Number NP setae                | 3   |
| NP cleft                       | absent  |
| Scutellar setae                | 2+2   |
| <b>Legs</b>                    |   |
| Ts1 palisade                   | 1–4   |
| T2 palisade                    | 0.57  |
| T3 comb bifurcate              | absent  |
| T3 setulae                     | PD only   |
| F3 basal setae                 | B=AV  |
| F3 basal setae differentiation | absent  |
| <b>Wing</b>                    |   |
| Wing length                    | 1.289 mm  |
| Subcosta                       | incomplete but well developed                                     |
| Hair at base of R              | minute/short  |
| R2+3                           | present   |
| Costal index                   | 0.36  |
| Costal ratios                  | 7.50:1.25:1   |
| Costal setae length            | 0.04 mm   |
| Number alular setae            | 0   |
| Wing color                     | lightly infuscated  |
| <b>Genitalia</b>               |   |
| AT length                      | AT>E  |
| E setation                     | hairs + 3 strong and feathered bristles                           |
| Relative posterior setation    | T6=C=H<E  |

1910), but apical setae short and weak, up-curved and in a sub-apical position. Epandrium lobe edge with a 50° slope and with a short hair tuft at the tip. Couplet in Disney (1989): 86 (see Additions to the British key of *Megaselia* (Supp. file 1)).

### Etymology

Named after the short and stocky body, and the relatively short costa. From the Italian term '*corta*' (feminine, adjective) which means 'short, brief', derived from the Latin term '*curtare*' ('to shorten' or 'to cut short').

### Type material

#### Holotype

GERMANY • ♂; Baden-Württemberg, Lkr. Rems-Murr, Backnang; 48.955° N, 9.440° E; 294 m a.s.l.; 28 May–16 Jun. 2014; A. Rosenbauer leg.; BOLD no: SMNS\_1198055; SMNS, SMNS\_DIP\_014298.

### Paratypes

GERMANY • 1 ♂; Baden-Württemberg, Lkr. Rems-Murr, Backnang, Katharinenplaisir; 48.955° N, 9.440° E; 289 m a.s.l.; 28 May 2014; A. Rosenbauer leg.; BOLD no: SMNS\_1197547; SMNS, SMNS\_DIP\_013790 • 2 ♂♂; Niedersachsen Lkr. Lüchow-Dannenberg, Pevestorf; 53.064° N, 11.474° E; 23 m a.s.l.; 6 Aug. 2013; L. Krogmann leg.; BOLD nos: SMNS\_1196705, SMNS\_1204298 (COI); SMNS, SMNS\_DIP\_012964, SMNS\_DIP\_020150 • 1 ♂; Baden-Württemberg Lkr. Tübingen, Hirschau; 48.504° N, 8.996° E; 367 m a.s.l.; 9 Oct. 2014; T. Kothe leg.; BOLD no: SMNS\_1196861 (COI); SMNS, SMNS\_DIP\_013118.

### Description

HEAD. SA ratio 0.7. VIF position normal 'A'. Palpal setae long. Labellum spinose.

THORAX. Anepisternum with hairs only (7 hairs). Halter same color (bicolor: dorsal part brownish/same, ventral part whitish). NP setae 3. NP cleft absent. Scutellar setae 2+2.

LEGS. Ts1 palisade 1–4. T2 palisade 0.57. T3 comb bifurcate absent. T3 setulae PD only. F3 basal setae B=AV. F3 basal setae not differentiated.

WING. Length 1.289 mm. Subcosta incomplete but well developed. Base of R with short hair. R2+3 present. Costal index 0.36. Costal ratios 7.50:1.25:1. Costal setae 0.04 mm. Alular setae absent. Wing lightly infuscated.

GENITALIA. AT length AT>E. E setation hairs + 3 strong and feathered bristles. Posterior setation T6=C=H<E.

### *Megaselia robertoi* Caruso sp. nov.

urn:lsid:zoobank.org:act:C55EB707-6D68-49B6-BB31-3779230865E8

Fig. 5; Table 4

### Diagnosis

Palpal setae in apical position slightly (but certainly) longer than the maximum width of the palpus. Costal cilia as long as, or slightly longer than,  $R_{2+3}$ . Ventral surface of the hypandrial lobes covered with microscopic hairs. Differs from *M. cinereifrons* (Strobl, 1910) in having 2 NP setae (3 in *M. cinereifrons*) and an anal tube with a length-to-width ratio of ca 1.8:1 (Fig. 5C), compared to the more elongate and clavate form in *M. cinereifrons*, of 2.5:1 (Disney 1989: 125, fig. 438). Couplet in Disney (1989): 203 (see Additions to the British key of *Megaselia* (Supp. file 1)).

### Etymology

Named after Roberto Caruso, father of VC, to whom this species is dedicated.

### Type material

#### Holotype

GERMANY • ♂; Mecklenburg-Vorpommern, Lkr. Vorpommern-Rügen, Insel Rügen, Kniepow; 54.35° N, 13.35° E; 50 m a.s.l.; 27 Sep.–3 Oct. 2015; F. Koch leg.; BOLD no: SMNS\_1203320 (COI); SMNS, SMNS\_DIP\_019173.

#### Paratypes

GERMANY • 1 ♂; Baden-Württemberg, Lkr. Biberach, Altheim; 48.140° N, 9.449° E; 64 m a.s.l.; 1 Sep. 2013; H. Schmalfuss leg.; BOLD no: SMNS\_1202722 (COI); SMNS, SMNS\_DIP\_018597 • 2 ♂♂; Baden-Württemberg, Lkr. Rems-Murr, Backnang, Katharinenplaisir; 48.955° N, 9.440° E; 289 m

**Table 4.** *Megaselia robertoi* Caruso sp. nov. Description (following Hartop & Brown 2014a).

| <b>Head</b>                    |                            |
|--------------------------------|----------------------------|
| SA ratio                       | 0.80                       |
| VIF position                   | normal ‘~B’ (B/C)          |
| Palpal setae length            | long                       |
| Labellum spinosity             | sparse                     |
| <b>Thorax</b>                  |                            |
| Anepisternum                   | bare                       |
| Relative halter color          | ‘same’                     |
| Number NP setae                | 2                          |
| NP cleft                       | absent                     |
| Scutellar setae                | 2+2                        |
| <b>Legs</b>                    |                            |
| Ts1 palisade                   | 1–4                        |
| T2 palisade                    | 7.78                       |
| T3 comb bifurcate              | absent                     |
| T3 setulae                     | PD only                    |
| F3 basal setae                 | $B \geq AV$                |
| F3 basal setae differentiation | absent                     |
| <b>Wing</b>                    |                            |
| Wing length                    | 2.126 mm                   |
| Subcosta                       | incomplete                 |
| Hair at base of R              | long (2 setae)             |
| R2+3                           | present                    |
| Costal index                   | 0.42/45                    |
| Costal ratios                  | 4.00:1.83:1                |
| Costal setae length            | 0.1 mm                     |
| Number alular setae            | 3 to 5                     |
| Wing color                     | clear (hyaline)            |
| <b>Genitalia</b>               |                            |
| AT length                      | AT=E (7 setae each cercus) |
| E setation                     | hairs only                 |
| Relative posterior setation    | T6>C=H=E                   |

a.s.l.; 4 Sep. 2014; A. Rosenbauer leg.; BOLD nos: SMNS\_1198850, SMNS\_1198950 (COI); SMNS, SMNS\_DIP\_015093, SMNS\_DIP\_015193.

### Description

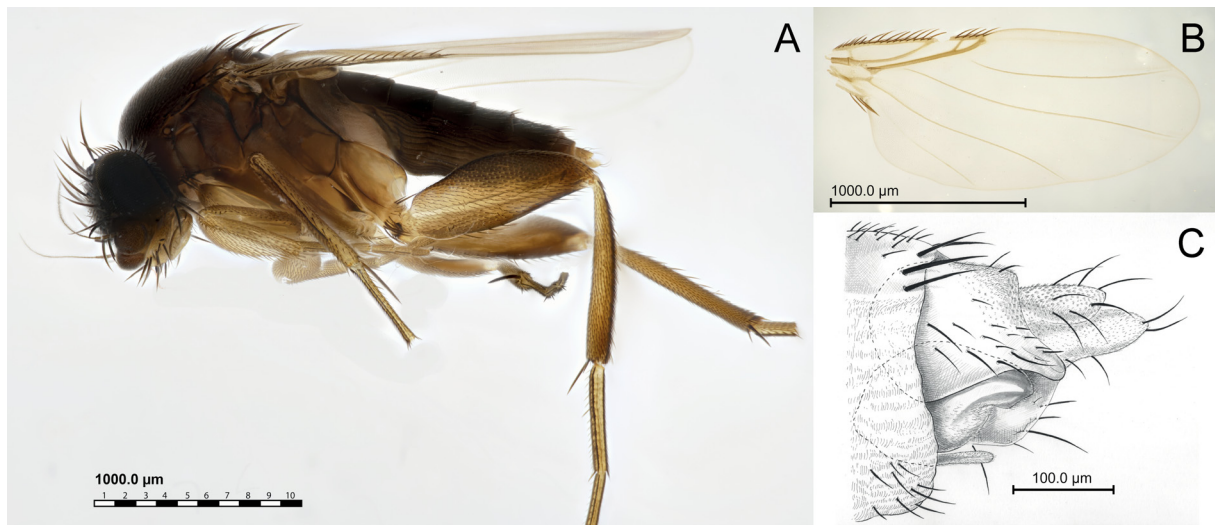
**HEAD.** SA ratio 0.80. VIF position normal ‘~B’ (B/C). Palpal setae long. Labellum spinose sparse.

**THORAX.** Anepisternum bare. Halter same color. NP setae 2. NP cleft absent. Scutellar setae 2+2.

**LEGS.** Ts1 palisade 1–4. T2 palisade 7.78. T3 comb bifurcate absent. T3 setulae PD only. F3 basal setae  $B \geq AV$ . F3 basal setae not differentiated.

**WING.** Length 2.126 mm. Subcosta incomplete. Base of R with 2 long hairs. R2+3 present. Costal index 0.42/45. Costal ratios 4.00:1.83:1. Costal setae 0.1 mm. Alular setae 3 to 5. Wing clear, hyaline.

**GENITALIA.** AT length AT=E, with 7 setae each cercus. E setation hairs only. Posterior setation T6>C=H=E.



**Fig. 5.** *Megaselia robertoi* Caruso sp. nov., holotype ♂ (SMNS\_DIP\_019173). A. Habitus. B. Wing. C. Terminalia. Specimen length 2.524 mm. Wing length 2.126 mm. Costal setae length 0.102 mm.

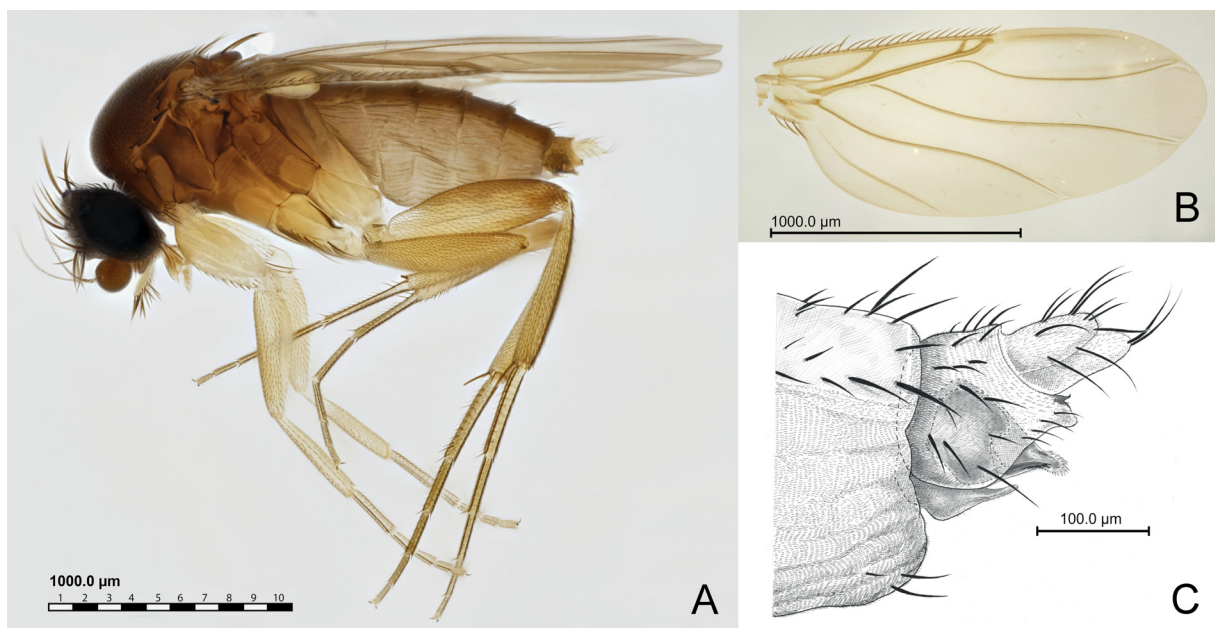
*Megaselia splendida* Caruso, Bøggild & Grundmann sp. nov.

urn:lsid:zoobank.org:act:B44063F4-63DD-44D5-AE4C-29C5C1089AC0

Fig. 6, Table 5

**Diagnosis**

Head darker than the body, with yellow palps. Light-brown body with yellow fore-legs. Antero-lateral and antial bristles close together at almost the same level on the frons, as in *M. costalis* (von Roser, 1840), from which it differs in the costal index and in the ratio between the dorsal length of the epandrium and



**Fig. 6.** *Megaselia splendida* Caruso, Bøggild & Grundmann sp. nov., holotype ♂ (SMNS\_DIP\_016074). A. Habitus. B. Wing. C. Terminalia. Specimen length 2.117 mm. Wing length 1.930 mm. Costal setae length 0.087 mm.

**Table 5.** *Megaselia splendida* Caruso, Bøggild & Grundmann sp. nov. Description (following Hartop & Brown 2014a).

| <b>Head</b>                    |                  |
|--------------------------------|------------------|
| SA ratio                       | 0.65             |
| VIF position                   | VFO adjacent 'C' |
| Palpal setae length            | long             |
| Labellum spinosity             | spinose sparse   |
| <b>Thorax</b>                  |                  |
| Anepisternum                   | bare             |
| Relative halter color          | lighter          |
| Number NP setae                | 3                |
| NP cleft                       | absent           |
| Scutellar setae                | 2+2              |
| <b>Legs</b>                    |                  |
| Ts1 palisade                   | 1–4              |
| T2 palisade                    | 0.70             |
| T3 comb bifurcate              | absent           |
| T3 setulae                     | PD only          |
| F3 basal setae                 | B>AV             |
| F3 basal setae differentiation | present          |
| <b>Wing</b>                    |                  |
| Wing length                    | 1.930 mm         |
| Subcosta                       | complete         |
| Hair at base of R              | short            |
| R2+3                           | present          |
| Costal index                   | 0.55/0.58        |
| Costal ratios                  | 5:5.2–4.7:1      |
| Costal setae length            | 0.09 mm          |
| Number alular setae            | 3                |
| Wing color                     | infuscated       |
| <b>Genitalia</b>               |                  |
| AT length                      | AT≤E             |
| E setation                     | hairs only       |
| Relative posterior setation    | T6>C=H≥E         |

the anal-tube. Basal setae of the hind femora longer than the antero-ventral setae, tapering abruptly to a fine point only near the curved tip of the seta. Couplet in Disney (1989): 199 and 232 (see Additions to the British key of *Megaselia* (Supp. file 1)).

### Etymology

Named after the Latin term '*splendidus*' (adjective), with the meaning of 'beautiful', 'magnificent'.

### Type material

#### Holotype

GERMANY • ♂; Bayern, Lkr. Berchtesgaden, Königsee, Rinnkendlsteig; 47.551° N, 12.964° E; 695 m a.s.l.; 26 Jul.–9 Aug. 2017; D. Doczkal and J. Voith leg.; BOLD no: SMNS\_1199918 (COD); SMNS, SMNS\_DIP\_016074.

### Paratypes

GERMANY • 1 ♂; Baden-Württemberg, Lkr. Biberach, Altheim; 48.140° N, 9.450° E; 64 m a.s.l.; 1 Sep. 2013; H. Schmalfluss leg.; BOLD no: SMNS\_1202538 (COI); SMNS, SMNS\_DIP\_018415 • 1 ♀; Baden-Württemberg, Lkr. Biberach, Altheim; 48.140° N, 9.450° E; 64 m a.s.l.; 2 Oct. 2013; H. Schmalfluss leg.; BOLD no: SMNS\_1202896 (COI); SMNS, SMNS\_DIP\_018761.

### Description

HEAD. SA ratio 0.65. VIF position VFO adjacent 'C'. Palpal setae long. Labellum spinose sparse.

THORAX. Anepisternum bare. Halter color lighter. NP setae 3. NP cleft absent. Scutellar setae 2+2.

LEGS. Ts1 palisade 1–4. T2 palisade 0.70. T3 comb bifurcate absent. T3 setulae PD only. F3 basal setae B>AV. F3 basal setae differentiated.

WING. Length 1.930 mm. Subcosta complete. Base of R with short hair. R2+3 present. Costal index 0.55/0.58. Costal ratios 5:5.2–4.7:1. Costal setae 0.09 mm. Alular setae 3. Wing infuscated.

GENITALIA. AT length AT≤E. E setation hairs only. Posterior setation T6>C=H≥E.

### Redescription

#### *Megaselia romphaea* (Schmitz, 1947)

Fig. 7; Table 6

*Plastophora romphaea* Schmitz, 1947: 114–116, fig. 1.

### Diagnosis

Postpedicel enlarged, slightly oblong rather than globular, and flattened laterally. Arista short. Only 2 supra-antennal setae (anterior pair absent). Mid tibia with short AD and PD rows of spines, separated by a palisades row. F3 basal setae differentiation present (basal setae long and strong, not crowded, reaching mid length of F). Abdominal sternites 3–7 with hairs. Cerci enlarged and laterally compressed, covered by hairs only (~20 per cercus), hypoproct with 2 robust but short up-curved setae. Terminalia overall shape similar to that of *M. egena* Collin, 1912, a species known from the Seychelles, and *M. scalaris* (Loew, 1866), but with hypoproct apical setae shorter and non-feathered. Couplet in Disney (1989): 1 (see Additions to the British key of *Megaselia* (Supp. file 1)).

### Type material

#### Holotype

AUSTRIA • ♂; Oberkärnten am Penzelberg; 1300–1400 m a.s.l.; 12 Jul. 1946; H. Schmitz leg.; ZFMK DIP 00012399.

### Other material examined

GERMANY • 1 ♂; Bayern, Lkr. Berchtesgaden, Königsee, Rinnkendlsteig; 47.554° N, 12.965° E; 29 Jun.–13 Jul. 2017; D. Doczkal and J. Voith leg.; BOLD no: SMNS\_1199712 (COI); SMNS, SMNS\_DIP\_015955 • 1 ♂; Bayern, Lkr. Berchtesgaden Königsee, Rinnkendlsteig; 47.554° N, 12.965° E; 694 m a.s.l.; 30 Jun. 2017; D. Doczkal leg.; BOLD no: SMNS\_1199564 (COI); SMNS, SMNS\_DIP\_015807.

### Redescription

HEAD. SA ratio 0.0 (only 2 SA). VIF position normal 'B'. Palpal setae long. Labellum with scattered spinosity.

THORAX. Anepisternum with 7 hairs + one long bristle. Halter color same (dark brown). NP setae 2. NP cleft absent. Scutellar setae 2+2.

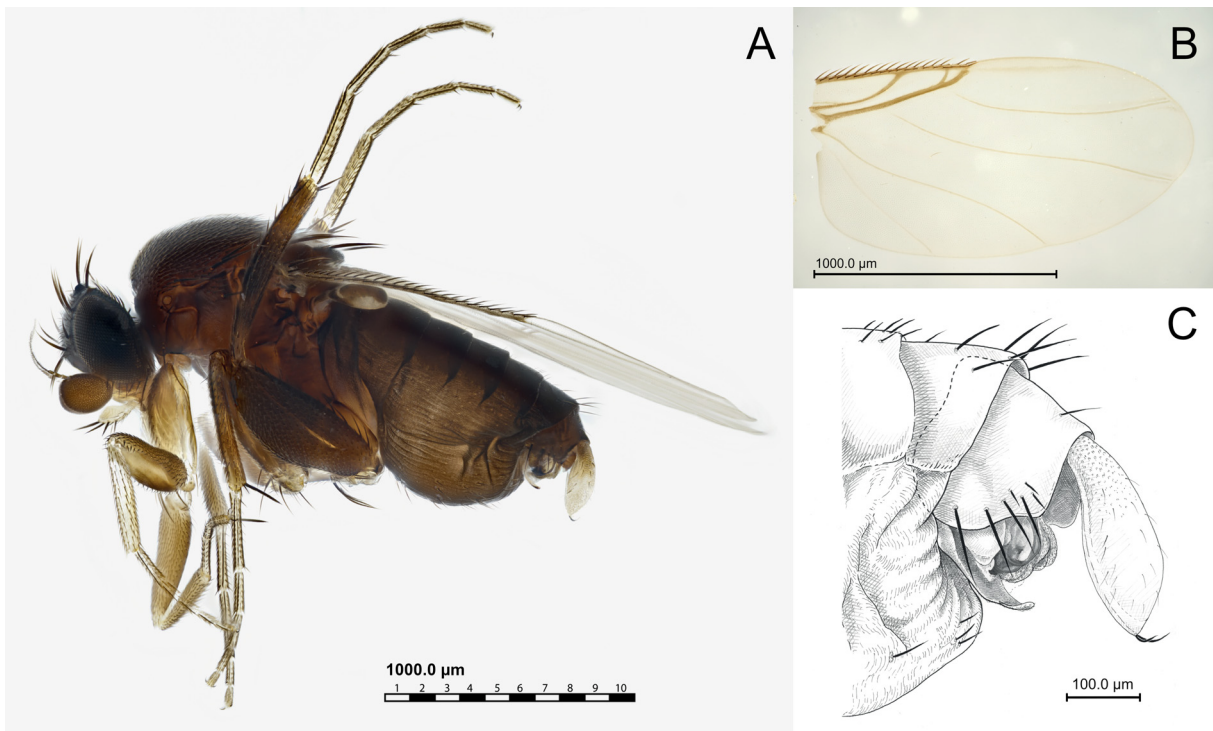
LEGS. Ts1 palisade 1–5. T2 palisade 0.8/0.85. T3 comb bifurcate absent. T3 setulae PD only. F3 basal setae B>AV. F3 basal setae differentiated.

WING. Length 1.912 mm. Subcosta incomplete, almost absent. Base of R without hairs. R2+3 present. Costal index 0.50/0.55. Costal ratios 4.6:2.3:1. Alular setae 4+. Wing clear to lightly infuscated.

GENITALIA. AT length AT>E. E setation hairs + bristles. Posterior setation T6>C<H>E.

### Remarks

*Megaselia romphaea* was originally described by Schmitz (1947) under the genus *Plastophora* Brues, 1905, a taxon that has since been synonymized with *Megaselia*. The original description (Schmitz 1947), based on a single male specimen, lacks illustrations suitable for reliable identification and is available only in German, which has likely contributed to the species being largely overlooked in subsequent studies. To our knowledge, no records of *M. romphaea* have been published since its original description, and no modern documentation of the species exists. The holotype of *M. romphaea* is housed at ZFMK. It is pinned and in relatively good condition; one leg and one wing have been removed and mounted on a slide, and the thorax is partly damaged by the pin. During GBOL sampling, two male specimens conforming to Schmitz's description were collected in the Königsee area (Supp. file 2), representing the first confirmed records of the species in over 75 years. Here, we provide a modern redescription of *M. romphaea* based on study of these newly collected specimens and the holotype.



**Fig. 7.** *Megaselia romphaea* (Schmitz, 1947), ♂ (SMNS\_DIP\_015955). A. Habitus. B. Wing. C. Terminalia. Specimen length 2.425 mm. Wing length 1.912 mm. Costal setae length 0.082 mm.

**Table 6.** *Megaselia romphaea* (Schmitz, 1947) redescription (following Hartop & Brown 2014a).

| <b>Head</b>                    |                             |
|--------------------------------|-----------------------------|
| SA ratio                       | 0.0 (only 2 SA)             |
| VIF position                   | normal ‘B’                  |
| Palpal setae length            | long                        |
| Labellum spinosity             | scattered                   |
| <b>Thorax</b>                  |                             |
| Anepisternum                   | 7 hairs + one long bristle  |
| Relative halter color          | same (dark brown)           |
| Number NP setae                | 2                           |
| NP cleft                       | absent                      |
| Scutellar setae                | 2+2                         |
| <b>Legs</b>                    |                             |
| Ts1 palisade                   | 1–5                         |
| T2 palisade                    | 0.8/0.85                    |
| T3 comb bifurcate              | absent                      |
| T3 setulae                     | PD only                     |
| F3 basal setae                 | B>AV                        |
| F3 basal setae differentiation | present                     |
| <b>Wing</b>                    |                             |
| Wing length                    | 1.912 mm                    |
| Subcosta                       | incomplete (almost absent)  |
| Hair at base of R              | absent                      |
| R2+3                           | present                     |
| Costal index                   | 0.50/0.55                   |
| Costal ratios                  | 4.6:2.3:1                   |
| Number alular setae            | 4+                          |
| Wing color                     | clear to lightly infuscated |
| <b>Genitalia</b>               |                             |
| AT length                      | AT>E                        |
| E setation                     | hairs + bristles            |
| Relative posterior setation    | T6>C<H>E                    |

## Discussion

The bibliography of descriptions and keys for species of *Megaselia* is fragmented and difficult to find, and many of the more complete and detailed keys are not in English. Currently, Disney’s (1989) key remains one of the best available for European species, and when complemented by the additions provided here, becomes a much more comprehensive and user-friendly resource for identifying *Megaselia* species beyond the British Isles. By releasing all additions made to the key during 1990–2025, together with all Palearctic species not covered by the original key, this study provides a significant update to the identification resources available for Palearctic *Megaselia*, integrating 393 species and transforming the key into a modern, accessible tool for identifying species of this notoriously complex genus. The inclusion of additions facilitates a more accurate navigation of *Megaselia* diversity and enables direct linkage to the primary literature at the couplet level. This update thus converts a country-specific key into a Palearctic framework, providing much-needed guidance for researchers dealing with the fragmented and often inaccessible taxonomy of this genus.

This work also presents the description of four species of *Megaselia* new to science, captured in Germany during the GBOL project, sequenced for the COI gene and described during the ‘GBOL III: Dark Taxa’ through large-scale molecular screening of more than 9000 specimens using DNA barcoding.

In an attempt to shed light on the extreme diversity of this difficult group, the application of new methodologies that allow effective but rapid identification of species now seems essential (Srivathsan *et al.* 2019, 2021, 2024; Hartop *et al.* 2022; Caruso *et al.* 2024). This discovery of new species in Germany, whose fauna is one of the best known globally (Morinière *et al.* 2019; Caruso *et al.* 2024), underscores the need for continued efforts in exploring and documenting biodiversity, with even greater attention in countries with higher biodiversity. Unfortunately, describing species which are captured through passive trapping methods (e.g., Malaise traps) provides only limited ecological information and no ethological or life-history data, and field observation is now increasingly disappearing. At the same time, studies aimed at a few specimens take a long time and do not satisfy the growing and urgent need for biodiversity investigation, in a world that is facing an increasingly rapid loss of species.

## Acknowledgments

We thank Dr Rudolf Meier for funding and facilitating the barcoding for this project, and the lab team, especially Leshon Lee, for their dedicated work. Thanks to Dr Verner Michelsen, for his great help in identifying the specimen of *Megaselia romphaea* and Dr Ximo Mengual for the opportunity to consult the holotype of *M. romphaea* from the ZFMK collection for the purpose of identification and redescription of the species. Thanks to Aron Bellersheim (SMNS) for imaging the wings. Thanks to Dr Aleida Ascenzi (Università degli Studi della Tuscia) for reviewing and helping with names ideation. Funding was provided by the Bundesministerium für Bildung und Forschung, Berlin, Germany, through the “German Barcode of Life III: Dark Taxa” (FKZ 16LI1901C) project. The specimens come from sampling carried out respectively by “Verbundprojekt GBOL – German Barcode of Life” (FKZ 01LI1101C) and “GBOL-Verbund: German Barcode of Life – Von der Wissenschaft zur Anwendung (GBOL-II)” (FKZ 01LI1501C).

## References

- Borgmeier T. 1964. Revision of the North American phorid flies. Part II. The species of the genus *Megaselia*, subgenus *Aphiochaeta*. *Studia Entomologica* 7: 257–416.
- Borgmeier T. 1966. Revision of the North American phorid flies. Part III. The species of the genus *Megaselia*, subgenus *Megaselia*. *Studia Entomologica* 8 (1965): 1–160.
- Brower A.V.Z. & DeSalle R. 2024. DNA barcodes in taxonomic descriptions. *In*: DeSalle R. (ed.) *DNA Barcoding. Methods in Molecular Biology* 2744: 105–115. Humana, New York, NY. [https://doi.org/10.1007/978-1-0716-3581-0\\_5](https://doi.org/10.1007/978-1-0716-3581-0_5)
- Brown B.V. 2022a. Some remarkably common, but undescribed, *Megaselia* Rondani (Diptera: Phoridae) from northwestern Costa Rica. *Zootaxa* 5120 (3): 373–390. <https://doi.org/10.11646/zootaxa.5120.3.4>
- Brown B.V. 2022b. Two new genera of phorid flies, *Macgrathphora* and *Aurisetiphora*, from Costa Rica (Diptera: Phoridae), with recommendations for naming new genera in the family. *Zootaxa* 5115 (4): 571–581. <https://doi.org/10.11646/zootaxa.5115.4.7>
- Caruso V., Hartop E., Chimeno C., Noori S., Srivathsan A., Haas M., Lee L., Meier R. & Whitmore D. 2024. An integrative framework for dark taxa biodiversity assessment at scale: A case study using *Megaselia* (Diptera, Phoridae). *Insect Conservation and Diversity* 17 (6): 968–987. <https://doi.org/10.1111/icad.12762>
- Caruso V., Grundmann B. & Bøggild E. 2025. A remarkable new species of the *Megaselia sulphuripes* group: *Megaselia heimingshofensis* n. sp. from Central and Eastern Europe (Diptera, Phoridae). *Integrative Systematics: Stuttgart Contributions to Natural History* 8 (2): 91–96. <https://doi.org/10.18476/2025.439658>

- Disney R.H.L. 1983. Scuttle flies. Diptera: Phoridae (except *Megaselia*). *Handbooks for the Identification of British Insects Vol. 10, Part 6*. Royal Entomological Society of London, London.
- Disney R.H.L. 1988. The Palaearctic species resembling *Megaselia pygmaea* (Diptera, Phoridae), including two new species. *Annales Entomologici Fennici* 54: 153–161.
- Disney R.H.L. 1989. Scuttle flies. Diptera: Phoridae. Genus *Megaselia*. *Handbooks for the Identification of British Insects Vol. 10, Part 8*. Royal Entomological Society of London, London.
- Disney R.H.L. 1991. Family Phoridae. In: Soós Á. & Papp L. (eds) *Catalogue of Palaearctic Diptera 7*: 143–205. Akadémiai Kiadó, Budapest; Elsevier, Amsterdam.
- Disney R.H.L. 1994. *Scuttle Flies: The Phoridae*. Chapman & Hall, London.  
<https://doi.org/10.1093/aesa/88.4.589>
- Disney R.H.L. 1999. A troublesome sibling species complex of scuttle flies (Diptera: Phoridae) revisited. *Journal of Natural History* 33: 1159–1216. <https://doi.org/10.1080/002229399299987>
- Disney R.H.L. 2006a. Two new sibling species of *Megaselia consueta* (Collin) (Dipt., Phoridae) from Arabia and the Seychelles. *Entomologist's Monthly Magazine* 142: 115–125.
- Disney R.H.L. 2006b. Revision of the Palaearctic members of the species complex resembling *Megaselia brevior* (Schmitz) (Diptera: Phoridae). *Fragmenta Faunistica* 49 (1): 41–51.  
<https://doi.org/10.3161/00159301FF2006.49.1.041>
- Disney R.H.L. 2009a. Scuttle flies (Diptera: Phoridae) Part II: the genus *Megaselia*. *Fauna of Arabia* 24: 249–357.
- Disney R.H.L. 2009b. 11. Superfamily Platypezoidea – Family PHORIDAE. In: Gerlach J. (eds) *The Diptera of the Seychelles Islands*: 161–231. Series Faunistica 85, Pensoft Publishers.
- Disney R.H.L. 2014. Revisionary notes on the *Megaselia sulphuripes* (Meigen) species group (Diptera: Phoridae). *Entomologist's Monthly Magazine* 150: 211–225.
- Disney R.H.L. (in press). *A Catalogue of Palaearctic Phoridae (Diptera)*. Cambridge Scholars Publishing Limited, Lady Stephenson Library, Welbeck Road, Newcastle Upon Tyne NE6 2PA, UK.
- Disney R.H.L. & Aguiar A.M.F. 2008. Scuttle flies (Diptera: Phoridae) of Madeira. *Fragmenta faunistica* 51 (1) 23–62. <https://doi.org/10.3161/00159301FF2008.51.1.023>
- Disney R.H.L. & Bøggild E. 2021. Nineteen new species of *Megaselia* Rondani (Diptera, Phoridae) from Denmark. *Zootaxa* 4975 (2): 306–342. <https://doi.org/10.11646/zootaxa.4975.2.4>
- Mostovski M.B 2016. A review of scuttle fly genera of Israel (Diptera: Phoridae), with new records and an identification key. *Zootaxa* 4137 (1): 61–72. <https://doi.org/10.11646/zootaxa.4137.1.4>
- German Barcode of Life Consortium (Wägele W., Haszprunar G., Eder J., Xylander W., Borsch T., Quandt D., Grobe P., Pietsch S., Geiger M., Astrin J., Rulik B., Hausmann A., Moriniere J., Holstein J., Krogmann L., Monje C., Traunspurger W., Hohberg K., Lehmitz R., Müller K., Nebel M. & Hand R.) 2020. GBOL Webportal at <https://www.bolgermany.de>. [Dataset]. Version: 20170316. Data Publisher: Zoological Research Museum Koenig – Leibniz Institute for Animal Biodiversity.
- Hartop E. & Brown B. 2014a. The tip of the iceberg: a distinctive new spotted-wing *Megaselia* species (Diptera: Phoridae) from a tropical cloud forest survey and a new, streamlined method for *Megaselia* descriptions. *Biodiversity Data Journal* 2: e4093. <https://doi.org/10.3897/BDJ.2.e4093>
- Hartop E. & Brown B.V. 2014b. Recognition of *Megaselia arizonensis* (Malloch, 1912) (Diptera: Phoridae), a common North American fly. *Contributions in Science* 522: 45–49. <https://doi.org/10.5962/p.226780>

- Hartop E., Brown B.V. & Disney R.H.L. 2015. Opportunity in our ignorance: urban biodiversity study reveals 30 new species and one new Nearctic record for *Megaselia* (Diptera: Phoridae) in Los Angeles (California, USA). *Zootaxa* 3941 (4): 451. <https://doi.org/10.11646/zootaxa.3941.4.1>
- Hartop E., Häggqvist S., Ulefors S.O. & Ronquist F. 2020. Scuttling towards monophyly: phylogeny of the mega-diverse genus *Megaselia* (Diptera: Phoridae). *Systematic Entomology* 46 (1): 71–82. <https://doi.org/10.1111/syen.12448>
- Hartop E., Srivathsan A., Ronquist F. & Meier R. 2022. Towards large-scale integrative taxonomy (LIT): resolving the data conundrum for dark taxa. *Systematic Biology* 71 (6): 1404–1422. <https://doi.org/10.1093/sysbio/syac033>
- Hausmann A., Krogmann L., Peters R., Rduch V. & Schmidt S. 2020. GBOL III: Dark Taxa. Researchers launch new BIOSCAN project that aims to illuminate thousands of new insect species on Germany's doorstep. *iBOL Barcode Bulletin* 10 (1). <https://doi.org/10.21083/ibol.v10i1.6242>
- Helicon Soft Ltd. 2024. Helicon Focus. ver. 8.2.2. Available from <https://www.heliconsoft.com> [accessed 27 Feb. 2026].
- Li X., Hash J.M., Hartop E., Yang D., Smith P.T. & Brown B.V. 2025. A molecular phylogeny of scuttle flies (Diptera: Phoridae) unveils extensive concordance but intriguing divergences from morphological results. *Systematic Entomology* 50 (1): 68–81. <https://doi.org/10.1111/syen.12644>
- Marshall S.A. 2012. *Flies – The Natural History and Diversity of Diptera*. Firefly Books, New York & Richmond Hill.
- Meier R., Wong W., Srivathsan A. & Foo M. 2016. \$1 DNA barcodes for reconstructing complex phenomes and finding rare species in specimen-rich samples. *Cladistics* 32 (1): 100–110. <https://doi.org/10.1111/cla.12115>
- Morinière J., Balke M., Doczkal D., Geiger M.F., Hardulak L.A., Haszprunar G., Hausmann A., Hendrich L., Regalado L., Rulik B., Schmidt S., Wägele J.W. & Hebert P.D.N. 2019. A DNA barcode library for 5,200 German flies and midges (Insecta: Diptera) and its implications for metabarcoding-based biomonitoring. *Molecular Ecology Resources* 19 (4): 900–928. <https://doi.org/10.1111/1755-0998.13022>
- Pape T., Beuk P., Pont A.C., Shatalkin A.I., Ozerov A.L., Woźnica A.J., Merz B., Bystrowski C., Raper C., Bergström C., Kehlmaier C., Clements D.K., Greathead D., Kameneva E.P., Nartshuk E., Petersen F.T., Weber G, Bächli G, Geller-Grimm F., ... & Jong Y. de 2015. Fauna Europaea: Diptera – Brachycera. *Biodiversity Data Journal* 3: e4187. <https://doi.org/10.3897/BDJ.3.e4187>
- Schmitz H. 1927. Revision der Phoridengattungen, mit Beschreibung neuer Gattungen und Arten. *Natuurhistorisch Maandblad* 16: 30–39, 45–50, 59–68, 72–79, 92–100, 110–116, 128–132, 142–148, 164, 176.
- Schmitz H. 1936. Phoridae. In: Frey R. (ed.) *Die Dipterenfauna der Kanarischen Inseln und ihre Probleme. Societas Scientiarum Fennica, Commentationes Biologicae* 6: 70–82.
- Schmitz H. 1947. Neue Phoriden aus Österreich (Diptera). *Brotéria (Serie Ciências Naturais)* 16: 114–121.
- Schmitz H. 1951. Familie 33: Phoridae. In: Lindner E. (ed.) *Die Fliegen der Palaearktischen Region. Lieferung 165, Band 4 (7)*: 241–272. E. Schweizerbart'sche Verlagsbuchhandlung, Stuttgart.
- Schmitz H. 1981. Familie 33: Phoridae. In: Lindner E. (ed.) *Die Fliegen der Palaearktischen Region. Lieferungen 141, 187, 196, 202, 258, 301, 325, Band 4 (33)*: 1–712. E. Schweizerbart'sche Verlagsbuchhandlung, Stuttgart.

Schumann H., Bährmann R. & Stark A. (eds) 1999. Checkliste der Dipteren Deutschlands. *Studia Dipterologica – Supplement 2*: 1–354.

Srivathsan A., Hartop E., Puniamoorthy J., Lee W.T., Kutty S.N., Kurina O. & Meier R. 2019. Rapid, large-scale species discovery in hyperdiverse taxa using 1D MinION sequencing. *BMC Biology* 17: 96. <https://doi.org/10.1186/s12915-019-0706-9>

Srivathsan A., Lee L., Katoh K., Hartop E., Kutty S.N., Wong J., Yeo D. & Meier R. 2021. ONTbarcoder and MinION barcodes aid biodiversity discovery and identification by everyone, for everyone. *BMC Biology* 19: 217. <https://doi.org/10.1186/s12915-021-01141-x>

Srivathsan A., Feng V., Suárez D., Emerson B. & Meier R. 2024. ONTbarcoder 2.0: rapid species discovery and identification with real-time barcoding facilitated by Oxford Nanopore R10.4. *Cladistics* 40: 192–203. <https://doi.org/10.1111/cla.12566>

The GIMP Development Team 2024. GIMP (GNU Image Manipulation Program). ver. 2.10.38. Available from <https://www.gimp.org>. [accessed 29 May 2024].

Yeo D., Srivathsan A. & Meier R. 2020. Longer is not always better: Optimizing barcode length for large-scale species discovery and identification. *Systematic Biology* 69 (5): 999–1015. <https://doi.org/10.1093/sysbio/syaa014>

Printed versions of all papers are deposited in the libraries of two of the institutes that are members of the *EJT* consortium: Muséum national d’Histoire naturelle, Paris, France and Royal Museum for Central Africa, Tervuren, Belgium. The other members of the consortium are: Royal Belgian Institute of Natural Sciences, Brussels, Belgium; Meise Botanic Garden, Meise, Belgium; Natural History Museum of Denmark, Copenhagen, Denmark; Naturalis Biodiversity Center, Leiden, the Netherlands; Museo Nacional de Ciencias Naturales-CSIC, Madrid, Spain; Leibniz Institute for the Analysis of Biodiversity Change, Bonn – Hamburg, Germany; National Museum of the Czech Republic, Prague, Czech Republic; The Steinhardt Museum of Natural History, Tel Aviv, Israël.

## Supplementary files

**Supp. file 1.** Additions to the British key of *Megaselia*.  
<https://doi.org/10.5852/ejt.2026.1048.3253.14391>

**Supp. file 2.** Data of examined specimens.  
<https://doi.org/10.5852/ejt.2026.1048.3253.14393>