



Received: 10 October 2025 • Accepted: 13 April 2026 • Published: 2 June 2026

Topic editor: Tony Robillard • Section editor: Frédéric Legendre • Desk editor: Lizeth Alonso

## Monograph

[urn:lsid:zoobank.org/pub:9821D5CC-3DE1-4279-A9FD-2AC130EC9650](https://zoobank.org/pub:9821D5CC-3DE1-4279-A9FD-2AC130EC9650)

# An annotated catalogue of type and non-type material of praying mantises (Insecta: Mantodea) housed in the Zoological Museum of the University of Greifswald (ZIMG), Germany

Tobias MAINDA<sup>1</sup>  , Peter MICHALIK<sup>2</sup>   & Lara LOPARDO<sup>3,\*</sup>  

<sup>1,2,3</sup>Zoological Institute and Museum, University of Greifswald,  
Loitzer Str. 26, 17489 Greifswald, Germany.

\*Corresponding author: [lara.lopardo@uni-greifswald.de](mailto:lara.lopardo@uni-greifswald.de)

<sup>1</sup>Email: [tobias.mainda@uni-greifswald.de](mailto:tobias.mainda@uni-greifswald.de)

<sup>2</sup>Email: [michalik@uni-greifswald.de](mailto:michalik@uni-greifswald.de)

**Abstract.** We present an annotated catalogue compiling all of praying mantises (Mantodea) specimens housed at the Zoological Institute and Museum Greifswald (ZIMG, Germany), mostly from Gerstäcker's collection. Images of all type specimens and their corresponding labels are also included. In addition, comments about the type status of specimens previously misidentified as types or incorrectly designated are provided. The ZIMG collection of Mantodea comprises a total of 395 specimens, representing 145 species. Among these, 30 specimens serve as type specimens for 20 species, with 29 originating from the historical Gerstäcker collection. Notably, only one of the type specimens is currently missing: the holotype of *Acanthops contorta* Gerstaecker, 1889, was loaned in the 1990s to an entomologist in Catania (Italy) and has yet to be returned. The non-type material consists of 365 specimens, representing 129 species or subspecies. The catalogue enhances access to specimens and their associated data, particularly from a historically obscure collection such as Gerstäcker's. By doing so, it supports comparative and historical research and provides a reliable foundation for taxonomy, nomenclatural stability, and biodiversity studies.

**Keywords.** Gerstaecker, nomenclature, taxonomy, type images.

Mainda T., Michalik P. & Lopardo L. 2026. An annotated catalogue of type and non-type material of praying mantises (Insecta: Mantodea) housed in the Zoological Museum of the University of Greifswald (ZIMG), Germany. *European Journal of Taxonomy* 1063: 1–79. <https://doi.org/10.5852/ejt.2026.1063.3287>

## Introduction

Founded in 1456, the University of Greifswald in Germany ranks among the oldest institutions of higher education in Central Europe and is the second oldest in the Baltic Sea region. The University's Zoological Institute and Museum Greifswald (ZIMG) originated from a modest natural history collection established in 1819 by Christian Friedrich Hornschuch (1793–1850) and has since developed into extensive

zoological collections encompassing all main animal taxa (Michalik *et al.* 2010). The insect collection represents the most extensive assemblage in the institution, including the substantial beetle collection of Szczecin entomologist Carl Otto Friedrich Gustav Schmidt (1788–1863), and the insect collections of Karl Pogge and Emil von Bernuth (1807–1874).

Of particular significance is the comprehensive and diverse insect collection of Carl Eduard Adolph Gerstäcker (1828–1895), Professor of Zoology at the University of Greifswald from 1876 to 1895. The Gerstäcker collection, often cited under the name Gerstaecker, comprises 240 wooden insect boxes (Fig. 1) containing approximately 20 000 species/specimens, including about 500 types, across various orders and from various sources, including material collected by Reinhold Buchholz (1837–1876) during his West-Africa expedition (1872–1875). Although sufficiently documented and in good condition, the Gerstäcker collection at ZIMG has remained largely unknown to the scientific community. Containing instances of misidentification and ambiguous type status, and given the absence of comprehensive published accounts, the collection is in need of a modern, authoritative catalogue. Specifically, in the order Mantodea Burmeister, 1838, Gerstäcker described 26 new species and three new genera (*Anastira* Gerstaecker, 1883, *Leptocola* Gerstaecker, 1883, and *Pyrgomantis* Gerstaecker, 1869) from Africa and South America alone (Gerstaecker 1869, 1883, 1889). While some of his Mantodea specimens are preserved at the Museum für Naturkunde in Berlin (MfN, where he served as curator of Entomology from 1854 to 1876) (Deckert 1999), the majority of the Gerstäcker collection is preserved at ZIMG in Greifswald.

The following catalogue compiles and details all Mantodea specimens housed at the ZIMG, most of which originate from Gerstäcker’s collection. It includes references to original descriptions, currently accepted names, images of the type specimens and their associated labels, and comments that provide further details about the type status and the condition of the specimens. The Gerstäcker collection is of



**Fig. 1.** Storage cabinet containing drawers of pinned insect specimens from the Gerstaecker collection at the ZIMG. Each drawer houses meticulously curated specimens, organized by taxonomic group.

particular nomenclatural and systematic importance, as it contains historically significant type and non-type material associated with early species descriptions that continue to underpin modern Mantodea taxonomy. The aim of this catalogue is to improve access to Mantodea type material, providing a critical foundation for taxonomic research, nomenclatural stability, systematic revision, and future biodiversity research in Mantodea.

## Material and methods

### Photography

Images of type specimens and their labels were taken with the BK PLUS Lab system (Dun Inc.) using Canon 50 mm and Canon 65 mm macro lenses mounted on a Canon 5D Mark II camera. Image stacks were captured with Adobe Lightroom and processed using Zerene Stacker with the PMax setting. Obtained extended focus images were edited using Adobe Photoshop CS 6.

### Label data

All labels are transcribed verbatim. For each specimen, the full text on a single label is enclosed in quotation marks (“”); a double slash (//) separates different labels; a single slash (/) separates lines within one label. The label colors of most specimens correspond to their continents of origin: blue for Africa, yellow for Asia, green for America, violet for Australia, and white for Europe. Additionally, historical species labels marked with an asterisk were commonly used to indicate type material or (non-type) specimens cited in subsequent publications. Particularly for type material, historical labels also include a distinctly thick, rounded colored (“dot”) label beside specimens or series (red usually for holotype/syntypes, yellow for paratypes).

The current abbreviation for the Zoological Museum and Institute Greifswald is ZIMG. However, some older labels retain the acronym EMAU, which refers to a former name of the university—Ernst-Moritz-Arndt University of Greifswald.

### Taxonomy

Unless otherwise noted, this catalogue follows the taxonomic classification of Schwarz & Roy (2019), as updated in the online taxonomic database Mantodea Species File Online (Otte *et al.* 2025). Species names are listed alphabetically, first by current genus name, then by species epithet. For type specimens, the catalogue includes the original combinations as well as references to currently accepted names, and comments that provide further details about their type status. In addition, when the original description of a species is based on a single specimen, that specimen is treated here as the holotype by monotypy, in accordance with Article 73 of the ICZN (1999).

## Results

The praying mantis collection (order Mantodea) housed within the insect collection of the Zoological Institute and Museum Greifswald (ZIMG) comprises a total of 395 specimens, representing 145 distinct species (including subspecies). This assemblage is notable both for its taxonomic extent and for its historical significance, reflecting over a century of entomological research and curatorial activity.

Of the total collection, 30 specimens have been identified as type material, corresponding to 20 valid species. A substantial majority of this type material—29 specimens—originates from the renowned historical Gerstäcker collection. One type specimen, however, is currently unaccounted for: the holotype of *Acanthops contorta* Gerstaecker, 1889. This specimen was loaned during the 1990s to an entomologist based in Catania, Italy, and has not yet been returned to the institution (see section below for further details).

The non-type material comprises 365 specimens, representing 129 valid species or subspecies. While these specimens do not serve as name-bearing types, they nonetheless provide valuable insights into species diversity, morphology, and historical collection efforts. A small number of specimens were at various times erroneously identified as type material, or incorrectly labeled as lectotypes or paralectotypes. These inconsistencies were resolved through detailed morphological examination, comparison with original descriptions, and consultation with contemporary taxonomic literature and expert opinion. Clarifications and corrections of these misidentifications are presented in detail in the following section.

## Catalogue

Class Insecta Linnaeus, 1758  
Order Mantodea Burmeister, 1838  
Family Acanthopidae Burmeister, 1838  
Genus *Acanthops* Audinet-Serville, 1831

*Acanthops* Audinet-Serville, 1831: 52.

*Acanthops adusta* Gerstaecker, 1889  
Fig. 2

## Type material

See *Metilia brunnerii* (Saussure, 1871).



**Fig. 2.** *Acanthops adusta* Gerstaecker, 1889, holotype, ♂ (ZIMG-II-27297), habitus and labels. Metric scale showing a 1 cm black bar for reference.

*Acanthops contorta* Gerstaecker, 1889

*Acanthops contorta* Gerstaecker, 1889: 56.

**Type material**

**Holotype**

PERU • ♀; “Iquitos / Amazonas”; ZIMG-II-27298.

**Type locality**

Peru, Iquitos.

**Current status**

Valid species.

**Remarks**

The holotype was loaned to Francesco Lombardo (Department of Animal Biology, University Catania, Italy) for his revision of the genus *Acanthops* (Lombardo & Ippolito 2004) and never returned to Greifswald. Repeated requests over the last decade to him and different officials in his home institution to return the specimen have so far gone unanswered.

*Acanthops falcata* Stål, 1877

*Acanthops falcata* Stål, 1877: 90.

**Material examined** (1 male)

VENEZUELA • 1 ♂; green label “chimaera / Mus. Ber” // two white labels “3596 x. / La Guayra / J. Smith” // “*Acanthops falcata* / Stål, 1877 / det. R. Ehrmann, III. 1999”; ZIMG.

*Acanthops falcataria* (Goeze, 1778)

*Mantis falcataria* Goeze, 1778: 36.

**Material examined** (1 male, 4 females)

BRAZIL • 1 ♀; “*Acanthops sinuata* / Stoll. Kirb. Charp. / Tab. 29 / Brasil”; ZIMG • 1 ♂, 3 ♀♀; ZIMG.

**Additional labels**

All specimens with white label “*Acanthops falcataria* / (Goeze, 1778) / det. R. Ehrmann, III. 1999”.

**Remarks**

Within the material assigned to this species, one note bears the inscription “*Ac. falcataria*, II 27298, Apr. 99 an ? Italien”, referring to the loaned type specimen of *Acanthops contorta* mentioned above (identical accession numbers). Additionally, Ehrmann (2002), suggested that the type specimen of *A. falcataria* may be deposited in Greifswald; however, this does not appear to be the case.

Genus *Acontista* Saussure, 1869

*Acontista* Saussure, 1869: 55, 62.

*Acontistes* Burmeister, 1838: 542 (non *Acontistes* Sundevall, 1836).

*Acontiothespis* Rehn, 1916: 258.

## Remarks

Saussure (1869: 55, 62) introduced the name *Acontista* in reference to the genus *Acontistes* Burmeister, 1838, which was preoccupied by *Acontistes* Sundevall, 1836 (Aves). Subsequently, Rehn (1916) proposed *Acontiothespis* Rehn, 1916 as a replacement name, assuming that *Acontista* was merely an unjustified gender correction and therefore not a valid replacement. Roy (2004a), however, re-evaluated the status of *Acontista* and concluded that the introduction of *Acontiothespis* was unnecessary, considering it to be a junior synonym of *Acontista*. Roy (2004a) argued that Saussure's use of *Acontista* in his early works (1869, 1870, 1871a, 1871c, 1872) lacked an explicit statement of intent to introduce a replacement name and therefore did not constitute a demonstrably intentional change under Article 33.2 (regulation of Emendations) of the ICZN (1999). He identified Saussure & Zehntner (1894: 130) as the first authors to explicitly state that *Acontista* was proposed as a replacement name for the preoccupied *Acontistes* Burmeister, 1838, and accordingly attributed authorship of *Acontista* to them. This interpretation has been followed by subsequent authors, including Schwarz *et al.* (2020).

However, Saussure (1869) introduced the name *Acontista* in explicit reference to *Acontistes* Burmeister, 1838, as evidenced by his consistent use of the combination “*Acontista* Burm.” The name first appears in an identification key (p. 55), followed by repeated usage on p. 62 (“Genus *Acontista*, Burm.”), where Saussure cited its type species “*A. concinna*, Perty – Serv. Orth. 201, 36 – (*M. tricolor*, Burm. Handb. III, 543.)”, and described *A. cordillerae*. On the following page (p. 63), he described *A. elegans*. These actions demonstrate unequivocally that *Acontista* was intentionally applied to the same taxonomic concept as *Acontistes* Burmeister, 1838.

The introduction of *Acontista* does not constitute a justified emendation of *Acontistes* Burmeister, 1838 under Articles 33.2 and 32.5, as no explanation or justification for an emendation was provided, and the change consists solely of an altered generic ending (Roy 2004a). Under Article 33 (regulation of Subsequent spellings), such a change does not qualify as a justified emendation. Nevertheless, *Acontista* Saussure, 1869 fulfills all criteria of availability listed in Article 11 of the ICZN: it was published with an explicit bibliographic reference, used in a binominal context, and associated with included nominal species that objectively define the name. Accordingly, *Acontista* Saussure, 1869 is an available genus-group name with its own authorship and date. Although not a justified emendation, it qualifies as an available new name under Articles 33.2 and 19.1, resulting in a distinct authorship and date.

At the time of its introduction, *Acontista* Saussure, 1869 was then a junior objective synonym of *Acontistes* Burmeister, 1838, as both names refer to the same taxonomic entity. However, once *Acontistes* Burmeister, 1838 was rejected as a junior homonym (Saussure & Zehntner 1894: 130), then Article 60.2 of the ICZN became applicable: when a rejected junior homonym has available synonyms, the oldest of these becomes the valid name. As *Acontista* Saussure, 1869 is the oldest available synonym introduced for *Acontistes* Burmeister, 1838, it should be adopted as the valid replacement name. Subsequent attributions of authorship to Saussure & Zehntner (1894) are therefore inaccurate, as *Acontista* was already made available by Saussure in 1869. We therefore conclude that *Acontista* Saussure, 1869 is the valid and available replacement name. It fulfills the requirements of Article 12.1 (regulating the availability of names published before 1931), and also complies with the requirements of Articles 11 and 12.2.5 regarding availability and inclusion of nominal species.

*Acontista amoenula* Gerstaecker, 1889

Fig. 3

*Acontista amoenula* Gerstaecker, 1889: 51–52.

## Type material

### Holotype

PERU • ♀ (Fig. 3); green label “Lfd.N: 4 / *Acontista amoenula* / Pebas (Amazonas) / IV 5, 3, (2)” // four white labels “*semirufa* / Weltw. Tab. IX / fig. 2.” // “FIGURED / Rehn 1955” // “*Acontista amoenula* / Gerstaecker, 1889 female / det. R. Ehrmann, III. 1999” // “Zool. Mus. / Greifswald / II 27299” // red label “female HOLOTYPE / *Acontista amoenula* / Gerstaecker, 1889 / det. T. Mainda 2024”; ZIMG, ZIMG-II-27299.

### Additional labels

Green species label “*amoenula* Gerst.\* / Pebas Hahnel”.

### Type locality

Peru, Pebas (Hahnel leg.).

### Current status

Valid species.

### Remarks

As Gerstaecker (1889) referred to a single female specimen from “Patria: Pebas (Amazonas)”, it is considered the holotype by monotypy.



**Fig. 3.** *Acontista amoenula* Gerstaecker, 1889, holotype, ♀ (ZIMG-II-27299), habitus and labels. Metric scale showing a 1 cm black bar for reference.

*Acontista brevipennis* Saussure, 1872

*Acontista brevipennis* Saussure, 1872: 21.

**Material examined** (1 juv. male)

BOLIVIA • 1 juv. ♂; two labels “Chiquitos / Bolivia Stdgr.” // “Acontista brevipennis / Saussure, 1872 / det. R. Ehrmann, III. 1999”; ZIMG.

*Acontista concinna* (Perty, 1832)

*Mantis concinna* Perty, 1832: 117.

**Material examined** (1 male, 2 females)

BRAZIL • 1 ♀; two green labels “Bahia / Brasilia / Fruhstorfer” // “concinna / Perty / Charp. / male quadrimaculata Serv. / Fonteboa / Hahnel”; ZIMG • 1 ♂, 1 ♀; ZIMG.

**Additional labels**

All specimens with white label “Acontista concinna / (Perty, 1832) / det. R. Ehrmann, III. 1999”.

*Acontista* sp

**Material examined** (1 juv. female)

PERU • 1 juv. ♀; two white labels “Jurimaguas / Peru / Stdgr.” // “Acontista spec. / det. R. Ehrmann, III. 1999”; ZIMG.

Family Hymenopodidae Giglio-Tos, 1915  
Genus *Acromantis* Saussure, 1870

*Acromantis* Saussure, 1870: 226, 229.

*Acromantis gestri* Giglio-Tos, 1915

*Acromantis gestri* Giglio-Tos, 1915a: 7–8.

**Material examined** (2 males, 4 females)

INDONESIA (?) • 2 ♂♂, 4 ♀♀; white label “Acromantis gestri / Giglio-Tos, 1915 / det. R. Ehrmann, III. 1999”; ZIMG.

**Remarks**

According to the notes made by R. Ehrmann during his visit to the ZIMG in 1999, these specimens were collected in Sumatra, Indonesia.

*Acromantis oligoneura* (De Haan, 1842)

*Mantis oligoneura* De Haan, 1842: 90–91.

**Material examined** (2 males, 1 female)

INDONESIA • 1 ♂; “Java orient. / Fruhstorfer” // “*oligoneura* / DeH. Pl. 18, fig. 6 / mas. fem.”; ZIMG • 1 ♀; “*Mant. oligoneura* De Haan / female. pl. 18, fig. 6 / Sumatr. Stdgr.”; ZIMG • 1 ♂; ZIMG.

**Additional labels**

All specimens with white label “Acromantis oligoneura / (De Haan, 1842) / det. R. Ehrmann, III. 1999”.

Family Gonypetidae Westwood, 1889  
Genus *Amantis* Giglio-Tos, 1915

*Amantis* Giglio-Tos, 1915c: 151.

*Amantis biroi* Giglio-Tos, 1915

*Amantis biroi* Giglio-Tos, 1915c: 153.

**Material examined** (7 males, 1 female)

INDONESIA • 1 ♀; “Female Palabuan / W. Java / Fruhst.”; ZIMG • 7 ♂♂; ZIMG.

**Additional labels**

All specimens “Amantis biroi / Giglio-Tos, 1915 / det. R. Ehrmann, III. 1999”.

*Amantis reticulata* (De Haan, 1842)

*Mantis (Oxypilus) reticulata* De Haan, 1842: 87.

**Material examined** (1 male, 1 female)

INDONESIA • 1 ♀; “Female Palabuan / W. Java / Fruhst.” // “*reticulata* DeHaan? Pl. 17, fig. 9 / Java or mer. Fruhst.”; ZIMG • 1 ♂; yellow label “*reticulata* / DeHaan, pl. 17, fig. 9 / Sumatra Fruhst.”; ZIMG.

**Additional labels**

Both specimens “Amantis reticulata / (De Haan, 1842) / det. R. Ehrmann, III. 1999”; ZIMG.

Family Amelidae Westwood, 1889  
Genus *Ameles* Burmeister, 1838

*Ameles* Burmeister, 1838: 531.

*Ameles assoi* (Bolivar, 1873)

*Mantis assoi* Bolivar, 1873: 216–218.

**Material examined** (3 males, 1 female)

SPAIN • 1 ♀; yellow dot label // “Assoi Boliv.\* / Madrid Boliv.” // “ZIMG-II- / 28838”; ZIMG, ZIMG-II-28838 • 1 ♂; “ZIMG-II- / 28839”; ZIMG, ZIMG-II-28839 • 2 ♂♂; ZIMG.

**Additional labels**

All specimens “Ameles assoi / (Bolivar, 1873) / det. R. Ehrmann, III. 1999”.

**Remarks**

The yellow dot label placed near the only female specimen of this species in the ZIMG collection, along with the asterisk on the species label following the author’s name, suggests that these specimens were suspected to have paratype status. However, the original species description is based on a single female holotype from Madrid, collected by D.R. de Rementería (Bolivar 1873: 216). According to

Ehrmann (2002), this holotype is deposited in the Museo Nacional de Ciencias Naturales, Madrid, Spain. Therefore, the specimens housed in the ZIMG insect collection do not constitute type material.

*Ameles decolor* (Charpentier, 1825)

*Mantis decolor* Charpentier, 1825: 90–91.

**Material examined** (5 juvs)

UNKNOWN LOCALITY • 5 juvs; white label “Ameles decolor / (Charpentier, 1825) / det. R. Ehrmann, III. 1999”; ZIMG.

Family Mantidae Latreille, 1802  
Genus *Asiadodis* Roy, 2004

*Asiadodis* Roy, 2004b: 118.

*Asiadodis squilla* (Saussure, 1869)

*Choeradodis squilla* Saussure, 1869: 72.

**Material examined** (1 female)

SRI LANKA • 1 ♀; three white labels “Süd Ceylon / Mai 1889 / H.Fruhstorfer” // “Chaer. Squilla / Sauss. Female / Mant. pl. 4, fig. 3” // “Choeradodis squilla / Saussure, 1869 / det. R. Ehrmann, III. 1999”; ZIMG.

Family Gonypetidae Westwood, 1889  
Genus *Armene* Stål, 1877

*Armene* Stål, 1877: 49.

*Armene pusilla pusilla* (Eversmann, 1859)

*Mantis pusilla* Eversmann, 1859: 124–125.

**Material examined** (1 female)

UZBEKISTAN • 1 ♀; yellow label “alata Sauss. / Taschkend Dohrn” // white label “Armene pusilla pusilla / (Eversmann, 1859) / det. R. Ehrmann, III. 1999”; ZIMG.

Family Empusidae Burmeister, 1838  
Genus *Blepharopsis* Rehn, 1902

*Blepharopsis* Rehn, 1902: 316.

*Blepharopsis mendica mendica* (Fabricius, 1775)

*Mantis mendica* Fabricius, 1775: 275.

**Material examined** (1 female)

LEBANON • 1 ♀; yellow label “mendica Fabr. Latr. / marmorata Oliv. / Beirut Ribbe” // white label “Blepharopsis m. mendica / (Fabricius, 1775) / det. R. Ehrmann, III. 1999”; ZIMG.

Family Coptopterygidae Giglio-Tos, 1915  
Genus *Brunneria* Saussure, 1869

*Brunneria* Saussure, 1869: 58, 71.

*Brunneria borealis* Scudder, 1896

*Brunneria borealis* Scudder, 1896: 212.

**Material examined** (1 male)

USA • 1 ♂; green label “Texas Dohrn” // white label “*Brunneria borealis* / Scudder, 1896 / male, det. R. Ehrmann, III. 1999”; ZIMG.

*Brunneria longa* Giglio-Tos, 1915

*Brunneria longa* Giglio-Tos, 1915b: 69–70.

**Material examined** (1 male)

BOLIVIA • 1 ♂; two white labels “Chiquitos / Bolivia / Stdgr.” // “*Amantis biroi* / Giglio-Tos, 1915 male / det. R. Ehrmann, III. 1999”; ZIMG.

Family Acanthopidae Burmeister, 1838  
Genus *Callibia* Stål, 1877

*Callibia* Stål, 1877: 85.

*Callibia diana* (Stoll, 1813)

*Mantis diana* Stoll, 1813: 74.

**Material examined** (1 female)

BRAZIL • 1 ♀; two green labels “Obydos / Stdgr.” // “Diana Gerst.\* / Mant. Diana Stoll / Harpax pictipennis Serv. / Ega Stdgr.” // three white labels “*Callibia diana* / (Stoll, 1813) / det. R. Ehrmann, III. 1999” // “ZIMG-II- / 28840” // “No Type! Staudinger material! / T. Mainda 2024”; ZIMG, ZIMG-II-28840.

**Remarks**

According to Ehrmann (2002), the female holotype specimen is deposited in the Museum für Naturkunde, Berlin (MfN). He regarded the female specimen from the ZIMG collection as a questionable type. The type locality of the species is recorded as “Brasilien: Ega” (now Tefé, Amazonas Province, Brazil). The ZIMG specimen bears two primary labels, one indicating a collecting locality “Obydos” (i.e., Óbidos, Pará Province, Brazil), and a second label providing additional species information, including the locus typicus (“Ega”) and an asterisk following “Diana Gerst.” Evidently, Gerstaecker is not the author of this species, and the specimen belongs to the so-called “Staudinger material” (“Stdgr.”), attributed to the prominent German entomologist and insect trader Otto Staudinger (1830–1900). This indicates that the specimen was collected several years after the original species description and is therefore highly unlikely to represent a type. Given the discrepancy in collecting localities and the presence of an asterisk on one of the labels, if this specimen has indeed been collected in Ega, Gerstaecker might have used this specimen as the basis for establishing the new genus *Anastira* Gerstaecker 1883 (see Gerstaecker 1883: 97).

Family Hymenopodidae Giglio-Tos, 1915  
Genus *Ceratocrania* Westwood, 1889

*Ceratocrania* Westwood, 1889: 46.

*Ceratocrania macra* Westwood, 1889

*Ceratocrania macra* Westwood, 1889: 46.

**Material examined** (3 females)

UNKNOWN LOCALITY • 1 ♀; “Phyllothelys macra Dohrn\* / *Ceratocrania macra* Westw.”; ZIMG  
• 2 ♀♀; ZIMG.

**Additional labels**

All specimens with white label “*Ceratocrania macra* / Westwood, 1889 / det. R. Ehrmann, III. 1999”.

Genus *Chloroharpax* Werner, 1908

*Chloroharpax* Werner, 1908: 43–44.

*Chloroharpax modesta* (Gerstaecker, 1883)

Fig. 4

*Gonypeta modesta* Gerstaecker, 1883: 82–83.

**Type material** of *Gonypeta modesta* Gerstaecker, 1883

**Holotype**

CAMEROON (?) • ♂ (Fig. 4); two white labels “Zool. Mus. / Greifswald / II 27312” // “*Chloroharpax modesta* / (Gerstaecker, 1883) male / det. R. Ehrmann, III. 1999” // red label “male HOLOTYPE / *Gonypeta modesta* / Gerstaecker, 1883 / (original combination) / det. T. Mainda 2024”; ZIMG, ZIMG-II-27312.

**Other material examined** (1 male)

SIERRA LEONE • 1 ♂; blue label “Sierra Leone Preuss.” // white label “*Chloroharpax modesta* (Gerstaecker, 1883) male / det. R. Ehrmann, III. 1999”; ZIMG.

**Additional labels**

Blue species label “*modesta* Gerst.\* / Camaroon ? Buchh.”.

**Type locality**

Probably from Cameroon (Buchholz leg.).

**Remarks**

As Gerstaecker (1883) referred to a single male specimen, it is considered the holotype by monotypy.

Family Thespidae Saussure, 1869  
Genus *Chloromiopteryx* Giglio-Tos, 1915

*Chloromiopteryx* Giglio-Tos, 1915c: 141–142.

*Chloromiopteryx thalassina* (Burmeister, 1838)

*Mantis thalassina* Burmeister, 1838: 532.

**Material examined** (1 male)

BRAZIL • 1 ♂; green label “thalassina Burm. / Theresopolis Fruhst.” // white label “Chloromiopteryx thalassina / (Burmeister, 1838) / det. R. Ehrmann, III. 1999”; ZIMG.

Family Mantidae Latreille, 1802

Genus *Choeradodis* Audinet-Serville, 1831

*Choeradodis* Audinet-Serville, 1831: 50.

*Choeradodis rhombicollis* (Latreille, 1833)

*Mantis rhombicollis* Latreille, 1833: 103–104.

**Material examined** (1 female)

PANAMA • 1 ♀; green label “Servillei / Wood-Mason / Ann. Nat. hist. 5. Ser. / VI. P. 161 / Chiriqui Stdgr.” // white label “Choeradodis servillei / Wood-Mason, 1880 female / det. R. Ehrmann, III. 1999”; ZIMG.



**Fig. 4.** *Gonypeta modesta* Gerstaecker, 1883, holotype, ♂, (ZIMG-II-27312), habitus and labels. Metric scale showing a 1 cm black bar for reference.

Family Hymenopodidae Giglio-Tos, 1915  
Genus *Chrysomantis* Giglio-Tos, 1915

*Chrysomantis* Giglio-Tos, 1915b: 103.

*Chrysomantis speciosa* Giglio-Tos, 1915

*Chrysomantis speciosa* Giglio-Tos, 1915b: 103.

#### Remarks

Ehrmann (2002) reported that, in addition to the male holotype deposited in the British Museum in London, two male and two female type specimens were supposedly deposited in Greifswald. However, these four specimens are most likely not type material, as *C. speciosa* was described by Giglio-Tos (1915b) based on a single male specimen, as indicated by his statement “Un solo maschio da Aburi nella Costa d’Oro (Imperial Bureau of Entomology di Londra).” [A single male from Aburi on the Gold Coast (Imperial Bureau of Entomology, London)]. Furthermore, no specimens of *C. speciosa* are currently housed in the ZIMG collection.

Family Nanomantidae Brunner de Wattenwyl, 1893  
Genus *Cliomantis* Giglio-Tos, 1913

*Cliomantis* Giglio-Tos, 1913: 11–12.

*Cliomantis cornuta* Giglio-Tos, 1913

*Cliomantis cornuta* Giglio-Tos, 1913: 12.

#### Material examined (1 male)

AUSTRALIA • 1 ♂; four white labels “Peak-Downs” // “5081” // “Lachares cuncatus Stål.” // “*Cliomantis cornuta* / Giglio-Tos, 1913 male / det. R. Ehrmann, III. 1999”; ZIMG.

Family Gonypetidae Westwood, 1889  
Genus *Compsomantis* Saussure, 1872

*Compsomantis* Saussure, 1872: 23.

*Compsomantis crassiceps* (De Haan, 1842)

*Mantis (Oxypilus) crassiceps* De Haan, 1842: 87.

#### Material examined (3 males, 2 females)

INDONESIA • 1 ♀; white label “crassiceps / De H. pl. 17 fig. 8. (fem.) / Fruhst. / male, female / Java occ.”; ZIMG • 3 ♂♂, 1 ♀; ZIMG.

#### Additional labels

All specimens with white label “*Compsomantis crassiceps* / De Haan, 1842 / det. R. Ehrmann, III. 1999”.

Family Hymenopodidae Giglio-Tos, 1915  
Genus *Creobroter* Audinet-Serville, 1839

*Harpax (Creobroter)* Audinet-Serville, 1839: 160–161.

*Creobroter pictipennis* Wood-Mason, 1878

*Creobroter pictipennis* Wood-Mason, 1878: 585–586.

**Material examined** (1 male, 2 females)

INDONESIA • 1 ♀; white label “Java occid. / Fruhst.”; ZIMG • 1 ♂, 1 ♀; ZIMG.

**Additional labels**

All specimens with white label “*Creobroter pictipennis* / Wood-Mason, 1878 / det. R. Ehrmann, III. 1999”.

*Creobroter urbanus* (Fabricius, 1775)

*Mantis urbanus* Fabricius, 1775: 278.

**Material examined** (2 males, 5 females)

UNKNOWN LOCALITY • 2 ♂♂, 5 ♀♀; white label “*Creobroter urbanus* (Fabricius, 1775) / det. R. Ehrmann, III. 1999”; ZIMG.

Family Deroplatyidae Westwood, 1889

Genus *Danuria* (*Danuria*) Stål, 1856

*Danuria* Stål, 1856: 169.

*Danuria* (*Danuria*) *buchholzi* Gerstaecker, 1883

Fig. 5

*Danuria buchholzi* Gerstaecker, 1883: 93–94.

**Type material**

**Holotype** (1 male)

GHANA • ♂ (Fig. 5); two white labels “Zool. Mus. / Greifswald / II 27300” // “*Danuria* (*Danuria*) *buchholzi* / Gerstaecker, 1883 male / det. R. Ehrmann, III. 1999” // red label “male HOLOTYPE / *Danuria buchholzi* / Gerstaecker, 1883 / det. T. Mainda 2024”; ZIMG, ZIMG-II-27300.

**Other material examined** (1 male)

SIERRA LEONE • 1 ♂; two white labels “Male, female / Freetown / Sierra Leone / Preuss.” // “*Danuria* (*Danuria*) *buchholzi* / Gerstaecker, 1883 male / det. R. Ehrmann, III. 1999”; ZIMG.

**Additional labels**

Blue species label “Buchholzi / Gerst.\* / Akkra Buchh.”.

**Type locality**

Ghana, Akkra (Buchholz leg.).

**Current status**

Valid species.

## Remarks

As Gerstaecker (1883) referred to a single male specimen from Akkra (August, Buchholz leg.), it is considered the holotype by monotypy.

Subgenus *Danuria* (*Danuriodes*) Giglio-Tos, 1907

*Danuriodes* Giglio-Tos, 1907: 15.

*Danuria* (*Danuriodes*) *barbozae* Bolivar, 1889

*Danuria barbozae* Bolivar, 1889: 85.

## Material examined (1 female)

UNKNOWN LOCALITY • 1 ♀; white label “*Danuria* (*Danuriodes*) *barbozae* / Bolivar, 1889 female / det. R. Ehrmann, III. 1999”; ZIMG.

Family Acanthopidae Burmeister, 1838

Genus *Decimiana* Uvarov, 1940

*Deciminia* Uvarov, 1940: 173.



**Fig. 5.** *Danuria buchholzi* Gerstaecker, 1883, holotype, ♂, (ZIMG-II-27300), habitus and labels. Metric scale showing a 1 cm black bar for reference.

*Decimiana bolivari* (Chopard, 1916)

*Acanthops bolivari* Chopard, 1916: 179–181.

**Material examined** (1 male)

BRAZIL • 1 ♂; green label “Bahia, Brasilia / Fruhstorfer” // white label “Acanthops bolivari / Chopard, 1926 male / det. R. Ehrmann, III. 1999”; ZIMG.

Family Deroplatyidae Westwood, 1889

Genus *Deroplatys* Westwood, 1839

*Deroplatys* Westwood, 1839: 430.

*Deroplatys angustata* Westwood, 1841

*Deroplatys angustata* Westwood, 1841: 34.

**Material examined** (1 male)

BORNEO • 1 ♂; two yellow labels “N. Borneo / Fruhst.” // “mas? / angustata Westw. / Arcan.pl.9,fig.2 / Sumatra L.Mayer” // white label “Deroplatys angustata / Westwood, 1841 male / det. R. Ehrmann, III. 1999”; ZIMG.

*Deroplatys desiccata* Westwood, 1839

*Deroplatys angustata* Westwood, 1839: 430.

**Material examined** (4 males, 3 females)

BORNEO • 1 ♀; two yellow labels “female Borneo / Stdgr.” // “desiccata / Westw. / palliata De Haan / pl.16, fig. 1, 2. / Sumatra Fruhst.”; ZIMG • 1 ♂; white label “Nordborneo / Alverett / ex coll. Fruhstorfer”; ZIMG.

INDONESIA • 1 ♂; white label “Ostjava male”; ZIMG • 1 ♂; white label “male Java orient. / Fruhst.”; ZIMG.

UNKNOWN LOCALITY • 1 ♀; white label “palliata / De Haan female / pl. 16, fig. 2”; ZIMG • 1 ♂; “male arida Westw. / Arc. pl. 9, fig. 1”; ZIMG • 1 ♀; ZIMG.

**Additional labels**

All specimens with white label “Deroplatys desiccata / Westwood, 1839 / det. R. Ehrmann, III. 1999”.

*Deroplatys lobata* (Guérin-Méneville, 1838)

*Choeradodis lobata* Guérin-Méneville, 1838: 69–70.

**Material examined** (1 female, 1 male)

INDONESIA • 1 ♀; yellow label “lobata Guér. / Mag. d. Zool. pl. 234 / rhombica De Haan / pl. 17 fig. 1 / Java Dohrn”; ZIMG • 1 ♂; white label “Java occid. / Fruhst.”; ZIMG.

**Additional labels**

Both specimens with white label “*Deroplatys lobata* / (Guérin-Méneville, 1838) / det. R. Ehrmann, III. 1999”.

*Deroplatys truncata* (Guérin-Méneville, 1843)

*Choeradodis truncata* Guérin-Méneville, 1843: 65.

**Material examined** (1 male)

UNKNOWN LOCALITY • 1 ♂; white label “*Deroplatys truncata* / (Guérin-Méneville, 1843) / det. R. Ehrmann, III. 1999”; ZIMG.

Family Eremiaphilidae Saussure, 1869  
Genus *Didymocorypha* Wood-Mason, 1877

*Didymocorypha* Wood-Mason, 1877: 221–222.

*Didymocorypha lanceolata* (Fabricius, 1798)

*Mantis lanceolata* Fabricius, 1798: 191.

**Material examined** (1 male)

SRI LANKA • 1 ♂; yellow label “*gracilipes* / Stål. / *ensifera* / Wood-Mas. / Ceylon Nietn.” // white label “*Didymocorypha lanceolata* / (Fabricius, 1798) / det. R. Ehrmann, III. 1999”; ZIMG.

Family Empusidae Burmeister, 1838  
Genus *Empusa* (*Empusa*) Illiger, 1798

*Empusa* Illiger, 1798: 499.

*Empusa* (*Empusa*) *pennata* (Thunberg, 1815)

*Gongylus pennata* Thunberg, 1815: 294.

**Material examined** (8 males, 2 females, 3 juv. specimens)

ITALY • 1 ♂; white label “Sardinia / male Heyne”; ZIMG.

SPAIN • 1 ♀; white label “*egena* / Charp. / *pauperata* / Illig. Burm. / Madrid Bolivar”; ZIMG.

UNKNOWN LOCALITY • 7 ♂♂, 1 ♀, 3 juvs; ZIMG.

**Additional labels**

All specimens with white label “*Empusa* (*Empusa*) *pennata* / (Thunberg, 1815) / det. R. Ehrmann, III. 1999”.

*Empusa* (*Empusa*) *pennicornis pennicornis* (Pallas, 1773)

*Mantis pennicornis* Pallas, 1773: 728.

**Material examined** (2 females)

LEBANON • 1 ♀; yellow label “*pennicornis* / Pall. / *orientalis* / Burm. / Beirut Ribbe”; ZIMG • 1 ♀; ZIMG.

**Additional labels**

Both specimens with white label “Empusa (Empusa) p. pennicornis / (Pallas, 1773) female / det. R. Ehrmann, III. 1999”.

Family Nanomantidae Brunner de Wattenwyl, 1893  
Genus *Eomantis* Giglio-Tos, 1915

*Eomantis* Giglio-Tos, 1915b: 47.

*Eomantis iridipennis* (Westwood, 1889)

*Miopteryx iridipennis* Westwood, 1889: 38.

**Material examined** (2 females)

INDONESIA • 1 ♀; brownish label “Java or. / Fruhst.”; ZIMG • 1 ♀; ZIMG.

**Additional labels**

Both with white label “Tropidomantis (Eomantis) female / iridipennis (WESTW., 1889) / det. R. Ehrmann, III.1999”.

Family Mantidae Latreille, 1802  
Genus *Epitenodera* Giglio-Tos, 1912

*Epitenodera* Giglio-Tos, 1912: 33.

*Epitenodera herbacea* (Audinet-Serville, 1839)

*Mantis herbacea* Audinet-Serville, 1839: 177–178.

**Material examined** (3 females)

GABON • 1 ♀; blue label “Ogove Buchh.”; ZIMG, ZIMG-II-28841.

GHANA • 1 ♀; blue label “herbacea / Sauss. Gerst.\* / Mant. Herbacea / Serv. / Akkra Buchh.”; ZIMG, ZIMG-II-28842.

UNKNOWN LOCALITY • 1 ♀; ZIMG.

**Additional labels**

All with white label “Epitenodera herbacea / (Serville, 1839) female / det. R. Ehrmann, III. 1999”.

Family Eremiaphilidae Saussure, 1869  
Genus *Eremiaphila* Lefebvre, 1835

*Eremiaphila* Lefebvre, 1835: 468–481.

*Eremiaphila genei* Lefebvre, 1835

*Eremiaphila gene* Lefebvre, 1835: 486–489.

**Material examined** (1 female)

SYRIA • 1 ♀; two white labels “Hauensteini / Aleppo / Brunn” // “Eremiaphila genei / Lefebvre, 1835 / det. R. Ehrmann, III. 1999”; ZIMG.

**Remarks**

According to Ehrmann (2011), the correct original spelling of the species epithet is “gene”.

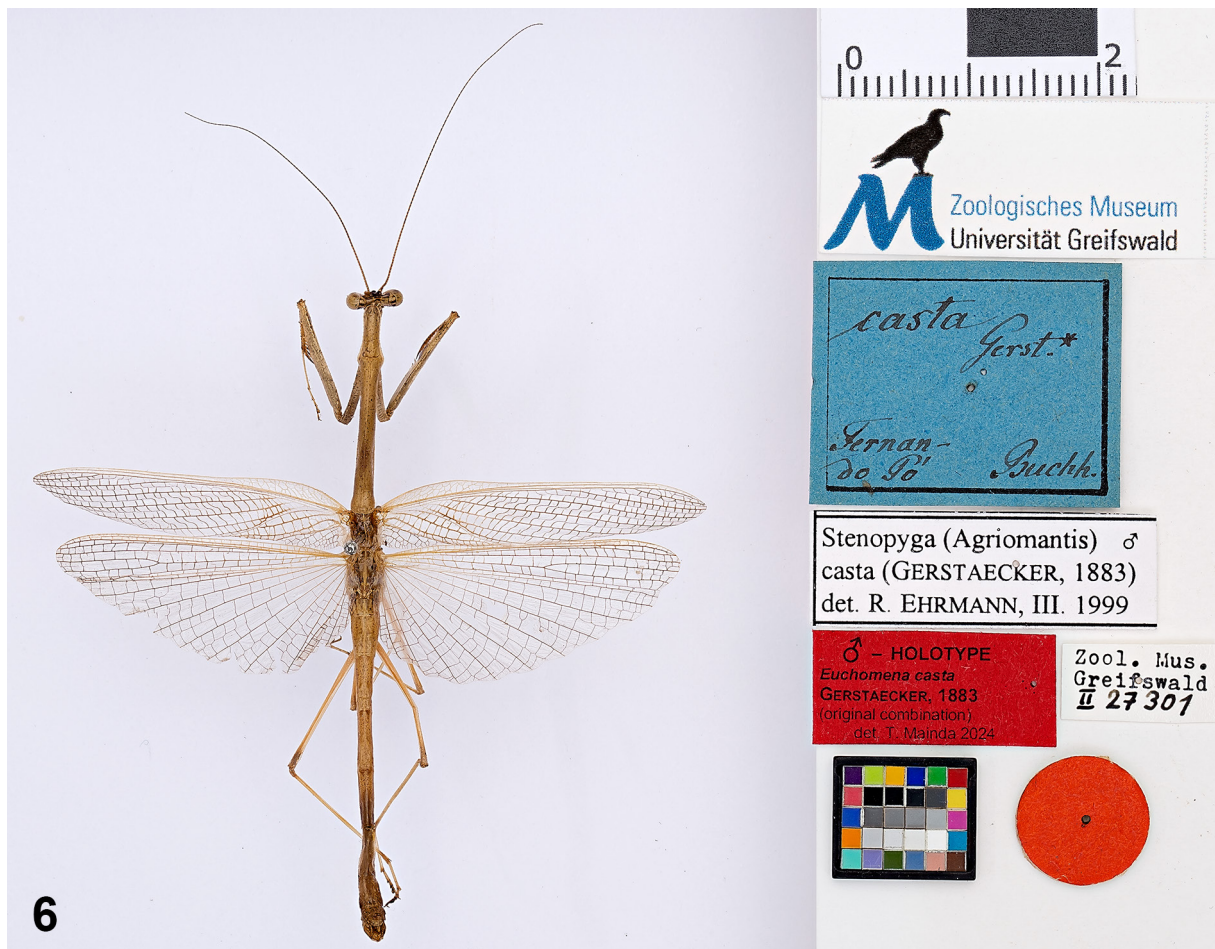
Family Deroplatyidae Westwood, 1889  
Genus *Euchomena* Saussure, 1870

*Euchomena* Saussure, 1870: 234, 235.

*Euchomena casta* Gerstaecker, 1883  
Fig. 6

**Type material**

See *Stenopyga (Agriomantis) casta* (Gerstaecker, 1883).



**Fig. 6.** *Euchomena casta* Gerstaecker, 1883, holotype, ♂, (ZIMG-II-27301), habitus and labels. Metric scale showing a 1 cm black bar for reference.

Genus *Euchomenella* Giglio-Tos, 1916

*Euchomenella* Giglio-Tos, 1916: 35–36.

*Euchomenella heteroptera* (De Haan, 1842)

*Mantis* (*Mantis*) *heteroptera* De Haan, 1842: 78.

**Material examined** (3 males)

BORNEO • 1 ♂; yellow label “heteroptera / De Haan / pl.18, fig.1 / Borneo Stdgr.”; ZIMG • 1 ♂; brownish label “Borneo / Stdgr. Male”; ZIMG • 1 ♂; ZIMG.

**Additional labels**

All with white label “*Euchomenella heteroptera* / (De Haan, 1842) male / det. R. Ehrmann, III. 1999”.

*Euchomenella moluccarum* (Saussure, 1872)

*Euchomena moluccarum* Saussure, 1872: 27–28.

**Material examined** (3 males, 3 females)

INDONESIA • 1 ♂; brownish label “male female Palabuan / S.W. Java / Fruhst.”; ZIMG • 1 ♀; brownish label “spec. female Java / or. mer. Fruhst.”; ZIMG • 2 ♂♂, 2 ♀♀; ZIMG.

**Additional labels**

All with white label “*Euchomenella moluccarum* / (Saussure, 1872) / det. R. Ehrmann, III. 1999”.

Family Liturgusidae Giglio-Tos, 1915

Genus *Fuga* Svenson, 2014

*Fuga* Svenson, 2014: 151–153.

*Fuga annulipes* (Audinet-Serville, 1839)

Figs 7–8

*Mantis annulipes* Audinet-Serville, 1839: 199.

**Type material** of *Mantis annulipes* Audinet-Serville, 1839 (2 females)

**Lectotype**

BRAZIL • ♀ (Fig. 7); green label “Bahia, Brasilien / Fruhstorfer” // reddish label “Gen. Liturgousa / Sp. annulipes / Ref. (Serville, 1839) / ? PARATYPE ? female / EMAU” // white label “ZIMG-II- / 28844” // red label “female LECTOTYPE / *Fuga annulipes* / (Audinet-Serville, 1839) / acc. to Svenson (2014) / det. T. Mainda 2024”; ZIMG, ZIMG-II-28844.

**Paralectotype**

BRAZIL • 1 ♀ (Fig. 8); brownish label “a. Mant. annuli- / pede Charn. tl. / 28 Differt cotta alarum fusca” // reddish label “Gen. Liturgousa / Sp. annulipes / Ref. (Serville, 1839) / ? PARATYPE ? female / EMAU” // white label “ZIMG-II- / 28845” // red label “female PARALECTOTYPE / *Fuga annulipes* / (Audinet-Serville, 1839) / acc. to Svenson (2014) / det. T. Mainda 2024”; ZIMG, ZIMG-II-28845.



**Fig. 7.** *Mantis annulipes* Audinet-Serville, 1839, lectotype, ♀, (ZIMG-II-28844), habitus and labels. Metric scale showing a 1 cm black bar for reference.



**Fig. 8.** *Mantis annulipes* Audinet-Serville, 1839, paralectotype, ♀, (ZIMG-II-28845), habitus and labels. Metric scale showing a 1 cm black bar for reference.

**Type locality**

Lectotype from Brazil, Bahia (Fruhstorfer leg.); paralectotype without locality.

**Remarks**

Lectotype and paralectotype designated, and species redescribed, by Svenson (2014: 155–162).

Family Eremiaphilidae Saussure, 1869  
Genus *Galepsus* (*Lygdamia*) Stål, 1877

*Lygdamia* Stål, 1877: 14.

*Galepsus* (*Lygdamia*) *oxycephalus* (Gerstaecker, 1883)  
Fig. 9

*Tarachodes oxycephala* Gerstaecker, 1883: 77–79.

**Type material** of *Tarachodes oxycephala* Gerstaecker, 1883

**Holotype**

GABON • ♂ (Fig. 9); two white labels “Zool. Mus. / Greifswald / II 27308” // “*Galepsus* (*Lygdamia*) *oxycephalus* (Gerst., 1883) male / det. R. Ehrmann, III. 1999” // red label “male HOLOTYPE / *Tarachodes oxycephalus* / Gerstaecker, 1883 / (original combination) / det. T. Mainda 2024”; ZIMG, ZIMG-II-27308.



**Fig. 9.** *Tarachodes oxycephala* Gerstaecker, 1883, holotype, ♂, (ZIMG-II-27308), habitus and labels. Metric scale showing a 1 cm black bar for reference.

**Additional labels**

Blue species label “oxycephala / Gerst.\* / Ogowe Buchh.”.

**Type locality**

Gabon, Ogooué (“Ogowé”) (Buchholz leg.).

**Remarks**

As Gerstaecker (1883) referred to a single male specimen, it is considered the holotype by monotypy.

Family Galinthiidae Giglio-Tos, 1919  
Genus *Galinthias* Stål, 1877

*Galinthias* Stål, 1877: 86.

*Galinthias amoena* (Saussure, 1871)

*Harpax (Pseudoharpax) amoena* Saussure, 1871b: 318–319.

*Harpax (Pseudoharpax) amoena* Saussure, 1871d: 442–443.

**Material examined** (1 male, 2 females)

TANZANIA • 1 ♀; blue label “amoena / Sauss. / Sansibar Hildebr.” // brownish label “Galinthias / amoena Sauss. / female Westw. pl. X. fig. 10.”; ZIMG • 1 ♀; blue label “Bagamo / jo / Fischer.”; ZIMG • 1 ♂; ZIMG.

**Additional labels**

All with white label “*Galinthias amoena* / (Saussure, 1871) / det. R. Ehrmann, III. 1999”.

Family Rivetinidae Ehrmann & Roy, 2002  
Genus *Geomantis* Pantel, 1896

*Geomantis* Pantel, 1896: 63–67.

*Geomantis larvoides* Pantel, 1896

*Geomantis larvoides* Pantel, 1896: 67–70.

**Material examined** (1 female)

UNKNOWN LOCALITY • 1 ♀; white label “*Geomantis l. larvoides* / Pantel, 1896 female / det. R. Ehrmann, III. 1999”; ZIMG.

Family Epaphroditidae Brunner de Wattenwyl, 1893  
Genus *Gonatista* Saussure, 1869

*Gonatista* Saussure, 1869: 54, 61.

*Gonatista phryganoides* (Audinet-Serville, 1839)

*Mantis phryganoides* Audinet-Serville, 1839: 198.

**Material examined** (2 males)

CUBA • 1 ♂; green label “grisea / Fab. Sauss. / Orth. d. Mexiq. fig. 1.2. / male phryganoides Serv. / Cubensis Sauss. / Cuba Krchldf.”; ZIMG • 1 ♂; ZIMG.

**Additional labels**

Both specimens with white label “Gonatista phryganoides / (Serville, 1839) male / det. R. Ehrmann, III. 1999”.

Family Empusidae Burmeister, 1838  
Genus *Gongylus* Thunberg, 1815

*Gongylus* Thunberg, 1815: 215, 220.

*Gongylus gongylodes* (Linnaeus, 1758)

*Gryllus* (*Mantis*) *gongylodes* Linnaeus, 1758: 426.

**Material examined** (1 male, 1 female)

SRI LANKA • 1 ♂; brownish label “Gongylus Thbg. / gongylodes / Lin. Stoll. fig., 61 (male) / 58, 59 (female)”; ZIMG • 1 ♀; brownish label “Süd Ceylon / Mai 1889 / H.Fruhstorfer”; ZIMG.

**Additional labels**

Both with white label “Gongylus gongylodes (Linné, 1758) / det. R. Ehrmann, III. 1999”.

Family Gonypetidae Westwood, 1889  
Genus *Gonypeta* Saussure, 1869

*Gonypeta* Saussure, 1869: 55, 63.

*Gonypeta modesta* Gerstaecker, 1883  
Fig. 4

**Type material**

see *Chloroharpax modesta* (Gerstaecker, 1883).

*Gonypeta punctata* (De Haan, 1842)

*Mantis* (*Oxypilus*) *punctata* De Haan, 1842: 85.

**Material examined** (5 males, 1 female)

INDONESIA • 1 ♂; white label “punctata (?), /De H. pl. 17 / fg., 13. mas. Fruhst. / Java or. mer.”; ZIMG • 4 ♂♂, 1 ♀; ZIMG.

**Additional labels**

All with white label “Gonypeta punctata punctata / (De Haan, 1842) / det. R. Ehrmann, III. 1999”.

Family Nanomantidae Brunner de Wattenwyl, 1893  
Genus *Gyromantis* Giglio-Tos, 1913

*Gyromantis* Giglio-Tos, 1913: 7.

***Gyromantis* sp**

**Material examined** (1 male)

AUSTRALIA • 1 ♂; violet label “Kraussi / Sauss. / Peak-Downs / Mus. Godeffr.” // white label “*Gyromantis kraussii* / (Saussure, 1872) male / det. R. Ehrmann, III. 1999”; ZIMG.

Family Haaniidae Giglio-Tos, 1915  
Genus *Haania* Saussure, 1871

*Haania* Saussure, 1871a: 140, 159.

*Haania* Saussure 1871c: 307.

***Haania confusa* Saussure, 1871**

*Haania* (*Parairidopteryx*) *confusus* Saussure, 1871a: 159.

*Haania* (*Parairidopteryx*) *confusus* Saussure, 1871c: 307.

**Material examined** (1 male)

INDONESIA • 1 ♂; two white labels “Java occident. / Pengalengan / 4900 1893 / H.Fruhstorfer.” // “*Haania confusa* / Saussure, 1871 male / det. R. Ehrmann, III. 1999”; ZIMG.

Family Liturgusidae Giglio-Tos, 1915  
Genus *Hagiomantis* Saussure & Zehntner, 1894

*Hagiomantis* Saussure & Zehntner, 1894: 158.

***Hagiomantis superba* (Gerstaecker, 1889)**  
Fig. 10

*Liturgusa superba* Gerstaecker, 1889: 53–54.

**Type material**

**Holotype**

PERU • ♀ (Fig. 10); green label “Lfd.N: 47 / *Liturgusa superba* / Jurimaguas (Peru) / IV 5, 2, (1)” // three white labels “FIGURED / Rehn 1955” // “Zool. Mus. / Greifswald / II 27311” // “*Hagiomantis superba* / (Gerstaecker, 1889) female / det. R. Ehrmann, III. 1999” // red label “female HOLOTYPE / *Liturgusa superba* / Gerstaecker, 1889 / (original combination) / det. T. Mainda 2024”; ZIMG, ZIMG-II-27311.

**Additional labels**

Green species label “*superba* / Gerst.\* / ? ornata Stoll / fg. 69 / Jurimaguas Garlepp”.

**Type locality**

Peru, Yurimaguas, Loreto (“Jurimaguas”) (Garlepp leg.).

**Remarks**

As Gerstaecker (1889) referred to a single female specimen (“Patria: Jurimaguas (Perù)”), it is considered the holotype by monotypy.

Family Gonypetidae Westwood, 1889  
Genus *Hapalopezella* Giglio-Tos, 1915

*Hapalopezella* Giglio-Tos, 1915b: 43–44.

*Hapalopezella maculata* (Kirby, 1904)

*Hapalopeza maculata* Kirby, 1904: 84.

**Material examined** (1 male)

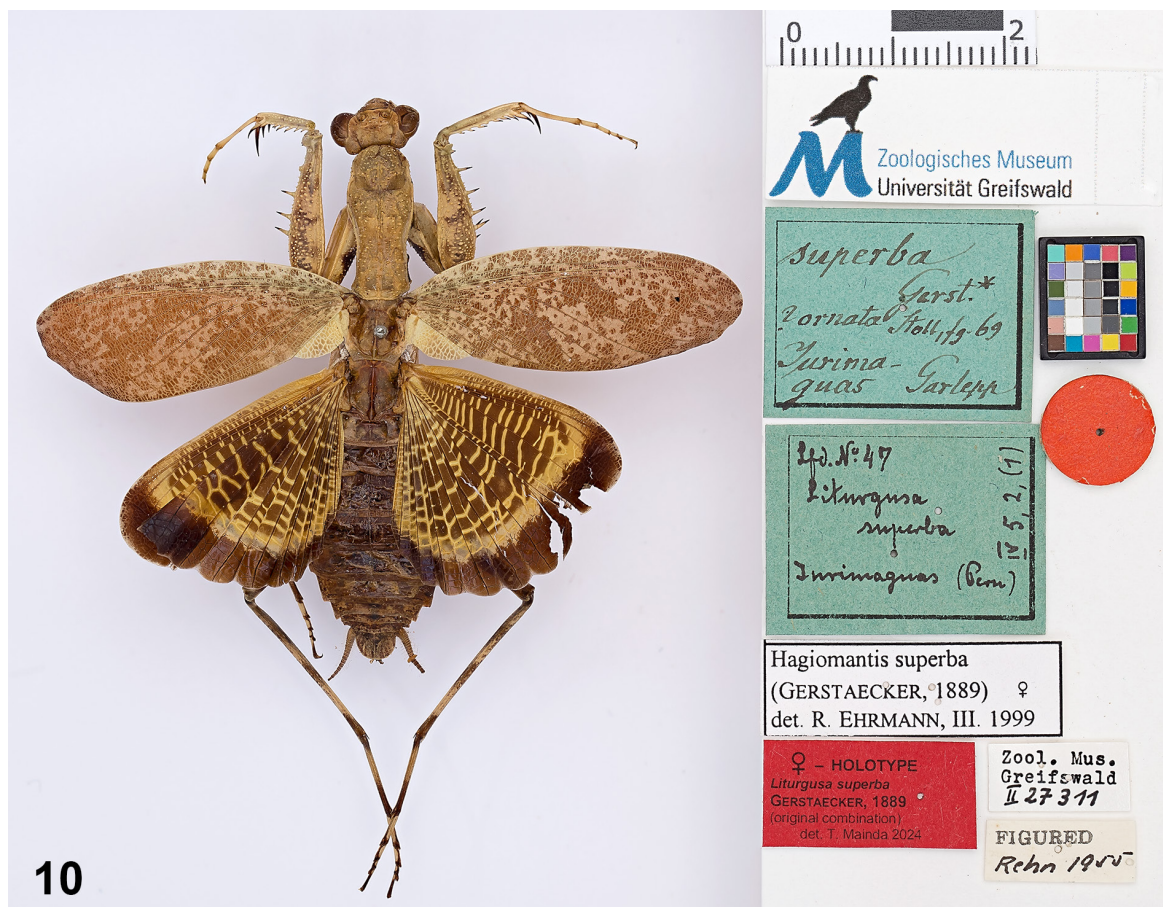
SRI LANKA • 1 ♂; two white labels “Nord Ceylon / Juni 1889 / H.Fruhstorfer” // “Hapalopezella maculata / (Kirby, 1904) male / det. R. Ehrmann, III. 1999”; ZIMG.

Family Galinthiidae Giglio-Tos, 1919  
Genus *Harpagomantis* Kirby, 1899

*Harpagomantis* Kirby, 1899: 345.

*Harpagomantis tricolor* (Linnaeus, 1758)

*Gryllus* (*Mantis*) *tricolor* Linnaeus, 1758: 426.



**Fig. 10.** *Liturgusa superba* Gerstaecker, 1889, holotype, ♀, (ZIMG-II-27311), habitus and labels. Metric scale showing a 1 cm black bar for reference.

**Material examined** (1 female)

MOZAMBIQUE • 1 ♀; two white labels “Harpa lobata / Fab. female / Delagoa” // “Harpagomantis tricolor / (Linné, 1758) female / det. R. Ehrmann, III. 1999”; ZIMG.

Family Toxoderidae Saussure, 1869  
Genus *Heterochaeta* Westwood, 1843

*Heterochaeta* Westwood, 1843: 162.

***Heterochaeta tenuipes*** (Westwood, 1841)

*Toxodera tenuipes* Westwood, 1841: 272.

**Material examined** (1 female, 1 juv.)

TANZANIA • 1 juv.; blue label “tenuipes / Westw. / Arc.ent.pl.41 / Bagamojo Fischer”; ZIMG • 1 ♀; ZIMG.

**Additional labels**

Both with white label “*Heterochaeta tenuipes* / (Westwood, 1841) / det. R. Ehrmann, III. 1999”.

Family Mantidae Latreille, 1802  
Genus *Hierodula* Burmeister, 1838

*Hierodula* Burmeister, 1838: 536.

***Hierodula laevicollis*** Saussure, 1871

*Hierodula laevicollis* Saussure, 1871a: 82.

*Hierodula laevicollis* Saussure, 1871c: 230.

**Material examined** (1 female)

INDONESIA • 1 ♀; yellow label without text // two white labels “3700 W<sup>3</sup> / Amboina Arndt.” // “*Hierodula laevicollis* / Saussure, 1871 female / det. R. Ehrmann, III. 1999”; ZIMG.

***Hierodula patellifera*** (Audinet-Serville, 1839)

*Mantis patellifera* Audinet-Serville, 1839: 185–186.

**Material examined** (1 male, 2 females)

INDONESIA • 1 ♀; white label “male female Java / orient. Fruhst.”; ZIMG.

MALAYSIA • 1 ♀; brownish label “Penang / August 1889 / H.Fruhstorfer”; ZIMG.

UNKNOWN LOCALITY • 1 ♂; ZIMG

**Additional labels**

All with white label “*Hierodula p. patellifera* / (Serville, 1839) / det. R. Ehrmann, III. 1999”.

***Hierodula tenuidentata tenuidentata*** Saussure, 1869

*Hierodula tenuidentata* Saussure, 1869: 68.

**Material examined** (1 female)

INDIA • 1 ♀; two white labels “Bengalen / Lamare Piquot.” // “Hierodula t. tenuidentata / Saussure, 1869 female / det. R. Ehrmann, III. 1999”; ZIMG.

***Hierodula unimaculata*** (Olivier, 1792)

*Mantis unimaculata* Olivier, 1792: 640–641.

**Material examined** (2 males, 1 female)

SRI LANKA • 1 ♂; brownish label “Nord Ceylon / Juni 1889 / H.Fruhstorfer”; ZIMG • 1 ♀; brownish label “Süd Ceylon / Mai 1889 / H.Fruhstorfer”; ZIMG • 1 ♂; ZIMG.

**Additional labels**

All with white label “Hierodula unimaculata / (Olivier, 1792) / det. R. Ehrmann, III. 1999”.

***Hierodula ventralis*** Giglio-Tos, 1912

*Hierodula ventralis* Giglio-Tos, 1912: 82–83.

**Material examined** (4 males, 1 female)

BORNEO • 1 ♂; white label “male Borneo / Stdgr.”; ZIMG.

INDIA • 1 ♀; yellow label “female Stdgr. / Bombay”; ZIMG.

INDONESIA • 1 ♂; white label “male Java orient. / Fruhstorf.”; ZIMG • 1 ♂; yellow label “Sumatra / Fruhst.”; ZIMG.

UNKNOWN LOCALITY • 1 ♂; ZIMG.

**Additional labels**

All with white label “Hierodula ventralis / Giglio-Tos, 1912 / det. R. Ehrmann, III. 1999”.

Family Gonypetidae Westwood, 1889

Genus ***Humbertiella*** Saussure, 1869

*Humbertiella* Saussure, 1869: 55, 61.

***Humbertiella ceylonica*** Saussure, 1869

*Humbertiella ceylonica* Saussure, 1869: 62.

**Material examined** (1 male, 1 female)

SRI LANKA • 1 ♀; brownish label “Nord Ceylon / Juni 1889 / H.Fruhstorfer”; ZIMG.

THAILAND • 1 ♂; yellow label “Ceylonica / Sauss. / Bangkok Dohrn”; ZIMG.

**Additional labels**

Both with white label “Humbertiella ceylonica / Saussure, 1869 / det. R. Ehrmann, III. 1999”.

***Humbertiella heterochroa*** Gerstaecker, 1883  
Figs 11–12

**Type material**

See *Theopompella heterochroa* (Gerstaecker, 1883).

***Humbertiella ocularis*** Saussure, 1872

*Humbertiella ocularis* Saussure, 1872: 16–17.

**Material examined** (1 male, 1 female)

INDONESIA • 1 ♂; yellow label “male Sumatra / Fruhst.”; ZIMG • 1 ♀; brownish label “Java occident. / Pengalengan / 4000’ 1893 / H.Fruhstorfer” // yellow label “disparilis / Westw. / Rev. Mant. pl. 13, fig. 3. / Java occid. Fruhst.”; ZIMG.

**Additional labels**

Both with white label “*Humbertiella ocularis* / Saussure, 1872 / det. R. Ehrmann, III. 1999”.

Family Hymenopodidae Giglio-Tos, 1915  
Genus *Hymenopus* Audinet-Serville, 1831

*Hymenopus* Audinet-Serville, 1831: 46.

***Hymenopus coronatus*** (Olivier, 1792)

*Mantis coronatus* Olivier, 1792: 638.

**Material examined** (2 females)

INDONESIA • 1 ♀; white label “Java orient. / mer. Fruhst.”; ZIMG.

SUNDA ISLANDS • 1 ♀; yellow label “bicornis / Sauss. / Mant. bicornis Stoll / coronata Oliv. Serv. / Sunda Ins. Dohrn”; ZIMG.

**Additional labels**

Both with white label “*Hymenopus coronatus* / (Olivier, 1792) female / det. R. Ehrmann, III. 1999”.

Family Empusidae Burmeister, 1838  
Genus *Idolomorpha* Burmeister, 1838

*Idolomorpha* Burmeister, 1838: 547.

***Idolomorpha lateralis*** Burmeister, 1838

*Empusa (Idolomorpha) lateralis* Burmeister, 1838: 547.

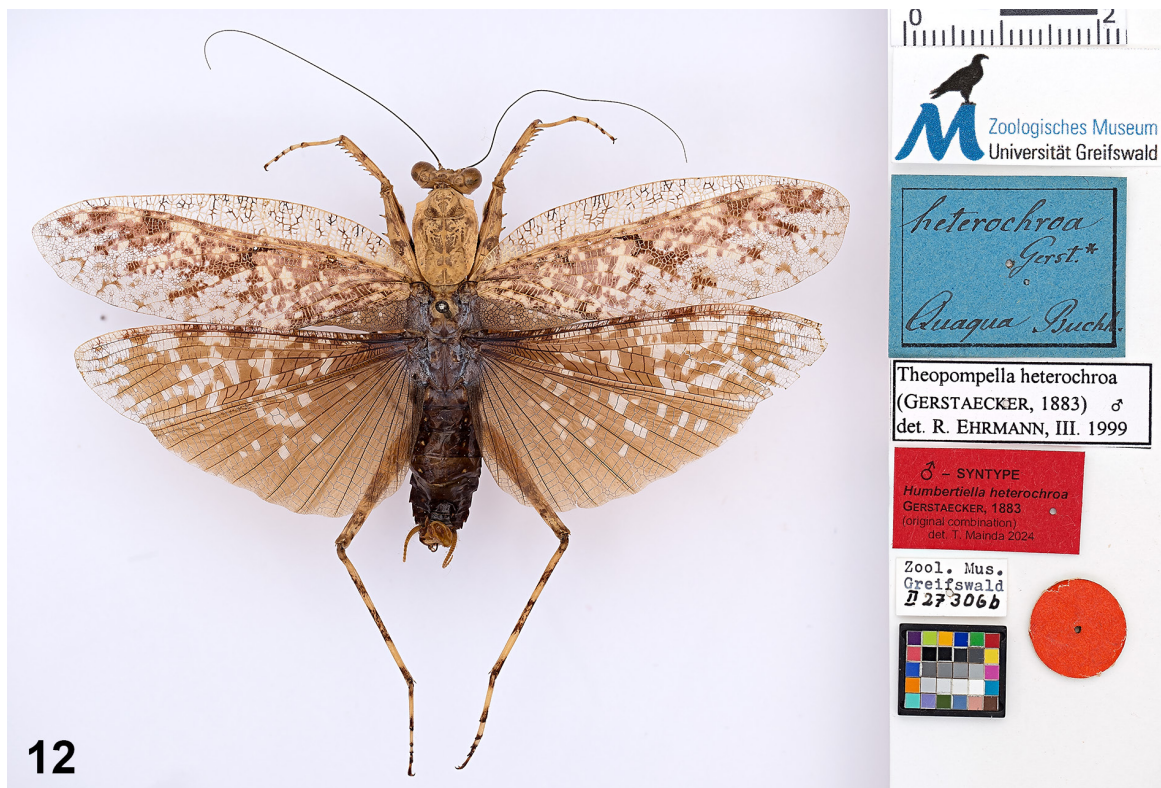
**Material examined** (1 male, 1 female)

GHANA • 1 ♂; blue label “lateralis / Burm. Gerst.\* / defoliata Serv. / Akkra Buchh.” // white label “ZIMG-II- / 28843”; ZIMG, ZIMG-II-28843.

SIERRA LEONE • 1 ♀; small blue label “female Sierra / Leone / Preuss.”; ZIMG.



**Fig. 11.** *Humbertiella heterochroa* Gerstaecker, 1883, syntype, ♂, (ZIMG-II-27306a), habitus and labels. Metric scale showing a 1 cm black bar for reference.



**Fig. 12.** *Humbertiella heterochroa* Gerstaecker, 1883, syntype, ♂, (ZIMG-II-27306b), habitus and labels. Metric scale showing a 1 cm black bar for reference.

### Additional labels

Both with two white labels “*Idolomorpha lateralis* / Burmeister, 1838 / det. R. Ehrmann, III. 1999” // “No Type! Collected by Paul Preuß / in 1886! / T. Mainda 2024”.

### Remarks

Burmeister (1838) described the species from “Sierra Leona” without specifying the number or sex of the specimens examined. According to Ehrmann (2002), a single female specimen is regarded as the type and is currently housed in the Museum für Naturkunde, Berlin (MfN). Ehrmann (2002) also noted a questionable type specimen in the ZIMG collection. The label “ZIMG...” beneath the male specimen in Greifswald suggests that this specimen was once considered the questionable type. However, Gerstaecker (1883: 97) reported a single male specimen from Akkra, which matches the ZIMG male specimen (see above). Therefore, this male specimen can be confidently excluded as a type. The female type in Berlin bears five old labels: a red “Type” label, a white label with “701,” two greenish handwritten labels reading “Sierr. Leon.” and “*lateralis*, Burm.\*”, and a white handwritten label “*Idolomorpha*, Sauss.” (Jaenicke in litt.). A second female specimen in the ZIMG collection, also labeled from Sierra Leone, has a single blue handwritten label (see above) but in a different handwriting (compared to the type female in Berlin). The abbreviation “Preuss.” most likely refers to the botanist Dr Paul Preuß (1861–1926), who collected insects in Africa (Deckert 1999). In 1886, Preuß participated in a botanical and entomological expedition to Sierra Leone. Thus, the ZIMG female specimen cannot be part of Burmeister’s original type series.

Family Eremiaphilidae Saussure, 1869  
Genus *Iris* Saussure, 1869

*Iris* Saussure, 1869: 56, 64.

*Iris oratoria* (Linnaeus, 1758)

*Gryllus* (*Mantis*) *oratorius* Linnaeus, 1758: 426.

### Material examined (6 males, 3 females)

SPAIN • 1 ♂; white label “*oratoria* / Lin. Burm. / *dentata* Goeze / *bella* Germ. / Escorial Boliv.”; ZIMG • 1 ♀; brownish label “*oratoria*, L.”; ZIMG • 5 ♂♂, 2 ♀♀; ZIMG.

### Additional labels

All with white label “*Iris oratoria* / (Linné, 1758) / det. R. Ehrmann, III. 1999”.

*Iris orientalis* Wood-Mason, 1882

*Iris orientalis* Wood-Mason, 1882: 32–33

### Material examined (1 female)

INDIA • 1 ♀; small round platelet at pin // yellow label “Kulu / Bengal. Stdgr” // two white labels “*Iris orientalis* / Wood-Mason (1882)” // “*Iris orientalis* / Wood-Mason, 1882 female / det. R. Ehrmann, III. 1999”; ZIMG.

Family Deroplatyidae Westwood, 1889  
Genus *Leptocola* Gerstaecker, 1883

*Leptocola* Gerstaecker, 1883: 91–92.

*Leptocola gracillima* Gerstaecker, 1883  
Figs 13–14

*Leptocola gracillima* Gerstaecker, 1883: 92–93.

**Type material**

**Syntypes** (2 females)

CAMEROON • 1 ♀ (Fig. 13); white label “Zool. Mus. / Greifswald / II 27305a”; ZIMG, ZIMG-II-27305a • 1 ♀ (Fig. 14); white label “Zool. Mus. / Greifswald / II 27305b”; broken last abdominal segments mounted on platelet under specimen; ZIMG, ZIMG-II-27305b.

**Additional labels**

Blue species label “gracillima / Gerst.\* / Jenssoki Buchh.”; both specimens with white label “Leptocola gracillima / Gerstaecker, 1883 female / det R. Ehrmann, III. 1999” // red label “female SYNTYPE / *Leptocola gracillima* / Gerstaecker, 1883 / det. T. Mainda 2024”.

**Type locality**

Cameroon, Jenssoki (probably South of Douala) (Buchholz leg.).

**Current status**

Valid species.

Family Leptomantellidae Schwarz & Roy, 2019  
Genus *Leptomantella* Uvarov, 1940

*Leptomantella* (*Leptomantella*) Uvarov, 1940: 176.

*Leptomantella albella* (Burmeister, 1838)

*Mantis* (*Thespis*) *albella* Burmeister, 1838: 533.

**Material examined** (4 males)

UNKNOWN LOCALITY • 1 ♂; white label “Thespis / albella Burm. / p. 533.”; ZIMG • 1 ♂; white label “Miopteryx / albella de H. / sec. Dohrn”; ZIMG • 2 ♂♂; ZIMG.

**Additional labels**

All with white label “Leptomantella (L.) albella / (Burmeister, 1838) male / det. R. Ehrmann, III. 1999”.

*Leptomantella fragilis* (Westwood, 1889)

*Mantis fragilis* Westwood, 1889: 31–32.

**Material examined** (2 males)

INDONESIA • 1 ♂; yellow label “Sumatra Fruhst.”; ZIMG • 1 ♂; white label “male Java occid. / Fruhstorf.”; ZIMG.

**Additional labels**

Both with white label “Leptomantella (L.) fragilis / (Westwood, 1889) male / det. R. Ehrmann, III. 1999”.



13

Fig. 13. *Leptocola gracillima* Gerstaecker, 1883, syntype, ♀, (ZIMG-II-27305a), habitus and labels. Metric scale showing a 1 cm black bar for reference.



14

**Fig. 14.** *Leptocola gracillima* Gerstaecker, 1883, syntype, ♀, (ZIMG-II-27305b), habitus and labels. Metric scale showing a 1 cm black bar for reference.

Family Liturgusidae Giglio-Tos, 1915  
Genus *Liturgusa* Saussure, 1869

*Liturgousa* Saussure, 1869: 55, 62.

*Liturgusa lichenalis* Gerstaecker, 1889  
Fig. 15

*Liturgusa lichenalis* Gerstaecker, 1889: 52–53.

### Type material

#### Holotype

PERU • ♀ (Fig. 15); green label “Lfd N: 46 / *Liturgusa* / *lichenalis* / Jurimaguas (Peru) / IV 5, 2, (3)” // two white labels “FIGURED / Rehn 1955” // “Zool. Mus. / Greifswald / II 27309” // reddish label “Gen. *Liturgousa* / Sp. *lichenalis* / Ref. Gerstaecker, 1889 / HOLOTYPE female / EMAU” // red label “female HOLOTYPE / *Liturgusa lichenalis* / Gerstaecker, 1889 / det. T. Mainda 2024”; ZIMG, ZIMG-II-27309.



**Fig. 15.** *Liturgusa lichenalis* Gerstaecker, 1889, holotype, ♀, (ZIMG-II-27309), habitus and labels. Metric scale showing a 1 cm black bar for reference.

**Additional labels**

Green species label “lichenalis / Gerst.\* / Jurima- / guas. Garlepp”.

**Type locality**

Peru, Yurimaguas, Loreto (“Jurimaguas”) (Garlepp leg.).

**Current status**

Valid species.

**Remarks**

As Gerstaecker (1889) referred to a single female specimen (“Patria: Jurimaguas (Perù)”), it is considered the holotype by monotypy.

*Liturgusa nubeculosa* Gerstaecker, 1889

Figs 16–17

*Liturgusa nubeculosa* Gerstaecker, 1889: 54–56.

**Type material** (2 females)

**Lectotype**

BRAZIL • ♀ (Fig. 16); one small green label “female Ega / Hahnel” // one green label “Lf.N: 48a, b / female / Ega (Amazonas) / IV, 5, 2, (2)” // red label “TYPE” // two white labels “FIGURED / Rehn 1955” // “Zool. Mus. / Greifswald / II 27310b” // red label “female LECTOTYPE / *Liturgusa nubeculosa* / Gerstaecker, 1889 / designated by Rehn (1954) / det. T. Mainda 2024”; ZIMG, ZIMG-II-27310b.



**Fig. 16.** *Liturgusa nubeculosa* Gerstaecker, 1889, lectotype, ♀, (ZIMG-II-27310b), habitus and labels. Metric scale showing a 1 cm black bar for reference.

### Paralectotype

BRAZIL • 1 ♀ (Fig. 17); green label “Lfd.N: 48 / Liturgusa / nubeculosa / Fonteboa (Amazonas) / IV 5, 2, (2)” // white label “Zool. Mus. / Greifswald / II 27310a” // red label “female PARALECTOTYPE / *Liturgusa nubeculosa* / Gerstaecker, 1889 / designated by Rehn (1954) / Art.73.2.2, 74.1.3 / det. T. Mainda 2024”; ZIMG, ZIMG-II-27310a.

### Additional labels

Green species label “nubeculosa / Gerst.\* / Fonteboa Hahnel”; both specimen with white label “Liturgusa nubeculosa / Gerstaecker, 1889 female / det. R. Ehrmann, III. 1999”.

### Type locality

Brazil, Fonte Boa and Tefé (“Ega”), Amazonas Province (Hahnel leg.).

### Current status

Valid species.

### Remarks

Svenson (2014) referred to a single female specimen from Greifswald (ZIMG-II-27310a, Fig. 17) as the “holotype”, with the locality given as “Ega, Fonteboa (Amazonas)” (see also his figures 28a–b). However, the original type series described by Gerstaecker (1889) comprises two female specimens from two distinct localities: Ega and Fonteboa, both in Brazil. Rehn (1954) mentioned both female specimens



**Fig. 17.** *Liturgusa nubeculosa* Gerstaecker, 1889, paralectotype, ♀, (ZIMG-II-27310a), habitus and labels. Metric scale showing a 1 cm black bar for reference.

housed in the ZIMG and identified the specimen from Ega (ZIMG-II-27310b, Fig. 16) as the “single type”. This specimen bears a red “Type” label and, in accordance with Article 74.5 of the ICZN (1999), Rehn’s statement constitutes a valid lectotype designation. Consequently, the specimen from Ega (ZIMG-II-27310b) is recognized here as the lectotype. The remaining syntype specimen, previously identified as a holotype by Svenson (2014) (i.e., ZIMG-II-27310a), is subsequently recognized as a paralectotype in accordance with Article 74.1.3 of the ICZN (1999).

*Liturgusa superba* Gerstaecker, 1889  
Fig. 10

**Type material**

See *Hagiomantis superba* (Gerstaecker, 1889).

Family Photinidae Giglio-Tos, 1915  
Genus *Macromantis* Saussure, 1871

*Macromantis* Saussure, 1871e: 28, 77–78.

*Macromantis hyalina* (De Geer, 1773)

*Mantis hyalina* De Geer, 1773: 410.

**Material examined** (1 male)

UNKNOWN LOCALITY • 1 ♂; white label “*Macromantis hyaline* / (De Geer, 1773) male /det. R. Ehrmann, III. 1999”; ZIMG.

Family Thespidae Saussure, 1869  
Genus *Macromusonia* Hebard, 1922

*Macromusonia* Hebard, 1922: 329.

*Macromusonia major* (Saussure & Zehntner, 1894)

*Musonia major* Saussure & Zehntner, 1894: 165.

**Material examined** (1 male)

BRAZIL • 1 ♂; green label “Fonteboa Stdgr.” // one white label “*Macromusonia major* / (Sauss. & Zehntner, 1894) male / det. R. Ehrmann, III. 1999”; ZIMG.

Family Mantidae Latreille, 1802  
Genus *Mantis* (Linnaeus, 1758)

*Gryllus* (*Mantis*) Linnaeus, 1758: 425.

*Mantis annulipes* Audinet-Serville, 1839  
Figs 7–8

**Type material**

See *Fuga annulipes* (Audinet-Serville, 1839).

*Mantis religiosa eichleri* Bazyluk, 1960

*Mantis religiosa eichleri* Bazyluk, 1960: 250–253.

**Material examined** (2 males)

GHANA • 2 ♂♂; blue label “Akkra / Buchh.” // white label “Mantis religiosa eichleri / Bazyluk, 1960 male / det. R. Ehrmann, III. 1999”; ZIMG.

*Mantis religiosa religiosa* (Linnaeus, 1758)

*Gryllus (Mantis) religiosus* Linnaeus, 1758: 426.

**Material examined** (10 males, 6 females, 5 juvs)

ITALY • 1 ♂; brownish label “religiosa / Lin. Panz. Burm. / oratoria et sancta / Fab. / Bozen Gerst.”; ZIMG • 9 ♂♂, 6 ♀♀, 5 juvs; ZIMG.

**Additional labels**

All with white label “Mantis religiosa religiosa / Linné, 1758 / det. R. Ehrmann, III. 1999”.

*Mantis religiosa sinica* Bazyluk, 1960

*Mantis religiosa sinica* Bazyluk, 1960: 255–257.

**Material examined** (3 females)

MALAYSIA • 1 ♀; brownish label “Penang / August 1889 / H.Fruhstorfer”; ZIMG • 2 ♀♀; ZIMG.

**Additional labels**

All with white label “Mantis religiosa sinica / Bazyluk, 1960 male / det. R. Ehrmann, III. 1999”.

Family Mantoididae Giglio-Tos, 1919

Genus *Mantoida* Newman, 1838

*Mantoida* Newman, 1838: 178–179.

*Mantoida tenuis* (Perty, 1833)

*Haplophora tenuis* Perty, 1833: 127.

**Material examined** (1 male)

BRAZIL • 1 ♂; two white labels “Chaeteessa / tenuis Perty ? / taf. 25, fig. 7 / Rio grande do / Sul / Stdgr.” // “Mantoida tenuis / (Perty, 1833) male / det. R. Ehrmann, III. 1999”; ZIMG.

Family Metallyticidae Giglio-Tos, 1917

Genus *Metallyticus* Westwood, 1835

*Metallyticus* Westwood, 1835: 441.

*Metallyticus splendidus* Westwood, 1835

*Metallyticus splendidus* Westwood, 1835: 442.

**Material examined** (1 male, 1 juv.)

INDONESIA • 1 ♂; yellow label “splendens / Westw. / Zool. Jour. V pl. 22 / Sumatra Fruhst.”; ZIMG  
• 1 juv.; brownish label “Bedagei. int. / Sumatra s O.K. / +-600’ 2.<sup>de</sup> Sem. 89 / I.Z. Kannegieter.”; ZIMG.

**Additional labels**

Both with white label “Metallyticus splendidus / Westwood, 1835 / det. R. Ehrmann, III. 1999”.

*Metallyticus violaceus* (Burmeister, 1838)

*Metalleutica violacea* Burmeister, 1838: 527.

**Material examined** (2 females)

INDONESIA • 1 ♀; yellow label “violacea / Burm. / Charp. Pl. 3 / chalybea / Serv. / Java occid. Fruhst.”;  
ZIMG • 1 ♀; brownish label “Java occident. / Sukabumi / 2000 1893 / H.Fruhstorfer”; ZIMG.

**Additional labels**

Both with white label “Metallyticus violacea / (Burmeister, 1838) / det. R. Ehrmann, III. 1999”.

Family Acanthopidae Burmeister, 1838  
Genus *Metilia* Stål, 1877

*Metilia* Stål, 1877: 89.

*Metilia brunnerii* (Saussure, 1871)

Fig. 2

*Acanthops brunnerii* Saussure, 1871e: 144–145.

*Acanthops adusta* Gerstaecker, 1889: 57–58 (synonymized by Rehn 1935).

**Type material** of *Acanthops adusta* Gerstaecker, 1889

**Holotype**

PERU • ♂ (Fig. 2); white labels “Metilia / Stål. / p. 89 / ab integra Stål, dittinet” // “*Metilia / brunneri* / male (Sauss.) / Det. Rehn 1934” // “*Metillia brunnerii* / (Saussure, 1871) male / det. R. Ehrmann, III. 1999” // “Zool. Mus. / Greifswald / II 27297” // red label “male HOLOTYPE / *Acanthops adusta* / Gerstaecker, 1889 / (original combination) / det. T. Mainda 2024”; genitalia in small tube on pin; ZIMG, ZIMG-II-27297.

**Additional labels**

Green species label “Lfd.N: 50 / *Acanthops adusta* / Iquitos (Amazonas) / IV.9.2.(1)”.

**Type locality**

Peru, Iquitos.

**Remarks**

As Gerstaecker (1889) referred to a single male specimen, it is considered the holotype by monotypy. According to Ehrmann (2002), the female holotype of *Metillia brunnerii* is deposited in the ZIMG. However, no such specimen is currently housed in the Greifswald collection. Instead, the collection contains a male holotype of its junior synonym, *Acanthops adusta* Gerstaecker, 1889.

Family Photinaidae Giglio-Tos, 1915  
Genus *Metriomantis* Saussure & Zehntner, 1894

*Metriomantis* Saussure & Zehntner, 1894: 151–152.

*Metriomantis ovata* Saussure & Zehntner, 1894

*Metriomantis ovata* Saussure & Zehntner, 1894: 152.

**Material examined** (2 males)

BRAZIL • 1 ♂; green label “Male Blumen / au / Müll.”; ZIMG • 1 ♂; ZIMG.

**Additional labels**

Both with white label “Photina (*Metriomantis*) pilosa / Chopard, 1912 male / det. R. Ehrmann, III. 1999”.

*Metriomantis pilosella* Giglio-Tos, 1915

*Metriomantis pilosella* Giglio-Tos, 1915b: 70–71.

**Material examined** (1 male)

UNKNOWN LOCALITY • 1 ♂; white label “Photina (*Metriomantis*) pilosella / Giglio-Tos, 1915 male / det. R. Ehrmann, III. 1999”; ZIMG.

Family Thespidae Saussure, 1869  
Genus *Miobantia* Giglio-Tos, 1917

*Miobantia* Giglio-Tos, 1917: 73–74.

*Miobantia ciliata* (Stål, 1860)

*Mantis ciliata* Stål, 1860: 313.

**Material examined** (2 males)

BRAZIL • 2 ♂♂; green label “Bahia, Brasilia / Fruhstorfer.” // white label “*Miobantia ciliata* / (Stål, 1860) male / det. R. Ehrmann, III. 1999”; ZIMG.

Family Miomantidae Westwood, 1889  
Genus *Miomantis* Saussure, 1870

*Miomantis* Saussure, 1870: 225, 228.

*Miomantis cephalotes* Gerstaecker, 1883

Fig. 18

**Type material**

see *Taumantis cephalotes* (Gerstaecker, 1883).

*Miomantis scabricollis* Gerstaecker, 1883

Fig. 19

*Miomantis scabricollis* Gerstaecker, 1883: 84–85.

### Type material

#### Holotype

GHANA • ♀ (Fig. 19); two white labels “Zool. Mus. / Greifswald / II 27303” // “*Miomantis scabricollis* / Gerstaecker, 1883 female / det. R. Ehrmann, III. 1999” // red label “female HOLOTYPE / *Miomantis scabricollis* / Gerstaecker, 1883 / (original combination) / det. T. Mainda 2024”; ZIMG, ZIMG-II-27303.

#### Additional labels

Blue species label “*scabricollis* / Gerst.\* / Akkra Buchh.”.

#### Type locality

Ghana, Akkra (Buchholz leg.).

#### Current status

Valid species.



**Fig. 18.** *Miomantis cephalotes* Gerstaecker, 1883, holotype, ♀, (ZIMG-II-27302), habitus and labels. Metric scale showing a 1 cm black bar for reference.

### Remarks

As Gerstaecker (1883) referred to a single female specimen (“Akkra: August”), it is considered the holotype by monotypy.

Family Hymenopodidae Giglio-Tos, 1915  
Genus *Odontomantis* Saussure, 1871

*Odontomantis* Saussure, 1871a: 32.

*Odontomantis* Saussure, 1871c: 180.

*Odontomantis planiceps* (De Haan, 1842)

*Mantis* (*Oxypilus*) *planiceps* De Haan, 1842: 88.



**Fig. 19.** *Miomantis scabricollis* Gerstaecker, 1883, holotype, ♀, (ZIMG-II-27303), habitus and labels. Metric scale showing a 1 cm black bar for reference.

**Material examined** (3 males, 2 females)

INDONESIA • 1 ♂; brownish label “Micromantis / Javana Sauss. / pl. 4 fig. 11. male female / Java or. Fruhst.”; ZIMG • 2 ♂♂, 2 ♀♀; ZIMG.

**Additional labels**

All with white label “*Odontomantis planiceps* / (De Haan, 1842) / det. R. Ehrmann, III. 1999”.

Family Mantidae Latreille, 1802  
Genus *Omomantis* Saussure, 1899

*Omomantis* Saussure, 1899: 588–589.

*Omomantis zebrata* (Charpentier, 1843)

*Mantis zebrata* Charpentier, 1843: pl. 39.

**Material examined** (1 female)

SOUTH AFRICA • 1 ♀; brownish label “Pseudomantis / zebrata Charp. / Orth. ff. 39. / Port Natal / Heyne” // white label “*Omomantis zebrata* / (Charpentier, 1843) female / det. R. Ehrmann, III. 1999”; ZIMG.

Genus *Orthodera* Burmeister, 1838

*Orthodera* Burmeister, 1838: 529.

*Orthodera ministralis* (Fabricius, 1775)

*Mantis ministralis* Fabricius, 1775: 277–278.

**Material examined** (1 male, 2 females)

AUSTRALIA • 1 ♀; violet label “ministralis / Fab. / prasina Burm. / rubrocoxata / Blanch / Mus. / Sidney Godeffr.”; ZIMG • 1 ♂, 1 ♀; ZIMG.

**Additional labels**

All with white label “*Orthodera m. ministralis* / (Fabricius, 1775) / det. R. Ehrmann, III. 1999”.

*Orthodera rubrocoxata* (Audinet-Serville, 1839)

*Mantis rubrocoxata* Audinet-Serville, 1839: 203.

**Material examined** (1 male)

UNKNOWN LOCALITY • 1 ♂; white label “*Orthodera rubrocoxata* / (Serville, 1839) / det. R. Ehrmann, III. 1999”; ZIMG.

Genus *Oxyopsis* Caudell, 1904

*Oxyopsis* Caudell, 1904: 184.

*Oxyopsis acutipennis* (Stål, 1877)

*Oxyops acutipennis* Stål, 1877: 71.

**Material examined** (1 female)

PERU • 1 ♀; green label “female Cumbase / Perù, Stdgr.” // white label “*Oxyopsis acutipennis* / (Stål, 1877) female / det. R. Ehrmann, III. 1999”; ZIMG.

*Oxyopsis peruviana* Chopard, 1916

*Oxyopsis peruviana* Chopard, 1916: 182–184.

**Material examined** (1 male, 2 females)

PERU • 1 ♂; green label “male Cumbase / Perù, Stdgr.”; ZIMG • 1 ♀; green label “rubicunda / Stoll / fig. 96 / male Stigmatodiluta / Sauss. / Pebas Stdgr.”; ZIMG • 1 ♀; ZIMG.

**Additional labels**

All with white label “*Oxyopsis peruviana* / Chopard, 1916 / det. R. Ehrmann, III. 1999”.

Family Hymenopodidae Giglio-Tos, 1915

Genus *Oxypilus* Audinet-Serville, 1831

*Oxypilus* Audinet-Serville, 1831: 50.

Subgenus *Oxypilus (Anoxypilus)* Giglio-Tos, 1915

*Oxypilus (Anoxypilus)* Giglio-Tos, 1915c: 136.

*Oxypilus (Anoxypilus) polyacanthus* (Gerstaecker, 1889)

Fig. 20

*Sibylla (?) polyacantha* Gerstaecker, 1889: 49–51.

**Type material** of *Sibylla polyacantha* Gerstaecker, 1889

**Holotype**

CONGO • ♂ (Fig. 20); blue label “Lfd.N: 44 / Sybilla / polyacantha / Congo (Stanley-Pool) / IV 10, 2 (3)” // five white labels “Zool. Mus. / Greifswald / II 27315” // “*Oxypilus (O.) polyacanthus* / (Gerstaecker, 1889) male / det. R. Ehrmann, III. 1999” // “genitalia / pre. M.Stiewe / No. TSP.01” // “Holotype / *Oxypilus (Anoxypilus) polyacanthus* / (Gerstaecker, 1889) / det. Stiewe & Roy, 2012” // “Type / S. polyac. / genitalia / prep. M.STIEWE / NO. TSP.01” // red label “male HOLOTYPE / *Sibylla polyacantha* / Gerstaecker, 1889 / (original combination) / det. T. Mainda 2024”; genital embedded and fixed on separate pin; ZIMG, ZIMG-II-27315.

**Additional labels**

Blue species label “polyacantha / Gerst.\* / Stanley / Pool / Congo Stdgr.”.

**Type locality**

Congo, Stanley Pool (Staudinger leg.).

**Current status**

According to Roy & Stiewe (2013), the valid combination is *Oxypilus (Anoxypilus) polyacanthus* (Gerstaecker, 1889), following the synonymy proposed by Giglio-Tos (1915c: 136).

**Remarks**

As Gerstaecker (1889) referred to a single male specimen (“Patria: Congo (Stanley-Pool)”), it is considered the holotype by monotypy.

The current Mantodea online database (Otte *et al.* 2025), lists both *Sibylla* (*Sibylla*) *polyacantha* Gerstaecker, 1889 and *Oxypilus* (*Anoxypilus*) *polyacanthus* as valid species. The authorship for the latter species, however, is erroneously assigned to Giglio-Tos (1915c). Due to the incorrect authorship assignment, the database system might have failed to merge the original combination and consequently did not recognize the two species as synonyms.

Family Nanomantidae Brunner de Wattenwyl, 1893

Genus *Paraoxypilus* Saussure, 1870

*Paraoxypilus* Saussure, 1870: 224, 227.

*Paraoxypilus verreauxii* Saussure, 1870

*Paraoxypilus verreauxii* Saussure, 1870: 227.



**Fig. 20.** *Sibylla polyacantha* Gerstaecker, 1889, holotype, ♂, (ZIMG-II-27315), habitus and labels. Metric scale showing a 1 cm black bar for reference.

**Material examined** (1 male, 1 female)

AUSTRALIA • 1 ♀; violet label “Verreauxii / Sauss. / Sidney Mus. Godeffr.”; ZIMG • 1 ♂; ZIMG.

**Additional labels**

Both with white label “*Paraoxypilus verreauxii* / Saussure, 1870 / det. R. Ehrmann, III. 1999”.

Family Miomantidae Westwood, 1889  
Genus *Parasphendale* Schulthess-Schindler, 1898

*Parasphendale* Schulthess-Schindler, 1898: 177–178.

*Parasphendale arabukosokokei* Borer & Ehrmann, 2022

Fig. 21

*Parasphendale arabukosokokei* Borer & Ehrmann, 2022: 4–6.



**Fig. 21.** *Parasphendale arabukosokokei* Borer & Ehrmann, 2022, paratype, ♀, (ZIMG-II-29421), habitus and labels. Metric scale showing a 1 cm black bar for reference.

## Type material

### Paratype

KENYA • 1 ♀ (Fig. 21); two white labels “Kenya-SE: part of Arabuko Sokoke Forest / vic. Malindi, (03.42125°S – 039.89815°E), (site 06) / leg. S. Materna & T. Schulze, 05.-17. VIII 2012 (captive bred) / ex ovo Reinhard Ehrmann 2018-2019” // “ZIMG-II-29421” // three red labels “*Parasphendale arabukosokokei* / Borer & Ehrmann, 2022 / PARATYPE female / Greifswald (ZIMG) (#-05)” // “Kenya / ZIMG-MANTODEA / 05. Female PT / Parasphendale / arabukosokokei” // “Kenya / ZIMG-MANTODEA / 05. Female / Parasphendale / arabukosokokei / PT”; ZIMG, ZIMG-II-29421.

### Type locality

SE Kenya, part of Arabuko Sokoke Forest, vic. of Malindi, 3.42125° S, 39.89815° E (S. Materna and T. Schulze leg.).

### Current status

Valid species.

### *Parasphendale vincta* (Gerstaecker, 1869)

*Mantis vincta* Gerstaecker, 1869: 209–210.

### Material examined (3 males, 1 female)

TANZANIA • 1 ♀; blue label “vincta / Gerst.\* / Bagamojo Fischer” // three white labels “Zool. Mus. / Greifswald / II 27304” // “Parasphendale agrionina / (Gerstaecker, 1869) female / det. R. Ehrmann, III. 1999” // “Parasphendale vincta / (Gerstaecker, 1869) female / det. R. Ehrmann, III. 2019” // red label “Tanzania / ZIMG-MANTODEA / 04. Female / Parasphendale / vincta / LT” // white label “No Type! Different sex and locality! / Lectotype was never designated! / T. Mainda 2024”; ZIMG, ZIMG-II-27304 • 1 ♂; blue label “male agrionina / Gerst. ? / Sansibar / v. Nettelbl.” // four white labels “Parasphendale agrionina / (Gerstaecker, 1869) male / det. R. Ehrmann, III. 1999” // “ZIMG-II-29418” // “Parasphendale vincta / (Gerstaecker, 1869) male / det. R. Ehrmann, III. 2019” // “Genital-prep. / M. Borer Nr. 0068” // two red labels “*Parasphendale vincta* / PARALECTOTYPE / ZIMG Mantodea / Mantodea genitalia male / Nr. 0068 M. Borer / prep. Euparal” // “Sansibar / ZIMG-MANTODEA / 01. Male / Parasphendale / vincta / PLT” // white label “No Type! Different sex and locality! / Paralectotype was never designated! / T. Mainda 2024”; ZIMG, ZIMG-II-29418 • 1 ♂; three white labels “Parasphendale agrionina / (Gerstaecker, 1869) male / det. R. Ehrmann, III. 1999” // “ZIMG-II-29419” // “Parasphendale vincta / (Gerstaecker, 1869) male / det. R. Ehrmann, III. 2019” // red label “Sansibar / ZIMG-MANTODEA / 02. Male / Parasphendale / vincta / PLT” // white label “No Type! Different sex and locality! / Paralectotype was never designated! / T. Mainda 2024”; ZIMG, ZIMG-II-29419 • 1 ♂; three white labels “Parasphendale agrionina / (Gerstaecker, 1869) male / det. R. Ehrmann, III. 1999” // “ZIMG-II-29420” // “Parasphendale vincta / (Gerstaecker, 1869) male / det. R. Ehrmann, IV. 2017” // red label “Sansibar / ZIMG-MANTODEA / 03. Male / Parasphendale / vincta / PLT” // white label “No Type! Different sex and locality! / Paralectotype was never designated! / T. Mainda 2024”; ZIMG, ZIMG-II-29420.

### Remarks

Gerstaecker (1873: 15) noted that, despite the striking differences in shape, coloration, and markings between *Mantis vincta* and *M. agrionina*, it was not inconceivable that both male and female specimens might belong to the same species. In that case, he argued that the name *Mantis vincta* would have priority, should the two taxa prove to be conspecific. According to Ehrmann (2002: 269) *M. agrionina* was listed as the senior synonym of *M. vincta*, although no information was provided as to who established this synonymy or when it was proposed. Borer and Ehrmann (2022: 4) agreed with Gerstaecker’s (1873)

suggestion and treated both taxa as synonyms under *M. vincta*. Despite the recognition of the synonymy, no official taxonomic action followed. In addition, no type information was provided in their treatment. The caption of their figures 44–46 refers to a “*Parasphendale vincta*, lectotype” from Greifswald, yet no formal lectotype designation is made in the main text. According to Article 74.7 of the ICZN (1999), a lectotype designation must be explicit and intentional; merely labeling a specimen or referencing it in figure legends does not constitute a valid lectotype designation. Therefore, the type status implied in Borer & Ehrmann (2022) is invalid under the Code.

Moreover, the specimens housed in the ZIMG collection do not appear to belong to the original type series of either *M. vincta* or *M. agrionina*. Gerstaecker (1869, 1873) described only females of *M. vincta* from Zanzibar (Tanzania), explicitly stating “Long. Corp. 49–60 mill. female.” and “Specimina feminina in diversis terrae Sansibaricae locis...” (Gerstaecker 1869: 210). The described specimens were collected between Mombasa and Wanga, at Lake Jipe, and between Endara and Kiriama during October to December 1862. The purported lectotype of *M. vincta* in Greifswald, a female from Bogamojo (mainland Tanzania), originates from a different locality and therefore does not belong to the original type series. Consequently, it cannot be assigned lectotype status (ICZN 1999, Article 74). For *M. agrionina*, only a single male specimen was described, collected in Mombasa, Kenya: “Long. Corp. 38, c. alis 41 mill. male.” and “Specimen unicum masculinum ad oppidum Mombas m. Septr. 1862 inventum” (Gerstaecker 1869: 209). In contrast, the three male specimens housed in Greifswald—invalidly labeled as paralectotypes—are from Zanzibar. Although Gerstaecker (1869) mentioned Zanzibar as the type locality for *M. vincta*, that taxon is based solely on females. The male holotype of *M. agrionina* is housed in the Museum für Naturkunde, Berlin (MfN, see Borer & Ehrmann 2022: fig. 38). As such, the ZIMG males are not part of the type series and cannot be considered syntypes or paralectotypes.

Family Mantidae Latreille, 1802  
Genus *Parastagmatoptera* Saussure, 1871

*Parastagmatoptera* Saussure, 1871e: 83–84.

*Parastagmatoptera sottilei* Lombardo & Ippolito, 2015

*Parastagmatoptera sottilei* Lombardo & Ippolito, 2015: 247–250.

**Material examined** (1 male)

PERU • 1 ♂; four white labels “Peru / Dep. Huánuco / Panguana / ACP, Rio Yuyapichis, S09°37' W74°56' / 230 mNN, 14.IV.2018, lux / leg. Michael Falkenberg” // “Mantodea / ex. Coll. Karlsruhe (SMNK)” // “ZIMG-II-29417” // “*Parastagmatoptera sottilei* / Lombardo & Ippolito, 2015 male / det. C. Schwarz VII.2018”; ZIMG, ZIMG-II-29417.

*Parastagmatoptera unipunctata* (Burmeister, 1838)

*Mantis unipunctata* Burmeister, 1838: 540.

**Material examined** (2 males, 1 female)

BRAZIL • 1 ♂; two green labels “Male Sao Paulo / Stdgr.” // “unipunctata / Burm. / Brasil Baden” // white label “*Parastagmatoptera unipunctata* / (Burmeister, 1838) male / det. R. Ehrmann, III. 1999”; ZIMG • 1 ♂; green label “Olivença Hahnel” // white label “*Parastagmatoptera vitrepennis* / Bruner, 1906 male / det. R. Ehrmann, III. 1999”; ZIMG • 1 ♀; green label “pellucida / Serv. / vitrea Burm.? / Theresopolis Fruhst.” // white label “*Parastagmatoptera serricornis* / Kirby, 1904 female / det. R. Ehrmann, III. 1999”; ZIMG.

Family Photinaidae Giglio-Tos, 1915  
Genus *Photina* (Burmeister, 1838)

*Mantis (Photina)* Burmeister, 1838: 531–532.

*Photina laevis* Giglio-Tos, 1915

*Photina laevis* Giglio-Tos, 1915b: 71–72.

**Material examined** (1 female)

BRAZIL • 1 ♀; brownish label “Theresiopolis” // white label “Photina (Photina) laevis / Giglio-Tos, 1915 female / det. R. Ehrmann, III. 1999”; ZIMG.

*Photina vitrea* (Burmeister, 1838)

*Mantis (Photina) vitrea* Burmeister, 1838: 532.

**Material examined** (1 male)

BRAZIL • 1 ♂; green label “Fonteboa Stdgr.” // white label “Photina (Photina) vitrea / (Burmeister, 1838) male / det. R. Ehrmann, III. 1999”; ZIMG.

Genus *Photinella* Giglio-Tos, 1915

*Photinella* Giglio-Tos, 1915b: 73.

*Photinella magna* Giglio-Tos, 1915

*Photinella magna* Giglio-Tos, 1915b: 74.

**Material examined** (1 male)

BRAZIL • 1 ♂; green label “Nov. / Friburg Bescke” // white label “Photinella magna / Giglio-Tos, 1915 male / det. R. Ehrmann, III. 1999”; ZIMG.

Family Nanomantidae Brunner de Wattenwyl, 1893  
Genus *Phthersigena* Stål, 1871

*Phthersigena* Stål, 1871: 401.

*Phthersigena (Phthersigena) conspersa* Stål, 1871

*Phthersigena conspersa* Stål, 1871: 401.

**Material examined** (1 male)

AUSTRALIA • 1 ♂; violet label “conspersa / Sauss. / Phtherg. conspersa / Stål. / Quennsld. Mus. Godef.” // white label “Phthersigena conspersa / Stål, 1871 male / det. R. Ehrmann, III. 1999”; ZIMG.

Family Hymenopodidae Giglio-Tos, 1915  
Genus *Phyllocrania* Burmeister, 1838

*Phyllocrania* Burmeister, 1838: 548–549.

*Phyllocrania paradoxa* Burmeister, 1838

*Phyllocrania paradoxa* Burmeister, 1838: 549.

**Material examined** (2 males, 1 juv. female)

CONGO • 1 ♂; two brownish labels “Congo / Ledien” // “Phylloc. Insignis / Westw. male. pl. XII. fig. 7.”; ZIMG.

SIERRA LEONE • 1 ♂; blue label “Male Preuss. / Sierr. Leone”; ZIMG.

TANZANIA • 1 juv. ♀; blue label “insignis, / Westw. / Bagamojo / Fischer”; ZIMG.

**Additional labels**

All with white label “*Phyllocrania paradoxa* / Burmeister, 1838 / det. R. Ehrmann, III. 1999”.

Family Mantidae Latreille, 1802  
Genus *Plistospilota* Giglio-Tos, 1911

*Plistospilota* Giglio-Tos, 1911: 6–8.

*Plistospilota validissima* (Gerstaecker, 1883)  
Figs 22–25

*Polyspilota validissima* Gerstaecker, 1883: 89–91.



**Fig. 22.** *Polyspilota validissima* Gerstaecker, 1883, syntype, ♂, (ZIMG-II-27314a), habitus and labels. Metric scale showing a 1 cm black bar for reference.



Fig. 23. *Polyspilota validissima* Gerstaecker, 1883, syntype, ♂, (ZIMG-II-27314b), habitus and labels. Metric scale showing a 1 cm black bar for reference.

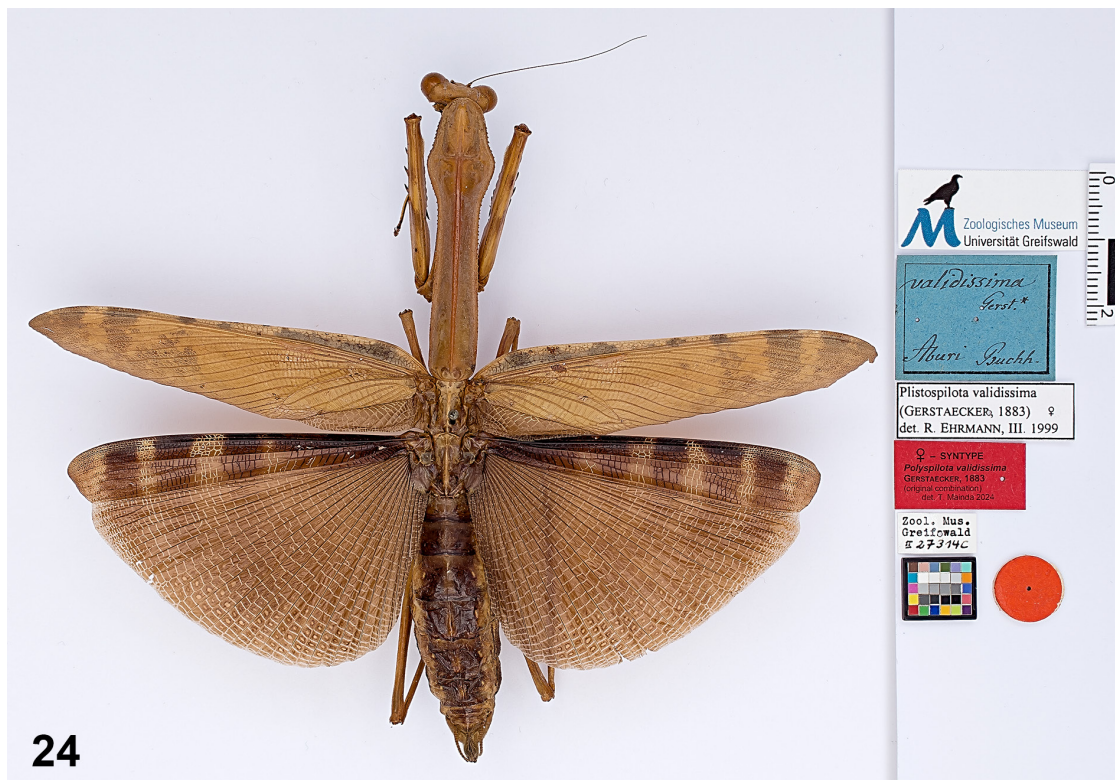


Fig. 24. *Polyspilota validissima* Gerstaecker, 1883, syntype, ♀, (ZIMG-II-27314c), habitus and labels. Metric scale showing a 1 cm black bar for reference.

**Type material** of *Polyspilota validissima* Gerstaecker, 1883 (2 males, 2 females)

**Syntypes**

GHANA • 2 ♂♂ (Figs 22–23), 2 ♀♀ (Figs 24–25); all specimens with white labels “Zool. Mus. / Greifswald / II 27314” (a–d) // white label “*Polyspilota validissima* / Gerstaecker, 1883 / det. R. Ehrmann, III. 1999” // red label “SYNTYPE / *Polyspilota validissima* / Gerstaecker, 1883 / (original combination) / det. T. Mainda 2024”; ZIMG, ZIMG-II-27314a to ZIMG-II-27314d.

**Additional labels**

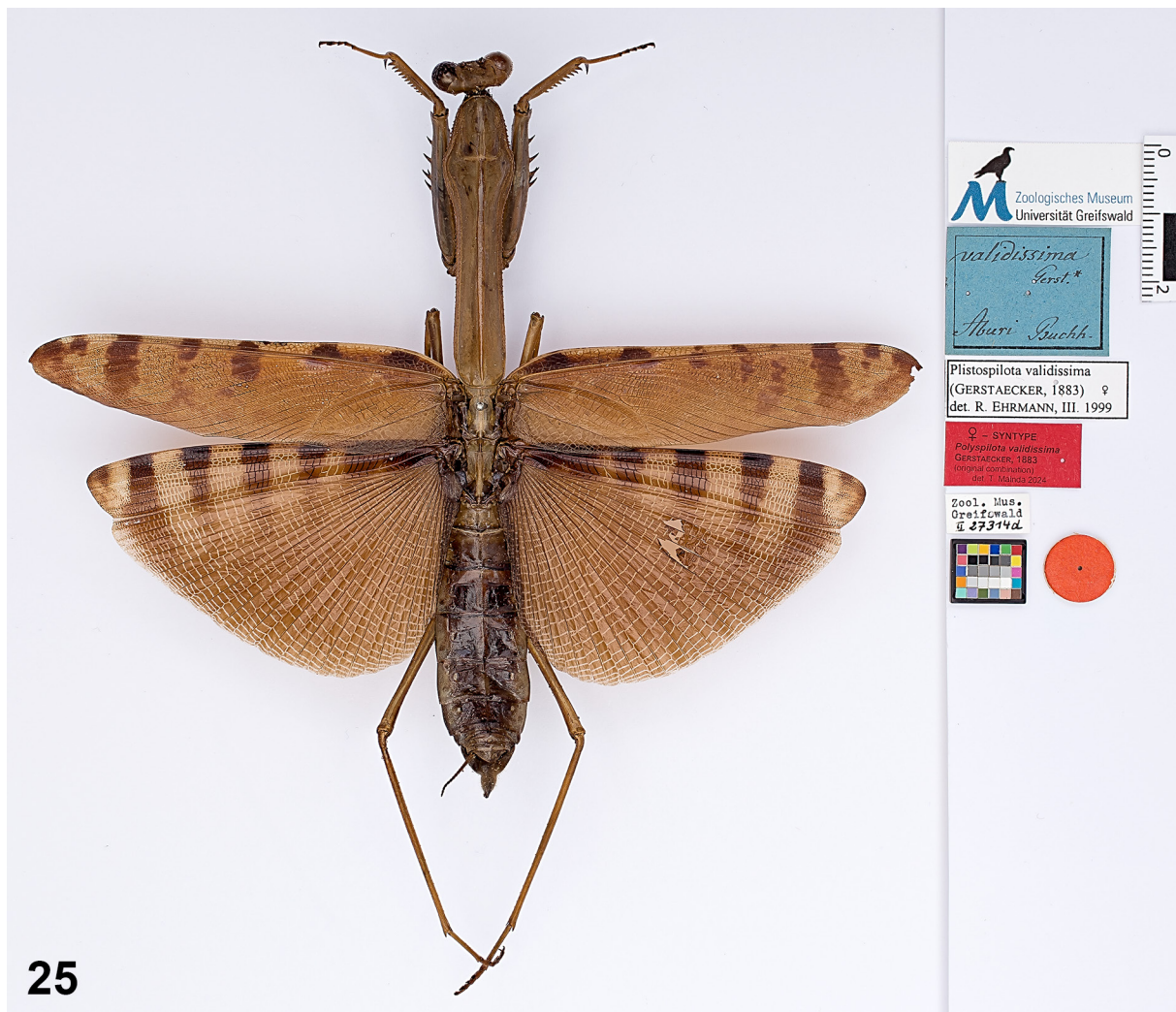
Blue species label “*validissima* / Gerst.\* / Aburi Buchh.”.

**Type locality**

Ghana, Aburi (Buchholz leg.).

Genus *Polyspilota* Burmeister, 1838

*Polyspilota* Burmeister, 1838: 534.



**Fig. 25.** *Polyspilota validissima* Gerstaecker, 1883, syntype, ♀, (ZIMG-II-27314d), habitus and labels. Metric scale showing a 1 cm black bar for reference.

*Polyspilota aeruginosa aeruginosa* (Goeze, 1778)

*Mantis aeruginosa* Goeze, 1778: 35.

**Material examined** (7 males, 11 females)

CAMEROON • 1 ♂; blue label “Victoria / Buchh.” // white label “ZIMG-II- / 28850”; ZIMG, ZIMG-II-28850 • 1 ♂; blue label “Victoria / Buchh.” // white label “ZIMG-II- / 28847”; ZIMG, ZIMG-II-28847 • 1 ♂; white label “ZIMG-II- / 28846”; ZIMG, ZIMG-II-28846 • 1 ♀; white label “ZIMG-II- / 28848”; ZIMG, ZIMG-II-28848 • 1 ♀; white label with red writing “Victoria / Dec” // white label “ZIMG-II- / 28849”; ZIMG, ZIMG-II-28849 • 1 ♂; white label with red writing “Mungo Sept.”; ZIMG • 2 ♀♀; blue label “Jensoki / Buchh.”; ZIMG • 1 ♀; white label with red writing “Mungo / April”; ZIMG • 1 ♀; white label with red writing “Bonjon / go / März”; ZIMG • 1 ♀; blue label “var. / Mungo Buchh.”; ZIMG • 1 ♂, 1 ♀; unknown locality; ZIMG.

GABON • 1 ♀; “Dongila / Buchh.”; ZIMG • 1 ♀; white label with red writing “Limba / reni / Mai”; ZIMG.

GHANA • 1 ♂ (possibly); white label with red writing “Aburi / Aug.” // white label “M”; ZIMG • 1 ♀; blue label “Aburi / Buchh.”; ZIMG.

TANZANIA • 1 ♂; blue label “Baga- / moja. / Fischer”; ZIMG.

**Additional labels**

The first five specimens from Cameroon (three males and two females) with orange label “*Polyspilota aeruginosa* Goeze, 1778 / Syn. *Polyspilota striata* Gerstaecker, 1883 Syn-Typus”.

Blue species label in front of series “*striata* / Stoll / Gerst.\* / *pustulata* Stoll / Serv. / *variegata* Ol. Burm. / Abó Buchh.”; all specimens (except the male with the “M” label) with white label “*Polyspilota a. aeruginosa* / (Goeze, 1778) / det. R. Ehrmann, III. 1999”; all with white label “No Type! Species was described / by Goeze (1778). Specimen only / mentioned by Gerstaecker (1883). / T. Mainda 2024”.

**Remarks**

Ehrmann (2002: 286) indicated that the type specimen of this species might be housed in Greifswald. This is supported by orange labels and assigned ZIMG numbers associated with five specimens. However, the synonymy noted on the orange labels—“*Polyspilota aeruginosa* Goeze, 1778 / Syn. *Polyspilota striata* Gerstaecker, 1883 Syntypus” (see Material section above)—suggests that Ehrmann may have been referring to the type specimen of *P. striata*, rather than *P. aeruginosa*. Regarding *P. aeruginosa*, the species was originally described by Goeze in 1778, and the ZIMG collection contains no type material from him. Additionally, the specimens in question were collected many years later by R. Buchholz, further confirming that they cannot represent type material of *P. aeruginosa*. As for *P. striata*, the name *Polyspilota striata* Gerstaecker, 1883 is not valid, the correct authorship is Stoll, 1813. Gerstaecker (1883: 89) merely referred to specimens identified as *Polyspilota striata* Stoll, 1813 (now a synonym of *P. a. aeruginosa*), and these observations were marked with an asterisk on the main species label. This asterisk, commonly seen in historical labels in the collection (e.g., in this case “Gerst.\*”), typically denotes type specimens but can also indicate specimens cited in publications. Therefore, the type indication on these specimens may have arisen from a misinterpretation.

*Polyspilota picta* Gerstaecker, 1883

Figs 26–28



Fig. 26. *Polyspilota picta* Gerstaecker, 1883, syntype, ♂, (ZIMG-II-27313a), habitus and labels. Metric scale showing a 1 cm black bar for reference.



Fig. 27. *Polyspilota picta* Gerstaecker, 1883, syntype, ♂, (ZIMG-II-27313b), habitus and labels. Metric scale showing a 1 cm black bar for reference.

**Type material**

See *Prohierodula picta* (Gerstaecker, 1883).

*Polyspilota validissima* Gerstaecker, 1883

Figs 22–25

**Type material**

See *Plistospilota validissima* (Gerstaecker, 1883).

Family Deroplatyidae Westwood, 1889

Genus *Popa* Stål, 1856

*Popa* Stål, 1856: 169.

*Popa spurca spurca* Stål, 1856

*Popa spurca spurca* Stål, 1856: 169.

**Material examined** (2 females)

MADAGASCAR • 1 ♀; blue label “Madag. Hildebr.” // brownish label “a *Popa undata* / Fab. Stål female / diffinata !”; ZIMG.

TANZANIA • 1 ♀; blue label “Female Nguëlo / Afric. orient. / Rolle”; ZIMG.

**Additional labels**

Both with white label “*Popa spurca spurca* / Stål, 1856 female / det. R. Ehrmann, III. 1999”.



**Fig. 28.** *Polyspilota picta* Gerstaecker, 1883, syntype ♂ (ZIMG-II-27313c), habitus and labels. Metric scale showing a 1 cm black bar for reference.

Family Mantidae Latreille, 1802  
Genus *Prohierodula* Bolivar, 1908

*Prohierodula* Bolivar, 1908: 461–462.

*Prohierodula mundamensis* Giglio-Tos, 1911

*Prohierodula picta* Giglio-Tos, 1911: 37–38.

**Material examined** (1 male)

GABON • 1 ♂; brownish label with red writing “Gabun” // white label “Prohierodula mundamensis / Giglio-Tos, 1911 male / det. R. Ehrmann, III. 1999”; ZIMG.

*Prohierodula picta* (Gerstaecker, 1883)  
Figs 26–28

*Polyspilota picta* Gerstaecker, 1883: 88–89.

**Type material** of *Polyspilota picta* Gerstaecker, 1883 (3 males)

**Syntypes**

CAMEROON • 1 ♂ (Fig. 27); blue label “Victoria / Buchh.” // white label “Zool. Mus. / Greifswald / II 27313b”; ZIMG, ZIMG-II-27313b.

GABON • 1 ♂ (Fig. 26); white label “Zool. Mus. / Greifswald / II 27313a”; ZIMG, ZIMG-II-27313a  
• 1 ♂ (Fig. 28); white label “Zool. Mus. / Greifswald / II 27313c”; ZIMG, ZIMG-II-27313c.

**Additional labels**

Blue species label “picta / Gerst.\* / Dongila Buchh.”; all with white label “Prohierodula picta / (Gerstaecker, 1883) male / det. R. Ehrmann, III. 1999” // orange label “Prohierodula [Polyspilota] picta (Gerstaecker, 1883) Syn-Typus” // red label “male SYNTYPE / *Polyspilota picta* / Gerstaecker, 1883 / (original combination) / det. T. Mainda 2024”.

**Type locality**

Cameroon, Limbé (“Victoria”) (Buchholz leg.) and Gabon, Donguila (“Dongila”) (Buchholz leg.).

Family Hymenopodidae Giglio-Tos, 1915  
Genus *Pseudocreobotra* Saussure, 1870

*Pseudocreobotra* Saussure, 1870: 241, 242.

*Pseudocreobotra ocellata* (Palisot De Beauvois, 1805)

*Empusa ocellata* Palisot De Beauvois, 1805: 110.

**Material examined** (1 female)

GABON • 1 ♀; two blue labels “Limbareni / Buchh.” // “ocellata / Serv. / Empusa ocellata / Pal. / Wahlbergi Stal / Eninga Buchh.” // white label “Pseudocreobotra ocellata / (Pal. De Beauvois, 1805) female / det. R. Ehrmann, III. 1999”; ZIMG.

*Pseudocreobotra wahlbergii* Stål, 1871

*Pseudocreobotra wahlbergii* Stål, 1871: 385.

**Material examined** (1 male, 1 female)

SOUTH AFRICA • 1 ♂; blue label “Natal / Stdgr.”; ZIMG.

TANZANIA • 1 ♀; blue label “Bogamojo / Fischer”; ZIMG.

**Additional labels**

Both with white label “*Pseudocreobotra wahlbergii* / Stål, 1871 / det. R. Ehrmann, III. 1999”.

Family Eremiaphilidae Saussure, 1869

Genus *Pseudogalepsus* Beier, 1954

*Pseudogalepsus* Beier, 1954: 29–30.

*Pseudogalepsus modestus* (Gerstaecker, 1869)

*Tarachodes modesta* Gerstaecker, 1869: 209.

**Material examined** (1 male)

TANZANIA • 1 ♂; blue label “Sansibar / v. Nettelbl.” // white label “*Pseudogalepsus modestus* / (Gerstaecker, 1869) male / det. R. Ehrmann, III. 1999”; ZIMG.

Family Mantidae Latreille, 1802

Genus *Pseudomantis* Saussure, 1869

*Pseudomantis* Saussure, 1869: 56.

*Pseudomantis albofimbriata* (Stål, 1860)

*Mantis albofimbriata* Stål, 1860: 312.

**Material examined** (1 female)

AUSTRALIA • 1 ♀; violet label “albofimbriata / Stål / Sauss. / Mantid. / pl. 4, fig. 7 / Sidney Mus. Godeffr.” // white label “*Pseudomantis albofimbriata* / (Stål, 1860) female / det. R. Ehrmann, III. 1999”; ZIMG.

Genus *Pseudovates* Saussure, 1869

*Pseudovates* Saussure, 1869: 53, 60.

*Pseudovates chlorophaea* (Blanchard, 1836)

*Mantis chlorophaea* Blanchard, 1836: 1–2.

**Material examined** (1 female)

GUATEMALA • 1 ♀; brownish label “Theoclytes / chlorophanus / female Blanch. / Guatemale Dohrn” // white label “*Phyllovates chlorophaea* / (Blanchard, 1836) female / det. R. Ehrmann, III. 1999”; ZIMG.

*Pseudovates cingulata* (Drury, 1773)

*Mantis cingulata* Drury, 1773: 89.

**Material examined** (1 male, 1 female)

VENEZUELA? • 1 ♂; two brownish labels “Male Female Merida / Stdgr.” // “Theoclytes / Serv.”; ZIMG • 1 ♀; ZIMG.

**Additional labels**

Both with white label “Phyllovates cingulata / (Drury, 1773) / det. R. Ehrmann, III. 1999”.

Genus *Rhombodera* Burmeister, 1838

*Rhombodera* Burmeister, 1838: 536.

*Rhombodera kirbyi* Beier, 1952

*Rhombodera kirbyi* Beier, 1952: 302.

**Material examined** (1 female)

TIMOR ISLAND • 1 ♀; brownish label “valida fg. 17 / Timor” // three white labels “Rhombodera kirbyi / Beier, 1952 female / det. R. Ehrmann, III. 1999” // “03. Female / ZIMG / Timor” // “Rhombodera kirbyi / Beier, 1952 female / det. R. Ehrmann, IX. 2011”; ZIMG.

*Rhombodera mjobergi* (Werner, 1930)

*Hierodula (Rhombodera) mjobergi* Werner, 1930: 5.

**Material examined** (1 male, 2 females)

INDONESIA • 1 ♂; brownish label “Male Female Java / orient. Fruhst.” // two white labels “Rhombodera valida / Burmeister, 1838 male / det. R. Ehrmann, III. 1999” // “01. Male / ZIMG / gehört zu / Nr. 02”; ZIMG • 1 ♀; yellow label “basalis / De Haan / Sauss. / Sumatra Dohrn” // two white labels “Rhombodera basalis / (De Haan, 1842) female / det. R. Ehrmann, III. 1999” // “02. Female / ZIMG / gehört zu / Nr. 01”; ZIMG.

TIMOR ISLAND • 1 ♀; yellow label “valida / Burm. Saus. fig. / 17 / extensicollis / Serv. / Timor Stdgr.” // two white labels “Rhombodera valida / Burmeister, 1838 female / det. R. Ehrmann, III. 1999” // “04. Female / ZIMG / Timor”; ZIMG.

**Additional labels**

All with an additional white label “Rhombodera mjobergi (sic.!) / Werner, 1930 / det. R. Ehrmann, IX. 2011”.

Family Eremiaphilidae Saussure, 1869  
Genus *Schizocephala* Audinet-Serville, 1831

*Schizocephala* Audinet-Serville, 1831: 55.

*Schizocephala bicornis* (Linnaeus, 1758)

*Gryllus (Mantis) bicornis* Linnaeus, 1758: 426.

**Material examined** (1 male, 1 juv. female)

SRI LANKA • 1 ♂; brownish label “Schizocephala / Serv. / oculata Stoll / fig. 38 - 53”; ZIMG • 1 juv. ♀; ZIMG.

**Additional labels**

Both with brownish label “Nord Ceylon / Juni 1889 / H.Fruhstorfer” // white label “Schizocephala bicornis / (Linné, 1758) / det. R. Ehrmann, III. 1999”.

Family Hymenopodidae Giglio-Tos, 1915

Genus *Sibylla* Stål, 1856

*Sibylla* Stål, 1856: 168.

*Sibylla polyacantha* Gerstaecker, 1889

Fig. 20

**Type material**

See *Oxypilus (Anoxypilus) polyacanthus* (Gerstaecker, 1889).

Family Mantidae Latreille, 1802

Genus *Sphodromantis* Stål, 1871

*Sphodromantis* Stål, 1871: 390.

*Sphodromantis balachowskyi* La Greca, 1967

*Sphodromantis balachowskyi* La Greca, 1967: 24–27.

**Material examined** (1 male)

UNKNOWN LOCALITY • 1 ♂; white label “Sphodromantis balachowskyi / La Greca, 1967 male / det. R. Ehrmann, III. 1999”; ZIMG.

*Sphodromantis lineola lineola* (Burmeister, 1838)

*Mantis (Stagmatoptera) lineola* Burmeister, 1838: 537.

**Material examined** (6 males, 10 females, 3 specimens)

CAMEROON • 1 ♂; brownish label “Victori. / 9. 73.”; ZIMG • 1 ♂; brownish label with red writing “Abo / März”; ZIMG • 1 ♀; brownish label with red writing “Victoria / Decemb.”; ZIMG • 1 ♀; brownish label with red writing “Victoria / Nov.”; ZIMG • 1 ♀; brownish label with red writing “Victoria / April”; ZIMG • 1 spec.; brownish label with red writing “Victoria / Decemb.”; ZIMG • 1 spec.; brownish label with red writing “Abo / März”; ZIMG.

GABON • 2 ♀♀; brownish labels with red writing “Limba / reni / Mai”; ZIMG.

GHANA • 1 ♂, 1 ♀; brownish label “Akkra / 29/8.72.”; ZIMG • 1 ♂, 2 ♀♀; brownish label “Aburi / 9.72.”; ZIMG • 1 ♂; two brownish labels “Akkra / 29./8.72.” // “Hierodule / lineola / Male Female Burm.”; ZIMG.

NIGERIA • 1 ♂; brownish label “Male Female Lagos / Kricheldorff.”; ZIMG.

UNKNOWN LOCALITY • 2 ♀♀; ZIMG • 1 spec.; brownish label “var. / Hierodula / bimaculata / Burm. Male Female.”; ZIMG.

### Additional labels

All specimens with sex labels hold an additional white label “*Sphodromantis l. lineola* / (Burmeister, 1838) / det. R. Ehrmann, III. 1999”.

### *Sphodromantis viridis viridis* (Forskål, 1775)

*Gryllus viridis* Forskål, 1775: 81.

### Material examined (1 male, 1 female)

UNKNOWN LOCALITY • 1 ♂, 1 ♀; white label “*Sphodromantis viridis viridis* / (Forskål, 1775) / det. R. Ehrmann, III. 1999”; ZIMG.

### Genus *Sphodropoda* Stål, 1871: 399

*Sphodropoda* Stål, 1871: 399.

### *Sphodropoda tristis* (Saussure, 1871)

*Mantis tristis* Saussure, 1871a: 93.

*Mantis tristis* Saussure, 1871c: 241.

### Material examined (1 male)

UNKNOWN LOCALITY • 1 ♂; white label “*Sphodropoda* (S.) *tristis* / (Saussure, 1871) male / det. R. Ehrmann, III. 1999”; ZIMG.

### *Sphodropoda viridis* Tindale, 1923

*Sphodropoda viridis* Tindale, 1923: 446.

### Material examined (1 female)

UNKNOWN LOCALITY • 1 ♀; white label “*Sphodropoda* (S.) *viridis* / Tindale, 1923 female / det. R. Ehrmann, III. 1999”; ZIMG.

### Genus *Stagmatoptera* Burmeister, 1838

*Mantis* (*Stagmatoptera*) Burmeister, 1838: 537.

### *Stagmatoptera binotata* Scudder, 1869

*Stagmatoptera binotata* Scudder, 1869: 341–342.

*Mantis* (*Stagmatoptera*) *rogatoria* Burmeister, 1838: 540 (non *Mantis rogatoria* Houttuyn in Stoll, 1813).

### Material examined (3 males, 3 females)

BRAZIL • 1 ♂; green label “*rogatoria* / (Illig.) Burm.\* / sec. Typ. / Stoll fig. 95 (fem.) / Olivença Hahnel”// three white labels “*Stagmatoptera binotata* / Scudder, 1869 male / det. R. Ehrmann, III. 1999”// “ZIMG-II- / 28851” / “No Type! Specimen is too young: Dr. / Hahnel collected between 1879 and / 1887 in the Amazonas region! / T. Mainda 2024”; ZIMG, ZIMG-II-28851.

PERU • 1 ♂; green label “Iquitos / male Stdgr.”; ZIMG • 1 ♀; brownish label “Female Iquitos / Stdgr.”; ZIMG.

SOUTH AMERICA • 1 ♂; brownish label “Südame / rika”; ZIMG.

UNKNOWN LOCALITY • 2 ♀♀; ZIMG.

#### **Additional labels**

All with additional white label “Stagmatoptera binotata / Scudder, 1869 / det. R. Ehrmann, III. 1999”.

#### **Remarks**

The taxonomic classification of this species follows Rodrigues & Canello (2016). Ehrmann (2002) noted the presence of a male allotype in the ZIMG collection. However, the specimens housed in Greifswald cannot be the types of *Stagmatoptera binotata* Scudder, 1869 (a replacement name for the homonymous *Mantis (Stagmatoptera) rogatoria* described by Burmeister in 1838: 540), nor of *Mantis rogatoria* Houttuyn in Stoll, 1813 (a synonym of *Stagmatoptera precaria* (Linnaeus, 1758)). Ehrmann’s assumption likely stemmed from a green label on one of the male specimens, which bears the annotation: “rogatoria (Illig.) Burm.\* sec. Typ.” On the same label, however, the note “Stoll fig. 95 (fem.)” also appears, suggesting that “sec. Typ” may have been intended merely as a reference to figure 95 in Stoll’s work, which depicts a female. The specimen in question also carries a locality label: “Olivença Hahnel”. This refers to Dr Paul Hahnel (1843–1887), a German entomologist who conducted several collecting expeditions in South America between 1879 and 1884. One such expedition took him to “São Paulo de Olivença” (Staudinger 1890), the locality where this specimen was collected. This indicates that the Greifswald specimen was obtained several decades after the original descriptions of both *Mantis rogatoria* and *Stagmatoptera binotata*, and also significantly later than any material studied by Burmeister (1838: 540). Other specimens in the series bear labels marked “Stdgr.”, the standard abbreviation for the insect trader Otto Staudinger. This further supports the conclusion that these specimens were collected at a much later date and thus cannot represent original type material.

#### *Stagmatoptera precaria* (Linnaeus, 1758)

*Gryllus (Mantis) precaria* Linnaeus, 1758: 426.

#### **Material examined** (2 males, 1 female)

BRAZIL • 1 ♀; brownish label “Theresopolis / Michaelis”; ZIMG.

PERU • 1 ♂; brownish label “Male Female Stdgr. / Jurimaguas”; ZIMG.

SOUTH AMERICA • 1 ♂; green label without text; ZIMG.

#### **Additional labels**

All with white label “Stagmatoptera precaria / (Linné, 1758) / det. R. Ehrmann, III. 1999”.

#### *Stagmatoptera supplicaria* (Stoll, 1813)

*Mantis supplicaria* Stoll, 1813: 51–52.

#### **Material examined** (1 male, 1 female)

VENEZUELA • 1 ♀; brownish label “4202 / La Guayra / J. Smith”; ZIMG • 1 ♂; ZIMG.

#### **Additional labels**

Both with white label “Stagmatoptera supplicaria / (Stoll, 1813) / det. R. Ehrmann, III. 1999”.

Genus *Stagmomantis* Saussure, 1869

*Stagmomantis* Saussure, 1869: 56, 65.

*Stagmomantis carolina* (Linnaeus, 1763)

*Gryllus* (*Mantis*) *carolinus* Linnaeus, 1763: 396–397.

**Material examined** (2 females)

VENEZUELA? • 1 ♀; brownish label “Female Merida / Stdgr.”; ZIMG.

USA • 1 ♀; green label “Carolina / Lin. Burm. / Texas Stdgr.”; ZIMG.

**Additional labels**

Both with white label “*Stagmomantis carolina* / (Johansson, 1763) female / det. R. Ehrmann, III. 1999”.

**Remarks**

According to Anderson (2023), the authorship of this species was historically misattributed to Boas Johansson (1742–1809), a student of Linnaeus. In fact, the species was described by Linnaeus himself in *Amoenitates Academicae* (Linnaeus 1763), not in the dissertation defended by Johansson.

*Stagmomantis venusta* Saussure & Zehntner, 1894

*Stagmomantis venusta* Saussure & Zehntner, 1894: 145.

**Material examined** (1 female)

GUATEMALA • 1 ♀; brownish label “Guatemala / Dohrn” // white label “*Stagmomantis venusta* / Saussure & Zehntner, 1894 female / det. R. Ehrmann, III. 1999”; ZIMG.

Genus *Statilia* Stål, 1877

*Statilia* Stål, 1877: 55.

*Statilia apicalis* (Saussure, 1871)

*Mantis apicalis* Saussure, 1871b: 291–292.

*Mantis apicalis* Saussure, 1871d: 415–416.

**Material examined** (1 male)

AUSTRALIA • 1 ♂; violet label “apicalis / Sauss. / Gayndah Mus. Godeffr.” // white label “*Statilia apicalis* (Saussure, 1871) male / det. R. Ehrmann, III. 1999”; ZIMG.

*Statilia maculata maculata* (Thunberg, 1784)

*Mantis maculata* Thunberg, 1784: 61–62.

**Material examined** (2 males, 1 female)

INDONESIA • 1 ♂; brownish label “Sumatr. Stdgr.”; ZIMG • 1 ♀; yellow label “de Haani / Sauss. / maculata De Haan / pl. 18, fig. 5 / Sumatra Fruhst.”; ZIMG • 1 ♂; ZIMG.

**Additional labels**

All with white label “*Statilia maculata maculata* / (Thunberg, 1784) / det. R. Ehrmann, III. 1999”.

Family Deroplatyidae Westwood, 1889  
Genus *Stenopyga* (*Agriomantis*) Giglio-Tos, 1916

*Agriomantis* Giglio-Tos, 1916: 37.

*Stenopyga* (*Agriomantis*) *casta* (Gerstaecker, 1883)  
Fig. 6

*Euchomena casta* Gerstaecker, 1883: 83–84.

**Type material** of *Euchomena casta* Gerstaecker, 1883

**Holotype**

EQUATORIAL GUINEA • ♂ (Fig. 6); two white labels “Zool. Mus. / Greifswald / II 27301” // “*Stenopyga* (*Agriomantis*) *casta* / (Gerstaecker, 1883) male / det. R. Ehrmann, III. 1999” // red label “male HOLOTYPE / *Euchomena casta* / Gerstaecker, 1883 / (original combination) / det. T. Mainda 2024”; ZIMG, ZIMG-II-27301.

**Additional labels**

Blue species label “*casta* / Gerst.\* / Fernan- / do Pó Buchh.”.

**Type locality**

Equatorial Guinea, Bioko (“Fernando Pó”) (Buchholz leg.).

**Remarks**

As Gerstaecker (1883) referred to a single male specimen from Fernando Pó (March, Buchholz leg.), it is considered the holotype by monotypy.

Family Mantidae Latreille, 1802  
Genus *Tamolanica* Werner, 1923

*Tamolanica* Werner, 1923: 399.

*Tamolanica tamolana* (Brancsik, 1897)

*Rhombodera tamolana* Brancsik, 1897: 62–63.

**Material examined** (2 males, 2 females)

NEW GUINEA • 1 ♂; brownish label “Male Female Nov. Guinea / Fruhstorf.”; ZIMG • 1 ♂, 2 ♀♀; ZIMG.

**Additional labels**

All with white label “*Tamolanica tamolana* / (Brancsik, 1897) / det. R. Ehrmann, III. 1999”.

Family Eremiaphilidae Saussure, 1869  
Genus *Tarachodes* Burmeister, 1838

*Tarachodes* Burmeister, 1838: 528.

*Tarachodes irrorata* Gerstaecker, 1883  
Figs 29–30

**Type material**

See *Tarachodes* (*Barbachodes*) *afzellii* (Stål, 1871).

*Tarachodes oxycephala* Gerstaecker, 1883  
Fig. 9

**Type material**

See *Galepsus* (*Lygdamia*) *oxycephalus* (Gerstaecker, 1883).

Subgenus *Tarachodes* (*Tarachodes*) Burmeister, 1838

*Tarachodes* Burmeister, 1838: 528.

*Tarachodes* (*Tarachodes*) *insidiator* Wood-Mason, 1882

*Tarachodes insidiator* Wood-Mason, 1882: 22–23.

**Material examined** (1 male)

SOUTH AFRICA • 1 ♂; brownish label “Port Natal / Heyne” // white label “*Tarachodes* (T.) *insidiator* Wood-Mason, 1882 male / det. R. Ehrmann, III. 1999”; ZIMG.

Subgenus *Tarachodes* (*Barbachodes*) Beier, 1957

*Tarachodes* (*Barbachodes*) Beier, 1957: 128–129.

*Tarachodes* (*Barbachodes*) *afzellii* (Stål, 1871)  
Figs 29–30

*Chiropacha afzelii* Stål, 1871: 396.

*Tarachodes irrorata* Gerstaecker, 1883: 79–80.

**Type material** of *Tarachodes irrorata* Gerstaecker, 1883 (2 males)

**Syntypes**

GHANA • 1 ♂ (Fig. 29); white label “Zool. Mus. / Greifswald / II 27307a”; ZIMG, ZIMG-II-27307a  
• 1 ♂ (Fig. 30); white label “Zool. Mus. / Greifswald / II 27307b”; ZIMG, ZIMG-II-27307b.

**Other material examined** (1 male)

SIERRA LEONE • 1 ♂; blue label “Sierra Leone / Preuss.” // white label “*Tarachodes* (*Barbachodes*) *afzellii* / (Stål, 1871) male / det. R. Ehrmann, III. 1999”; ZIMG.

**Additional labels**

Blue species label “*irrorata* / Gerst.\* / Akkra Buchh.”; both with white label “*Tarachodes* (*Barbachodes*) *afzellii* / (Stål, 1871) male / det. R. Ehrmann, III. 1999” // red label “male SYNTYPE / *Tarachodes irrorata* / Gerstaecker, 1883 / (original combination) / det. T. Mainda 2024”.

**Type locality**

Ghana, Akkra (Buchholz leg.).



Fig. 29. *Tarachodes irrorata* Gerstaecker, 1883, syntype, ♂, (ZIMG-II-27307a), habitus and labels. Metric scale showing a 1 cm black bar for reference.



Fig. 30. *Tarachodes irrorata* Gerstaecker, 1883, syntype, ♂, (ZIMG-II-27307b), habitus and labels. Metric scale showing a 1 cm black bar for reference.

### Remarks

Ehrmann (2002) stated that the female holotype of *Tarachodes afzelii* is housed in the ZIMG collection. However, this specimen is not present in the collection. Instead, two male syntypes of the junior synonym *Tarachodes irrorata* are housed there. No type specimens designated by Stål are present in the ZIMG Mantodea collection.

Family Mantidae Latreille, 1802  
Genus *Tarachomantis* Brancsik, 1893

*Tarachomantis* Brancsik, 1893: 176–177.

*Tarachomantis (Tarachomantis) alaotrana* Giglio-Tos, 1913

*Tarachomantis alaotrana* Giglio-Tos, 1913: 406.

**Material examined** (1 male, 1 female)

MADAGASCAR • 1 ♂; blue label “Madag. Hildebr.”; ZIMG • 1 ♀; ZIMG.

### Additional labels

Both with white label “*Tarachomantis alaotrana* / Giglio-Tos, 1913 / det. R. Ehrmann, III. 1999”.

Family Miomantidae Westwood, 1889  
Genus *Taumantis* Giglio-Tos, 1917

*Taumantis* Giglio-Tos, 1917: 47.

*Taumantis cephalotes* (Gerstaecker, 1883)  
Fig. 18

*Miomantis cephalotes* Gerstaecker, 1883: 85–86.

**Type material** of *Miomantis cephalotes* Gerstaecker, 1883

#### Holotype

CAMEROON • ♀ (Fig. 18); two white labels “Zool. Mus. / Greifswald / II 27302” // “*Taumantis cephalotes* / (Gerstaecker, 1883) female / det. R. Ehrmann, III. 1999” // red label “female HOLOTYPE / *Miomantis cephalotes* / Gerstaecker, 1883 / (original combination) / det. T. Mainda 2024”; ZIMG, ZIMG-II-27302.

### Additional labels

Blue species label “*cephalotes* / Gerst.\* / Victoria Buchh.”.

### Type locality

Cameroon, Limbé (“Victoria”) (leg Buchholz).

### Remarks

As Gerstaecker (1883) referred to a single female specimen (“Camaroons (Victoria: Juni)”), it is considered the holotype by monotypy.

Family Mantidae Latreille, 1802  
Genus *Tenodera* Burmeister, 1838

*Tenodera* Burmeister, 1838: 534.

*Tenodera aridifolia* (Stoll, 1813)

*Mantis aridifolia* Stoll, 1813: 65.

**Material examined** (2 males, 1 female)

MALAYSIA • 1 ♂; brownish label “Male Female Penang / Fruhstorfer”; ZIMG • 1 ♂, 1 ♀; ZIMG.

**Additional labels**

All with white label “*Tenodera aridifolia* / (Stoll, 1813) / det. R. Ehrmann, III. 1999”.

*Tenodera australasiae* (Leach, 1814)

*Mantis australasiae* Leach, 1814: 78.

**Material examined** (3 males, 1 female)

AUSTRALIA • 1 ♀; violet label “Australasiae / Leach / Sauss. / Mant. Darchii Mc Ley / tessellata Burm. / Rockhamp. Mus. Godeffr.”; ZIMG.

BORNEO • 1 ♂; brownish label “Male Borneo / Stdgr.”; ZIMG.

MALAYSIA • 1 ♂; brownish label “Male Penang / Fruhst.”; ZIMG.

UNKNOWN LOCALITY • 1 ♂; ZIMG.

**Additional labels**

All with white label “*Tenodera australasiae* / (Leach, 1814) / det. R. Ehrmann, III. 1999”.

*Tenodera superstitiosa* (Fabricius, 1781)

*Mantis superstitiosa* Fabricius, 1781: 348.

**Material examined** (2 males, 4 females)

CAMEROON • 1 ♀; blue label “superstitiosa / Fab. Gerst.\* / attenuata Stoll / fasciata Ol. Burm. / Jenssoki Buchh.”; ZIMG, ZIMG-II-28867.

GABON • 1 ♂; blue label “Eninga / Buchh.”; ZIMG.

GHANA • 1 ♀; blue label “Akkra / Buchh.”; ZIMG.

SIERRA LEONE • 1 ♂; blue label “Male Female Freetown / Sierra Leone / Preuss.”; ZIMG.

TANZANIA • 1 ♀; blue label “Bagamojo / Fischer”; ZIMG.

UNKNOWN LOCALITY • 1 ♀; ZIMG, ZIMG-II-28868.

**Additional labels**

All with white label “*Tenodera superstitiosa* / (Fabricius, 1781) / det. R. Ehrmann, III. 1999”.

Family Gonypetidae Westwood, 1889  
Genus *Theopompa* Stål, 1877

*Theopompa* Stål, 1877: 47.

*Theopompa burmeisteri* (De Haan, 1842)

*Mantis* (*Mantis*) *burmeisteri* De Haan, 1842: 80–81.

**Material examined** (1 male)

BORNEO • 1 ♂; yellow label “Burmeisteri / De Haan / pl. 16, fig. 3 / Borneo Stdgr.” // white label “Theopompa burmeisteri / (De Haan, 1842) male / det. R. Ehrmann, III. 1999”; ZIMG.

*Theopompa servillei* (De Haan, 1842)

*Mantis* (*Mantis*) *servillei* De Haan, 1842: 81.

**Material examined** (1 male, 4 females)

INDONESIA • 1 ♂; yellow label “Servillei / De Haan / pl. 16, fig. 6 / Java / orient. Fruhst.”; ZIMG  
• 4 ♀♀; ZIMG.

**Additional labels**

All with white label “Theopompa servillei / (De Haan, 1842) / det. R. Ehrmann, III. 1999”.

Family Dactylopterygidae Giglio-Tos, 1915  
Genus *Theopompella* Giglio-Tos, 1917

*Theopompella* Giglio-Tos, 1917: 86–87.

*Theopompella heterochroa* (Gerstaecker, 1883)  
Figs 11–12

*Humbertiella heterochroa* Gerstaecker, 1883: 80–82.

**Type material** of *Humbertiella heterochroa* Gerstaecker, 1883 (2 males)

**Syntypes**

CAMEROON • 1 ♂ (Fig. 11); white label “Zool. Mus. / Greifswald / II 27306a”; ZIMG, ZIMG-II-27306a • 1 ♂ (Fig. 12); white label “Zool. Mus. / Greifswald / II 27306b”; ZIMG, ZIMG-II-27306b.

**Additional labels**

Blue species label “heterochroa / Gerst.\* / Quaqua Buchh.”; both with white label “Theopompella heterochroa / (Gerstaecker, 1883) male / det. R. Ehrmann, III. 1999” // red label “male SYNTYPE / *Humbertiella heterochroa* / Gerstaecker, 1883 / (original combination) / det. T. Mainda 2024”.

**Type locality**

Cameroon, Quaqua (Buchholz leg.).

**Additional material examined** (1 female)

UNKNOWN LOCALITY • 1 ♀; white label “Theopompella heterochroa (Gerstaecker, 1883), female, det. R. Ehrmann, III. 1999”; ZIMG.

Family Hymenopodidae Giglio-Tos, 1915  
Genus *Theopropus* Saussure, 1898

*Theopropus* Saussure, 1898: 183–248.

*Theopropus cattulus* (Westwood, 1889)

*Creobroter cattulus* Westwood, 1889: 42.

**Material examined** (2 males, 5 females)

INDONESIA • 1 ♂; brownish label “Male Female Java orient. / Fruhstorfer”; ZIMG • 1 ♀; brownish label “Java occident. / Pangalengan / 4000 1893 / H.Fruhstorfer.”; ZIMG • 1 ♂, 4 ♀♀; ZIMG.

**Additional labels**

All with white label “*Theopropus cattulus* / (Westwood, 1889) / det. R. Ehrmann, III. 1999”.

Family Thespidae Saussure, 1869  
Genus *Thespis* Audinet-Serville, 1831

*Thespis* Audinet-Serville, 1831: 54.

*Thespis parva* (Drury, 1773)

*Mantis parva* Drury, 1773: pl. 39, fig. 5.

**Material examined** (1 male)

PERU • 1 ♂; green label “Juanfué / Garlepp” // white label “*Thespis parva* / (Drury, 1773) male / det. R. Ehrmann, III. 1999”; ZIMG.

Genus *Thesprotia* Stål, 1877

*Thesprotia* Stål, 1877: 67.

*Thesprotia infumata* (Audinet-Serville, 1839)

*Mantis infumata* Audinet-Serville, 1839: 173.

**Material examined** (1 female)

BRAZIL • 1 ♀; green label “Blumenau Müll.” // two brownish labels “*Thespis* / spec. nymph. / Blumenau Müll.” // “*Thesp. infumata* / Serv. ? pl. 79” // white label “*Thesprotia infumata* / (Serville, 1839) female / det. R. Ehrmann, III. 1999”; ZIMG.

Family Nanomantidae Brunner de Wattenwyl, 1893  
Genus *Tropidomantis* Stål, 1877

*Tropidomantis* Stål, 1877: 51.

*Tropidomantis tenera* (Stål, 1860)

*Mantis tenera* Stål, 1860: 314.

**Material examined** (3 males, 3 females)

BORNEO • 1 ♀; brownish label “Oxypilus / planiceps / De Haan Male. / pl.17, fig. 11 / Borneo Stdg.”; ZIMG.

INDONESIA • 1 ♂; brownish label “Sumatr. Stdgr.”; ZIMG • 1 ♀; brownish label “Male Java occid. / Fruhstorf.”; ZIMG.

UNKNOWN LOCALITY • 1 ♀; brownish label “Gatt. Tropidomantis / Stål (sec. coll. Bruner) / Art ohne Namen!”; ZIMG • 2 ♂♂; ZIMG.

**Additional labels**

All with white label “Tropidomantis (T.) tenera / (Stål, 1860) / det. R. Ehrmann, III. 1999”.

Family Mantidae Latreille, 1802  
Genus *Zoolea* Audinet-Serville, 1839

*Zoolea* Audinet-Serville, 1839: 154.

*Zoolea lobipes* (Olivier, 1792)

*Mantis lobipes* Olivier, 1792: 637.

**Material examined** (1 female)

VENEZUELA • 1 ♀; green label without text // brownish label “4201 / Laguayra / J. Smith” // three white labels “*Zoolea lobipes* / (Olivier, 1792) female / det. R. Ehrmann, III. 1999” // “2 / EMAU” // “*Zoolea lobipes* / (Olivier, 1792) female / Syn.: *Zoolea gigas* Giglio-Tos, 1914 / det. Roger Roy – Paris 10. IX. 2006”; ZIMG.

*Zoolea orba* (Burmeister, 1838)

*Vates orbus* Burmeister, 1838: 544.

**Material examined** (2 males, 4 females)

BRAZIL • 1 ♀; green label “macropterus / Stoll / Charp. fig., 25, 26. / lobipes / Ol. Serv. / orbus Burm. / Theresopol. Fruhst.” // three white labels “*Zoolea lobipes* (Olivier, 1792) female / det. R. Ehrmann, III. 1999” // “1 / EMAU” // “*Zoolea orba* (Burmeister, 1838) female / Syn.: *Zoolea guerinii* Giglio-Tos, 1914, Syn.: *Zoolea minor* Giglio-Tos, 1914 / det. Roger Roy – Paris 10. IX. 2006”; ZIMG • 2 ♂♂; each with one white label “6 / EMAU” or “7 / EMAU”; two white labels “*Zoolea lobipes* / (Olivier, 1792) male / det. R. Ehrmann, III. 1999” // “*Zoolea orba* (Burmeister, 1838) male / Syn.: *Zoolea guerinii* Giglio-Tos, 1914, Syn.: *Zoolea minor* Giglio-Tos, 1914 / det. Roger Roy – Paris 10. IX. 2006”; ZIMG • 3 ♀♀; each with one white label “3 / EMAU”, “4 / EMAU” or “5 / EMAU”; two white labels “*Zoolea minor* (Burmeister, 1838) female / det. R. Ehrmann, III. 1999” // “*Zoolea orba* (Burmeister, 1838) female / Syn.: *Zoolea guerinii* Giglio-Tos, 1914, Syn.: *Zoolea minor* Giglio-Tos, 1914 / det. Roger Roy – Paris 10. IX. 2006”; ZIMG.

**Discussion**

The ZIMG Mantodea collection, though modest in size, holds substantial scientific and historical importance. Its strength lies in the extensive material from the Gerstäcker collection, which reflects the prominent role of the institution in 19<sup>th</sup> century entomological research and the early development of

mantid taxonomy. The presence of 30 verified type specimens representing 20 valid species underscores the taxonomic and curatorial value of this collection.

The accessibility of museum specimens and their associated data from historical collections like the Gerstäcker collection at the ZIMG, through catalogues like the present one, and also through ongoing digitization efforts, provides a critical foundation for insect taxonomy. Making numerous obscure type specimens available for modern taxonomic verification, and enabling digital access to detailed morphological information via high-resolution image, can significantly enhance taxonomic research. Moreover, because historical collections preserve early records of species distributions, often from habitats that have been altered or lost, improved accessibility might play an important role in global biodiversity documentation and research. Such resources not only facilitate the study of distributional patterns and their changes over time, but also support contemporary approaches to species identification, including DNA barcode-based methods.

The verification and correction of specimen identities and type statuses through meticulous re-examination and rigorous cross-referencing, restores the scientific accuracy of the ZIMG collection, preserving both its scientific reliability and historical integrity.

The case of the missing holotype of *Acanthops contorta* Gerstaecker, 1889 emphasizes the importance of robust loan tracking and collection management protocols. As type material constitutes irreplaceable reference points in zoological nomenclature, the loss or misplacement of such specimens can have long-term taxonomic consequences (ICZN 1999). This case highlights the need for improved international collaboration and digitization initiatives to safeguard irreplaceable scientific assets.

## Acknowledgements

We are thankful to Birgit Jaenicke (MfN, Museum für Naturkunde, Berlin, Germany) for providing valuable information regarding the type specimens of *Idolomorpha lateralis* Burmeister, 1838, housed in the Berlin Museum. We also extend our sincere thanks to Christian Schwarz (Bochum, Germany) for his numerous helpful suggestions, his assistance with literature research, and for facilitating important contacts during the course of this work. We are deeply thankful to Ivan Löbl (Geneva, Switzerland) for nomenclatural advice. We sincerely thank two anonymous reviewers for their thorough review and insightful comments, which have greatly improved this manuscript.

## References

- Anderson K. 2023. The Mantodea of Carl von Linné. *Soothsayer, Journal of Mantodea Research* 4 (1): 9–26. <https://doi.org/10.5281/zenodo.7627280>
- Audinet-Serville J.-G. 1831. Revue méthodique des Insectes de l'ordre des Orthoptères. *Annales des Sciences Naturelles* 22: 1–101.
- Audinet-Serville J.-G. 1839. *Histoire naturelle des Insectes. Orthoptères*. Librairie encyclopédique de Roret, Paris. <https://doi.org/10.5962/bhl.title.16081>
- Bazyluk W. 1960. Die geographische verbreitung und Variabilität von *Mantis religiosa* (L.) (Mantodea, Mantidae) sowie Beschreibungen neuer Unterarten. *Annales Zoologici* 16 (15): 231–272.
- Beier M. 1952. Mantidea aus Ostindonesien. Wissenschaftliche Ergebnisse der Sumba-Expedition des Museums für Völkerkunde und des Naturhistorischen Museums in Basel 1949. *Verhandlungen der Naturforschenden Gesellschaft in Basel* 63 (2): 296–306.
- Beier M. 1954. *Exploration du Parc National de l'Upemba. Mission G.F. de Witte. Fascicule 20: Mantidea und Pseudophyllinae*. Institut des Parcs Nationaux du Congo Belge, Brussels.

- Beier M. 1957. Zur Kenntnis der Gattungen *Tarachodes* und *Galepsus* (Mantodea). *Revue de Zoologie et de Botanique Africaines* 56 (1–2): 111–146.
- Blanchard M.E. 1836. Mante. *Mantis chlorophaea*. *Magasin de Zoologie, Insectes* 5: 1–2, pl. 135. Lequien, Paris.
- Bolívar I. 1873. Orthopteros de España. Mantodea. *Anales de la Sociedad Española de Historia Natural* 2: 213–219.
- Bolívar I. 1889. Orthopteros de Africa del Museo de Lisboa. Mantodea. *Jornal De Sciencias Mathematicas, Physicas E Naturaes* 1 (2): 73–90.
- Bolívar I. 1908. Mantidos de la Guinea Española. *Memorias de la Real Sociedad Española de Historia Natural* 1 (26): 457–473.
- Borer M. & Ehrmann R. 2022. Contribution to the knowledge of the genus *Parasphendale* Schulthess-Schindler, 1898 (Mantodea: Miomantidae) with description of a new species from East Africa. *Faunitaxys* 10 (34): 1–29. [https://doi.org/10.57800/faunitaxys-10\(34\)](https://doi.org/10.57800/faunitaxys-10(34))
- Brancsik C. 1893. Orthoptera nova africana. *Jahrbuch des Naturwissenschaftlichen Vereins des Trencsiner Commitates* 15–16: 175–220.
- Brancsik C. 1897. Series Orthopterorum novorum. *Jahreshefte des Naturwissenschaftlichen Vereines des Trencsiner Commitates, Trencsén* 19/20: 52–85.
- Bruner L. 1906. Report on the Orthoptera of Trinidad, West-Indies. *Journal of the New York Entomological Society* 14: 143–144.
- Burmeister H. 1838. *Handbuch der Entomologie. Zweiter Band. Besondere Entomologie. Zweite Abtheilung. Kaukerfe, Gymnognatha (Erste Hälfte; vulgo Orthoptera)*. Enslin, Berlin.
- Caudell A.N. 1904. On a collection of non-saltatorial Orthoptera from Paraguay. *Journal of the New York Entomological Society* 12 (3): 179–188.
- Charpentier T. von 1825. *Horae entomologicae, adjectis tabulis novem coloratis*. Apud A. Gosohorsky Bibliopolam, Wratislaviae. <https://doi.org/10.5962/bhl.title.5530>
- Charpentier T. von 1843. *Orthoptera Descripta Et Depicta*. Voss, Lipsiae.
- Chopard L. 1916. Étude des Mantides Américains. Collection I. Bolivar. *Annales de la Société entomologique de France* 85: 161–187. <https://doi.org/10.1080/21686351.1916.12280137>
- Deckert J. 1999. Zur Geschichte der Heteroptera-Sammlung im Berliner Museum für Naturkunde. *Heteropteron - Mitteilungsblatt der Arbeitsgruppe Mitteleuropäischer Heteropterologen* 6: 15–18.
- De Geer C. 1773. *Mémoires pour servir à l'histoire des insectes. Vol. 3*. Pierre Hesselberg, Stockholm.
- De Haan W. 1842. Bijdragen tot de kennis der Orthoptera. *Verhandelingen over de natuurlijke geschiedenis der Nederlandsche overzeesche bezittingen door de leden der natuurkundige commissie in Oost-Indië en andere schrijvers*: 45–248.
- Drury D. 1773. *Illustrations of Natural History of Exotic Insects* 2. White, London.
- Ehrmann R. 2002. *Mantodea Gottesanbeterinnen der Welt*. Natur und Tier Verlag, Münster.
- Ehrmann R. 2011. Mantodea from Turkey and Cyprus (Dictyoptera: Mantodea). *Articulata* 26 (1): 1–42.
- Eversmann E. von 1859. Orthoptera Volgo-Uralensia, oder die in den Gegenden östlich von der Wolga und dem Uralfluss, südlich bis zum Aralsee und dem Sir-Darja bis jetzt aufgefundenen Gradflügler. *Bulletin de la Société impériale des naturalists de Moscou* 32: 121–125.

- Fabricius J.C. 1775. *Systema entomologiae sistens insectorum classes, ordines, genera, species, adiectis synonymis, locis, descriptionibus, observationibus*. Officina Libraria Kortii, Flensburgi et Lipsiae. <https://doi.org/10.5962/bhl.title.36510>
- Fabricius J.C. 1798. *Supplementum Entomologiae systematicae*. Prost & Storch, Hafniae. <https://doi.org/10.5962/bhl.title.65803>
- Forskål P. 1775. *Descriptiones animalium avium Insectorum. Orthoptera – Mantodea*. Havniae, Carsten Niebuhr, Moeller, Kopenhagen.
- Gerstaecker A. 1869. Beiträge zur Insekten-Fauna Zanzibars. Nr. II. Orthoptera et Neuroptera. *Archiv für Naturgeschichte* 35 (1/I): 201–223. <https://doi.org/10.5962/bhl.part.12294>
- Gerstaecker A. 1873. *Gliederthier-Fauna des Sansibar-Gebietes. Nach dem von Dr. O. Kersten während der von der Decken'schen Ost-Afrikanischen Expedition im Jahre 1862 und von C. Cooke auf der Insel Sansibar im Jahre 1864 gesammelten Material*. Verlag C.F. Winter, Leipzig & Heidelberg. <https://doi.org/10.5962/bhl.title.10149>
- Gerstaecker A. 1883. Beiträge zur Kenntnis der Orthopteren-Fauna Guinea's. Nach den von R. Buchholz während der Jahre 1872–1875 gesammelten Arten. *Mitteilungen aus dem Naturwissenschaftlichen Verein Neu-Vorpommern und Rügen* 14: 39–102.
- Gerstaecker A. 1889. Charakteristik einer Reihe bemerkenswerter Orthopteren. *Mitteilungen aus dem Naturwissenschaftlichen Verein Neu-Vorpommern und Rügen* 20: 1–58.
- Giglio-Tos E. 1907. Ortotteri Africani. Parte II. Blattodea, Mantodea etc. *Bollettino dei Musei di Zoologia ed Anatomia comparata della Reale Università di Torino* 563: 1–26.
- Giglio-Tos E. 1911. Mantidi Esotici. II. Polyspilote. *Bullettino della Società entomologica Italiana* 42: 3–38.
- Giglio-Tos E. 1912. Mantidi Esotici. V. Mantes, Tenoderae, Hierodulae et Rhomboderae. *Bullettino della Società entomologica Italiana* 43: 3–167.
- Giglio-Tos E. 1913. Orthoptera, Fam. Mantidae, Subfam. Perlamantinae. In: Wytsman, P. (ed.) *Genera Insectorum*: Fascicule 144: 1–13. Desmet-Verteneuil, Brussels.
- Giglio-Tos E. 1915a. Mantidi Esotici. VIII. Acromantinae. *Bollettino dei Musei di Zoologia ed Anatomia comparata della Reale Università di Torino* 30 (702): 1–16.
- Giglio-Tos E. 1915b. Mantidi Esotici. Generi e Specie Nuove. *Bullettino della Società entomologica Italiana* 46: 31–108.
- Giglio-Tos E. 1915c. Mantidi Esotici. Generi e Specie Nuove. *Bullettino della Società entomologica Italiana* 46: 134–200.
- Giglio-Tos E. 1916. Mantidi Esotici. Generi e Specie Nuove. *Bullettino della Società entomologica Italiana* 47: 3–44.
- Giglio-Tos E. 1917. Mantidi Esotici. Generi e Specie Nuove. *Bullettino della Società entomologica Italiana* 48: 43–108.
- Goeze J.A.E. 1778. *Entomologische Beiträge zu des Ritter Linné zwölften Ausgabe des Natursystems. Vol. 2*. Weidmanns Erben und Reich, Leipzig. <https://doi.org/10.5962/bhl.title.45974>
- Guérin-Méneville F.E. 1838. Voyage autour du monde sur la corvette La Favorite pendant les années 1830, 1831 et 1832 – Insectes. *Magazin de Zoologie* 8: 81–160.
- Guérin-Méneville F.E. 1843. Animaux articulés. In: Delassert M.A. (ed.) *Souvenirs d'un voyage dans l'Inde exécuté de 1834 à 1839. Seconde partie. Histoire Naturelle*: 33–98. Fortin, Masson & Co., Langlois & Leclercq, Paris.

- Hebard M. 1922. Studies in the Mantidae and Phasmidae of Panama (Orthoptera). *Transactions of the American Society of Philadelphia* 48: 327–362.
- ICZN 1999. *International Code of Zoological Nomenclature, Fourth Edition*. International Trust for Zoological Nomenclature, Natural History Museum, London.
- Illiger J.K.W. 1798. *Verzeichnis der Käfer Preussens und dem angehängten Versuch einer natürlichen Ordnung und Gattungsfolge der Insecten*. Gebauer, Halle.
- Kirby W.F. 1899. On a collection of Mantidae from the Transvaal & c. formed by Mr. W. Distant. Orthoptera. Mantidae. *Annals and Magazine of Natural History*, 4 (23): 344–353.  
<https://doi.org/10.1080/00222939908678211>
- Kirby W.F. 1904. Notes on Mantidae in the collection of the British Museum (Natural History), South Kensington, with descriptions of new species. *Annals and Magazine of Natural History*, 13 (74): 81–88.  
<https://doi.org/10.1080/00222930408562442>
- La Greca M. 1967. Le *Sphodromantis* propriamente dette dell’Africa Occidentale e Centrale (Insecta, Mantodea). *Annuario dell’Istituto e Museo di Zoologia dell’Università di Napoli* 18 (1): 1–38.
- Latreille P.A. 1833. Insectes de l’Amérique équinoxiale, recueillis pendant le voyage de M.M. de Humboldt et Bonpland et décrits par M. Latreille. Seconde Partie. In: Humboldt A. von & Bonpland A. (eds) *Recueil d’observations de zoologie et d’anatomie comparée* 2: 9–138.
- Lefebvre A. 1835. Nouveau groupe d’Orthoptères de la famille des Mantides. *Annales de la Société entomologique de France* 4: 449–508.
- Linnaeus C. 1758. *Systema naturae per regna tria naturae, secundum classes, ordines, genera, species, cum characteribus, differentiis, synonymis, locis. Tomus 1, editio decima, reformata*. Laurentii Salvii, Holmiae, Stockholm. <https://doi.org/10.5962/bhl.title.542>
- Linnaeus C. 1763. *Amoenitates Academicae; Physicae, Medicae, Botanicae*. Kiesewetter et Salvius, Holmiae, Stockholm.
- Lombardo F. & Ippolito S. 2004. Revision of the species of *Acanthops* Serville 1831 (Mantodea, Mantidae, Acanthopinae) with comments on their phylogeny. *Annals of the Entomological Society of America* 97 (6): 1076–1102. [https://doi.org/10.1603/0013-8746\(2004\)097\[1076:ROTSOA\]2.0.CO;2](https://doi.org/10.1603/0013-8746(2004)097[1076:ROTSOA]2.0.CO;2)
- Lombardo F., Umbriaco R. & Ippolito S. 2015. Taxonomic revision of the Neotropical genus *Parastagmatoptera* Saussure, 1871 (Dictyoptera, Mantidae, Stagmatopterinae) with a biogeographic comment. *Insect Systematics & Evolution* 46 (3): 221–267. <https://doi.org/10.1163/1876312X-45032117>
- Michalik P., Fusser M., Sonnenberg D. & Schmidt J. 2010. Catalogue of the types of Gerd Müller-Motzfeld’s Carabidae collection, and notes on the insect collections at the Zoological Institute and Museum (ZIMG) of the University of Greifswald (Germany). *Entomologische Blätter* 106: 203–232.
- Newman E. 1838. Natural order (nov. gen. *Mantoida*). *Entomological Magazine* 5: 178–179.
- Olivier A.G. 1792. Mante. In: *Encyclopédie méthodique. Histoire naturelle. Insectes. Tome septième*: 616–642. Panckoucke, Paris.
- Otte D., Spearman L. & Stiewe M.B.D. 2025. Mantodea Species File Online. Version 5.0/5.0. Available from: <http://Mantodea.SpeciesFile.org> [accessed 16 Aug. 2025].
- Palisot De Beauvois A.M.F.J. 1805. *Insectes recueillis en Afrique et en Amérique, dans les royaumes d’Oware et de Benin, à Saint-Dominique et dans les États-Unis, pendant les années 1786–1797*. Paris.
- Pallas P.S. 1773. *Reise durch verschiedene Provinzen des Russischen Reiches in den Jahren 1768–1774. 2<sup>nd</sup> edition, Vol. 1*. Akademie Buchhandlung, St. Petersburg.

- Pantel J. 1896. Notes Orthoptérologiques. *Anales de la Sociedad Española de Historia Natural* 5 (25): 47–118.
- Perty J.A.M. 1832. *Delectus Animalium Articulatorum, quae in itinere per Brasiliam annis MDCCCXVII – MDCCCXX jussu et auspiciis Maximiliani Josephi I. Bavariae Regis Augustissimi Percato Collegerunt Dr. J. B. de Spix et Dr. C. F. Ph. de Martius. Vol. 2.* Impensis Editoris, Monachii.
- Perty J.A.M. 1833. *Delectus Animalium Articulatorum, quae in itinere per Brasiliam annis MDCCCXVII – MDCCCXX jussu et auspiciis Maximiliani Josephi I. Bavariae Regis Augustissimi Percato Collegerunt Dr. J. B. de Spix et Dr. C. F. Ph. de Martius. Vol. 3.* München. <https://doi.org/10.5962/bhl.title.102991>
- Rehn J.A.G. 1902. Notes on some generic names employed by Serville, in the *Revue methodique*, and Fieber, in the *Synopsis du europaischen Orthopteran*. *The Canadian Entomologist* 34 (12): 316–317. <https://doi.org/10.4039/Ent34316-12>
- Rehn J.A.G. 1916. The Stanford Expedition to Brazil, 1911. Dermaptera and Orthoptera I. *Transactions of the American Entomological Society* 42 (3): 215–308.
- Rehn J.A.G. 1935. The Orthoptera of Costa Rica, Part I. Mantidae. *Proceedings of the Academy of Natural Sciences of Philadelphia* 87: 167–272.
- Rehn J.A.G. 1954. On some Gerstaecker types of Neotropical Orthoptera. I. Manteidae. *Transactions of the American Entomological Society* 80 (3/4): 175–184.
- Rodrigues H.M. & Cancellato E.M. 2016. Taxonomic revision of *Stagmatoptera* Burmeister, 1838 (Mantodea: Mantidae, Stagmatopterinae). *Zootaxa* 4183 (1): 1–78. <https://doi.org/10.11646/zootaxa.4183.1.1>
- Roy R. 2004a. *Acontista* Saussure & Zehntner, 1894, genre valide (Dict. Mantodea). *Bulletin de la Société entomologique de France* 109 (3): 235–236. <https://doi.org/10.3406/bsef.2004.16119>
- Roy R. 2004b. Révision et phylogénie des Choeradodini Kirby, 1904 (Dictyoptera, Mantidae). *Bulletin de la Société entomologique de France* 109 (2): 113–128. <https://doi.org/10.3406/bsef.2004.16095>
- Roy R. & Stiewe M.B.D. 2013. Bilan des connaissances relatives au genre *Oxypilus* Audinet Serville (Mantodea, Hymenopodidae). *Revue française d'entomologie* (N.S.) 33 (1–4): 27–54.
- Saussure H. de 1869. Essai d'un système des Mantides. *Mittheilungen der Schweizerischen entomologischen Gesellschaft* 3 (2): 49–73.
- Saussure H. de 1870. Additions au système des mantides. *Mittheilungen der Schweizerischen entomologischen Gesellschaft* 3 (5): 221–244.
- Saussure H. de 1871a. Mélanges orthoptérologiques. III<sup>me</sup> Fascicule. Mantides. *Mémoires de la Société de Physique et d'Histoire naturelle de Genève* 21 (1): 1–214. <https://doi.org/10.5962/bhl.title.59878>
- Saussure H. de 1871b. Mélanges orthoptérologiques. Supplément au III<sup>me</sup> fascicule. Mantides. *Mémoires de la Société de Physique et d'Histoire naturelle de Genève* 21 (1): 239–337. <https://doi.org/10.5962/bhl.title.59878>
- Saussure H. de 1871c. *Mélanges orthoptérologiques. III<sup>me</sup> fascicule*: 149–362. *Mantides*. H. Georg, Genève & Bâle.
- Saussure H. de 1871d. *Mélanges orthoptérologiques. Supplément au III<sup>me</sup> fascicule*: 363–460. *Mantides*. H. Georg, Genève & Bâle.
- Saussure H. de 1871e. *Mémoires pour servir à l'histoire naturelle du Mexique, des Antilles et des États-Unis, quatrième mémoire. IV. Synopsis des Mantides américains*. 1 (4): 1–186 H. Georg, Genève & Bâle.
- Saussure H. de 1872. Mélanges orthoptérologiques. IV<sup>me</sup> fascicule. Mantides et Blattides. *Mémoires de la Société de Physique et d'Histoire naturelle de Genève* 23 (2): 1–164.

- Saussure H. de 1898. *Analecta entomologica*. I. Orthopterologica. Famille des Mantides. *Revue Suisse de Zoologie* 5: 183–248, 787–809. <https://doi.org/10.5962/p.318250>
- Saussure H. de 1899. Orthoptera. In: Voeltzkow A. (ed.) *Wissenschaftliche Ergebnisse der Reisen in Madagaskar und Ostafrika in den Jahren 1889–1895. Abhandlungen der Senckenbergischen Naturforschenden Gesellschaft* 21 (4): 569–664.
- Saussure H. de & Zehntner L. 1894. *Biologia Centrali-Americana*. Insecta. Orthoptera. Fam. Mantidae. *Société entomologique Zurich* 1: 123–197. <https://doi.org/10.5962/bhl.title.730>
- Schulthess-Schindler A. von 1898. Orthoptères du Pays des Somalis, recueillis par L. Robecchi-Brichetti en 1891 et par le Prince E. Ruspoli en 1892–93, déterminés et décrits. *Annali del Museo Civico di Storia Naturale di Genova* 39: 161–216.
- Schwarz C.J. & Roy R. 2019. The systematics of Mantodea revisited: an updated classification incorporating multiple data sources (Insecta Dictyoptera). *Annales de la Société entomologique de France* (N.S.) 55 (2): 101–196. <https://doi.org/10.1080/00379271.2018.1556567>
- Schwarz C.J., Ehrmann R., Stiewe M.B.D., Mörtter R. & Falkenberg M. 2020. Mantodea of Panguana (Insecta: Dictyoptera). *Zootaxa* 4824 (1): 1–66. <https://doi.org/10.11646/zootaxa.4824.1.1>
- Scudder S.H. 1869. Notes on Orthoptera collected by Professor James Orton on either side of the Andes of Equatorial South America. *Proceedings of the Boston Society of Natural History* 12: 330–356.
- Scudder S.H. 1896. Index to the Mantidae of North America, north of Mexico. *The Canadian Entomologist* 28 (8): 207–218. <https://doi.org/10.4039/Ent28207-8>
- Stål C. 1856. Orthoptera cursoria och Locustina från Cafferlaudet. *Öfversigt af Kongliga Vetenskaps Akademiens Förhandlingar* 13: 165–170.
- Stål C. 1860. Orthoptera species novas descripsit. In: Oscar K. (ed.) *Kongliga Svenska Fregatten Eugenie Resa Omkring Jorden under Befäl af C. A. Virgin, Åren 1851 – 1853. Zoologici. I. Insecta*: 299–350. Norstedt & Söner, Stockholm.
- Stål C. 1871. Orthoptera quaedam africana descripsit C. Stål. *Öfversigt af Kongliga Vetenskaps Akademien Förhandlingar*, Stockholm 28 (3): 375–401.
- Stål C. 1877. Systema Mantodeorum. Essai d'une systématisation nouvelle des Mantodées. *Bihang till Kongliga Svenska Vetenskaps-Akademiens Handlingar* 4 (10): 1–91.
- Staudinger O. 1890. Lebensskizze des Dr. Paul Hahnel. *Deutsche Entomologische Zeitschrift "Iris"* 3: 128–132.
- Stoll C. 1813. *Naturlijke en naar leven nauwkeurige gekleurde afbeeldingen en beschrijvingen der spoken, wandelende bladen, zabelspringhanen, krekels, trekspringhanen en kakkerlakken, in alle vier deelen der wereld Europa, Asia, Afrika en Amerika. Représentation exactement colorée d'après nature des spectres ou phasmes, des mantes, des sauterelles, des grillons, des criquets et des blattes qui se trouvent dans les quatre parties du monde, l'Europe, l'Asie, l'Afrique et l'Amérique. Afbeeldingen en beschrijvingen der spoken en wandelende bladen. Représentation des spectres ou phasmes et des mantes ou des feuilles ambulantes*. J.C. Sepp et fils, Amsterdam. <https://doi.org/10.5962/bhl.title.169412>
- Svenson G.J. 2014. Revision of the Neotropical bark mantis genus *Liturgusa* Saussure, 1869 (Insecta, Mantodea, Liturgusini). *Zookeys* 390: 1–214. <https://doi.org/10.3897/zookeys.390.6661>
- Thunberg C.P. 1784. *Novae Insectorum species descriptae. Nova Acta Upsaliae* 4: 1–28.
- Thunberg C.P. 1815. Hemipterorum maxillosorum genera illustrata plurimisque novis speciebus ditata ac descripta. *Mémoires de l'Académie de Saint-Petersbourg* 5: 211–301.

- Tindale N.B. 1923. Review of Australian Mantidae. *Records of the South Australian Museum* 2 (3): 425–457.
- Uvarov B.P. 1940. Twenty-eight new generic names in Orthoptera. *Annals and Magazine of Natural History* 11 (5): 173–176. <https://doi.org/10.1080/00222934008527035>
- Werner F. 1908. Zur Kenntnis afrikanischer Mantodeen II. *Berichte der Senckenbergischen Naturforschenden Gesellschaft zu Frankfurt am Main* 1908: 31–56.
- Werner F. 1923. Zweiter Beitrag zur Kenntnis der Mantodeen von Niederländisch-Indien. *Treubia* 3 (3–4): 387–404. <https://doi.org/10.14203/treubia.v3i0.1638>
- Werner F. 1930. Über asiatische Mantideen aus dem naturhistorischen Reichsmuseum in Stockholm. *Arkiv för Zoologi* 21A (34): 1–10. <https://doi.org/10.5962/bhl.part.1498>
- Westwood J.O. 1835. Insectorum arachnoidumque novorum decades duo. *Zoological Journal* 5: 440–453.
- Westwood J.O. 1839. *An Introduction to the Modern Classification of Insects. Vol. I.* Longman, Orme, Brown, Green & Longmans, London.
- Westwood J.O. 1841. Description of a new genus of mantideous Orthoptera. In: *Arcana Entomologica, or Illustrations of New, Rare, and Interesting Exotic Insects I*: 33–34. W. Smith, London. <https://doi.org/10.5962/bhl.title.158335>
- Westwood J.O. 1843. *Arcana Entomologica, or Illustrations of New, Rare and Interesting Insects. Vol. I*, W. Smith, London. <https://doi.org/10.5962/bhl.title.34467>
- Westwood J.O. 1889. *Revisio insectorum familiae mantidarum, speciebus novis aut minus cognitis descriptis et delineatis.* Gurney & Jackson, London.
- Wood-Mason J. 1877. XVII. Descriptions of two new genera and species of Indian Mantidae. *The Annals and Magazine of Natural History* 19 (4): 219–222. <https://doi.org/10.1080/00222937708682125>
- Wood-Mason J. 1878. 3. On new and little-known Mantidae. *Proceedings of the Zoological Society of London* 1878 (3): 580–587. <https://doi.org/10.1111/j.1469-7998.1878.tb07990.x>
- Wood-Mason J. 1882. V. On new and little-known Mantodea. *The Journal of the Asiatic Society of Bengal* 51 (2): 21–36.

Printed versions of all papers are deposited in the libraries of two of the institutes that are members of the *EJT* consortium: Muséum national d'Histoire naturelle, Paris, France and Royal Museum for Central Africa, Tervuren, Belgium. The other members of the consortium are: Royal Belgian Institute of Natural Sciences, Brussels, Belgium; Meise Botanic Garden, Meise, Belgium; Natural History Museum of Denmark, Copenhagen, Denmark; Naturalis Biodiversity Center, Leiden, the Netherlands; Museo Nacional de Ciencias Naturales-CSIC, Madrid, Spain; Leibniz Institute for the Analysis of Biodiversity Change, Bonn – Hamburg, Germany; National Museum of the Czech Republic, Prague, Czech Republic; The Steinhardt Museum of Natural History, Tel Aviv, Israël.