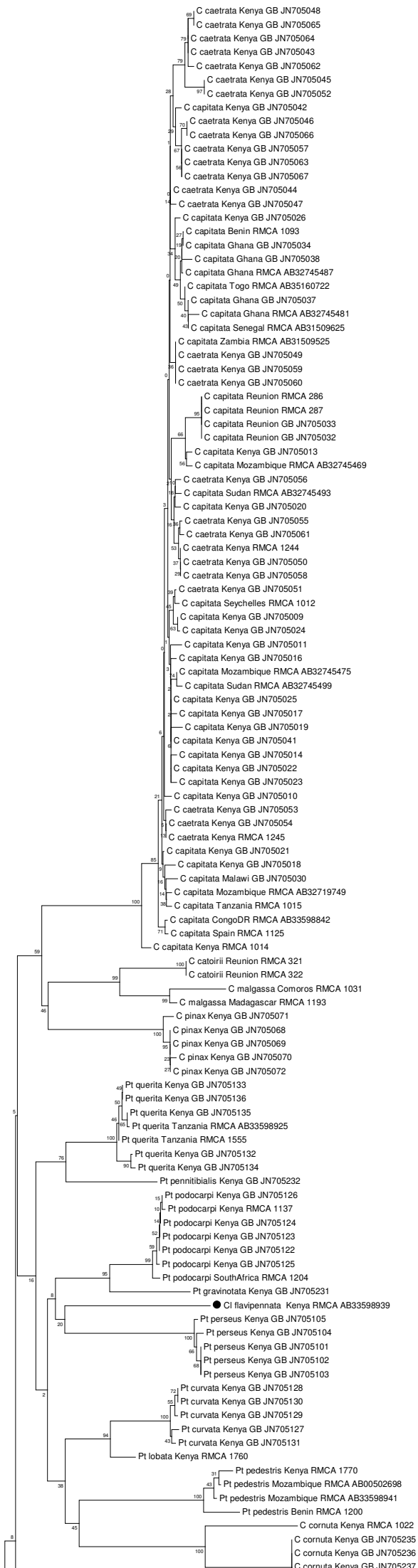
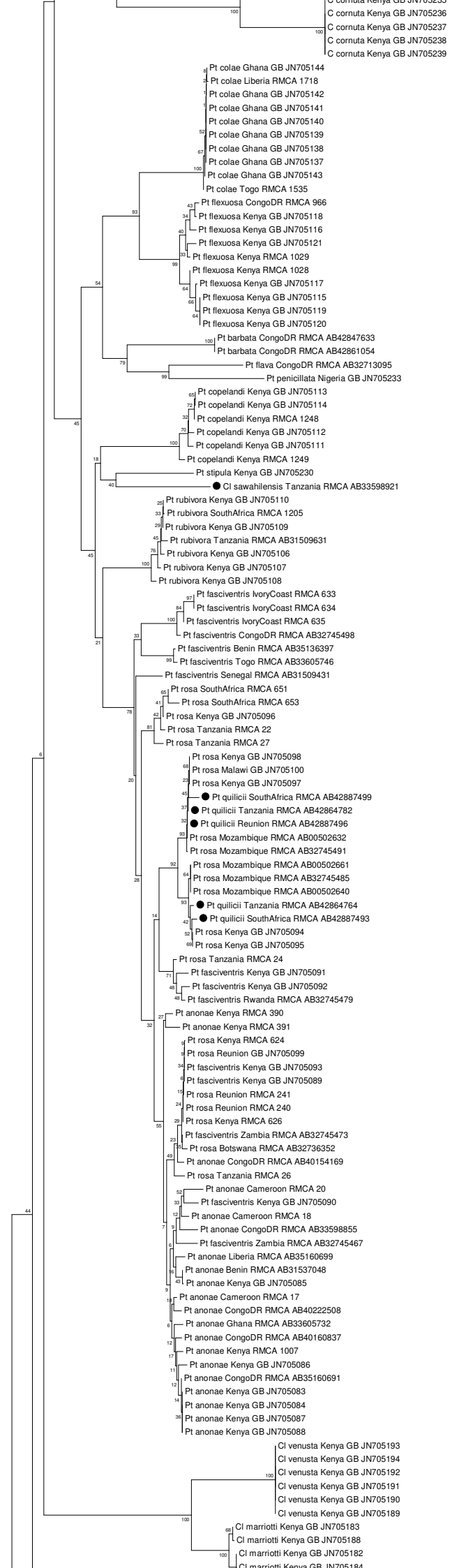


## Supplementary file

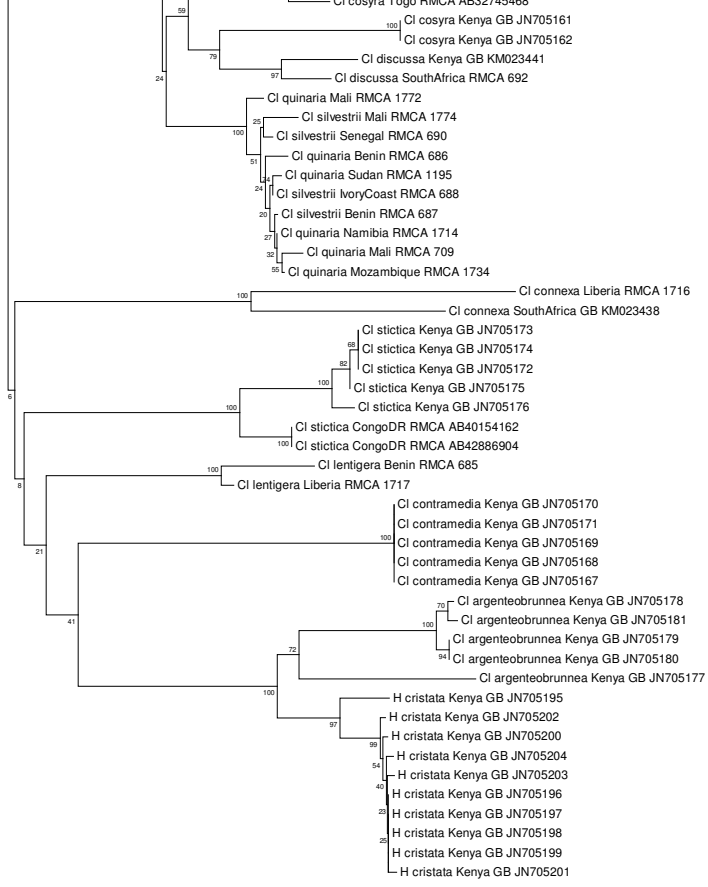
Neighbor joining tree describing distance relationships (Kimura's two parameter genetic distances; Kimura 1980) between the newly generated *Ceratitis* DNA barcodes (black circles) and a selection of 367 reference DNA barcodes deposited in BOLD (and corresponding to 51 species from all six *Ceratitis* subgenera). Node support (as resulting from 500 bootstrap replicates) is indicated.





Phylogenetic tree showing relationships between various species, including *Ci marriotti*, *Ap munroanum*, *Ci divaricata*, *Pd millicentae*, *Pd edwardsi*, *Pd punctata*, *Pd cuthbertsoni*, *Pd punctata*, *Pd hamata*, *Pd serrata*, *Pd ditissima*, *Pd breinii*, *Ci simi*, *Ci taitaensis*, *Ci whartoni*, *Ci oraria*, *Ci cosyra*, *Ci striatella*, *Ci pallidula*, and *Ci cosyra*. The tree includes bootstrap values and accession numbers (RMCA, GB, GQ).

- Ci marriotti* Kenya GB JN705180
- Ci marriotti* Kenya GB JN705184
- Ci marriotti* Kenya GB JN705185
- Ci marriotti* Kenya GB JN705186
- Ci marriotti* Kenya GB JN705187
- Ci marriotti* Kenya RMCA 1257
- Ap munroanum* SouthAfrica RMCA AB31509578
- Ap munroanum* SouthAfrica RMCA AB31525630
- Ap munroanum* SouthAfrica RMCA AB31515935
- Ci divaricata* Kenya GB JN705155
- Ci divaricata* Kenya GB AY788425
- Ci divaricata* Kenya GB JN705153
- Ci divaricata* Kenya GB JN705151
- Ci divaricata* Kenya GB JN705152
- Ci divaricata* Kenya GB JN705154
- Ci divaricata* Kenya GB JN705156
- Pd millicentae* Mozambique RMCA 1737
- Pd millicentae* Mozambique RMCA 1738
- Pd millicentae* Kenya GB JN705082
- Pd millicentae* Kenya GB JN705081
- Pd millicentae* Kenya GB JN705078
- Pd millicentae* Kenya GB JN705079
- Pd millicentae* Mozambique RMCA 1538
- Pd millicentae* Kenya RMCA 1134
- Pd millicentae* Kenya GB JN705080
- Pd millicentae* Mozambique RMCA AB00502749
- Pd millicentae* Mozambique RMCA AB32719706
- Pd millicentae* Mozambique RMCA 1739
- Pd edwardsi* IvoryCoast RMCA AB32745486
- Pd edwardsi* Kenya GB GQ504993
- Pd punctata* CongoDR RMCA AB32745480
- Pd cuthbertsoni* Kenya GB GQ154216
- Pd cuthbertsoni* Kenya RMCA 1765
- Pd punctata* Ghana RMCA 1199
- Pd punctata* Liberia RMCA AB35160693
- Pd punctata* CongoDR RMCA AB40159463
- Pd punctata* CongoDR RMCA AB40222501
- Pd hamata* Kenya GB GQ504994
- Pd hamata* Kenya GB GQ505002
- Pd serrata* CongoDR RMCA AB40159308
- Pd serrata* CongoDR RMCA AB33598909
- Pd ditissima* Ghana GB JN705075
- Pd ditissima* Nigeria GB JN705076
- Pd edwardsi* CongoDR RMCA AB35160689
- Pd ditissima* Kenya GB JN705074
- Pd ditissima* Kenya GB JN705073
- Pd ditissima* Kenya GB JN705077
- Pd breinii* Tanzania RMCA AB32745503
- Pd breinii* Tanzania RMCA AB32745509
- Pd breinii* Kenya GB JN705240
- Pd breinii* Kenya RMCA 1010
- Pd breinii* Cameroon RMCA 1185
- Pd breinii* Guinea RMCA 1735
- Pd breinii* Benin RMCA 1124
- Pd breinii* Senegal RMCA AB32745497
- Pd breinii* Togo RMCA AB35160704
- Pd breinii* Togo RMCA AB00502616
- Pd breinii* IvoryCoast RMCA 82
- Pd breinii* IvoryCoast RMCA 83
- Ci simi* Kenya GB JN705234
- Ci taitaensis* Kenya RMCA AB49137976
- Ci taitaensis* Kenya RMCA AB49137982
- Ci taitaensis* Kenya RMCA AB49137970
- Ci taitaensis* Kenya RMCA AB49137964
- Ci whartoni* Kenya GB JN705225
- Ci whartoni* Kenya GB JN705226
- Ci whartoni* Kenya GB JN705227
- Ci whartoni* Kenya GB JN705228
- Ci whartoni* Kenya GB JN705229
- Ci oraria* Kenya GB JN705146
- Ci oraria* Kenya RMCA 1135
- Ci oraria* Kenya GB JN705150
- Ci oraria* Kenya GB JN705149
- Ci oraria* Kenya GB JN705147
- Ci oraria* Kenya GB JN705148
- Ci oraria* Kenya GB JN705145
- Ci cosyra* Kenya GB JN715792
- Ci cosyra* Kenya GB JN715794
- Ci cosyra* Kenya GB JN715791
- Ci striatella* Benin RMCA 691
- Ci striatella* Mali GB GQ154267
- Ci cosyra* Mali GB JN705165
- Ci cosyra* SouthAfrica RMCA 694
- Ci cosyra* Kenya GB JN705157
- Ci cosyra* Senegal RMCA 681
- Ci cosyra* Mozambique RMCA 1540
- Ci cosyra* Uganda RMCA 683
- Ci cosyra* Mali GB JN705166
- Ci cosyra* Botswana RMCA AB32736355
- Ci cosyra* CongoDR RMCA AB32740689
- Ci cosyra* Mali GB JN705163
- Ci cosyra* Benin RMCA 674
- Ci cosyra* Tanzania RMCA 682
- Ci cosyra* Mozambique RMCA 1545
- Ci cosyra* Kenya RMCA 679
- Ci cosyra* Kenya GB JN705158
- Ci cosyra* Kenya GB JN705159
- Ci cosyra* Kenya GB JN705160
- Ci cosyra* Kenya RMCA 1024
- Ci cosyra* Mozambique RMCA 1546
- Ci cosyra* Madagascar RMCA 1547
- Ci cosyra* Mali GB JN705164
- Ci cosyra* Mozambique RMCA AB00502697
- Ci pallidula* Tanzania RMCA AB42887036
- Ci pallidula* Malawi RMCA AB42887037
- Ci pallidula* Tanzania RMCA AB42887028
- Ci pallidula* Tanzania RMCA AB42887023
- Ci pallidula* Tanzania RMCA AB42887024
- Ci pallidula* Ethiopia RMCA AB42887027
- Ci cosyra* Cameroon RMCA 675
- Ci cosyra* Togo RMCA AB32745474
- Ci cosyra* CongoDR RMCA AB40159345
- Ci cosyra* IvoryCoast RMCA 677
- Ci cosyra* Togo RMCA AB32745468
- Ci cosyra* Kenya GB JN705161
- Ci cosyra* Kenya GB JN705162



0.01